



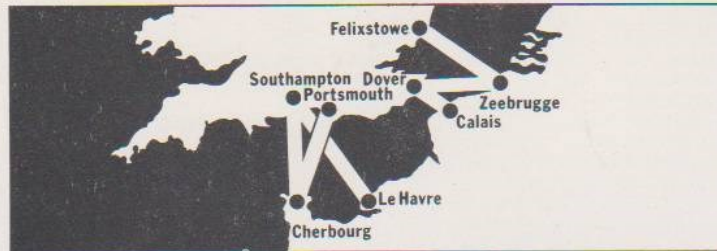
The
Rheindahlen
Bulletin

No. 79
JANUARY 1977

Travel bargains for Forces-travel Townsend Thoresen

Going home on leave? Save yourself some money, cross by Townsend Thoresen at specially reduced fares. You qualify if you are British or Commonwealth Forces personnel, or an attached civilian, stationed on mainland Europe. Your immediate family stationed with you also get the concession. During winter, your car, caravan, trailer or motorcycle goes with you at a reduced fare, too.

If you're coming straight from Germany, or Holland or Belgium, speed up the journey by making Zeebrugge your exit port. A fast run along the E3 or E5 motorway and you are ready to cross to Dover - or to Felixstowe, handy for North London, the Midlands and the North. Or there's Calais-Dover, another of our routes. If you're visiting France on the way, or live in south-west England, there are also the Le Havre - Southampton and Cherbourg - Southampton routes, and our new one, Cherbourg - Portsmouth. Townsend Thoresen have frequent sailings, day and night, so choose the



crossing that makes the most of your leave. And make the most of the crossing by sailing

Townsend Thoresen! The ships are modern, big, comfortable. The staff look after you well - and the whole atmosphere on board is warm and friendly. You can have a good meal in the restaurant or buffet, enjoy a drink in the bar or just sit back and relax in a comfortable roomy lounge. Attractive cabins are available too, and a well stocked duty-free shop for last minute presents.



If you've only a short leave it's still worth going home! Townsend Thoresen have a half-price return scheme that gives you 48 hours in the UK, or a 5-day visit at an inclusive fare for four adults - the car goes free. (Fares for these trips are already specially

reduced, so no extra Forces concession is available.)

Find out all the details - routes, sailing times,

prices - from our leaflet 'Travel Bargains for Forces'. Send in the coupon for your copy or ask your local travel agency.

To: Townsend Thoresen Car Ferries,
4000 Dusseldorf 1, Oststrasse 80.
Please send me your 'Travel Bargains for Forces' leaflet.

RB 1/77

NAME _____

ADDRESS _____

TOWNSEND THORESEN
The European Ferries



A NEW YEAR MESSAGE FROM THE COMMANDERS-IN-CHIEF – 1977

We are both happy, at the end of our first year in Rheindahlen, to take this opportunity to express our thanks and appreciation for the hard work, dedication and support of everyone in Rheindahlen during 1976.

We have been impressed by the spirit of cooperation that exists between the various nationalities and between the military and civilian population. It is because of all your efforts that the four major Headquarters function so smoothly.

We are particularly grateful to those who give so much of their spare time to provide such a high standard of entertainment and enjoyment and to those who take a hand in voluntary work of all kinds in our community.

We send good wishes to all ranks and their families of every nation represented here for a successful and peaceful year ahead.



RAF Pru

It is with regret we say farewell to our respective Service Advisers, Major R. Jackson, and Sqn. Ldr. M. Markey who are departing on promotion. We wish them well and welcome their replacements, Major W. A. Coupar and Sqn Ldr R. W. Bullock.



Calling all Wives of RAF and Civilian Personnel. Have you time on your hands? Is your judgment mature? Do you possess a typewriter or are willing to purchase one? Do you live on Camp? Would you like to be a Co-Editor on the Rheindahlen Bulletin? If so please see Stop Press.

The Rheindahlen Bulletin, a monthly publication, is published jointly by the Commander Rheindahlen Garrison and the Station Commander R.A.F. Rheindahlen.

CO-EDITORS: Mrs. V. Sims (RA 2195), Mrs. L. Fall

BUSINESS MANAGER: Flt. Lt. J. A. Bennett
(Ext. 4537)

ALL CONTRIBUTIONS TO THE MAGAZINE MUST BE RECEIVED BY THE 10th JANUARY FOR THE FEBRUARY EDITION.
ADDRESS: Co-Editors, Rheindahlen Bulletin, H.Q. Rheindahlen Garrison, BFPO 40 and S.H.Q. RAF Rheindahlen, BFPO 40

The material in this magazine is copyright reserved and should not be reproduced without permission.
Front cover: FROZEN FALLS by Bob Clarke

COOK - A - CURRY

Whether you are trying to eke out the family budget or entertain fairly cheaply, curries are always a good bet. One of our readers has sent us her favourite recipe for a meat curry which we hope you will enjoy.



INGREDIENTS

| | |
|---|--------------------------|
| 2-3 lbs lean meat cut into 1 1/2-2" cubes | 1 tablespoon curry paste |
| 4 oz coconut | 1 teaspoon chilli powder |
| 1/2 pint water | 1 teaspoon curry powder |
| 6 onions | 1/2 teaspoon ginger |
| 3-4 cloves garlic | 1 teaspoon salt |
| 4 oz butter | 2 Bay leaves |
| 1/2 Tablespoon cumin powder | 4 tomatoes (skinned) |
| 1 Tablespoon turmeric ground | 3 cloves |
| 1 Tablespoon coriander ground | 1 pint stock |

METHOD

- 1) Pour 1/2 pint boiling water over 4 oz coconut and leave to stand for 2 hrs. Strain, keeping the milk in one bowl, the coconut in another.
- 2) Slice and chop onions finely. Crush garlic with a little salt.
- 3) Melt butter in a thick-bottomed pan; gently fry onions and garlic until transparent but not brown.
- 4) Take pan off heat and add all the spices, stir well into onion and replace over heat and cook for about 10 mins, stirring all the time to prevent sticking. A little stock may be added if it becomes too dry. The spices should rise through the fat when cooked.
- 5) Add the skinned and chopped tomatoes and cook for another 5 mins.
- 6) Remove from heat and add meat. Stir well to coat meat pieces. Replace over heat and cook until meat is browned, then add stock and coconut milk; bring to the boil slowly. Place in an ovenproof casserole and cook in a slow oven for 3 hours or until meat is tender. The long slow cooking produces a much better taste. If the sauce is too thin, add a little of the strained coconut and cook a further 10 mins. Just before serving, stir in a little lemon or lime juice. Serve with boiled rice and sambols, dahl and vegetable curry.

SAMBOLS OR SIDE DISHES SUGGESTIONS

Plain Yoghurt - if the curry is too hot for your taste, this will cool it down.

Chilli Sauce - if the curry is not hot enough a LITTLE of this should do the trick.

Onion & Tomato - Slice onion finely, cut tomatoes in half - take out pulp (this can be added to Dahl recipe), slice finely and add to onion.

Cucumber Cooler - 1/4 cucumber diced and mixed with sour cream or 1 carton natural yoghurt.

Mangoe Chutney - Lemon and Brinjal Pickle, poppadums, Bombay Duck.

DHAL OR LENTIL CURRY

Ingredients:

| | |
|---------------------------|------------------------------|
| 1/2 lb Lentils | 1/2 teaspoon ground chilli |
| 3 tomatoes (quartered) | 1 teaspoon salt |
| 1 oz butter | 1/4 teaspoon ground turmeric |
| 2 onions (finely chopped) | |

Method:

Fry onions, ground turmeric, ground chilli & tomato in butter until tender. Then add lentils and quart of boiling water and cook until tender.

CURRY INGREDIENTS

These can be obtained in Venlo (small shop on left-hand side of Market Street going towards the market) or Roermond. The following are the English and Indian names, which may be of help when buying:

| English | Indian | English | Indian |
|--------------|---------------------|----------------|-------------|
| Aniseed | Solif | Mustard Seed | Rai |
| Allspice | Seetul | Chillis | Lal Mirchi |
| Cardamon | Eelachie | Turmeric | Huldie |
| Mace | Jawatrie | Fenugreek | Mayti |
| Nutmeg | Jauphull | Garlic | Lasson |
| Cinnamon | Kulmie Darchini | Ginger (dry) | Sonr |
| Coriander | Dhunnia or Kotimear | Ginger (green) | Udruck |
| Cloves | Laoong | Poppy Seed | Khush-Khush |
| Cummin Seed | Zeera or Jeera | Asafoetida | Hing |
| Black Pepper | Kala Mirchi | Almond | Badam |
| Coconut | Nareul | | |

NOTE: Curry is best made in an earthenware dish or casserole. The less metal that comes into contact with curry spices, the better. Use good enamelware in preference to aluminium and wooden spoons which should be used for nothing else. If you make too much curry, don't worry, as it will taste better the next day or day after. Curry keeps very well in a deep-freeze.

Mary Everson



CO-EDITORS' NEW YEAR'S DAY PUNCH

| | |
|---------------------|-------------------------|
| 4 bottles Champagne | 6 bottles Ginger Ale |
| 2 bottles Sauterne | 1-lb whole Strawberries |

Mix together over a large cake of ice and add strawberries for embellishment and flavour. Brandy or rum may be added if desired, the ratio being 1 part to six parts of Punch.

A HAPPY NEW YEAR TO ALL OUR READERS AND CONTRIBUTORS.

Figaro Albert Penatzer

Ladies and Gents Hair Dressing Salons also Manicures

JHQ Shopping Centre - Tel. Mönchengladbach 59568

S.West Extension, Cambridge Drive - Tel. 58738

9.00 - 18.00 hrs daily except Monday

Ladies this concerns you!

Jersey and other fashion fabrics **direct from factory** in

RATHEIM, Millicher Str. 6
open Monday to Friday 9 till 4

or branch stock room in

RATH-ANHOVEN
(on road B 57 opposite car sales)
open Mo-Fr 9-12.30 and 2-6 pm
Sat 9-12

Terrific bargains! E.g. Lurex Jersey 150 cms wide only DM 6,-/metre, and just now many special offers for party and everyday wear.

Stoffverkauf
Jersey-Fundgrube

Peter
Hermann

Phone 02433 / 5530

Cut out this coupon
and get

DM
5,-



introduction discount!

INFECTIOUS DISEASES - Part 1

In Britain in the 17th century, nearly half of the child population died before their 5th birthdays. This kind of situation still exists in the developing countries and infectious diseases account for over one-third of all deaths in those countries. Today, less than 1% of deaths in Britain are from infectious diseases.

Social and environmental changes (better food, housing, sewage disposal etc) have contributed most to this improvement, but better medical care and especially mass-inoculation against the more serious diseases, also plays a very important part. For example: in 1943, before inoculation 3,000 children a year died from diphtheria – now a case of diphtheria is extremely rare.

Make no mistake, serious diseases like TB, diphtheria, Polio, tetanus and whooping cough have not disappeared. As long as all children are inoculated. these diseases will be very rare, but if we become complacent and do not get our children inoculated, then these diseases will return. Recently, there was a small outbreak of polio in England – in children who had NOT been inoculated.

The table below gives the standard plan for full immunisation of a child. Is your child up-to-date with his "jabs"?

| AGE | VACCINE |
|--|---|
| 6 months | 1st Diphtheria/Tetanus/*Whooping cough (triple) + polio |
| 8 months | 2nd Triple + polio |
| 12-14 months | 3rd Triple + polio |
| 18 months | Measles |
| 21 months | **Smallpox |
| Pre nursery or pre school booster age 3 or 5 | Diphtheria + tetanus. Polio |
| 10-13 years | BCG (against TB) |
| 11-13 years (girls) | German measles |
| Adults | Smallpox/Cholera/Yellow fever/TAB/Tetanus given as needed |

* Whooping cough vaccination has recently been the subject of some controversy. This vaccine gives life-long protection from a disease that can kill or cause permanent brain or lung damage to young children. Unfortunately, the vaccine can, on rare occasions, cause fits, epilepsy or brain damage (the risk of severe brain damage is something in the order of 13 per million vaccinated). The hazards of whooping cough are greater than those of the vaccine. All children who have a personal or family history of fits or epilepsy should NOT be vaccinated. If a child has a high temperature or a fit after its first triple, then it should not receive further injections of whooping cough vaccine. When these children are left out, the risk from vaccination for a normal child is very much less.

** Medically, (See table above) there is no need for smallpox vaccination in Europe. However, all countries still demand certificates of vaccination of smallpox from time to time. Until this stops, we in the Services are especially liable to need valid certificates. It is safest to have your child vaccinated from 21 months, when the risk of complications is lowest. No child with eczema should be given smallpox vaccinations. Pregnant women are not vaccinated during the duration of their pregnancy except if epidemic conditions exist.

YOU OWE IT DO YOUR CHILD AND THE COMMUNITY TO MAKE SURE THAT HE/SHE IS FULLY IMMUNIZED

If you are in any doubt about some aspects of immunization then ask your SSAFA Sister, nurse or doctor. **MEDICAL RECEPTION STATION**





Posted?

A special service for service families!

Give expert advice, have staff that care and the vans you see everywhere.

SHAW'S REMOVALS

Twice monthly service to and from Germany including:

- * complete customs clearance
- * storage facilities.
- * insurance.
- * packing.
- * distribution & collection in the U.K. on part load basis or special delivery.

For free quotations and advice contact either:

F.W. Shaw & Sons
(Worthing) Ltd.
82, Teville Road,
Worthing, Sussex

Mrs. E. Strong
Am Stern 28
5143 Wassenberg
Tel.: 02432 / 4629
Between 17.30-19.30 hrs.



AUTOMOBIL-ZENTRUM HAMMER + CO
"YOUR AUTHORISED BMW NATO DEALER"

NATO SALES DIVISION
NORMAN BANTHORPE

Tax-Free Prices **Nation-Wide Servicing**
OUR PRICES START AT DM 11600,--

We serve all members of the Forces exclusively
For Further Information Please Contact Us Today!
MR. NORMAN BANTHORPE Nato Sales Division
Hardterwald Straße 200 - 4050 Mönchengladbach 6
Telephone (02161) 550218 or 550318

BARGAINS - BARGAINS



Second Hand Furniture
Washing Machines
Refrigerators
Second Hand TV-Sets
with Guarantee
Colour and Black/White

Elisabeth Lambertz M'Gladbach, Hindenburgstr. 317 - Tel. 14350

KONRAD LENZEN

57 Hauptstrasse
Tüschchenbroich



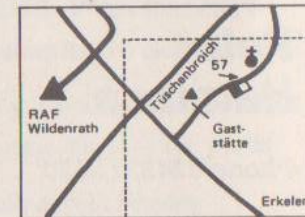
Tel. 02434-5518

Open Wed to Fri 10.00 - 18.00
Sat 10.00 - 12.00

Speaks English well

Pig breeder and master butcher; rears own strain of top quality minimum fat pigs. Quarter, half or whole carcasses sold - cut as requested ready for deep freeze or parties. Kidney, liver, ham, bacon and tongue available. Home-reared beef sometimes available, but can be ordered. **Own Slaughter room**, preparation room and cold store regularly inspected by government health authorities.

From Rearer to Buyer without middlemen means top quality meat cheaply.



POLICIES AND GREEN CARDS

FROM

ELLEN CULPECK

CAMBRIDGE DRIVE (ADJOINING FIGARO'S)
SOUTH WEST EXTENSION

Opening hours: Monday to Friday 9.30 – 17.30 hrs
Saturday closed

Tel.: M.G. 559655

ELLEN CULPECK – FORCES INSURANCE BROKERS

CAR - CARAVAN - TRAILER - MOTOR CYCLE - MOPED
BAGGAGE - HOLIDAY SICKNESS - TOURING - HOUSE-
HOLD - HUNTING - LIABILITY INSURANCE

TRAVEL BUREAU

JHQ Area

H
O
L
I
D
A
Y
S

Newly opened in JHQ shopping centre. We issue car- and passenger ferry tickets on the spot to the U.K. Package tours available world-wide. Famous Rhein/Mosel boat and coach trips. Car hire service.

See our English speaking staff for individual advice – free from obligation. We aim to please you.

TRAVEL BUREAU
JHQ Area
LOTTO - TOTO
W. KREMER

Tel. MG 559346
Opposite BP Petrol Station

C
A
R
F
E
R
R
I
E
S



RENAULT DUTY FREE SALES



■ Personal Service ■ The Best Prices ■ Immediate Delivery ■ Full Finance Facilities

Autohaus P. G. Bongartz

4056 Schwalmthal-Waldniel
Ungerather Str. 60
Tel. Schwalmthal 02163 / 41 35

Mr. Mike Crisp
Sales Manager: Tax Free Sales
Tel. Erkelenz 02431 / 33 86

Mr. Crisp visits JHQ by appointment or is in attendance at our showroom just three miles from JHQ Main Naafi every Saturday morning.

34 AEC (Cambridge House) and RAF FETC Part-time and Evening Classes 17 Jan - 1 Apr

A full programme of part-time and evening classes, covering a wide range of activities is again being offered at Cambridge House and the RAF Further Education and Training Centre during the Spring Term. The classes start on 17 Jan and end on 1 Apr.

The programme containing full details of the Cambridge House classes will be published and distributed later this month – further copies will be available from Cambridge House. Details of the classes organised by the RAF FETC have been published in SROs but newcomers can obtain details by ringing RA 4586 or 4748. However, as a guide to the subjects being offered, a list is published below:

34 AEC Classes

GCE SUBJECTS – English Language, German, Maths, Sociology, G & M Drawing.

CRAFT SUBJECTS – Hostess Cookery, Cookery for Male Students, Ikebana, Copper-beating, Pottery, Dressmaking, Embroidery/Fabric Collage.

COMMERCIAL SUBJECTS – Typewriting, Shorthand.

LANGUAGES – French, German (Oral, Colloquial, Housewives and Conversation).

ADP COURSES – Computer Appreciation, COBOL Programming.

RAF FETC Classes

GCE SUBJECTS – English Language and General Paper. No new enrolments are being accepted in the other GCE classes which started last term.

CITY & GUILDS – Operating Theatre Technicians, Photography.

LANGUAGES – German (Stages 1, 2, & 3).

CRAFT SUBJECTS – Woodwork, Ceramics – **please note that this is now a club.** Membership applications to be made to Mr Neilson-Marsh at Kent School or RAF Education Centre.

OPEN UNIVERSITY – The following courses will commence in February for personnel already accepted for foundation courses: Technology, Maths, Making Sense of Society, Humanities.

Enrolment will take place as follows:

34 AEC Classes:

At Cambridge House on 11 Jan from 1800-1900 hrs – all GCE, language and computer classes.

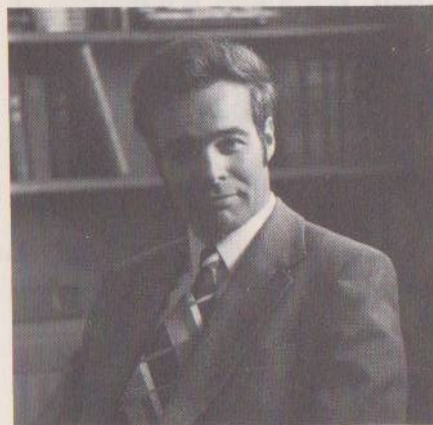
At Cambridge House on 12 Jan from 1800-1900 hrs – all craft and commercial classes.

RAF FETC Classes:

Service personnel may enrol during normal working hours between 3 and 8 Jan at the RAF Education Centre. Civilian personnel and dependants may enrol at Cambridge House under the arrangements outlined above.

Please note that it is normal policy to afford present students the opportunity to re-enrol in advance for those classes they are attending and this should be done as soon as possible. On enrolment, a fee of DM 8.30 is payable by UKBC and all dependants. There is no charge for Service personnel or students under the age of 18 yrs. Personnel enrolling at Cambridge House should complete the form in the published programme and bring it with them at the time of enrolment.

NEW HEADMASTER AT QUEEN'S SCHOOL, MR. J. H. N. LOVEGROVE, BA



G. Outhwaite

A graduate of Durham University, he has been with BFES in Germany for some 9 years. He joined the Modern Languages Department at Kent School in 1967, having previously taught at Arnold School, Blackpool and in 1972, he moved from Kent to Queen's as a Deputy Headmaster.

After a lot of planning, many problems, disappointments and delays, the new school buildings are now taking shape and the magnificent facilities approaching completion. There are currently challenges enough in running the school in the midst of turmoil, but Mr Lovegrove believes the most exciting and demanding tasks will be met in the next 2 years. During this time, three of the School's present sites will be closed down, the Upper School building refurbished and the School roll increased to approximately 1,050.

QUEEN'S SCHOOL PAIR BROADCAST TO GERMANY



BAOR PR

Two 15-year old pupils have been taking part in two West Deutsche Rundfunk programmes – "English for Juniors" and "English for Seniors" – short plays in English which are used as a means of demonstrating structures of the English language. Last year, Philomena Ryan took part and was invited again this year, her father being Sgt. GP Ryan, RAF G Communications Centre. Timothy Wawman, son of Lieut-Col. RJ Wawman of HQ BAOR Medical Directorate, after recording tests, was found to have the qualities sought by WDR. Tim was heard in November, and Philomena's play will be broadcast early this year.

CHARITY - SWEET CHARITY



BAOR PR

Children of St Christopher's School present Mrs Scott, Headmistress of St Francis' School for Handicapped Children, with the sum of DM 125 which the children raised through holding two jumble sales in the summer holidays.

L to R: Rebecca Petrie, Jane Coulcher, Sally Radnor, Kate Dobson.

* * *

Mrs C Scott, Headmistress of St Francis' School for handicapped children at Rheindahlen wishes to express her warm appreciation for the DM 1,130 cheque presented by Mrs Jeanette Wilson, the District Commissioner of Dusseldorf's Guides and Brownies. A splendid effort indeed.

* * *

GUILD OF ST HELENA would like to thank all those who supported the Christmas Fair on the 18th November by providing goods for sale, for coming along to the Fair to buy and to all those who so generously bought raffle tickets. The draw was made by Lady Beetham and the first prize, a patchwork quilt, was won by Mrs. Cynthia Green. DM 2,600. was raised and sent to Guild Headquarters to be used for Service charities.

* * *

ST PATRICK'S SCHOOL CHRISTMAS FAIR On Saturday, 27th November, despite the cold, grey afternoon weather, a magnificent turnout of adults and children arrived at St Patrick's School to enjoy themselves at the annual Christmas Fair which was opened by 'Uncle Bill' of BFBS. The result was an unqualified success, with satisfied customers and a record income. £200 has been sent to a U.K. charity and the remaining money will be used to buy additional scholastic equipment for the school. The Headmaster would like to take this opportunity of thanking all the Messes, shops and private individuals, who contributed so much to ensure the Fair's success.



RAF Pru

For a number of years, Mr. Arthur Wilcock, a retired RAF officer employed in HQ RAF(G) and his team of volunteer helpers, have painstakingly restored old toys to their former splendour, to present at Xmas to various local homes for mentally handicapped and under-privileged children. This year, some of the toys were sold at the Mönchengladbach Xmas Fair and DM 2,800. was handed over to German charities for distribution, DM 1,000. more than last Xmas. 4 Lorry-loads of toys have been sent to the Hephata Home for Handicapped Children, 1 lorry-load to a girls' orphanage in Roermond, and 150 dolls to the poor Hardt settlement.

Mr. Wilcock tells us that he and his team have enough toys to keep them busy until March and he is most grateful to the many people who responded to his appeal for toys. Our photograph shows the Station Commander, RAF Rheindahlen, W/Cdr R Ford with Mr. Wilcock and some of the lovely toys.

ACROSS (GERMANY) 1977

This year, Across (Germany) has once again been asked to arrange for a group of chronically disabled people, who would otherwise be permanently confined to house or hospital, to visit Rheindahlen for a holiday. To help fund this project, the Committee are planning a Carnival, Gala Charity Concert and a Flag Day. They hope that these events will receive the same generous support that, in the past, has provided the parent UK Trust with an hydraulic tail lift for one of its giant coachlike "Jumbulances" and a long wheel-base Landrover servicing support vehicle.

However, it is not only financial help that is required; the Committee has been decimated recently by postings and if you can't give your full-time support, we shall as usual be looking for part-time waiters, dishwashers, cleaners and bedmakers when our disabled guests arrive in August. Although these might sound unexciting tasks, we can guarantee that you will have as much fun helping our guests as they will. If you are interested in being a part of this worthwhile venture, contact the Secretary, Flt Lt Bob Howe (RA 4576) or Major RC Williams (RA 2605) who will give more information.

HARDTER WALD RESTAURANT

- Onkel Gustav -

(under the management of Waltraud and Dirk Siegers)



Party Rooms — Childrens' Playground
Miniature Zoo

During 1st Three Weeks in January

Opened Only on Saturdays and Sundays

- DISCO on Saturdays -

Daily Fresh Mussels and Yugoslavian Cuisine

Hot meals served until 2230 hrs.

Cold meals will be available until 0100 hrs.

(Warm meals will be served until 0100 hrs.,
when booked before 2200 hrs.)

For your party our Music Corner is available for
hire at DM 20,00 per hour.

Closed every Thursday

Tel. MG 02161 / 559636



BARBECUE

STEAK-HAUS

Propr. J. Thiel

Beeker Straße 60 — 5144 Wegberg

Our offer entails a daily changing menu, varying
from International steak-dishes to refreshing ice-
creams.

Friendly service and a selection of drinks are a
matter of course.

We would be very pleased to see you. Drop in
and have a look. Friday is rest day.



Why not have a meal and a few drinks in our place?
(Always fresh chickens)

Not far from the JHQ - English spoken

Gaststätte Maureen & Egon Bley

Frankenfeld 9 · Mönchengladbach-Hardt,
Tel. 559797 · (Closed on Tuesdays)



Dave Humphrey

"A FUNNY THING HAPPENED ON THE WAY TO THE FORUM"

For those expecting or even hoping for a 'sense of humour failure', read no further. As a result of good publicity the Garrison Theatre was just about packed every night and enthusiastic audiences and rapturous applause voted the RATS production of 'Forum' a great success, justifying the element of risk in staging an ambitious show with a difference.

As a production, 'Forum' was difficult to pin down. It was no play and, with only one reputable singer, was decidedly not a musical. It had nothing to say (if ever a message is needed); it could be said that it was almost a Roman G & S Carnival. Thankfully its greatest achievement was that the play did not sink to the bawdy depths plumbed by Frankie Howerd on TV. This was undoubtedly due to the careful production by Colin Mole, who doubled up (no easy achievement) as Lycus, a buyer and seller of courtesans, giving the reliable acting performance to which we have become accustomed.

The triumph of the show was Peter Bryant, as Pseudolus a slave, in sadly his last performance before posting. He dominated the stage in a very large part and inspired the rest of the cast; it is not meant as complimentary to the others, but the action seemed to slow down when he was not on stage. Come back soon, Peter.

Dave Hunt, the slave to Senex and Domina, was quite in his element as the funniest man on stage. His sly winks, facial contortions and mini Mr Michelin movements contributed a lot to the success of the show. It was great to see Liz Miller on stage again, having handed over the thankless (but nevertheless much appreciated) musical preparation of the production to Jeanne Taylor. Her acting talents could well be used more often.

What is there left to say of Grant MacLennan that has not been said already, in one way or another? He thoroughly enjoyed himself as Miles Gloriosus, a major military captain. He was so perfectly cast that no demands were put on his acting ability; in this his final appearance, his singing had an attack and quality that strangely enough we have not heard before in a wide range of glittering performances.

Space does not allow comment on one or two cameo parts, or on each of the courtesans, but suffice it to say that their various talents were illumined only too briefly. Among a very leggy cast, Chris Dodsworth, as Hero, had undoubtedly the best legs on stage. What a good job, for the sake of his health, that he didn't descend among the audience! Chris Etherington, considering the tragic circumstances and short notice, performed remarkably well as Senex, an amusing dirty old man.

For the first time in very recent memory, there was a West End atmosphere evident in the theatre. This was partly the production, partly the good audiences and partly the contribution of the Regimental Band of the 1st Battalion The Staffordshire Regiment (The Prince of Wales's). Mr Lee, the Bandmaster is to be warmly congratulated on the sympathetic handling of a non-musical cast and the quality of musicianship of his band. Bless them, they even laughed at the jokes. Hopefully they will be invited again.

In summary, it must be said that although it did not have the best singing or even the most noteworthy acting of the year, 'Forum' was the best entertainment we've had in the theatre in 1976, a year which has seen some memorable performances. Roll on 1977's cornucopia of dramatic delights.

T. C.

ARIEL THEATRE GUILD

in conjunction with

RATS and WRMS

present

TOAD OF TOAD MALL

by AA Milne

The hilarious family show

Jan 2 to 9th

Box Office Jan 3 to 7th

Rhine Army 2262 1300-1630

THE WEST RHINE MUSICAL SOCIETY

The West Rhine Musical Society will present 'OKLAHOMA' in the Garrison Theatre Rheindahlen from Tuesday 1st to Saturday 5th February 1977. The show will be augmented by the Band of the 13th/18th Hussars and will commence at 8pm on 1st-3rd February inclusive and at 8.30 pm on the 4th/5th February. Tickets will be DM 6 and DM 5 with half-price for children aged 13 yrs and under and reduced prices for parties of 10 or more for the Tuesday, Wednesday and Thursday performances only. The Box Office will be open at the following times:

10-12 noon Garrison Theatre Sat 22nd January

10-12 noon JHQ NAAFI Sat 29th January

1.30-5.30 pm Garrison Theatre weekdays 24th January to 4th February.

Garrison Theatre Tel No: RA 2262

Stadttheater Mönchengladbach

| | | |
|--------|----------|--|
| 5 Jan | 2000 hrs | Premiere Poland Blood – Operetta by Oskar Nedbal |
| 6 Jan | 1930 hrs | Marriage of Figaro – By Mozart |
| 8 Jan | 2000 hrs | Marriage of Figaro – By Mozart |
| 11 Jan | 2000 hrs | Marriage of Figaro – By Mozart |
| 13 Jan | 2000 hrs | Symphony Concert (Kaiser-Friedrich-Halle) |
| 15 Jan | 2000 hrs | Poland Blood – By Oskar Nedbal |
| 16 Jan | 1600 hrs | Poland Blood – By Oskar Nedbal |
| 19 Jan | 2000 hrs | Symphony Concert (Stadthalle Rheydt) |
| 22 Jan | 2000 hrs | Poland Blood – By Oskar Nedbal |
| 23 Jan | 1100 hrs | Youth Concert |
| | 1930 hrs | Poland Blood – By Oskar Nedbal |
| 28 Jan | 2000 hrs | Poland Blood – By Oskar Nedbal |

Tickets may be obtained through MILATRAVEL

**RAFG BAND GALA CONCERT
PROCEEDS ARE PRESENTED**



The Royal Air Force Germany Band Director of Music, Squadron Leader Eric Banks, hands over the proceeds of the Band's Annual Gala Concert in October to the Deputy Commander of RAF Germany, Air Vice-Marshal Tim Lloyd. The Band raised some £125, which will be donated to the RAF Benevolent Fund.

Belgian Dynasty Day Reception in Rheindahlen Rooms on 15th November.



NORTHAG/TWO ATAF PI

Major Gen and Mrs G A F Van der Veen, DCOS NORTHAG, welcome Wing Cdr and Mrs. F. McClory of 2 ATAF.

RHEINDAHLEN

MONOUR FOR HERR OTTO KERRMANN, MBE



RAF PR
Herr Otto Kerrmann received his insignia an honorary member of the Civil Division of the Most Excellent Order of the British Empire from the British Ambassador to Bonn, Sir Oliver Wright. Herr Kerrmann has worked for the RAF for over 30 years and should have retired in March but was considered "too valuable to lose".

**PSA WIVES CLUB SAY FAREWELL TO THEIR PRESIDENT,
MRS STELLA AVELING**



Mrs Aveling is returning to the U.K. where her husband, Mr Alan Aveling (who has been PSA Regional Director, Germany Region for the last 3 years) is taking up the post of Director, Estate Management Overseas, at Croydon.

At a farewell coffee morning and luncheon at the Lutelforster Muhle, Mrs Aveling was presented with a water colour painting of the Munster Kirche Monchengladbach by Mrs Lillian Robson, Chairman of the Wives Club. The group photograph shows the Ctee members:

L to R: Mrs Chris Moss, Mrs Robson, Mrs Sandy Fraser, Mrs Olwen Whitehead, Mrs Ann Everett, Mrs Aveling, Mrs Jean Ramsey, Mrs Angela Clemits, Mrs Edith Nalton, Mrs Brenda Boyce and Mrs Joyce Bramford.

ROUNDAABOUT

NATO MUSIC FESTIVAL 1976



NORTHAG/TWO ATAF JPI

On 2 December 1976, Herr Theodor BOLZENIUS, Oberbürgermeister Mönchengladbach together with Air Marshal Sir Michael BEETHAM COM-TWOATAF handed over a cheque for DM 35,000, the proceeds of the NATO Music Festival held in the Bökelberg Stadium Mönchengladbach on 4 September 1976, to Mr PIJNACKER-HORDIJK, the Deputy High Commissioner in Germany of the World Refugee Organisation. American, Belgian, Danish, Dutch, French, and German military bands took part, including BAOR and RAF(G).

FROM BROTH TO TROTH



BAOR PR

Cupid's arrows have been flying among the cottage pies and steamed puddings in 68 Sqn RCT Cookhouse. The lads of the ACC have hit on the right recipe for the WRACs and the result is one couple married, and two others nearly ready to take the plunge. Pictured here are, left to right, Privates Frankie McManus and Alex Porter, Private (Mrs) Sonia Miles and L/Cpl Ken Miles, and Pte Susan Soltysiak and L/Cpl D. Flowerdew. All serve at 68 Sqn which supplies drivers for vehicles serving HQ BAOR.



BAOR PR

A Civil Servant since he left the Army, our picture shows him receiving a farewell gift of a model amphibious bridge from Brig. A. Needham, DEME, HQ, BAOR, on the occasion of his final retirement.

FAREWELL TO MR STAN DUNCOMB, OBE ONE-MAN 'COMBINED SERVICE'!

Mr Duncomb has said his third and last farewell to the Services. After a war-time career in the Royal Navy, which involved working with landing craft in the Mediterranean and participating in the Anzio operation, he joined REME and retired as a Major, with service in Palestine and BAOR behind him in his 20 years. At one stage, he worked with Sir Ronald Bailey, inventor of the famous bridge system.

C-IN-C'S TRAIN RUNS OUT



General Sir Frank King hands over its Visitors Book to Maj Gen Carpenter, CTO, for display in the Royal Corps of Transport Museum, watched by Brig Regan, CTMO, BAOR. The diesel train, stabled at Rheydt, came into existence in 1955 under the then C-in-C General Sir Richard Gale, and its distinguished passengers over the years have included HRH The Princess Anne, HRH The Princess Margaret, HRH The Duke of Edinburgh, Lord Snowdon and Sir Winston Churchill, to name but a few.

Where sight
is concerned
there can be
no compromise
with quality

OPTIK HILGER

Ophthalmic and dispensing
Contact lens specialist

Soft contact lenses
DM 392,00 without Mehrwertsteuer

4050 Mönchengladbach 1

Hindenburgstraße 236
Main shopping street near Railway Station
Tel 16982

You need not pay Mehrwertsteuer if you buy through
your mess, PSI office or PRI



RENAULT EXPORT SALES

MAIN OFFICE NORTHERN EUROPE: ISSELS GMBH & CO KG, RHEYDTER STRASSE 225
4050 MÖNCHENGLADBACH 1

TEL. 02161 / 13045



THE NEW RENAULT 20 TL

PRICES REDUCED

on all 1977 models.

- Low deposit finance for ALL ranks with insurance for one year.
- Naafi approved dealer.
- Trade-in or disposal of present car.
- Immediate delivery from stock.
- English speaking sales and workshop staff.



**For more information or
test drive post this coupon
NOW!** →

I am interested in Renault

Name and Rank

Military Address

Telephone number

MQ Address



Gardening Notes for January

January is the time to browse through the seed catalogues and in doing so, we should remember that 1977 is Silver Jubilee Year so there is bound to be a run on red, white and blue flower seed. What a splendid opportunity this year will be to show our continental friends how patriotic we are, so let's plan now to add a little Red, White and Blue to our MQ gardens.

Annuals provide us with our main sources; the Hardy Annuals (HA) can be sown direct in the ground where they are to bloom and are best sown when the soil is not too wet or frozen (March/April). Half Hardy Annuals (HHA) require a greenhouse to really get them going and are best purchased as plants from the Nursery in May.

Alysum Little Dorrit 6ins. must be one of the easiest and best white flowers; it is often treated as a HHA but is very easy to grow by sowing direct. Candytuft Giant White Hycinth 15ins and Red Flash 12ins is a good crimson. Dimorphotheca Glistening White 9ins is a dainty white daisy. Something a little unusual and of interest to the floral arranger, Euphorbia Marginata 20ins. Larkspur 3 1/2ft is available in white and blue but does not last too long. Lobelia 6ins is also available in white and blue; although an HHA it can be sown direct late April/May.

Anchusa Blue Angel 9ins — make sure you do not purchase the better known perennial form. There are many forms of Cornflower from 9ins to 2ft but make sure it's blue. Echium Blue Bedder 12ins would do very well in Rheindahlen. Convolvulus Royal Ensign 15ins is a compact form of the better known climber. Nigella (Love-in-a-Mist) 15ins Miss Jekyll is a lovely blue. Phacelia Campanularia 9ins and Blue Bonnet 15ins are both well worth trying. Salvia Horminum Blue Bird (Clary) 15ins and Viscaria Blue Angel 9ins.

For Reds, try Linum Scarlet 15ins better known as Flax. A brand new Nasturtium called Red Roulette 12ins has arrived just in time and must be easy to grow. Poppy Ladybird 18ins. Annual Sweet William Red Empress 12ins. A new everlasting flower Helichrysum Hot Bikini is only 12ins high and a good crimson, it is a HHA but try sowing it April/May.

How about a hedge or group of sweetpeas — Welcome-red, Majesty-white, and Noel Sutton-dark blue. Sow a few in pots on the window sill at the end of the month and once they have germinated, pot them in deep pots and keep them cool.

The wax 1 litre milk cartons pierced at the bottom would be ideal. This is my TIP OF THE MONTH.

Happy Gardening in 1977.
Adam Hardgraft

ARIES CROSSWORD No. 8 — SOLUTION

ACROSS 1. Epic, 4. Glenegles, 9. Animal, 10. Idealist, 11. Syllabus, 13. A small drop, 16. Scaw, 17. Asps, 21. Schoolgirl, 21. Cellar, 23. Aberdeen, 25. Hazel nut, 26. Eleven, 27. Characters, 28. Ness. — DOWN 2. Penny, 3. Camilla, 4. Golfball, 5. Edinburgh Castle, 6. Evens, 7. Gallons, 8. Easy chair, 14. Sassenach, 15. Proneness, 18. Sit near, 20. Gudgeon, 22. Conic, 24. Edens.

Birds in your Garden

A well-stocked bird table is probably the surest way of attracting birds to your garden. Last month's article showed how to make a simple bird table and now for some hints on how to attract birds to it.

All the tit family, including the Long Tailed Tit should come to the table if peanuts, suet or fatty bones are provided. Cooked potatoes, stale cake, apple cores, chopped bacon rinds, raisins and cheese will all have their devotees. Finches will be attracted by special ready-made mixtures such as "Swoop" or local seed mixes available from pet shops. Suet is good for cold weather as is coconut in the shell — this should be cut in to two halves and hung bell-like. Any fruit cut up small will be eaten — particularly by thrushes and blackbirds during a hard spell.

A word of warning: do not put out food and then stop during a cold spell. This will result in the death of those birds who have come to rely upon you.

CONTRIBUTED BY THE RHEINDAHLEN BIRD-WATCHING GROUP

PADRE'S CORNER

CONFIDENCE — A LIFETIME JOB

The beginning of a New Year is a time for New Year resolutions. The following may be a help to making and keeping your resolution for 1977.

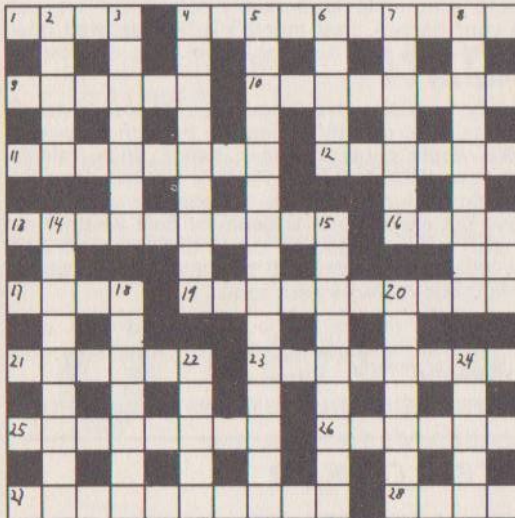
This 5-step programme for building self-confidence was developed by a personnel specialist responsible for management training:

1. Take a mental inventory of recent accomplishments as well as your assets as a leader. This will boost your morale.
2. Isolate one personal deficiency or weakness and concentrate on removing or improving it.
3. Increase your knowledge of the area you are involved in. Lack of information can often prevent us from tackling something new.
4. Take on an assignment once considered too tough. This will test how well you have completed the first three steps.
5. Work on your personal appearance. The way you dress, walk, talk, etc reflects the opinion you have of yourself.

As a final note, the expert cautions that confidence must be self-generated — it cannot be imposed by others. Only you, with God's help, can harness the vast potential for good that He has given you. Greet each new day with the prayer, "O Lord, help me to remember that nothing is going to happen to me today that You and I together can't handle."

by Rev D. V. Beer, Command Senr RC Chaplain,
RAF GERMANY

Featuring a wild story for Hogmanay!



**C
R
O
S
S
W
O
R
D
No. 8
by Ariès**

CHAPTER ONE (ACROSS)

1. A great story from the wars of the Picts ... (4)
4. ... of course, in Scotland, in which film star Anna is trapped by magled legs ... (10)
9. ... and a beast of a backward Africa ruler is caught by a novice ... (6)
10. ... who strives for perfection with a novel thought on combat. (8)
11. The bully gets his dessert when he combines with Able Seamen ... (8)
12. ... to frustrate the spirit ... (6)
13. ... of Sam Pollard drunk on a wee dram! (1, 5, 4)
16. Dad and Florence leave Scapa Flow for the Cape ... (4)
17. ... pass strange reptiles ... (4)
19. ... and so fall into stormy loch with girl. It turns out she is a learner ... (10)
21. ... coming in to cancel tickets for famous Scottish 26 ... (6)
23. ... who take Aden beer from Northern city ... (8)
25. ... and hunt with zeal for fruit ... (5, 3)
26. ... for a side, perhaps ... (6)
27. ... of personalities who make tea and put on a show for the Queen before going south ... (10)
28. ... to the monstrous Loch (4)

CHAPTER TWO (DOWN)

2. After dredging with open nylon nets for money ... (5)
3. ... the girl finds a mill with about a hundred rising up ... (7)
4. ... they travel a fair way - to 4 perhaps ... (9)
5. ... where she cat burgled in strange fortress ... (9, 6)
6. ... and in Loch Leven sensed a 50/50 chance ... (5)
7. ... of quantities of whisky, perhaps ... (7)
8. ... in a simple resting place ... (4, 5)
14. ... made of sash bound around reserved canes. A man from over the border ... (9)
15. ... shows a tendency in favour of the North East of the monstrous Loch ... (9)
18. ... to have a seat close by ... (3, 4)
20. ... to fish from. Gone and dug ... (7)
22. ... up Commander in Chief about a ring with a cone-like cross section? (5)
24. But it all ends happily in the gardens where it all began! (5)

(SOLUTION ON P. 13)

WINTER DRIVING

Safety Belts - It is compulsory to wear them at all times (including passengers).

Driving - Handle your steering, brakes and accelerator pedal gently to avoid skidding.

Braking - Keep twice the normal distance between you and the vehicle in front.

Overtaking - Be extra careful and allow greater distances than normal. Remember snow and slush can block your vision.

Ice/Snow - Watch out for ice patches on and under bridges, in shadows etc. On ice and snow drive in the highest gear possible and change down to reduce speed.

Lights - Use dipped headlights whenever visibility is poor (fog, snow, heavy rain etc). Remember it is an offence to drive on side lights only.

Ventilation - Make sure your vehicle is well ventilated. Don't drive with all the windows closed and the heater full on.


Tiredness - If you feel tired, don't drive on. Pull into the nearest parking place and rest. On a long journey, stop and rest every 2 hrs, or more often if conditions demand greater concentration.

JOINT ROAD SERVICE SAFETY COMMITTEE

without obligation our large selection of

SECOND HAND CARS

Our salesman Herr LEHMANN would be glad to come and fetch you and take you back home again without obligation. He will be pleased to advise you on all questions regarding hire purchase, insurance, and how to save the 11% added value tax.



When Do We Meet?
Mönchengladbach



Phone MG 31166
Burggrafenstr. 55-79

NAAFI NOTE BOOK

With the expense of Christmas well and truly behind us, our bank balances may be a little on the low side – mine is, I know. So we'll all be watching the pennies extra carefully as we do our shopping. If you've made a new year's resolution to hold back on the housekeeping and are being extra diligent in the way you spend it, Naafi will certainly help you keep on the straight and narrow.

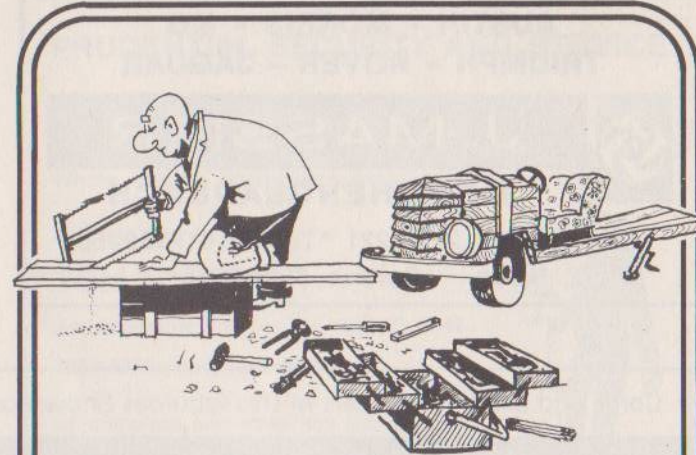
Starting on the 4th of this month, a special offer promotion gets under way. As usual, it'll include confectionery, general foods, household products and toiletries – in other words a wide spread of items in everyday use in the household and normally constituting a fair whack of your housekeeping budget. Full details of all the bargains are contained in the leaflet – so do pick up your copy.

In addition to the special offer promotion that runs till the 29th, there will be two double star super special weeks, with attractions from the butchery, the fruit and veg counters and the rest of the foodhall. Full details of those promotions will be released during the Naafi news broadcast on BFBS during the Monday morning breakfast shows.

At the end of the month, on 31st to be precise, the first star buys promotion of the year kicks off. Although I can't reveal specifics, I can let you know there are some fantastic bargains that will certainly save you money.

I'm not given to making predictions, but I'm sure in 1977 everyone will be more price-conscious than ever. Naafi has a full-time German speaking price tester in this area, one of a team of ten throughout BAOR. She visits all the big shops in the vicinity, such as Kaufhof, Divi, Super Magazine and so on. She and her colleagues compare like for like and where wide differences are found, we will take action to ensure our competitiveness. But one price tester in this area can't possibly hope to cover every shop, so if you have found an item in an outside shop that you feel is better value than a similar item in Naafi, let us have the full details. At recent customer relations meetings, committee members have drawn our attention to a few items obtainable on the market outside. As a result some of those items have since been included in our stock range. Incidentally, our testers use a shopping basket based on a similar number of items used by the Financial Times (80-85). In each month's shopping basket comparison last year, Naafi was shown to be competitive overall. We intend to keep that record up in 1977.

Geoff Bowden



WHY HAVE PROBLEMS

THE NAAFI CAR PURCHASE PLAN INCLUDES

COMPREHENSIVE HIRE PURCHASE

- LOW INTEREST CHARGES
- FREE LIFE COVER
- INSURANCE PREMIUM INCLUDED IN HP AGREEMENT
- COVER AGAINST PREMATURE REPATRIATION

APPOINTED DEALER SERVICE

The network of approved dealers means a safe and simple transaction – every time.

DISCOUNTS ON NEW CARS

The Naafi car representatives can give you up to the minute information on discounts available on new cars from leading manufacturers.

**AUSTIN - MORRIS - MG
TRIUMPH - ROVER - JAGUAR**



J. MASSIER

MÖNCHENGLADBACH

Krefelder Str. 219 - 221 * Tel. 02161/183250

Sales Service Spares



AUDI

All Cars at special prices
for NATO Forces.

Volkswagen and Audi Service-Station
with Computer-Diagnostic-Centre

NATO-Agency GEBR. GILLISSEN KG.

406 VIERSEN, Krefelder Str. 19-21, Telefon 02162/12363

Permanent show of new and second hand cars.
Monday's until Friday's 8-18 hrs. Saturday's 10-12 hrs.

Come and See Leyland cars in this fabulous Showroom



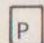
Up to a dozen models on show
British staff to advise on all monetary matters
Best and cheapest H.P. tailored to your needs
Complete privacy whilst discussing your purchase
Immense stocks of RHD cars NO-ONE has better supplies
Large ultra-modern Service Station - naturally factory trained staff

R. Rankin & Co

Moenchengladbach 2 - Rheydt - Tel. 02166 - 49055

Schowrooms: 111 Limitenstr. - Service: 17 Druckerstr.
or see Mr. Benn opposite Naafi Monday and Friday 12.00 - 5 pm

from Brüggen via Rhein-
dahlen village - signs for
Rheydt - in town pass the
Kaufhof - right at 2nd
lights - 80 yds on left is
showroom.

 diagonally opp.

BRITISH



LEYLAND

**Austin
Morris
MG
Triumph
Rover
Jaguar**

WHAT CAN I IMPORT

The mass exodus of BFG cars over the border into Holland is a familiar sight on Saturdays but difficulties can arise from these shopping expeditions if one is unaware of the Customs regulations, as some of our readers have obviously discovered! Recently, the Co-Editors were asked if the Rheindahlen Bulletin could publish some information on German Customs regulations, particularly concerning the importation of food and other domestic items. We approached the British Frontier Service for guidance and discovered that, to reproduce every relevant ruling in this magazine is, frankly, impracticable, but the BFS advised that the following points might be of the greatest use to our readers and we have also included some general reminders: Importation of Foodstuffs (but see below for special rules regarding the importation of fresh meat).

As a general rule, BFG personnel living in the Rheindahlen area can import into Germany up to a week's NORMAL family groceries once a week. What constitutes a "normal" amount is not specified but it is suggested that one would be unwise to load a minibus (for example) to the roof with food and expect to pass it off as "a Week's normal groceries". Nor will the excuse "I'm doing the shopping for my friends/neighbours" be acceptable to the Customs officer either! Don't forget the special rules relating to the importation of tea, coffee, tobacco etc.

IMPORTATION OF FRESH MEAT

THIS IS PROHIBITED except for amounts not exceeding 3 Kgs brought in one's personal baggage. Therefore, if you are thinking of restocking the deep-freeze, you will do well to buy your meat in Germany. However, fresh poultry weighing over 3 Kgs can be imported so long as it is in the form of a complete carcass ie. if pieces of fresh poultry are imported then the 3 Kgs restriction applies as above.

DUTCH VAT

If you are contemplating buying expensive items (ie. costing over DM 200) in Holland, did you know that BFG personnel can reclaim the Dutch VAT in certain circumstances? For more information on this topic, contact the British Frontier Service who can also supply the necessary application forms.

IMPORT AND EXPORT LICENCES

As you all know, items imported and exported by BFG personnel, other than through Service channels, require a special licence. These licences are obtained by sending a completed BFG Form 60 (available from your unit) to the British Frontier Service who then arrange for the issue of the licence. Please give as much notice as possible (normally 4-6 weeks) and, to avoid delays, make sure the Form 60 is correctly completed.

IMPORTATION OF PET BUDGERIGARS AND PARAKEETS

There are special rules governing the importation of caged birds. Remember to apply to the BFS for your special permit before you bring one into Germany.

IMPORTATION OF MEDICINES (a recent restriction)

It is forbidden for BFG personnel to import the following proprietary brand medicines into Germany: Kwells, Veganin, Codis tablets, Famel Cough Syrup, Gee's Linctus, Metatone tablets, Codeine tablets.

GENERAL CUSTOMS ENQUIRIES

The British Frontier Service, as Customs agents for the British Forces in Germany, are always pleased to answer genuine enquiries about Customs regulations. Therefore, if you have any questions as a result of this article, please ring them - not us! The address and telephone number are as follows: The British Frontier Service, Düsseldorf, BFPO 34. Tel no: Rhine Centre 512 or 602.

CUSTOMS BORDER AREA

The village of Hardt, part of Rheindahlen and all territory West of the Hardt Rheindahlen road including JHQ, are part of a Customs Border Area (Zollgrenzbezirk). In that area the German Customs Authorities are permitted to stop vehicles and personnel, and carry out searches. All personnel called on to halt by the Customs Police will do so, and immediately declare their status by the production of MOD Form 90 or Identity Card.

PRUDENTIAL SECURITY AND SERVICE

World Wide Cover on Acceptance.

No Restriction for Service Risks on Whole Life or Endowment Assurance.

Consult Your Local Rep.

TOM STRINGER

Am Hasenberg 24 - Tel. (02166) 3544

4050 Mönchengladbach 2

or complete and send him the coupon below

Rank & Name:

Address:

Phone No. if any:

Age next Birthday:



YOUR LOCAL DEALER

Sales - Service - Spares

AUTO VENNEN

Vorster Straße 329 - Telefon 559375

4050 Mönchengladbach 6

- Special Repair Service
- Diagnostic Service
- Optical Axle Measurement
- Brake Testing Stand

SPORTS

ARMY SPORTS FIXTURES FOR JANUARY

| RHINO'S RFC | | | |
|-------------|-------|----------------------------|------------|
| DAY/DATE | SPORT | TEAMS | VENUE/TIME |
| SAT 8 JAN | RUGBY | RHINO'S v RAF WILDENRATH | 'A' 1400 |
| WED 19 JAN | RUGBY | RHINO'S v RAF WILDENRATH | 'A' 1400 |
| SAT 22 JAN | RUGBY | RHINO'S 1st XV v 3 BAPD | 'A' 1400 |
| SAT 22 JAN | RUGBY | RHINO'S 2 XV v DUSSELDORF | 'B' 1400 |
| SAT 29 JAN | RUGBY | RHINO'S 1 XV v RAF BRUGGEN | 'A' 1400 |
| SAT 29 JAN | RUGBY | RHINO'S 2 XV v RAF BRUGGEN | 'B' 1400 |

| HOCKEY | | | |
|------------|--|--|------|
| MON 10 JAN | | BAOR INTER UNIT WOMENS SERVICES HOCKEY TOURNAMENT. TOP AND BOTTOM RED SHALE PITCHES. | 0900 |

| SQUASH | | | |
|------------------|--|---|------|
| 17th to 21st JAN | | BAOR SQUASH CHAMPIONSHIPS. ARMY SQUASH COURTS. | 1000 |
| 26th to 28th JAN | | INTELLIGENCE AND SECURITY GROUP (GERMANY) INTER SQUASH COMPETITION. ARMY SQUASH COURTS. | 1000 |

SOCCER
See RAF Rheindahlen Inter-Section Soccer.

RAF RHEINDAHLEN INTER-SECTION SOCCER

The following is the league fixture list for January.

| | | |
|----------|--|---|
| Jan 9th | RAF Wegberg V BAOR Sig Trp 11 SU 'B' V 6 Int/PID HQP&SS/2ATAF V NAAFI Scribes 'A' V Kent School 11 SU 'A' V Marlborough JRC MES/SHQ V Queens School | Wegberg RAF 5 Garrison-C Garrison-B RAF 2 RAF 3 |
| Jan 16th | 11 SU 'B' V Kent School RAF Wegberg V HQP&SS/2ATAF Scribes 'B' V BAOR Sig Trp MES/SHQ V 6 Int/PID 11 SU 'A' V Scribes 'A' NAAFI V Queens School | RAF 4 Wegberg Garrison-B Garrison C RAF 5 Garrison-E |
| Jan 23rd | Kent School V Scribes 'B' 11 SU 'B' V NAAFI Marlborough JRC V RAF Wegberg Queens School V 6 Int/PID MES/SHQ V BAOR Sig Trp 11 SU 'A' V HQP&SS/2ATAF | Garrison-C RAF 2 Garrison-B Garrison-E RAF 3 RAF 4 |
| Jan 30th | BAOR Sig Trp V Kent School RAF Wegberg V 11 SU 'A' 11 SU 'B' V HQP&SS/2ATAF Marlborough JRC V MES/SHQ Queens School V Scribes 'B' Scribes 'A' V 6 Int/PID | Garrison-E Wegberg RAF 5 Garrison-C RAF 2 Garrison-B |

* It should be noted that fixtures are subject to alteration at short notice.



RAF RHEINDAHLEN
AUTUMN GOLF MEETING

This was held at the RAFG Golf Club on 12 November in fine golfing weather for the 36 competitors. Fit. Sgt. H. McQuade, finding the melting frost to his liking, produced the best individual score of the meeting.

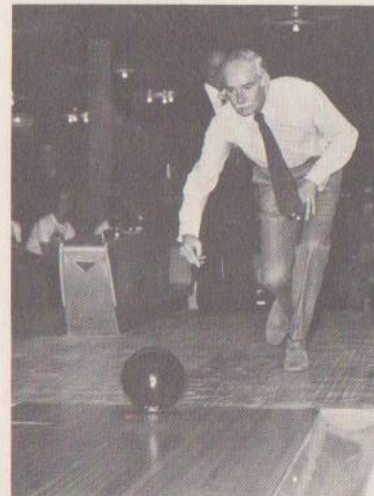
Mrs Barbara Ford presented the prizes for the day's competition and took advantage of the occasion to present the Rheindahlen Vase to Fit Lt C. E. Smith, winner of the Summer Match Play Competition.

D. ALLEN

1976/7 LADIES OPEN SQUASH TOURNAMENT

The tournament was held at RAF Rheindahlen on Saturday and Sunday 20/21 November. In all, 17 competitors took part from RAF Stations within Germany and the standard proved to be high. Rheindahlen was well represented by: Fit Sgt Winspear, SACW Welford, SACW Temperley, SACW Pfeiffer, Mrs. Torbitt, Mrs. Anderson, Miss Gough, Mrs. Duncan and Mrs. Cox. SACWs Welford and Temperley met in the quarter-finals but SACW Welford was unfortunately beaten in the semi-final. Mrs. Duncan also reached the semi-final stage but lost to the eventual winner of the tournament, Mrs. Dale of Wildenrath. The finals of the Plate Competition were between two Laarbruch ladies, SACW Wilcox and Mrs. Tily, the latter being the winner after an exciting match containing many spectacular rallies.

Congratulations to all who took part on the high standard of play and sportsmanship shown. The outlook for WRAF Germany Squash in the coming year is extremely promising.
Pam Burgoyne



FIRST BOWL

On Saturday, 13th November, the Rheindahlen Garrison Commander, Colonel J. Gallie, opened the new Bowling Centre in Viersen, located opposite the Supply Depot. A tournament was held the contestants being members of local German and NATO Bowling Leagues. United Viersen, a NATO team, won the event and this was captained by Bruce Legg of JHQ Rheindahlen.

FC Line

Rheindahlen Saddle Club



COMPETITIONS

Since the Saddle Club Two Day Show at Wegberg, which was reported on in the September issue of the Bulletin, we have almost completed a very busy competition season. Club members and their horses, besides entering local German shows, have travelled to places such as Paderborn, Dortmund, and Sennelager in search of rosettes!

Sennelager was also the venue for this year's BFG Pony Club Camp which was attended by 140 children from throughout BAOR. The Rheindahlen Saddle Club contingent comprised 16 children, 9 horses/ponies, and 2 instructors. Of the successes achieved at the Camp the most notable were -

- a) The award of "Most Improved Rider", which went to Michelle Jaques.
- b) Anna Jones and Lynda Linington passed the Pony Club "B" Test which is a very high standard to attain and is usually beyond the reach of those who do not have their own ponies. Anna, at 14 years of age, was only just old enough to sit the examination. Lynda's success was a good achievement in view of the fact that she does not own a pony and is a "home grown product" of the Rheindahlen Saddle Club.

We would need the whole page to list the excellent results in competition during this second half of the season so instead we show a summary below:

- 14 First Prizes
- 10 Second Prizes
- 13 Third Prizes

To close this section on competitions, and to illustrate the high standard achieved by our younger riders, they gained 1st or 2nd placings in eight out of twelve events at the Pony Club Gymkana held at Dortmund in September. For these successes we congratulate our club instructors for their time and patience, and

the children for their determination, competitiveness and enthusiasm when representing the club. At very event in which we took part the horses, and riders, were immaculately turned out and brought great credit to the club.

INSTRUCTION

In September we started the new season of classes which will continue, except for short breaks at holiday periods, until July next year. Our 6 instructors, all volunteers, provide 13 classes weekly during which about 80 students are given instruction, ranging from the beginner to the advanced stage.

Rides in the surrounding countryside are arranged regularly at weekends in order to give the students, and horses, a change from the weekday routine in the "school". These are intended for those riders not yet considered sufficiently competent to take a horse out on their own, and are always accompanied by qualified "lead riders". Qualified riders, of course, are able to book horses whenever they wish to ride out alone.

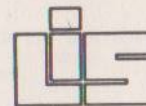
GENERAL

The indoor school is now looking much more professional. Boarding of the sides has been completed and a new floor of peat and wood shavings laid. The fencing around the paddocks has recently been completed and is in very good order. A start has been made with the building of cross-country jumps in the paddocks, and this will continue during the winter.

If you are interested in riding, come and visit the stables any day from 1000-1200 or 1400-1730 hrs. If you are interested in gardening there is always a plentiful supply of manure available at a nominal charge.

INFLATION

HAS ERODED YOUR FAMILY PROTECTION YEARLY. IF YOU HAVE NOT REVIEWED YOUR LIFE ASSURANCE WITHIN THE PAST THREE YEARS YOU ARE ALMOST CERTAINLY UNDER INSURED



Peter Fisher

OF (LYNN INSURANCE SERVICES)

COLTISHALL HALL, NORWICH MEMBERS OF THE ASSOCIATION OF INSURANCE BROKERS IS AVAILABLE FOR ADVICE ON ALL ASPECTS OF LIFE ASSURANCE, UNIT TRUSTS, LUMP SUM INVESTMENTS, BUILDING SOCIETIES, HOUSE PURCHASE ETC.

FOR AN INFORMAL CHAT CONTACT:

ERKELENZ (02431) 4680
5144 WEGBERG
RATH-ANHOVEN
HAUPTSTRASSE 128

OR SEND COUPON:

T.R.B.

NAME

ADDRESS EXT.

CINEMA PROGRAMME

Performances at 1930 hrs unless otherwise stated

| ASTRA | | |
|------------|--|----|
| 1 | The Coptor Kids (Matinee) | U |
| 1 | Juggernaut | A |
| 1 | Dead Cert | X |
| 2 | Superdad | U |
| 3 | Capone | X |
| | Blindman | X |
| 4 | French Connection No. 2 | X |
| | Hex | X |
| 5, 6 | Vigilante Force | X |
| | Devil within her | X |
| 7 | * SKC Bingo, Doors open 1930 hrs. Eyes down 2030 hrs | |
| 8 | The Wind and the Lion | A |
| 9 | Dr Zhivago | A |
| 10 | Young Frankenstein | AA |
| 11, 12, 13 | Drum | X |
| | Bootleggers | A |
| 14 | * SKC Bingo, Doors open 1930 hrs. Eyes down 2030 hrs | |
| 15 | Columbia Cartoon Programme No. 2 (Matinee) | U |
| 15 | Inside Out | A |
| | Doc Savage | A |
| 16, 17 | The Likely Lads | A |
| | Win, Place or Steal | A |
| 18 | Lepke | X |
| | Scarecrow | X |
| 19, 20 | Death Race 2000 | X |
| | Tower of Evil | X |
| 21 | * SKC Bingo, Doors open 1930 hrs. Eyes down 2030 hrs | |
| 22 | The Land that Time Forgot | U |
| 23, 24, 25 | Jungle Book | U |
| | Return of the Big Cat | U |
| 26, 27 | The Missouri Breaks | AA |
| 28 | * SKC Bingo, Doors open 1930 hrs. Eyes down 2030 hrs | |
| 29 | Silly Billies (Matinee) | U |
| 29 | Bite the Bullet | A |
| 30, 31 | Aces High | A |
| | * Minimum Snowball DM 1,500 | |
| GLOBE | | |
| 1 | The 25th Hour | A |
| 2 | Man with the Golden Gun | A |
| 2, 3, 4 | The Outlaw Josey Wales | AA |
| 5 | Confessions of a Pop Performer | A |
| | California Split | X |
| 6, 7, 8 | Moses | A |
| 8 | Goliath and the Dragon (Matinee) | U |
| 9 | Hercules against Kung Fu at 14.30 hrs | A |
| 9, 10 | Truck Stop Women | X |
| | Way of the Godfather | X |
| 11 | The Mean Machine | X |
| 12 | Julia | X |
| 13 | Open Season | X |
| | Brotherhood of Satan | X |
| 14, 15, 16 | One of our Dinosaurs is missing | U |
| 17 | Massacre in Rome | AA |
| | Fugitive Girls | AA |
| 18 | Freebie and the Bean | X |
| 19 | Operation Crossbow | A |
| | Evel Knievel | A |
| 20 | Reincarnation of Peter Proud | X |
| 21, 22 | Sky Riders | A |
| | Peeper | A |
| 22 | That Darn Cat (Matinee) | U |
| 23 | Man about the House (at 1400 hrs) | A |
| 23, 24 | Anti Christ | X |
| | Vault of Horror | X |
| 25 | The Bridge at Remagen | X |
| | Three | AA |
| 26 | Night Caller | A |
| | The Mutation | AA |
| 27 | The Gambler | X |
| | Violent City | X |
| 28, 29 | Girls, Girls, Girls | U |
| | Paradise-Hawaiian Style | U |
| 30 | Nearest and Dearest | U |
| 30, 31 | House of Mortal Sin | A |
| | Deadly Trap | X |

SMALL ADS (DM 5 for 50 words)

GUIDE SHOP, (DM 5 for 50 words) Grenville Road, Rheindahlen Garrison. The position of Shop Manager will become vacant on 1st March 1977. The opening hours are Tuesday 09:30 - 10:30; Wednesday 15:30 - 17:30 and Thursday 09:30 - 11:30. There is also an extensive mail-order business. Working hours amount to 16-20 hours a week. Remuneration is by commission on sales. Prospective applicants will be required to operate a simple system of accounts and prepare the books for audit twice a year. Please apply in writing to Commissioner B.G.I.G., c/o HQ BAOR (Q Qtg) BFPO 40.

TEACHER OF MATHEMATICS Queen's School, Rheindahlen, requires a suitably qualified teacher of Mathematics from Half Term (23rd February). Teaching is mainly in Lower School (age 11 to 13) and a knowledge of Modern Mathematics would be a distinct advantage. Please contact the Headmaster on RA 2412 in the first instance.

AU PAIR GIRL REQUIRED - Düsseldorf Area. Reliable (minimum age 17) who would like to live with a German family with a daughter aged nine, to perfect her German and help with light housework. Afternoons, evenings and week-ends free, board and lodging, attractive pocket-money and good opportunity to learn German. For more details, 'phone 02159/6134 or write to Mrs Christian Bumm, Gustav van Beek Allee 30, 4005 Meerbusch 1 - Strümp.

FOR A RELAXING HOLIDAY
Hotel Gemütlichkeit - Bavaria (Near Fussen) 8959 Buching-Berhof, Moorbadstr. 21 - Tel. 08368/215 or RA 2684.
Within sight of Austrian Alps. Lakes, quiet surroundings, winter sports. Good cuisine. English spoken.

IBIZA, Spain. For your holiday in the sun.
Superb penthouse apartment on the Mediterranean. English manager to look after you. Golf, water ski-ing, sailing and riding nearby. Price for two weeks holiday, including jet flight from Düsseldorf, rent, maid service and food parcel from DM 400 per person. Ibiza Apartments, c/o 7 Regt RCT BFPO 16.

THE WESTBOURNE HOTEL 3 THE PARAGON RAMSGATE KENT
TELE: THANET 53118
Offer extremely cheap hotel accommodation to families of Her Majesty's Forces. If you are returning to the UK and require somewhere to live temporarily we are your answer. Happy family atmosphere.

SILVER SALES
English silver by renowned London Silversmith up to 30% under retail prices. Ring RA 2414.

CAROLYN MOELWYN-HUGHES BALLET SCHOOL
Spring term commences on Tuesday 4th January. For further information please contact: -
Mrs Moelwyn-Hughes 4 Somerset Close MG Civ. 559203

YOGA CLUB - WINTER CLASSES
Yoga classes for the Winter 1977 term commence on Tuesday 18th January. Interested people should contact Mrs Gregory, 15 Carlisle Way or ring RA 2820.

POSTED?

interpatch moves your kit to and from Germany.

- any amount - a box to a vanload!
- anywhere - Caithness to Cornwall!
- storage, if you need it.

Careful, cheap, easy moves every week.

Contact: Interpatch Ltd. Fairfield Road, Downham Market, Norfolk or phone Downham Market (03663) 2939 anytime.

STOP PRESS

BULK REFUSE COLLECTION Bulk Rubbish is collected from MQs as follows:

1st & 3rd Wed each month

All MQs situated to the North East of Gloucester Drive.

2nd & 4th Wed each month

All MQs situated to the South West of Gloucester Drive.

Occupants of MQs should be aware that on those occasions when there are FIVE Wednesdays in a month, NO, repeat NO, bulk rubbish is collected on the fifth Wednesday. Notification will be given in GROs, SROs and the Rheindahlen Bulletin when, because of National Holidays etc, alternative arrangements have to be made.

QUEEN'S SCHOOL ADMISSIONS Recently arrived personnel living within Queen's Upper and Lower School catchment area with children (born 31 August 1965 or before) due to be admitted for the first time in January 1977, should telephone the Secretary on RA 2412 between 0900-1500 hrs on the first day of the Spring Term, Tuesday, 4th January, for an Admission appointment.

ARMY THRIFT SHOP will re-open on January 11th for the Spring term. Usual opening hours: 9:30-11:30 and 2:30-4:30 p.m. on Tuesday to Friday. Special Opening for Take-in and Sale on January 4th, a.m. only. Please come along and aid the charities we support. Newcomers to Rheindahlen will find the Army Thrift Shop next door to the YWCA Book Shop Annex opposite NAAFI JHQ.

RAF THRIFT SHOP There will be a Winter Sale in the Shop on Thursday, 6th Jan, Friday 7th Jan and Saturday, 8th Jan. We hope that you will come along to search for a bargain and help us in our efforts to raise money for the many deserving charities which we support each year. For those of you who are new to the area, the RAF Thrift Shop is situated next door to the Malcolm Club Shop in Trenchard Rd. We will open for normal business as follows: Opening Day and First Taking-In Day on Thursday, 13th Jan. First Paying-Out Day on Friday, 14th Jan. Helpers Taking-In Day on Wednesday, 12th Jan.

RHEINDAHLEN JOINT SERVICES NAAFI CUSTOMER RELATIONS COMMITTEE The next meeting is scheduled for 18th January. Although the Agenda has been finalised, it is still possible to include points under 'Any Other Business'. Such points should be communicated to Committee Members as soon as possible. A list of their names will be found in both NAAFI shops.

CIV SEC & D A C LADIES CLUB On Monday, 10th January, at 8:30 p.m. Mrs Hazel McClelland will be giving us a demonstration of breadmaking at No. 2 Civilian Mess. The Coffee Morning is on Wednesday 19th January at 2 Stafford Way from 10:30 a.m. - 12 noon. All friends welcome. PLEASE NOTE all future monthly meetings will be held in No. 2 Civilian Mess.

PSA WIVES CLUB 10:15 a.m. Coffee morning at the Church Centre. Any new members will be most welcome. The Chairman and Committee would like to wish all members a Very Happy and Prosperous New Year.

ALLIED OFFICERS' WIVES CLUB The next meeting is on Thursday, 27th January at 2:15 p.m. in the Rheindahlen Rooms, and will be an "International China Tea" with displays and a sale table. Membership is open to all wives of Officers of the Armed Services of ANY of the nations stationed at, or associated with, the Joint H.Q., and-to wives of Civilians of a similar status.

RAF OFFICERS' WIVES COFFEE MORNING The next Coffee Morning at the RAF Officers Mess will be held on Thursday, 27th January 1977, at 10:30 a.m. We would like to emphasise that wives of all members, including civilians and NATO Air Force Officers, are cordially invited. We hope many of you will find the time to come along. A creche will be available.

RHEINDAHLEN FLOWER CLUB The Annual General Meeting of the Rheindahlen Flower Club will take place on Thursday, 20th January, in the Ballroom of the Marlborough Club. The meeting will open at 2:15 but the usual facilities will be available from 1:30. These include coffee, creche, and silver, china and mechanics tables.

GUILD OF ST HELEN meets on the first Tuesday of each month in the Club Centre, opposite the B.P. Garage, at 10:15 a.m. All ladies of all denominations are welcome, of all Services and Civilian attached personnel. There are interesting talks and discussions in a very friendly atmosphere.

RHEINDAHLEN LADIES BRIDGE CLUB is open to all Officers' wives and meets every Wednesday at 1345 hrs in the Ladies Room at the RAF Officers Mess. New members most welcome. Do come along and join us. If any queries, contact Mrs Margaret King, 8 Dolgelly Way, RA 4134, or Mrs Midge Jones, Ext 4504, or Mrs Cathy Metcalf, 9 Portadown Way.

RHEINDAHLEN BRIDGE CLUB Meets for Duplicate evenings every Tuesday at 1930 hrs at the Blue Pool. For further details, contact the Secretary, Yvette Thierry on MG MIL 247.

ANGLO-GERMAN CLUB MEETING The next Main Meeting will be on Thursday, 20th January, in the Volkshochschule, Bismarckstrasse, Mönchengladbach, at 2000 hrs. For further details, contact Sqn Ldr E P VIVASH on RA 4063.

LADIES SQUASH We meet every Wed and Fri at the IOC Courts at 9:30 a.m. Everybody welcome including beginners. For more information, contact the "Captain" Yvette Thierry on MG MIL 247.

CHIROPODY TREATMENT is available to all members of the Combined Services and Civilians every Wednesday at RAF Station Medical Centre, H.Q. (Unit). Please ring 4262 for appointments.

RHEINDAHLEN BULLETIN If this should fail to arrive, you can always collect your copy from W.O. Hansen at RAF Station H.Q. (Queen's Avenue).

SCOTTISH COUNTRY DANCING The Rheindahlen Reel Club meets every Thursday in St David's School at 8 p.m. There is instruction for beginners and advanced dancers, and now we have plenty of room for everyone.

CAN YOU READ THIS? If someone has to read it for you or if you know of anyone who would like to learn how to read, ring 2273.

BLOOD DONATIONS TO GERMAN RED CROSS The German Red Cross have requested permission to send a team to Rheindahlen during February. In order to make this visit worthwhile, a minimum of 50 donors per session are needed. Any persons (military/civilian/dependant) wishing to volunteer as a donor should notify HQ Rheindahlen Garrison (RA 2787) stating name, sex, age and unit.

KEEP FIT with Sue Barry. Classes re-start on Jan 11th. Tues: 7.30 - 8.30 St Patricks School, Wed: 10.00-11.00 RAF Gym, Thurs: 7.30-8.30 St. Christopher's School.

RAF RHEINDAHLEN WIVES CLUB Jan 10th (also Annual General Meeting) and 24th. Usual bus arrangements.

The Rheindahlen Bulletin require a replacement for our RAF Co-Editor in the near future - (a vacancy already exists for a Civilian one). If you would like an interesting, worthwhile but unpaid job, then please contact Mrs. Lorna Fall at 11 Stornoway Walk, SW Extension, or Mrs. Vivien Sims (Ext 2195) for full details. A telephone is an advantage, but not essential. What you DO need is spare-time up to about 14 days a month and an interest in what goes on at Rheindahlen. The job will bring you into contact with a variety of people and organisations and will give you the satisfaction of producing a magazine which our readers assure us is much appreciated by the community.

ALCOHOLICS ANONYMOUS RA 2202

| Tyre Sizes | first quality Steel | Michelin Steel | first quality Textil | Remoulds |
|--------------------|---------------------|----------------|----------------------|----------|
| 145 SR 10 SL | 47,50 | 53,- ZX | 46,- | 32,- |
| 155 SR 12 SL | 48,- | 67,- ZX | 55,- | 35,- |
| 135 SR 13 | 35,50 | 43,50 ZX | 36,- | 28,- |
| 145 SR 13 | 46,- | 56,- ZX | 50,50 | 34,- |
| 155 SR 13 | 58,- | 66,- ZX | 58,- | 37,- |
| 155 SR 13 SL | 48,- | 71,50 ZX | 56,- | 37,- |
| 165 SR 13 | 65,- | 74,- ZX | 65,- | 43,50 |
| 165 SR 13 SL | 59,- | 80,50 ZX | 60,50 | 42,- |
| 175 SR 13 | 72,- | 82,- ZX | 72,- | 49,- |
| 175 SR 13 SL | 76,- | 91,- ZX | 70,50 | 49,- |
| 185/70 SR 13 SL | 74,- | 90,50 ZX | 77,- | 53,- |
| 6.40/700 SR 13 | 77,50 | 88,50 ZX | 77,50 | 50,- |
| 6.40/700 SR 13 SL | 75,- | 96,- ZX | 74,- | 48,- |
| 145 SR 14 | 49,- | 59,50 ZX | 54,- | 36,50 |
| 155 SR 14 | 62,- | 70,50 ZX | 62,- | 40,50 |
| 165 SR 14 | 69,50 | 79,- ZX | 69,50 | 46,- |
| 165 SR 14 SL | 69,50 | 86,- ZX | 67,- | 46,- |
| 175 SR 14 SL | 70,- | 98,- ZX | 63,- | 55,- |
| 175 HR 14 | 100,50 | 111,- XAS | 100,50 | 59,50 |
| 185 SR 14 SL reinf | 107,- | 110,- ZX | 107,- | 65,- |
| 185 HR 14 SL | 124,- | 157,- XVS | 124,- | 65,- |
| 125 SR 15 | 38,- | 43,50 X | 38,- | 38,- |
| 125 SR 15 SL | 42,- | 48,- X | 42,- | 42,- |
| 155 SR 15 SL | 63,- | 79,50 ZX | 60,50 | 42,- |
| 165 SR 15 | 71,50 | 81,50 ZX | 71,50 | 48,- |
| 165 SR 15 SL | 69,- | 88,50 ZX | 69,50 | 48,- |
| 180 HR 15 | 96,50 | 110,- XAS | 96,50 | 59,- |
| 185 HR 15 | 128,- | 128,- XAS | 128,- | 65,- |

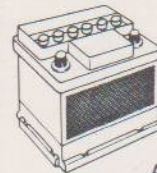
| Tyre Sizes | Cross Ply | Remoulds |
|------------------|-----------|----------|
| 5.50 - 12 SL | 35,50 | 26,- |
| 6.00 - 12 SL 4PR | 40,- | 30,- |
| 5.60 - 13 SL | 36,- | 27,- |
| 5.90 - 13 SL | 44,50 | 30,- |
| 6.15/155 - 13 SL | 42,50 | 33,- |
| 6.40 - 13 SL 4PR | 48,- | 36,- |
| 7.00 - 13 SL | 96,- | 45,- |
| 7.00 - 14 SL 8PR | 74,- | 45,- |
| 5.60 - 15 SL | 34,- | 28,- |
| 6.00 - 15 SL 4PR | 43,50 | 32,- |

The prices shown above are those after the subtraction of VAT, which you are exempt by using our special order form and paying through your Officers' Mess, Sgts Mess or PSI Shop.



Gummi VEST

The leading tyre dealer in your area. Over 5.000 tyres always in stock. English speaking staff. Licensed dealer for all makes of tyre. Specialist dealer for Michelin.



and here our new service!

BATTERIES

for every car and every budget

As an example:

VW 12 V 36 AH complete only DM 73,20

You can buy the same way as buying tyres (without VAT.) by the simple GUMMI VEST system through your Mess, PSI or PRI.

Another new offer

BRAKE-PADS

FOR GERMAN CARS

You pay for the material only – fitting is free.

Balancing at extra charge.

Ask for these service by Gummi Vest.

and here you can find us:



ELMPT
An der Beek 255
Tel. 02163 / 7153

Mönchengladbach
Hardterbroicherstr. 44
Tel. 02161 / 41100

