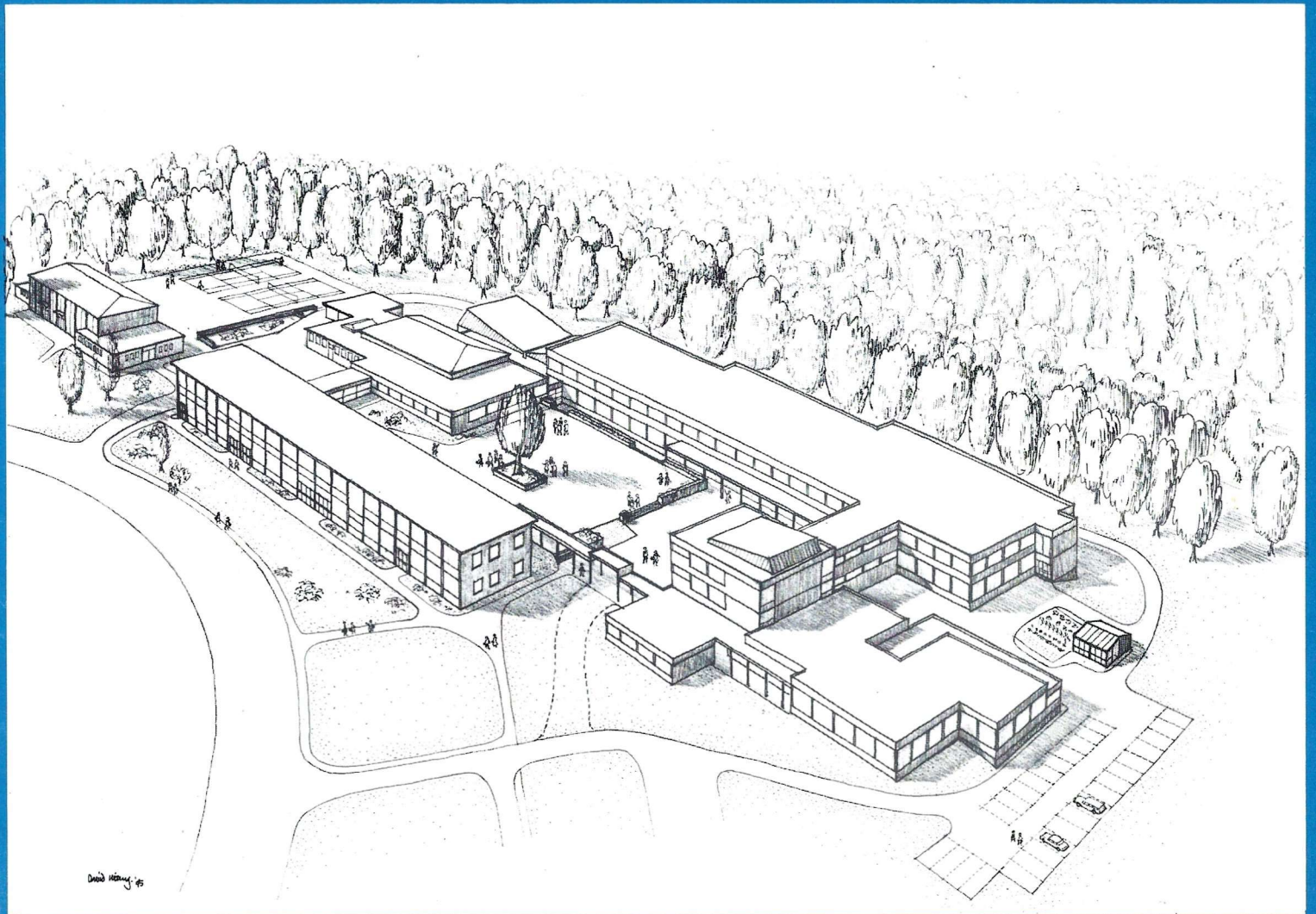


# The Rheindahlen Bulletin



NO. 63

SEPTEMBER 1975

# Speise- Restaurant



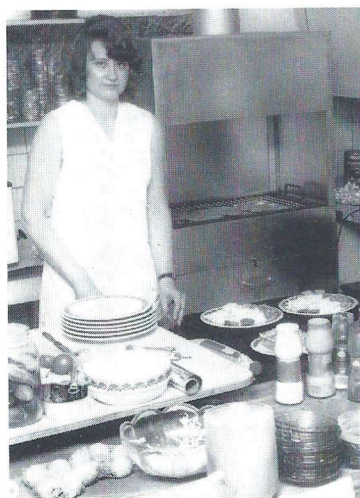
# "Onkel Gustav"



5 minutes from JHQ — Under the Management of Waltraud and Dirk Siegers — Closed on Thursdays



All efforts will be made by our staff to give you some enjoyable hours on our premises. The band will entertain you on Saturdays. The hostess, Frau Siegers, is keeping a good table.



Party rooms for all types of functions at no extra charge. No VAT if arranged through messes. Our private band can be hired.

---

**PLEASE NOTE:** With effect from 1 Sep 75 our kitchen service will be at your disposal from 17.00 to 01.00 hrs. During the WINTERSEASON we offer you a variety of specialities from the CHARCOAL GRILL at prices ranging from DM 6.00 to 12.00. For the special occasion we recommend Onkel Gustav's Grill-Plate for 2 or 4 persons. \*FW



Rhinos celebrate the return of the season.

DESMOND LEACH

## Editorial

Springtime is generally considered the years' re-awakening, the start of a new season, but for many people there is a satisfaction, too, when the nights begin to draw in, we close our curtains earlier and realise that the golden days of summer are over for another year.

We must pack up the patio furniture and think of things to interest us indoors.

For the children a new term brings that rather exciting 'lets start again' feeling. Whatever went on last term, what successes were gained or what-ever 'black books' had names written down, a new term is always a new start. For the majority of children who enjoy school, and the countless activities that go on there, it is the time to start off on that academic steeple-chase once more.

The pupils and the staff at Queens School here at Rheindahlen will find that their term will also bring a new start, but not

just an academic one. Their school is being knocked about a bit, but all in a very good cause, as you will see from report by the Project Architect, Mr. D. Utting, who also prepared the artists Impression of the new school which appears on the cover this month. The Rheindahlen Bulletin is very pleased to be able to produce this exclusive picture of what the new Queens School will look like when it is finished in 1976.

Perhaps it will make the mess and inconvenience which inevitably accompanies a building in embryo more bearable. We have a glimpse of the end product and are able to visualise how splendid it will look when the dust has finally settled.

But it isn't only the children who have the opportunity to start something new at this time of the year. There are courses organised by the Army and the RAF Education Branches which cover the widest variety of interests to occupy us during those long winter evenings, and the theatre societies are sorting out their props and their new productions for our entertainment during the Rheindahlen 'season'. They are always ready to welcome new members who would like to join them.

So don't feel that the long hot summer has faded away and left us with a wet and windy winter to come.

Why not Do something Different this year — you never know, you might like it!

### FINAL DEMAND

No, it's not the rates or the gas bill.

Did you take a holiday picture? You did? And it was a masterpiece? Then send it in as entry to our Holiday Photographic Competition.

1st Prize	DM 50
2nd Prize	DM 30
3rd Prize	DM 20

Black and white, or coloured, photos will be judged for suitability for reproduction in the Bulletin, as well as for artistic merit and interesting content. No slides please. Entries must be in by October 1st. Results in November issue.

The Rheindahlen Bulletin, a monthly publication, is published jointly by the Commander Rheindahlen Garrison and the Station Commander R.A.F. Rheindahlen.

CO-EDITORS: Mrs. C. Brown (RA 4425)

Mrs. J. Friendship, Mrs. W. Humphries (RA 2588) \*FW

BUSINESS MANAGER: Squadron Leader J. W. Cleverley  
(Ext. 4748)

SERVICE ADVISORS TO THE EDITORS: Squadron Leader

F. P. Brown (Ext. 4746) — Major J. B. Lee (Ext. 2842)

B.F.E.S. REPRESENTATIVE MR. J. LOVEGROVE (Ext. 2195)

ADVERTISING MANAGER: Herr Koop (RA 4281)

PRINTER: Fritz Ecken, 4056 Schwalmtal 1

**ALL CONTRIBUTIONS TO THE MAGAZINE MUST BE RECEIVED BY THE 10th SEPTEMBER FOR THE OCTOBER EDITION.**

ADDRESS: Co-Editors, Rheindahlen Bulletin, H.Q. Rheindahlen Garrison, BFPO 40 and S.H.Q. RAF Rheindahlen, BFPO 40

The material in this magazine is copyright reserved and should not be reproduced without permission.

FRONT COVER: ARTISTS IMPRESSION OF QUEEN'S SCHOOL RHEINDAHLEN IN 1976.

# QUEEN'S SCHOOL RHEINDAHLEN

by D. A. W. Utting A.R.I.B.A. Project Architect

No doubt many pupils, parents (and teachers too) have been wondering just what is being built at Queen's School. Those teachers fortunate enough, or unfortunate enough, depending on one's view of things, living in the BFES Mess adjacent to the school will no doubt have seen and heard a great deal of what has gone on to date. The commencement of work every morning has, maybe, awoken many from their slumbers and the noise emanating from a building site can appear to go on and on with no apparent end.

However, now all, or nearly all, will be revealed. Queen's School has not only been overcrowded for sometime, but also very scattered with its teaching accommodation. The Lower School, appropriately, occupies one of the lower reaches of Rheindahlen, the craft centre is near the Globe Cinema, the sports fields are on the opposite side of the busy main road from the Army Transport Workshops and Upper School nestles behind a lot of trees and what was once part of the aforementioned road and between the Workshops and the PSA Rheindahlen Depot. Not a very satisfactory state of affairs for any large school, and involving a considerable amount of pupil movement during school hours.

The extension now under course of construction will, when completed, house the whole of Queen's in the one complex. Building work commenced in November 1973 with the clearing of the site north of the existing Upper School and the laying of the new access road that circumvents the site. This was completed in May 1974 but work was suspended on the new buildings at that time, and the road remained unfulfilled for just over a year. It became known locally as the best Go-Kart Track for miles around, although no-one can recall any Grand Prix held on it! Building work recommenced in June 1975 with the first Phase of the new extension. The extension is split into three interconnecting Phases, and this phasing is made necessary to accommodate the pupils and staff, as the existing buildings will be altered and modernised as the last Phase.

**Phase I** is the Technical Wing comprising Craft Workshops, Art and Technical Drawing Studios, Maths, Home Economics Department, Music Rooms and a Careers Advice Centre with Plant Rooms, Bulk Storage and a Cycle Store in the basement. As the site slopes from south west to north east the basement at the north east end beneath the Technical Wing is at ground level, thus making best use of the site contours and minimising excavation work.

The site did, in fact, present a problem in as much that the ground was mainly fine and medium sand with a natural water

level some 1.00 m below ground level and thus a minimum of excavation was essential. Even so, the excavations had to be taken out in sections, pumped dry and backfilled with coarse sand which was compacted before the foundations could be laid and the basement walls and floor constructed. The existing Biology Lab., had to be demolished as it covered ground needed for services, part of Phase I and the contractors plant and machinery. At the time of writing the foundations and basement are about 70% complete. They are formed in in-situ reinforced concrete and although the Bible stresses that ones foundations should never be built on sand, we are assured that nothing disastrous will occur from so doing!

**Phase II** will house the new kitchen, two Dining Halls, the sixth form unit and a Lecture Theatre plus the Remedial Unit and Ready Use Stationery Store. This phase is connected to Phase I by a two storey covered way which at first floor level, houses offices, toilets and Tutorial Rooms for the sixth form unit.

**Phase III** is split into three main parts, the new Assembly Hall fully fitted for theatre work and also usable for other functions, as the raked seating platforms provided are fully retractable beneath the lighting and sound control room. This Control Room can also be used for film projection. The existing Hall will be used for a multitude of purposes including "Theatre in the Round", as the stage is being removed thus freeing its whole area. Part two is the alterations and extension to the existing Admin Offices and staff accommodation plus a Staff Recourses Centre in the existing kitchen wing.

Part three is the alterations to the existing Teaching Block fronting the main road into General and Specialist Classrooms. The existing Gymnasium will remain as it is and the temporary stores and mobile homes removed. A new Sports Hall will be built at the north east end of the site (not shown on the sketch) on the opposite side of the access road and car park area. The extension, plus the Sports Hall, is scheduled for completion by December 1976, and the alterations to the existing Teaching Wing by December 1977. The whole extension is being built in a prefabricated reinforced concrete system clad with textured concrete panels by Heinrich Remmert Ingenieur bau KG of Neuss/Rhein whose tower crane has become somewhat of a landmark since building recommenced, and is a source of continual fascination (and distraction) to staff and pupils alike.

The cost of the project is DM 11.750.00 and it is hoped that, when complete, the buildings and facilities housed therein will provide a fitting environment for their inhabitants.

# Townsend Thoresen - The Forces Ferries

If you're in the Forces you should know about us.

We're offering reduced fares on some of the best routes for Forces travelling home to the UK.

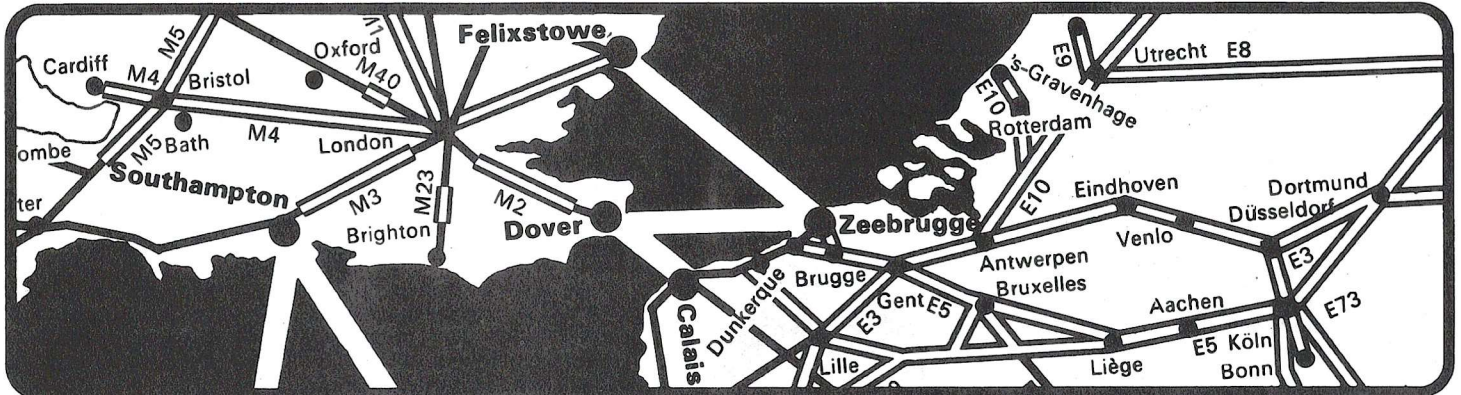
The new Zeebrugge-Felixstowe route points you to N. London, the Midlands and the North; the Zeebrugge-Dover route to the South and West.

The E3 and E5 Autobahns are the fastest connections from Germany to Zeebrugge and

Calais from where we run frequent day and night sailings.

What's more - our modern fleet of drive-on/drive-off ships guarantee you a comfortable journey.

Relax in the comfort of roomy lounges or with a drink in the bar, linger over a meal in the restaurant, or for light refreshments there's a handy snack bar. All ships have a fully stocked duty-free shop, for last minute shopping.



## Travel Bargains

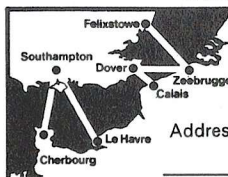
We quote special low cross-Channel passenger fares *all year round* for all British and Commonwealth Forces, attached civilians and their immediate dependants stationed on the mainland of Europe. And for 8 months of the year we'll take your cars, caravans, trailers and motorcycles at a big discount.

In addition, you'll find our special fares for short breaks in the UK unbeatable. For trips up to

5 days we'll take your car *absolutely free*. Inclusive price covers up to 4 adults (2 children over 4 and under 14 count as one adult).

And, if you have a day or two's leave it's worth remembering that we also have a special  $\frac{1}{2}$  price 36 hour return for you and your car regardless of the number of passengers, and low cost 36 hour and 60 hour return fares for passengers.

You'll find all you need to know about routes, times and prices in our leaflet 'Travel Bargains for Forces'. Send in the coupon for your copy or call at your local travel agency.



To: Townsend Thoresen Car Ferries, 4000 Düsseldorf 1, Oststrasse 80.  
Please send me your 'Travel Bargains for Forces' leaflet.

Name \_\_\_\_\_

Address \_\_\_\_\_



**TOWNSEND THORESEN**  
Car & Passenger Ferries

## Strictly for the birds:

Takes pleasure in reporting (as something of a scoop) the 'low down' on the Autumn Fashion scene. In the spring I was able to see the collections by courtesy of old friends. I returned from Paris full of bon homie, and hot foot for Rheindahlen to rejoice in the fact that everything, but everything is Chinois. A wonderful coincidence that most of us have at some time been in the East thus giving us a head start in the fashion stakes.

Don't send that quilted Coolie Jacket, with the Oriental froggings to the Thrift Shop. Better still search that very place for anything vaguely Chinese — because this is the trend!

Straight skirts reminiscent of the sexy flirty skirt with slits that were worn with great impact in the fifties, are very much to the fore are forecast to be worn all the time in the winter. (What a pity that I relegated mine to the dustbin — after a particularly frenetic Vicar and Tarts night). A boon for home dressmakers is the fact that tubular and very straight clothes will supercede the tent look. This must prove more economical when buying material.

I saw a lot of blue (in all shades of Air Force) again tailor made for us service type camp followers. Best of all is red — that exotic shade that one sees in the Far East and is often referred to as Chinese Laquer. Anyone who has owned a red garment will tell you what a versatile colour it is, almost up-dating anything, an immediate impact maker. A psychological morale booster on a dismal day when trudging to the NAAFI. A lot of cream colour was in evidence particularly for evening wear and in soft slinky jersey.

I saw a very clever idea of lengthening a skirt, although I'm sure this was never the intention of the designer. Chaneles successor is still churning out those lovely knobby tweed suits, and had a super one with matching silk blouse (bow tied).

A large piece of the same material made the waist-band. This idea would lend itself to lengthening any too short skirt and would cost little to renovate, bringing it bang into fashion.

Long dresses were much in evidence for day-time, although the kiss of death on the busy Metro.

For the baby birds where but in Paris would one find deep purple dungarees in pure silk, with the largest, greenest apple applied on the bib front. Hair is mainly worn short or very long, no inbetween length, and the style is reminiscent of "Gatsby". There is another style known as Firefly — the hairdresser achieves this look by combing the hair all over one's head and allowing it to fall into its natural line and then cutting it in this shape. It is very soft and looks completely uncontrived.

If you have returned from your holiday to a feeling of anti-climax and your spirits have plummeted when you find the house-keeping money does not stretch as far as it used to, then join the club! Search the hedgerows and your garden and hey presto you have a bonanza of food for free. Even a type of "champagne" can be made from the recipe below and that's a sure-fire fillip!

### Elderflower Champagne (An Ideal Pick me up)

#### Ingredients:

2 Tablesp white wine vinegar	1 gallon cold water
1 1/2 lb sugar	2 lemons
	4 heads of elderflower

Method: Put ingredients except lemons into a large bowl; squeeze lemons and quarter them add to other ingredients. Stand for 24 hours stirring occasionally. Strain and bottle into screw top bottles (the orange saft ones are ideal). The "Champagne" will be ready for drinking in a few days! Cheers!

If you are feeling better already. Then try this blackberry recibe.

### Bramble Jelly (Black Bounty)

4 lb Blackberries	1/2-3/4 pt water
1/2 = 1 tsp tataric acid	sugar
or 2-3 Tbsps lemon jce	

Wash berries and pick them over. Put them with the tartaric acid and water in preserving pan, bring to boil and cook slowly for about 1 hour. Strain through a jelly cloth. Measure the liquid and allow 1 lb sugar to 1 pt. Put in a pan, add sugar stir until dissolved and bring to the boil. Allow to boil briskly for about 10 minutes then test for setting. As soon as it jells pot and cover immediately.

Even those crab apples that litter the ground can be pressed into food value.

### Blackberry and Apple Jelly

2 lb Blackberries	1 pt water
2 lb crab apples	sugar

Wash the berries, wash and cut up apples without peeling or coring. Put the fruit in a pan with 1 lb sugar to each pint. Bring to boil. Boil rapidly until it jells when tested. Pot and cover.

### Mint Jelly

Syrup	1 1/2 dessertsp powdered gelatine
8 ozs sugar	2-3 Tablesp mint chopped
1/2 pt water	1/4 pt vinegar

Make a syrup of sugar and water, by boiling together. Add vinegar and the powdered gelatine. Stir in chopped mint. Pour into jars. Seal down most thoroughly. Store in a cool place.

I'm sure that some kind friend or neighbour has made you the recipient of a few green tomatoes try.

### Green Tomato Chutney

2 lbs green tomatoes (skinned)
8 ozs onions grated or finely chopped
8 ozs sugar
1/2 pt vinegar
8 ozs apple (after peeling and coring)
1/2 tsp salt
1 tsp pickling spice

Put onion into saucepan with 1/2 pt vinegar, simmer until nearly soft. Chop the apples and the chopped tomatoe spices (in a muslin bag) and salt and just enough vinegar to stop mixture from burning. Cook gently until tomatoes apples are soft, stirring from time to time. Add remainder of vinegar and stir in sugar. Boil slowly until chutney is thick. Remove spices, pour into hot jars and seal.

Still feeling depressed. OR even tired after the back breaking job of collecting fruit? Try the poor girls sauna bath — it really works! Pour boiling water on some pine cones (and they are abundant in our Sylvan Setting) when luke warm bathe the joints with it. Do remember to remove the cones!

Wyn Humphries

# OPTIK-HILGER

Mönchengladbach

Hindenburgstraße 236 - Tel.: 02161 / 16982

easy to find Main Shopping Street near Railway Station

always up to date  
Latest in Contact-Lenses

The Bausch and Lomb Soft Contact-lens the only one  
which passed the American Health Dept. F.D.A.  
new Price 441,40 DM without Mehrwertsteuer.

Latest in lenses  
ZEISS Umbramatic Bifocal or Multifocal

Also in stock

Binoculars  
and Barometers with and without clock

and always up to date latest fashioned Style of  
Spectacle frames from the Top Firms in the world.  
You do not need to pay Mehrwertsteuer if you buy through  
your Mess or PSI

"THE CAR FOR OUR TIMES"

INFORMATION  
TAX-FREE PRICES



AFTER-SALES  
SERVICE

## SPECIAL NATO DISCOUNTS

FULL RANGE OF CARS ON DISPLAY  
AT OUR LOCAL SHOW ROOMS  
BUY ECONOMY (28 MPG) –  
RELIABILITY 6 YEAR RUST GUARANTEE.  
LARGE FULLY EQUIPPED WORKSHOPS.  
WE SERVE THE FORCES THROUGHOUT BAOR.  
"WE CARE"

contact Norman Banthorpe

## BMW NATO SALES

405 MÖNCHENGLADBACH-HARDT  
Hardterwaldstraße 200 · Tel. (02161) 50218 / 50318  
24 HOUR ANSWERING SERVICE

## POLICIES AND GREEN CARDS

FROM

## ELLEN CULPECK

CAMBRIDGE DRIVE (ADJOINING FIGARO'S)  
SOUTH WEST EXTENSION

Opening hours: Monday to Friday 9.30 – 17.30 hrs  
Saturday 9.30 – 12.30 hrs

Tel.: M.G. 59655

ELLEN CULPECK – FORCES INSURANCE BROKERS

CAR - CARAVAN - TRAILER - MOTOR CYCLE - MOPED  
BAGGAGE - HOLIDAY SICKNESS - TOURING - HOUSE-  
HOLD-HUNTING - LIABILITY INSURANCE

# FORTHCOMING ATTRACTIONS

## EVENINGS WITH ARIEL

The Ariel Theatre Guild is presenting a quartet of one act plays in a light hearted vein in the Little Hut Theatre at 8 p.m. on 24th, 25th, 26th and Saturday 27th September. Written by Robert Anderson, and collectively called "You Know I can't Hear You When The Water's Running", they present four different, and amusing, aspects of the same theme.

Tickets at DM 2 (DM 1.50 for block bookings of 10 or more) may be bought in the Main NAAFI Foyer between 9 and 1230 on the morning of Saturday 20th September, and at the Garrison Theatre Booking Office (Ext 2262) between 4 and 5.30 p.m. on Monday 22nd and Tuesday 23rd September.

## THE WEST RHINE MUSICAL SOCIETY

The Society's next production will take place on Friday 19th and Saturday 20th September and will be a Gilbert and Sullivan Evening. One half will consist of "West Rhine Gems from G&S", the other will be a performance of Trial by Jury. The box office will be open from Monday 15th September in the Garrison Theatre, between 1.30 p.m. to 5.30 p.m.

## A DATE FOR YOUR DIARY

The Band of the Royal Air Force (Germany) under the direction of Squadron Leader E. BANKS will be giving a concert on October 30th. The proceeds from the evenings entertainment are to be donated to SAAFA. Further details and box office times will be in the October issue of the R. B.

## THE 'FLOWER FEST' AT RHEYDT

This pretty parade of flower-decorated floats will take place on Sunday Sept. 14th. It starts at 2 p.m. and proceeds on a 10 mile route through the streets of Rheydt.

### INTERNATIONAL OFFICERS CLUB (IOC) PREMISES

Did you know that if ANYONE wishes to ORGANISE A SOCIAL OCCASION the IOC PREMISES ARE AVAILABLE for hire in whole or part. The portion hired will attract a Maintenance Charge costed at DM 0.50 per square metre, covering rental, fuel and light, building maintenance and fire insurance. Additional charges will be raised for: -

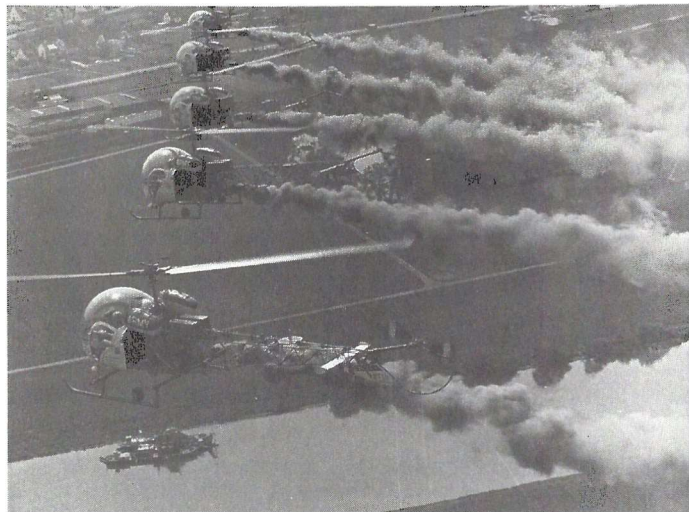
- a. Cleaning, although an organiser may arrange this privately.
- b. The kitchen if used, at a charge of DM 125.

The rates for hire compare MOST FAVOURABLY with those for similar facilities available on the economy.

NAAFI are prepared to tender for all events. Further information can be obtained from HQ Rheindahlen Garrison RA 2786 or 2787.

## THE BLUE EAGLES

With seven highly successful seasons behind them the Army Helicopter Display Team, or 'The BLUE EAGLES' as they are known to the public, are embarking on their eighth year of operation.



On the 18th of September they will appear at Kent School at 14.00 hrs. and Queens School at 15.15. Later that evening, a third show can be seen on the Army Sports Ground No. 1. starting with a static display of the machines at 17.30 hrs. The flying display will start at 18.00 and last for about thirty minutes.

The team will demonstrate the versatility of the helicopter by displaying a succession of synchronised, high and low speed manoeuvres and the extremely high level of skills and team work which are attained by the Army Pilot.

Captain Charles Hyde-Smith, Army Air Corps, is the team leader again this season. AQMS Hardy is the team's artificer. It is his responsibility to supervise the preparation of the six aircraft and to plan and manage the extensive servicing schedule to ensure that there are always five, occasionally six, aircraft 'on the line' for every show.

The five display pilots are Officers and Non Commissioned Officers drawn from operational Army Air Corps Squadrons on a volunteer basis; They arrive at Middle Wallop in the early spring and spend four to six weeks learning the art of helicopter formation, flying as this is not included in the Army's flying training syllabus.

The team flies Sioux light observation helicopters which, with the exception of electrically operated smoke attachment, are standard in every respect and the same as those flown by the Army Air Corps Squadrons throughout the world. The Sioux helicopter, although smooth to fly, is still relatively difficult to operate in formation due to the extreme turbulence created when machines are flying close together in confined areas. The pre-season training which the team undertakes between February and April tries to overcome these difficulties with the ultimate aim of producing a spectacular show with split second timing and immaculate formation flying.



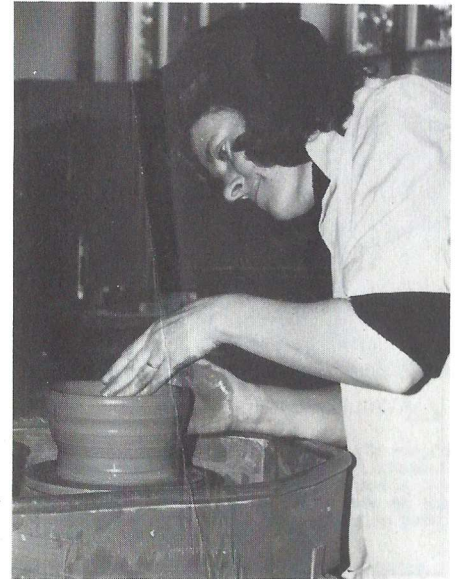


J. P. M. O'DONNELL

## Do something different!

Once again there is a wide range of classes and activities available and a complete Programme of the classes is being distributed to all Units and Married Quarters in the Garrison. Additional copies of this programme and further details on the classes are available from Cambridge House or the RAF Education Centre.

Service Personnel may enrol from 1-8 September during working hours by visiting or telephoning the appropriate education centre (Cambridge House - RA 2066 or RAF Education Centre - RA 4586/4748. After that date Service Personnel, UKBC, and dependants must enrol for all courses (either Army or RAF) by a visit



J. P. M. O'DONNELL

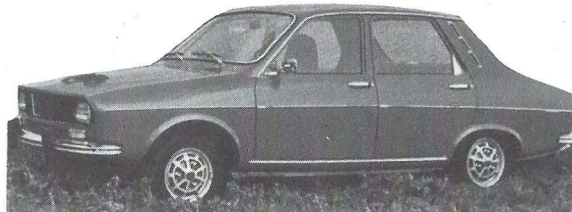
to Cambridge House. The enrolment periods will be on 10 and 11 September at 1000-1200 hrs, 1430-1200 hrs and 1830-1930 hrs. A fee of DM 8.25 is payable on enrolment. Should be paid in cash - but crossed cheques are acceptable. For Army courses they should be made payable to "Rheindahlen Garrison Pay Office" and for RAF courses to "RAF Rheindahlen Public Account". No fees are payable by Service personnel or by students under the age of 18 years. However, students under the age of 18 years if they are attending school are required to produce written permission from the school to attend classes at a Service education centre.

We recommend that you get hold of a programme and study it carefully. There must be something that appeals to you. If so, the staff of Cambridge House and the RAF Education Centre are waiting either to give you further details or enrol you for the class.

**ECONOMY**



**UP TO 45 MPG**



**BIG CAR COMFORT**



**FULL 5 SEATER**

# RENAULT 12 TS

## Renault Export Sales

**ISSELS KG**

405 Mönchengladbach 1 · Rheydter Straße 225 · Telefon 02161-13045



AUSTIN - MORRIS - ROVER - JAGUAR

**LOOK NO FURTHER THAN  
THE SHOPPING CENTRE IN JHQ**

WE HAVE BEEN ESTABLISHED IN THE JHQ FOR OVER 10 YEARS AND BOAST A BLMC TRAINED STAFF IN OUR OWN WORKSHOP ONLY 5 MINUTES FROM THE JHQ WHERE ENGLISH IS SPOKEN. CAR FINANCE AND INSURANCE ON THE SPOT AT COMPETITIVE RATES - ALSO A SELECTION OF GOOD USED VEHICLES IS NORMALLY AVAILABLE.

**W. KREMER AUTOMOBILE**

JHQ SHOPPING CENTRE

TEL: MÖNCHENGLADBACH 59326

## CRIME PREVENTION

Numerous incidents were dealt with by the police during the past year involving thefts from married quarters and washing lines. The majority of these were due to occupants failing to secure their quarters or leaving washing out overnight.

Here are a few useful hints of which we hope you will take note:

Do not leave washing/clothing on the line overnight.

Ensure that all doors and windows are secure before you go out during the day or evening. Remember it's a bad habit to leave your front door key on the outside, although it's handy for the children - it's even more so for the thief.

Avoid the habit of leaving valuables, handbags, purses etc unattended near open doors or windows.

Whilst watching television during the evening ensure that the rest of the house is properly secure.

Report watching incident to the police immediately particularly if you see any person acting suspiciously or who appears to be taking an unusual interest in your home or neighbour's house.

Complaints or suspicious incidents should be reported immediately to the JSPS Police Station Ext 4000 or HQ P&SS (RAFG) Ext 4767.

**HELP US TO HELP YOU!**



# VOLVO

The Volvo Specialists and Agent for Nato Forces

Excellent after sales services in our own workshop to individual requirements

## auto Reichmann

415 - Krefeld, Showroom - Sales: Siempelkampstr. 87

Tel. (0 21 51) 75 44 53 + 75 53 26, Open 7 days a week

Representative: R. Wachsmann

After Office hrs. (02 11) 31 25 60



BAOR PR

## School Report



Each year Kent School presents the Lady Alexander Trophy to the pupil judged to have given the School the most loyal service.

This year the award went to Pamela Le Carpentier, a fourth year girl of Rochester House. Over her years in Kent School she has competed for the School and her House in various sports, has taken part in School plays and musical evenings, has won the verse reading competition, helped with the running of Rochester Disco and even wielded a spade to beautify the School environment!

Her mother was there to see the presentation. It was a great surprise when she revealed that Pamela was born in Kent School! Research has revealed that this event took place somewhere in the History Department!

The photograph shows Pamela with the Lady Alexander Trophy, and a book presented as a reminder of a special day in her life.



### THE DANES IN WICKRATH



Towards the end of the Summer Term the children of St. Clement's took part in a new venture. A party of children and staff from St. Clement Danes School, London joined St. Clement's Wickrath and were hosted by the parents. A venture of this kind called for close co-operation between the staffs of the schools and the parents. The success of this co-operation paved the way for a visit that will be remembered by those involved.

The children of the two St. Clements joined together for a series of activities and visits. The activities included a welcoming Barbecue and a farewell Camp-fire. During the week there were visits to Bruggen, Schloss Dycke, Cologne, Mönchengladbach and the Fire Station at Rheindahlen. New friendships were made and new experiences shared.

Sincere thanks are due to all who made this venture possible, particularly to the parents for their wonderful hospitality.

### ..... AND THE WICKRATHIANS IN RURBERG.

Having said farewell to the Danes a party of Upper Juniors set off for Rurberg/Eifel where they enjoyed a week of sunshine in an environment rich in possibilities for purposeful activity.

A different programme each day provided opportunities for a comparison of environment together with studies of the village, woodland, lake-side and dam. Investigation mingled with re-creating provided a recipe for a very successful visit and the social training arising from the experience of living together was invaluable.

W. T. RANKIN



### RAISING THE ROOF

For ten weeks of the Summer Term workmen and contractors descended on St. Christopher's School to carry out major roof repairs which involved taking the old roofing off and replacing it with new.

Naturally the workmen made friends with the school pupils who were only too keen to help them get the jobs done by the end of term. One of the jobs which appealed to them most was tearing the old roof off.

There were natural breaks in the work on both the Junior and the Infant Sports Days when the roof workers had a bird's eye view of the children racing on the school field below them and their partisan cheering joined the shouts of parents encouraging the runners to greater efforts.

We are all looking forward to a more peaceful and certainly a drier Autumn Term this year.

M. Garland

### QUEENS SCHOOL VISIT GEMÜND

This year yet again, the Eifel was invaded for a week by the Queens School 6th Form and accompanying staff. Altogether a party of 116 were based at the Jugendherberge in Gemünd.



Canoeing session with Mr. Gregory.

# RHEINDAHLEN



Staff v. School football match.

## PART OF THE SUMMER YOUT



Two young Youth Club members getting instruction in angling from expert Don Davis.



Cricket Coaching

# ROUNDAABOUT



Karen Glen was selling tickets for the Kent School Charity Draw outside Rheindahlen NAAFI. A purchaser, who was, and still is anonymous, was impressed by her efforts and donated the ticket he bought to her.

Imagine her delight when this very ticket won her the first prize of a Colour Television set!



Frau Barlen is one of the few female engineers with P.S.A. and Mr. H. P. Johnson recently presented her with a 25 year Certificate of Service. Frau A. Schwidden and Mr. B. Shilton were also presented with certificates for 12 years Meritorious Service.

Left to right: Frau Schwidden, Mr. Shilton, Frau Barlen, Mr. Johnson and Mr. Arding, Regional Director PSA Germany.

# ACTIVITIES!!

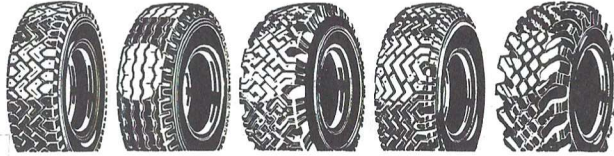


A very large crowd, well in excess of 300 children and parents, enjoyed a demonstration by the Fire Brigade.

From the excitement of the fireman climbing down the tower, to the operation of fire hoses by firefighters... there was something for everyone!



The 1975 Queen's Birthday Honours list announced the award of the Queen's Commendation for Valuable Service in the Air to Squadron Leader James Straughan. The picture shows Squadron Leader Straughan receiving the Commendation from Air Vice-Marshal Philip Lagesen, Deputy Commander Royal Air Force Germany. Left is Air Commodore C. Gaiger Broad.



**GUMMI VEST  
EXPERT RELIABLE SERVICE-GOOD VALUE**

Our price lists are displayed in:

**Brüggen:** RAF Officers' Mess, Sgt's Mess, PSI RAF

**Rheindahlen:** A, B, E and F Officers' Mess, PSI and PRI,  
No 1, 2 and 3 Civ. Mess, No 1 Garrison Sgt's Mess  
RAF Officers' Mess, RAF Sgt's Mess

**Wildenrath:** PSI RAF · **Wassenberg:** PRI 13 Signal Regt.

**Wegberg:** RAF Hospital · **Bracht:** PRI 3 BAPD

You are exempt from added value tax by using our special order forms and paying through your Mess/Central Account.

**GUMMI VEST**

**Mönchengladbach**  
Grevenbroicher Str. 44-46  
Tel. (02161) 4 41 82 u. 4 11 00

**Elmpt**  
an der Beek 255  
Tel. (02163) 71 53



**Posted?**  
A special service for service families!

Give expert advice, have staff that care and the vans you see everywhere.

**SHAW'S REMOVALS**

Twice monthly service to and from Germany including:

- \* complete customs clearance
- \* storage facilities.
- \* insurance.
- \* packing.
- \* distribution & collection in the U.K. on part load basis or special delivery.

For free quotations and advice contact either:

**F.W. Shaw & Sons**  
(Worthing) Ltd.  
82, Teville Road,  
Worthing, Sussex

**Mrs. J. Gray**  
1 Wessex Close  
Wildenrath  
Tel.: Ext. 269



**Seeing is believing!**

**on show - Mini to Jaguar XJ6**

Easy approach from Rheindahlen village – follow signs for Rheydt – on entering town pass the Kaufhof – through two traffic lights – left at cross roads – first right – over railway – to end then left – Druckerstr.

Easier still – call us and we will collect you.

**Rankins of Rheydt**

**Sales**  
**Service**  
**Spares**

**R. Rankin & Co.**  
405 Mönchengladbach 2  
Druckerstraße 17  
Tel. (02166) 49055

**AUSTIN      MORRIS      MG      TRIUMPH      ROVER      JAGUAR**

## Your Garden in September

### FLOWER GARDEN

The tasks in the garden this month are mainly keeping it tidy and starting preparation for next springs' flowers.

Remove all dead flowers and seed pods, remove exhausted annuals and cut down all withered perennials.

Lift Gladioli that have finished flowering, tie in bunches and hang in garden shed or cool cellar to dry.

Dahlias should be kept tied, dead blooms removed and broken leaves and shoots removed.

This is a good time to thin out weak shoots from roses together with any broken or damaged shoots, this will eliminate the possibility of diseases becoming established.

Wallflowers, Auriculas Primroses and Polyanthus should be planted out into their spring positions for early flowering.

Bulbs that should be planted now for spring flowering are: — Anemones, Crocuses, Montbretias, Narcissi, Snowdrops and Scillas — but NOT Tulips, these will be dealt with later.

### VEGETABLE GARDEN

Keep the two working throughout the month and keep down the weeds, these together with finished crops such as peas, broad beans etc., should be removed and burnt to prevent pests such as slugs using them for their winter quarters.

Keep Runner beans picked to prevent them going old and water whenever necessary.

Fork over any open garden that is not going to be used until next spring.

Good gardening  
Harry Hort

**Tuesday**



**Circle**

We of the Tuesday Circle would like to meet you. We've probably seen one another pushing our trolleys round the NAAFI, waiting at the Medical Centre or even walking the dog. We may have smiled and even said 'Hello', but we'd like to get to know you. The Circle is for every lady of the Garrison whether you have a hundred other things to do. or — and most especially — if you are new or don't know many people or would like to find fellowship, an interesting programme of events or simply a friendly chat. The Circle meets at 8 pm on the second Tuesday of the month in the Church Centre (opposite the B.P. Garage) for our main meeting, and the fourth Tuesday in the home of one of our members for a more informal get-together. Watch "Stop Press" for details of our programmes.

The Tuesday Circle is sponsored by the ladies of St. Andrew's and St. Boniface churches, but is open to all — especially you. Will you join us?

## WIGFALLS AT HOME

require

## REPRESENTATIVES

(of Management potential)

J. G. Graves (1967) Ltd (polishers of WIGFALLS AT HOME) is one of Britains leading independent Mail Order Companies, and as such is involved in a period of expansion with the object of developing activities within the following regions: —

BIELEFELD  
DORTMUND  
HEINDAHLEN

Preferably possessing some experience of Mail Order canvassing, applicants should be resident in, and have good geographical knowledge of the above areas.

With direct accountability to our National Sales Development Manager, duties and responsibilities will involve the setting-up of a new sales area. Initially working alone, it is expected that the representative will develop the area, and ultimately engage, control and motivate her own team of representatives.

We offer a good basic salary, plus commission and expenses, together with the usual fringe benefits associated with our type of business.

Written applications stating full details to: —

### THE PERSONNEL CONTROLLER

J. G. Graves (1967) Ltd.  
Blackburn Road Bolton, BL1 7LT

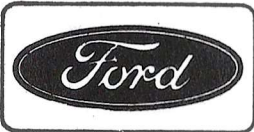
ENGLAND

Please come and see

without obligation our large selection of

## SECOND HAND CARS

Our salesman Herr LEHMANN would be glad to come and fetch you and take you back home again without obligation. He will be pleased to advise you of all questions regarding hire purchase, insurance, and how to save the 11% added value tax.



# Coenen

When Do We Meet?  
Mönchengladbach

Phone MG 31166  
Burggrafenstr. 55-79

## DON'T WASTE WATER

Rheindahlen JHQ used 946.412 cubic metres (cbm) of water (over 208 million gallons!) last year.

It is estimated that this was used as follows:

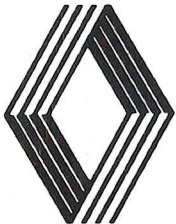
- Families – approx 330,000 cbm (48,000 gals per family)
- Schools – approx 300,000 cbm (66,000,000 gals)
- Units and Messes - approx 316,000 cbm (69,500,000 gals)

We have our own Water Works in Rheindahlen and so our water is very much cheaper here than elsewhere in BAOR. Nevertheless, costs are substantial as the following figures show:

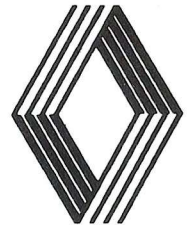
a. Cost of production (financial year 74/75)	DM 425,885.40
b. Drainage, pumping and sewerage costs (based on consumption)	DM 364,741.95
	Total DM 790,627.36
	or (at DM 5.50 = £) £ 143,750.52

Costs will be at least 10% higher this year. There is no shortage of water and it is not intended to suggest that necessary usage should be restricted. However, please remember that water does cost money so do not waste it.

**There is no sense in pouring money down the drain!**



# RENAULT DUTY FREE SALES



■ Personal Service ■ The Best Prices ■ Immediate Delivery ■ Full Finance Facilities

## Autohaus P. G. Bongartz

4056 Schwalmthal-Waldniel  
Ungerather Str. 60  
Tel. Schwalmthal 02163 / 41 35

Mr. Mike Crisp  
Sales Manager: Tax Free Sales  
Tel. Erkelenz 02431 / 33 86

Mr. Crisp visits JHQ by appointment or is in attendance at our showroom just three miles from JHQ Main Naafi every Saturday morning.



**LIBRARY NOTES**

Appearing on the shelves shortly : -

"A Three Pipe Problem" by Julian Symons, a novel for Sherlock Holmes fans.

"The Man On The Bridge" by Stuart Black, a spy thriller.

"The Sunshine Patriot" by Norman Partington, a novel of the American War of Independence.

"Jock of the Bushveld" by Sir Percy Fitz Patrick, the story of a dog.

"The Arab mind, a need for understanding" by John Laffin, an appraisal of Arab politics and attitudes.

"No Surrender, My Thirty Year War" by Hiroo Onoda, the story of the man who hit the headlines in the Spring of 1974 by emerging from the Philippine jungle when at last he had been convinced that World War 2 was over.

Anyone inspired by the recent Art Exhibition at Cambridge House might be interested in the following new books: -

"Complete guide to Watercolour painting" by E. A. Whitney.

"Complete guide to portrait painting" by F. J. Finck. J. C.

**DO ANY OF THESE NAMES MEAN ANYTHING TO YOU?**

BOLEX, KODAK, EUMIC, AGFA, CANON, NIKON, ELMO, SANKYO, YASHICA, CHINON.

If so, do you know that there is a club at Wildenrath which caters just for you. At the Wildenrath Cine Club you can meet other film makers. There are a few experienced ones who produce films complete with sound tracks and a lot of people who have just bought a cine camera and are wondering what next. By coming along to club meetings you may find the answers to some of the problems you could be experiencing in film making. If you have already found the answer to your problems come along anyway, and share your expertise. Someone may be able to tell you how to save money when you are filming by passing on tips which ensure that when your film is returned to you, it doesn't have scenes that are too dark or too light, and that when you use that zoom lens your film doesn't all go fuzzy and out of focus. Why not ensure that all 50 feet of it is useable and not something you have to keep making excuses about to the family as they sit watching while you project it on the side of the fridge.

To start the season in Sept. 25th we are having a film show of members' films. Some of them have been highly rated in the London Amateur Film Festival and in the Ten Best Competition organised by the magazine 'Movie Maker'. So to find out if we have anything to offer you come along on this night, its free! We meet at the Amenities Centre, RAF Wildenrath at 8 p.m.

**AUSTIN - MORRIS - MG  
TRIUMPH - ROVER - JAGUAR**



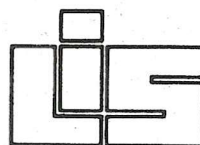
**J. MASSIER**  
**MÖNCHENGLADBACH**

KÜNKELSTRASSE 125 - TELEFON 2 21 16

Sales      Service      Spares

# INFLATION

IS ERODING YOUR FAMILY PROTECTION YEARLY. IF YOU HAVE NOT REVIEWED YOUR LIFE ASSURANCE WITHIN THE PAST THREE YEARS YOU ARE ALMOST CERTAINLY UNDER INSURED



## Peter Fisher

OF

(LYNN INSURANCE SERVICES)  
COLTISHALL HALL, NORWICH MEMBERS OF THE ASSOCIATION OF INSURANCE BROKERS

IS AVAILABLE FOR ADVICE ON ALL ASPECTS OF LIFE ASSURANCE, UNIT TRUSTS, LUMP SUM INVESTMENTS, BUILDING SOCIETIES, HOUSE PURCHASE ETC.

FOR AN INFORMAL CHAT CONTACT:

**ERKELENZ (02431) 4680**

**5144 WEGBERG**

**RATH-ANHOVEN**

**HAUPTSTRASSE 128**

OR SEND COUPON:

T.R.B.

NAME .....

ADDRESS ..... EXT. ....

## The Cambridge University Chamber Choir

The English choral tradition, so well established throughout the length and breadth of the country (and, I hasten to add, with equally strong counterparts in Wales and Scotland!) is perhaps nowhere so concentrated and refined as it is Cambridge. The world famous choir of King's College Chapel, not to mention those of other Colleges such as Clare and St. John's, have been delighting congregations and audiences for many years. Now, Rheindahlen has had a chance to experience some of this excellence at first hand, with the visit of The Cambridge University Chamber Choir who gave a recital in St Boniface Church on Sunday 13th July at the invitation of the St Boniface Choir. And excellent it most certainly was.

For their programme the Choir chose a most varied selection of English religious music spanning a period from the 13th to the 20th centuries. All the works performed pose technical difficulties for singers, but how well the CUCC overcame them! There was something for everyone to savour — marvellously accomplished choral technique, near perfect intonation, fine soloists, wonderful clarity of line and a dynamic range incredible in a choir of such a size. I suspect though, that for most of us, the abiding impression will be the sheer beauty of music sung with such sensitivity and at the same time with such vitality. It was a magical experience.

It was good to see St Boniface reasonably full and even better to hear how appreciative the audience was — so much so that there were two encores at the end, when the Choir sang a couple of spirituals. Many of us would happily have stayed there listening half the night...

After the recital, the audience left the Church in a state bordering on euphoria. All were unanimous on one point — the Cambridge University Chamber Choir **must** come again!

APM H



**AUDI**

All Cars at special prices  
for NATO Forces.

Volkswagen and Audi Service-Station  
with Computer-Diagnostic-Centre

**NATO-Agency GEBR. GILLISSEN KG.**

406 VIERSEN, Krefelder Str. 19-21, Telefon 02162/12363

Permanent show of new and second hand cars.  
Monday's until Friday's 8-18 hrs. Saturday's 10-12 hrs.

## Small Ads

### BALLET CLASSES

New Term begins on Sept 16th

Tues St. Georges School. Primary. Grade 2 and Grade 3.  
Weds St. Christophers School. Primary. Grade 1.  
Thurs St. Patricks School. Primary. Grade 1

Enquiries Anne Warren 5 Marlborough Rd. JHQ. Ext 4093  
PIANIST REQUIRED — for ballet Tues Afternoon.  
↳ Anne Warren Ext 4093

### QUARANTINE FOR DOGS

#### SPECIAL TERMS FOR THE FORCES

Apply  
Lt Col R. H. Cuming  
Hill Farm  
Tel.: Soulbury 257

Bragenham  
Leighton Buzzard  
Beds.

### FRENCH TUITION — CHILDREN

Commencing 9 Sept there are vacancies for private tuition in French. Beginners classes held 4.00 pm to 5.30 pm Mon and Thurs. Contact Mrs. Stride (French born), 29 Ottawa Avenue, Rheindahlen — Tel.: Mönchengladbach 59677.

**FOR SALE** 19 inch Black & White Phillips Television complete with aerials: DM 150. Corner Bar and Benches for ten people (Standard caravan cushions fit benches): DM 80.

Healthy 12 year old Cocker Spaniel wants a new home as the humans in his family are going to UK in September. He is inoculated against rabies, is used to a garden and is a steadfast friend to the person who feeds him.

Enquiries please through WO 2 CULLIP, WILLICH Mil 230

**PSI SHOP**  
**SHQ RAF RHEINDAHLEN**

Stocks of Camping Equipment now available  
TV, RADIO, Car Radio, Stereo and Audio Equipment,  
Swiss and Japanese Watches, Cameras and Projectors,  
clocks and watches.

All prices tax free

Open to entitled personnel only

# NAAFI NOTE BOOK

This month David Rackham, manager of the shopping centre foodhall, takes up the pen as our new Naafi correspondent. During his last posting in Verden David produced a regular column for the local magazine up there, and we're sure you will agree that he has developed a style that is all his own.

## FOODHALL

Have you been making the most of the special buys with the 'Shop 'd Save' motif? If not, then now is the time to start for these are all low-price economy shopping lines which have been introduced to help the ladies stretch their housekeeping a little further, and they are a permanent feature of our foodhall range. And don't forget that these lines are backed by our regular special offer promotions – the next programme starts on 9 September.

A reminder to all freezer owners that you can get double discount by buying meat in bulk from the butchery counter. The special terms apply to beef, lamb, and pork by the carcass and to primal cuts of beef – ask Trevor Allen, our butchery manager, or any of the lads behind the counter there for more information.

## GIFTS AND DURABLES

Besides selling freezers we can also arrange sound insurance cover for their contents – Norman Marsh, the gifts and durables manager, will be only too pleased to tell you all about the scheme.

The big news on the durables side this month is the Star Buys programme which is now into its second week. If you haven't done so already, collect your copy of the brochure giving full details of all the attractive bargains. But, as we always say, the Star Buys are on offer only while stocks last, so don't take too long in making up your mind.

And while you're visiting the shop, take a good look at the range of Noritake china now on display – it really is superb value for money.

If you are in the market for a sewing machine then you can get some expert advice on the subject any Saturday morning from Richard Gerhardus of Pfaff. Herr Gerhardus also knows all about the range of Passap knitting machines available through Naafi.

## CLOTHING

Margaret Metcalfe, who looks after the ladies' and children's departments, tells me that Marks & Spencer co-ordinates are definitely 'in', and of course now is the time to start thinking about your outfits for the autumn and winter seasons. If you don't see precisely what you want on the rails then browse through the latest Littlewoods catalogue for some fashionable ideas.

But let's not forget the menfolk. A good range of ready-made suits is always on sale, and it doesn't take more than a few minutes to pop into the shop and try one on for size. If, on the other hand, you're looking for something on the made-to-measure side, have a chat with Jay Marshall in the menswear shop who will be happy to show you the excellent range of styles and cloths available.

This is where I sign off until next month, I hope to see you in the shop and in the meantime don't forget to keep saying 'stamps please' when you get to the checkouts.

D. R.

# Naafi CAR PURCHASE PLAN '75

## 1. COMPREHENSIVE HIRE PURCHASE

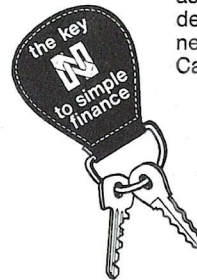
- low interest rates
- free life cover
- insurance premium included in HP agreement
- cover against premature repatriation.

## 2. APPOINTED DEALER SERVICE

posters and leaflets in all Naafi shops give the full list of appointed dealers in your area.

## 3. DISCOUNTS ON NEW CARS

ask the Naafi car representatives for details of those discounts available on new cars from leading manufacturers. Call 02161-59014.



The Naafi hire purchase plan also covers used cars, motor cycles, caravans, boats and marine engines.

WRITE TO THE CREDIT MANAGER, CAR SALES OFFICE,  
HQ NAAFI ES, BFPO 40. OR CALL 02161-59014.



# SPORT

Cpl Mark Appleyard. Rheindahlen scratch golfer at the Summer Golf Meeting on 31st July at RAFG Golf Club Bruggen.



Queen's School Swimming Gala Guest of Honor at the Gala held on July 10th was Mrs. E. E. Lowe whose husband is Director of British Families Education Service, North-West Europe. Our photograph shows Janice McLoughlin receiving the cup for Girls Open Diving from Mrs. Lowe.



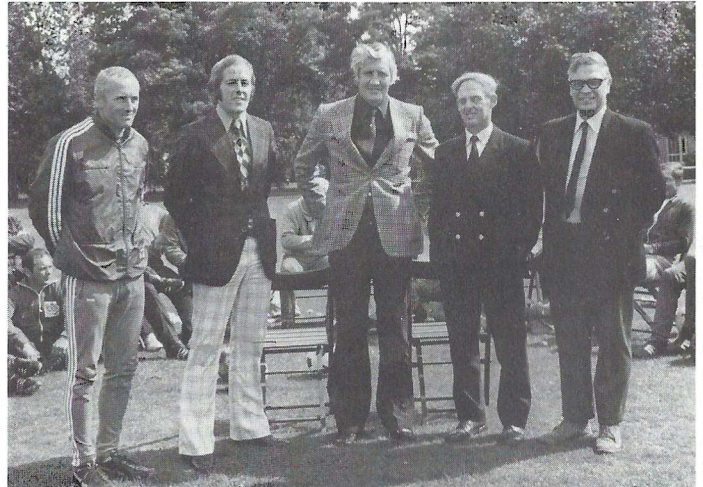
BAOR PR

The Garrison sports fields have seen the unusual sight for a baking hot July of soccer players, in track suits, in early training.

The answer says Major Andrew Paul, Secretary of BAOR Football Association, is the first Football Association Preliminary Coaches Courses to be held in Rhine Army. The course is being supervised by Major Jack Beasor, APTC, and QMSI Derek Heatherington.

Ian Greaves, Manager of Bolton Wanderers and his team coach, Jim Conway, were guests at the first session to help with instruction.

Pictured left to right: QMSI Derek Heatherington, Jim Conway, Ian Greaves, Major Jack Beasor, Major Andrew Paul.



## HEADQUARTERS RHEINDAHLEN GARRISON CRICKET XI WIN RHINE AREA FINAL OF ARMY CUP

The Army cricketers of the Garrison achieved a notable victory by winning the Rhine Area stage of the Army Cup. Undoubtedly this has been a first class team effort in particular their fielding.

The final was an excellent game to cricket. The Garrison batted first and scored well throughout, finishing with 140 runs.

An excellent innings by the VSD Mönchengladbach skipper SSgt Jones of 66 not out almost won the game. However they fell 4 runs short.

Good luck to the Garrison XI in the BAOR semi-final against the 4 Div. winners.

Left to Right: J. Warner, M. Simpson, C. Brome, L. Watkins, J. Peter, S. Brice, T. Thompson, H. Keatinge, B. Barrett, J. Skinner, C. Garton, R. Wallace.

#### ARMY SPORTING FIXTURES – SEPTEMBER

3 Sep Tennis – BAOR Inter Unit Finals  
4/7 Sep Rugby – Coaching Course  
10/13 Sep Tennis – RAOC BAOR Open Tennis Tournament

#### ANGLO-GERMAN ATHLETICS

On July 11th in Rheindahlen, Queen's and Kent Schools met 5 secondary schools from Mönchengladbach in an athletics match. 1st to 4th year boys and girls were involved in the full range of events it is estimated there were 350 competitors. This was the 4th meeting in recent years. As always competition was very keen with Queen's/Kent eventually running out the Winners by 415 to 374 points.

#### INTER SCHOOLS SWIMMING GALA

This is a local annual event for children of 1st, 2nd, 3rd, year of secondary school age. Taking part were Queen's School, Kent School, Cornwall School from Dortmund and this year for the first time, Cheshire Middle School from Bruggen. Queens eventually won both the overall competition and the first year competition.

#### ST. ANDREW'S SCHOOL SPORTS

For the first time ever, a team of seven year olds from St. Andrew's Infant School, complete with ardent supporters, travelled to Laarbruch on 8th July to compete in the Inter-First School Sports.

Their training – strictly feminine naturally in an infant school – stood them in good stead and the team arrived back jubilant with certificates to prove their worth and a colourful banner to adorn the school "Good" Table. Well done, children. We are immensely proud of you all.

Our own annual sports day was on the afternoon of July 22nd. On reaching our positions beside the track we stopped to get our priorities right. Yes, Mummy and Daddy were there. No Victor Ludorum was presented, but a matching pair of lollipops to every happy child.

#### OBERBURGERMEISTER CUP

This is an annual competition between the boys of Queen's lower School and the equivalent aged boys of the Math. Nat. Gymnasium Mönchengladbach. The competition is in two parts, a football match and an athletics match. Queens started with the football and were unlucky to lose 2-1 after leading 1-0 at half time. This made them 20 points down to start with.

So the athletics were to be their only hope. The winner was decided by the last event – the relay – which Queen's School won. The final result was Queen's School 142, Math. Nat. School 138. A very satisfactory final.

#### VDU IDEA AWARD

The CO, RAF Rheindahlen, recently awarded Sergeant K. Foreman £10 for producing a desk top aid for this Station's Supply Computer VDU Controller; his idea has been forwarded for further consideration under the MOD Suggestions Scheme. Sgt Foreman is now stationed at RAF Brize Norton.

### *Figaro* Albert Penatzer

Ladies and Gents Hair Dressing Salons also Manicures

JHQ Shopping Centre – Tel. M.Glabb. 5 95 68

S.West Extension, Cambridge Drive – Tel. 5 87 38

900-1800 hrs daily except Monday

## BARGAIN

### 1 Mercedes passenger car 280

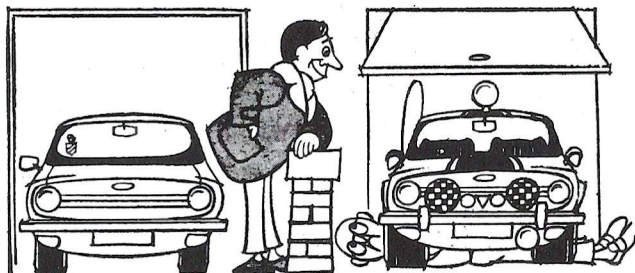
year: 1973	power steering
new car (export goods), RHD	leather seats green
air cond.	stereo radio recorder
colour: beige	price: for less than invoice

### ASITRA GMBH & CO.

D - 51 Aachen-Laurensberg

Phone: 0241 / 12071

office hour: M/F 09.00 – 17.00



## Ziebart. Possibly the most important optional extra.

Proud of your shiny new car?  
It looks great, doesn't it, with  
all those extras?

But how long will it stay  
looking great without the most  
important extra of all?

The Ziebart rustproofing  
treatment.

Ziebarting® protects against rust  
for 10 years, or 100,000 miles.  
That's guaranteed. Provided you  
bring us your car before it's 3  
months old and has travelled  
3,000 miles.

After that, it may still not be  
too late to save it from corrosion.  
If you have an older car, bring it  
in to us for a free inspection.

How does Ziebart rustproofing  
work?

A special sealant is sprayed  
into every hollow area, on to  
every rust-prone spot in your car.  
Clinging to paint and metal, it  
won't let moisture through.

The cost of Ziebart ten year  
protection is DM 330 for an  
average family car. About as  
much as it could depreciate  
through rust in just *one* year.

So it's really worth getting  
your new car Ziebarted before  
delivery. Or, at least, as quickly  
as possible.

Before unseen rust gets a grip.

KEN GIBBINS

4051 Elmpt/Rheinland

Gladbachstrasse

Tele 02163 / 5077 - 5078



**Cars that are Ziebarted first, last.**

# CINEMA PROGRAMME

Performances at 18.00 hrs. and 20.30 hrs. daily unless otherwise stated.

## GLOBE CINEMA

1	BADGE 373	X
2	THE LAW ENFORCERS	X
3	THE TAMARIND SEED	A
4	THE LAST OF SHEILA	AA
5, 6	MONTY PYTHON AND THE HOLY GRAIL	A
6	FIVE GUNS WEST - Matinee	X
7	KONGA - 14.30 only	A
7, 8	BADLANDS	X
9	THE CHARGE OF THE LIGHT BRIGADE	A
10	CARRY ON UP THE KHYBER	A
11	DILLINGER	X
12, 13	THE GREAT WALDO PEPPER	A
14	SLEEPING BEAUTY - 14.30 only	U
14, 15	ITS ALIVE	X
16	LADY SINGS THE BLUES	X
17	THE BLACK WINDMILL	X
18	I ESCAPED FROM DEVILS ISLAND	X
19, 20	BREAKOUT	AA
20	THE GOLDEN VOYAGE OF SINBAD - Matinee	U
21	HANNIBAL BROOKS - 14.30 only	U
21, 22	YOUR THREE MINUTES ARE UP	X
23	MR. MAJESTIK	X
24	S.P.Y.S.	A
25	BUSTING	X
26, 27	FRONT PAGE	AA
28	REPTILICUS - 14.30 only	A
28, 29	LEPKE	X
30	CARAVAN TO VACCARES	AA

## ASTRA CINEMA

1	SUPERDAD - 18.00 hrs. only	U
1	BULLITT - 20.30 only	AA
2	THE DON IS DEAD	X
3	MARY POPPINS - 18.00 only	U
3	TRICK BABY - 20.30 only	X
4	YOUNG WINSTON	A
5, 6	APRENTICESHIP OF DUDDY KRAVITS	X
7, 8	SONG OF THE SOUTH - 18.00 only	U
7, 8	SERPICO - 20.30 only	X
9	HANG 'EM HIGH	X
10	THE WAR BETWEEN MEN AND WOMEN	A
11	CALLAN	A
12, 13	THE TAKING OF PELHAM ONE TWO THREE	AA
13	SMOKEY JOES REVENGE - Matinee	U
14, 15	THE SPIRAL STAIRCASE	A
16	SOLDIER BLUE	X
17	THE NAKED PREY	A
18	THE WILD BUNCH	X
19, 20	HOUSE OF WHIPCORD	X
21	ROYAL HUNT OF THE SUN	U
22	A MAN CALLED HORSE	AA
23	A SHOT IN THE DARK	A
24	THE BRIDGE AT REMAGEN	AA
25	HIGH BRIGHT SUN	A
26	HOT ENOUGH FOR JUNE	A
27	ATLAS - Matinee	U
27	SOMEBODY LOVES ME	U
28, 29	THE SOUND OF MUSIC - 19.00 only	U
30	HAP KI DO	X

# STOP PRESS

## BULK REFUSE

3rd and 17th September.

## ANGLO-GERMAN CONTACTS

A Committee exists, on which sits the Garrison Commander, to effect contact between British and German families. In proposing an arrangement, account would have been taken of age, make-up of family, background and interests. For further information ring RA 2787.

## THE LADIES BRIDGE CLUB RAF RHEINDAHLEN

Meets in the Ladies Room of the RAF Officers Mess each Wednesday at 13.45 hrs. New members will be most welcome. If further information is required contact Mrs J Fowle ex. 4695 or Mrs P Cafferata ex. 4743.

## RHEINDAHLEN BRIDGE CLUB

Meets in F. Officers Mess for Duplicate Bridge Evenings on Tuesday at 19.30 hrs. For further details contact the Secretary Mrs. Y. Thierry, MG Mil 247 or the Treasurer Flt. Lt. A. Moulds, RA 2693.

## PSA WIVES CLUB

Evening Meeting Wed 24th Sept. Our next meeting will be in St. Andrews Church Hall at 8 pm. Mrs. Connie Brown will be talking on "Germany - Further Afield" a follow up to her last talk in May.

## THE RAF RHEINDAHLEN WIVES CLUB

The Wives Club restarts on Sep 8 when Mr SOWDEN will be giving a talk on Essen, this will be followed by a glass of wine. Sep 22 Father Flavin will be showing a film and giving a talk on the Jumbulance.

There will be the usual Bingo played. New members are welcomed. The meetings are held in the RAF Sports and Social Club and commence at 8 pm.

The bus leaves Dorthausen Garages at 7.30 pm, St Andrews School 7.50 pm and St Christophers School 7.55 pm.

## LADIES BADMINTON

If you would like an enjoyable game of badminton do come along to the RAF Gymnasium on Mondays and/or Thursdays. The times allocated to us are:

Mondays	-	1400 hrs - 1600 hrs
Thursdays	-	1000 hrs - 1200 hrs

The commencing date is Monday 15th September, 1975 and the cost DM 6.00 for the season. If you would like any other information please contact Margaret Sewell on Extension 4702.

## RAF OFFICERS WIVES COFFEE MORNING

The first RAF Officers Wives Coffee Morning following the Summer holiday will be held in the Ladies Room of the RAF Officers Mess on Tuesday, 30th September at 10.30 am. All RAF Officers wives who have recently arrived at Rheindahlen are especially welcome. A crèche will be available.

## HAMPSHIRE PRIMARY SCHOOL

Will all parents who live in DORTHAUSEN, RHEYDT and MÖNCHENGLADBACH (excluding Ayrshire Estate, White City and Windberg) please register their children who will be five years of age before 1st MARCH 1976, by calling at the school, if they have not already done so? Please do not forget to bring the children's.

**BIRTH CERTIFICATES.** These children will start on Thursday 11 September. Any parents arriving in station during the school holidays are asked to register their primary school age children on MONDAY, 8th September, between the hours of 1000 and 1200. It is important that children are enrolled either during the current term or on MONDAY, 8th September, in order that the new term may start smoothly on the Tuesday.

## FIELD END FOLK CLUB

9th Sept.	Barry Skinner
23rd Sept.	Singaround
30th. Sept.	Jacqui and Bridie

RAF Sports and Social Club at 20.15.

## ALLIED OFFICERS WIVES CLUB

German Ladies Tea. There will be an exhibition of German china presented by Tegelaers of Mönchengladbach and a film of Germany. September 25th at 2 p.m. at the I.O.C.

**Scout Shop** will be closed for all postal and counter sales from 26th September until 13th October.

## RHEINDAHLEN YOUTH FOOTBALL CLUB

The club is entering two teams in the International Youth League this coming season. A Junior Team for boys who will be 13 years old or under on 1. 9. 75 and a Senior Team for boys who will be 16 years old or under on 1. 9. 75. Boys who are interested in playing should leave their names and dates of birth at the Youth Club or give them to Mr. Keenan at the first training session which will take place at 1700 hrs. Tuesday 2nd Sept. 1975 at the Youth Club.

## RHEINDAHLEN FLOWER CLUB

The next meeting will be held on Wednesday 10th September at 2.15 in the Marlborough Club Ballroom. The demonstrator will be Mlle. Vanderhaagen. Library, sales table, raffle, china, coffee and creche available from 1.45 p.m. Admission to non-members and all new-comers to Rheindahlen will be most welcome.

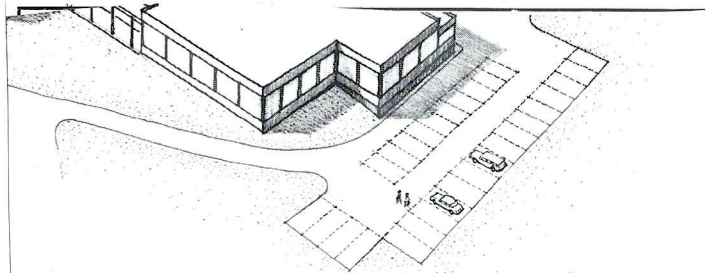
## TUESDAY CIRCLE

September 9th - Make-up demonstration. Create a new 'winter face' Meeting in the Church Centre at 8 p.m. Informal meeting Tuesday 30th September with Mrs. Sowden, 4, Leicester Way. Take your favourite records along. Everyone welcome.

## 'USEFUL INFORMATION'

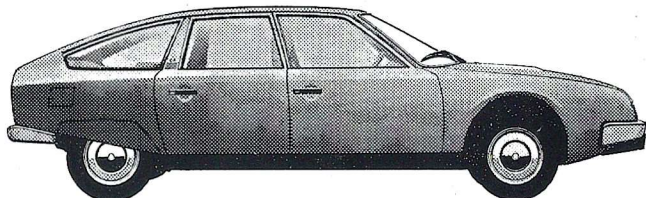
### NAAFI

Opening hours for Thursday "14.15 to 18.00 hrs."



SEPTEMBER 1975

# CITROËN



**Over 15 Years reliable service as sole agent for British Forces. Your direct factory dealer.**

SPECIAL NATO FORCES PRICES  
CX FROM FF 21.180. · (DM 11.521 Approx)

**(ZIEBART RUSTPROOFED WITH 10 YEARS GUARANTEE !!!)**

## The new Citroën CX

»drive today the car of tomorrow«

**KEN GIBBINS**

T. Eng. (CEI) M. I. M. I. A. M. B. I. M.  
NATO FORCES AGENT

»**GRENZLAND - GARAGE**«

4055 Niederkrüchten / Rheinland

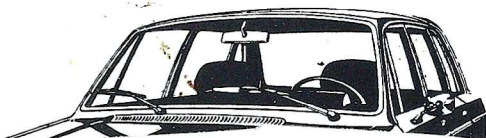
Gladbacher Straße

For information and demonstration phone 02163/5077/5078  
or write now !!!

SALES REPRESENTATIV: Mr Mike Harding  
(after Office hrs Tel.: 0031-45/251920)

# VOLVO

**(ZIEBART RUSTPROOFED WITH 10 YEARS GUARANTEE !!!)**



**ZIEBART**   
VEHICLE RUSTPROOFING

**Cars that are Ziebarted first, last.**

**FOR INFORMATION**

**OR DEMONSTRATION**

**PHONE OR WRITE NOW!**

**KEN GIBBINS**

T. Eng. (CEI) M. I. M. I. A. M. B. I. M.  
NATO FORCES AGENT

»**GRENZLAND - GARAGE**«

4055 Niederkrüchten / Rheinland

Gladbacher Straße · Tel. 02163/5077/5078

SALES REPRESENTATIV: Mr Mike Harding  
(after Office hrs Tel.: 0031-45/251920)