

The Rheindahlen Bulletin



The 113 mph 5 Seater Sports Coupé



move over...

GOOD NEWS TRAVELS FAST

GREAT NEWS for every British serviceman who is . . . will be . . . or has been serving in H.M. Forces overseas. Despite all the recent taxes and revaluation you can own a BMW of your choice and save from £759 to over £2,100 on U.K. prices. In some cases nearly half price! Every one of these superb 'family saloons with sports car performance' is built to im-

pressive safety standards with reserves of speed and acceleration to ensure complete mastery of any traffic situation; each is the ideal choice for both town and motorway driving. Compare BMW performance with competitive marques and you'll find that BMW is the leader—every time.

*Other models include: 106 mph BMW 1602 · 108 mph BMW 2000
121 mph BMW 2500 · 128 mph BMW 3.0 S · 132 mph BMW 3.0 CS*



2002

To: BMW Concessionaires GB Limited
BFG Information Office, 4930 Detmold-Brokhäusen, Oberngarten 2
Tel.: Detmold (0 52 31) 2 89 97 *FW

Please send me details of the BMW range, my special privileges, and the name of my BMW Great Britain representative for British Forces in Germany.
See Rod Jones at the NAAFI Saturdays 10.30 - 1.30.

Name

Address

Telephone

Editorial

Having struggled (happily!) to the top of the pile of contributions which have come in to the Bulletin this month, we can only say thank you for your response to last month's plea for support. It is heartening to know that this column is read by so many! We are now in the slightly embarrassing, but infinitely more welcome, situation of being able to exercise a choice over what items to include, — (previously, it was almost a case of if we could read it, we printed it!) — and inevitably this means that some contributions will not appear. Please do not lose heart. If the article is of general interest, it will be held over and possibly used in a later issue. If it is an account of a Club meeting or activity, and is therefore dated, please send us in another article about your next meeting, and we will try to ring the changes and be fair to everyone.

We would like to draw your attention this month to two organisations which do much to promote goodwill and friendship between the British and the Germans. All too many of us return home at the end of our tour having seen much of Germany, but knowing little of the people. The Anglo-German Relations Committee tries to rectify this state of affairs by arranging contacts between British and German families with common interests. If you are interested in meeting a German family please contact either Lt. Col. W. J. E. Sandford, Deputy Commander, Rheindahlen Garrison, Ext. 2786, or Sqn. Ldr. D. E. Headland, OC Education Squadron, RAF Rheindahlen, Ext. 4748. The Anglo-German Club, which is run by the YWCA, and meets approximately once a month, has been in existence for several years now. Apart from talks and discussions, there are visits to the Garrison Theatre, parties, and in the summer, coach trips to places of interest. This Club is re-opening on Tuesday, 16th November at 2000 hours in the YWCA Club, and both new and old members will be made welcome.

And finally, a quick reminder — if you have not yet submitted an entry for our Christmas Cover Competition, details of which appeared in this column in October, there is just time before the closing date on November 8th.



General A. Schnez, Inspector General of the German Army, paying his farewell visit before retirement to HQ Northag. Accompanied by the Commander, Northern Army Group, General Sir Peter Hunt, and the Chief of Staff, Major General H. H. von Hinkeldey, General Schnez is seen inspecting the International Guard of Honour on the forecourt of the Joint Headquarters.

EDITOR: Mrs. S. Ball (Ext 4639)
ASSISTANT EDITOR: Mrs. S. Furlong (Ext 3297)
EDITORIAL STAFF: Mrs. R. Grafton, Mrs. L. Mears (MG 59937),
BUSINESS MANAGER: Major A. N. Paul (Ext 2985) *FW

SERVICE ADVISORS TO THE EDITORS: Major M. Hopkin
(Ext 3279), Sqn Ldr D. Headland (Ext 4748)
ADVERTISING MANAGER: Herr Thiel (Ext 2934)
PRINTER: Fritz Ecken, 4056 Schwalmtal 1

ALL CONTRIBUTIONS TO THE MAGAZINE MUST BE RECEIVED BY THE 10TH NOVEMBER FOR THE DECEMBER EDITION. They should be sent to the Editor, Rheindahlen Bulletin, RAF Rheindahlen, BFPO 40.

The material in this magazine is copyright reserved and should not be reproduced without permission.

Front Cover: Rheindahlen Garrison Fire Station. Photograph by Barry Ellison, RAFG PR.

Rheindahlen Garrison Fire Brigade

The Rheindahlen Garrison Fire Brigade (71 AFB) is a unit of the Army Fire Service, a Service sponsored by the Royal Army Ordnance Corps. Brigades of the Army Fire Service are provided for the protection of Army and other MOD property in Depots, Installations and large Garrisons in the UK and those parts of the world where British troops are stationed. The Brigade in Rheindahlen enjoys a special responsibility in protecting not only the property of the MOD and the quarters of members of the British Forces and those of other nations attached to HQ Rhine Army and Northern Army Group in Rheindahlen and District, but it also provides a first attendance if called to any fire which occurs in that part of Germany near the Garrison Area.

The Fire Station, built in 1954, in Queen's Avenue, stands on a site which is roughly the centre of the Garrison Area. It is ideally sited and under normal conditions an appliance from the Station can reach the farthest point of the Area from the Station in about 3 minutes. The Station has a complement of two fire appliances, one Station Officer, 23 other ranks and 4 Watchroom attendants. The complement is divided into two watches each working a 24 hours duty system. All staff are German nationals but the Station Officer and all the Watchroom attendants are excellent English speakers so there should be no difficulty in giving a message in either language to any member of the Brigade answering the telephone. It is interesting to note that 5 members of the Brigade still serving joined the Army Fire Service when the Station was opened.

When a call is received at 71 AFB a response is generally made with 2 appliances, one of which returns immediately if the incident is minor in character. If however, on arrival, it seems that the outbreak, or other incident, is likely to keep both appliances and crews engaged for an appreciable time, then a mobilising or reinforcing procedure is set in motion and the next nearest Army Fire Brigade will send an appliance to stand by at Rheindahlen to give cover whilst the home appliances are engaged, or indeed assist them if necessary. Similarly there is a mutual assistance scheme between the Army Fire Service and the Local Authority Fire Brigades in the District. The relationships between the Army Fire Service and the Professional and Volunteer Brigades surrounding the Garrison is very close.

In addition to fire fighting, the Brigade engages in many and varied other activities for which their appliances and equipment are suitable; for example: standing by during the landing and taking off of helicopters and light aircraft at Rheindahlen and Wegberg, road accidents, effecting entry into quarters when the occupants have locked themselves out, carrying water when necessary,

removing branches of trees which may have fallen onto quarters after storms. An appreciable amount of work is undertaken at the request of the DOE and for which the Brigade's equipment is of value; usually ladders and pumps. The Brigade has attended 229 fires, special services and stand-bys since January 1st this year.

Some work is undertaken in demonstrating portable appliances to and training children in organised parties from schools in the Rheindahlen Area. Assistance is also given to Scouts who are interested in the firemanship badge.

For the technically minded, the Brigade's appliances are Bedford 5000 cc engines driving all four wheels and geared to a Sigmund single stage centrifugal pump with a capacity of 900 gallons of water per minute. Each appliance carries a Coventry Climax portable 300 gpm centrifugal pump driven by 33 BHP motor which may be carried to places beyond the reach of the larger machines. Each appliance can if necessary pump 1200 gallons of water a minute through its hoses, so that with both engines roughly 12 tons of water can be moved every minute. (Small boys will be interested to know that when a fireman is holding a 1" nozzle with 100 lb pressure on it he has in fact to overcome a pressure of 157 lbs which is why the fireman is sometimes lifted off his feet and also why it is necessary to have two firemen on a large nozzle.) Each fire appliance also carries 250 gallons of water in its tank which can be discharged through two small bore hose reels, one on each side of the vehicle. This permits the Brigade to make an immediate attack on most fires and it lasts for about 10 minutes using one

reel. During this time of course other firemen are working on getting a supply of water from a street hydrant or other source.

In thick smoke or toxic gases the members of the Brigade can be protected with the Siebe Gorman MINOX self-contained oxygen breathing apparatus, three sets of which are carried. In heavy work the supply of oxygen to each set lasts one hour.

Recently added to the equipment on the first appliance is a pneumatically operated chisel which allows the Brigade to cut through the metal work of aircraft and motor car bodies so that, following accidents, occupants may be released with a minimum of delay.

The doors of the Fire Station at Rheindahlen are not kept permanently open because the volume of traffic along Queen's Avenue causes too much dirt and leaves to be blown in. However, the Station Officer, Herr A. MAAHS, is always glad to welcome anyone who would like to see the appliances and equipment carried, or to discuss any matters of mutual interest. Arrangements may be made by telephoning him on RA 2345.

Gordon Meadley, Fire Adviser Rheindahlen



Photograph by Barry Ellson, RAFG PR.

Good Gardening in November

**"Remember, remember the fifth of November,
Gunpowder treason and plot."**

What has Guy Fawkes day got to do with gardening? you may wonder. It is a celebration for children by letting off fireworks and burning bonfires after dusk on November 5th: an annual event which, in sensible families, is supervised by a responsible parent. It is much better and safer to attend the bonfire which is to be organised by Garrison/Station HQ at 6 pm on the Golf Course in front of JHQ. Without listing all the bad points about garden bonfires, our advice is, "please do not burn bonfires in your garden".

In general, November is a digging and planting month: of course, the weather is a deciding factor. If you have not already done so, it is not too late to plant all deciduous trees, shrubs and roses. Dig all unoccupied ground; be sure that the sweet pea bed is done early. Plant May flowering tulips, mulch roses with manure, rhododendrons with peat, shrubs and herbaceous borders with leaves (not manure). Gladiolus corms and dahlia tubers must be by now in a frost-free place.

From now onwards, Autumn and Winter pruning may be carried out. It is very difficult to explain detailed pruning in writing: a practical demonstration by a qualified gardener is by far the best way of learning how to prune. Pruning is based mainly on a study of the natural habits and behaviour of a plant. Pruning is necessary to maintain, increase, or prolong the vitality of a plant, or to keep it in bounds, or to direct its energy to a special purpose. So in a young tree, it is necessary first to build up a good well-shaped framework and then to prune so that it produces a good fruit crop. In the apple, generally the idea should be to induce more fruiting spurs rather than new branches. It is important to note whether a plant blooms or fruits on new wood or old wood: that is the basic knowledge necessary for successful pruning and in general it could be said that trees and shrubs that bloom before midsummer do so on OLD wood from the previous season and those that bloom after midsummer do so on NEW wood. Always cut out dead, diseased and feeble growth but bear in mind that the old axiom of "Spare the knife and spoil the tree", is NOT always true: if you really doubt what should be done, consult an experienced hand: five minutes with Mr Fleming at the Garrison Nursery is sufficient time for pruning instruction.

Incidentally, by now, the grease bands fitted to trees may need renewing.

Lawns are often neglected at this time of the year, but give a little attention now and you will reap the benefit next year. Lawns should be aerated to a depth of about 4in by spiking all over with a fork; follow this by raking with a wire rake and top-dress with a mixture of coarse sand, fine soil (leaf mould or peat) and wood ash in about equal parts; bone meal may be added at 2 to 3ozs per sq yd. Bare patches in the lawn should be cut out and replaced by fresh turf. Brush the lawn in both directions: twiggy brushwood will

do for this purpose and various types of home made brushes can be made to suit the job. You may think that the lawn will need rolling after all this attention: you may be right, but don't overdo it, just use a light roller. Finally, never try to level a lawn with the roller; it is better to lift the turf and add or remove soil as necessary.

Many of you will be brightening your home with indoor plants: and I regret to say that many of you will unintentionally spoil and often kill your plants by giving them the wrong treatment. In particular, the cyclamen which is very popular at this time of the year, seems to suffer: cyclamen should be watered with discretion: don't stand the plants in saucers of water or give them frequent small amounts as this may cause sourness at the roots: wait until the pots give a hollow ring on being tapped and then allow them a good soaking.

Keep room plants from draughts and gas fumes, and from excessive heat such as tops of radiators.

Many attractive pot plants will be available in the Garrison Nursery.

The season of Advent starts at the end of November and lots of families will decorate their homes with "Advent Wreaths": decorations such as these may be purchased from the Garrison Nursery (MG 58124).

Until December, Goodbye and Good Gardening.

Salon Boehmke

We specialize in cutting, tinting, streaks and perms.

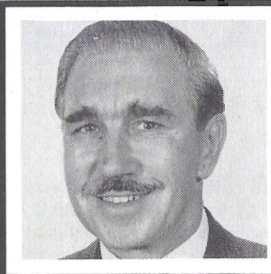
We also have a large selection of wigs and hairpieces at competitive prices.

Open Tuesday to Friday 0900 hrs - 1800 hrs
Saturday 0900 hrs - 1600 hrs

Officers' Club - Tel. MG Civil 5 93 23
and also at

Marlborough Club - Tel. MG Civil 5 98 91

NAAFI NOTE BOOK



BY
DOUGLAS McBIRNIE

FROM BAKED BEANS TO HI-FI

Stage two in the creation of the biggest and finest Naafi shop in the world was completed on Monday, 1 November with the opening of the new gifts, durables and sports goods department in the former foodhall.

In just two months the foodhall fittings were ripped out, the whole place completely redecorated, new lighting and modern shop fittings were installed and a sound-proof audio demonstration room was prepared and equipped. An augmented range of gifts, sound equipment, cameras, domestic appliances, and household goods valued at over DM 2 million is now on display in the new department, together with an excellent selection of sports goods and clothing. Extra staff have been recruited to cope with the expected increase in customers for there is no doubt that the new Naafi Emporium will act as a magnet to Service and British civilian families within a fifty mile radius.

TOY FAIR OPENS

The former gifts and durables department is being turned into a temporary Toy Fair and this will open for Units and for individual customers on Friday, 5 November. Units, Messes and Wives' Clubs buying toys in bulk for children's parties can enjoy special discounts, depending upon the size of the bill, and a free wrapping and labelling service will be available for purchases of this kind. There will be a wonderful range of toys, gifts and Christmas novelties on display, representing the cream of the selection shown at the international toy fairs held at Nuremburg, Milan, Brighton and Harrogate. Our toy buyers were there.

When the toy fair finishes immediately after the Christmas holiday work will start on the transformation of this part of the building into a Marks & Spencer style clothing shop to replace the existing shop in Collingwood Road.

CAR HIRE PURCHASE

The Car Hire Purchase offices are now located on the first floor of the main shop. The new accommodation provides this busy department with much improved facilities and customers seeking finance for a new motor car will find that they can transact their business much more conveniently and in greater comfort.

Mr John Fisher, who has been appointed district manager i/c the Rheindahlen shopping complex, has his office on the same floor and the chief clerk, Herr A. Osis, is also located there.

MAGIC DOORS

Mr Fisher has asked me to point out to parents the undesira-

bility of allowing small children to play around the automatic doors at the entry and exit of the main foodhall. I realise that the kiddies find these magic doors fascinating affairs but there is a real danger of an accident during the Saturday morning shopping scrum. He has also mentioned the problems caused by customers abandoning shopping trollies in the middle of the car parks. We have already had a couple pranged by reversing cars — the husbands were driving in both cases — and this is hard on both the trollies, which cost over DM 100.00 each, and the paintwork of the motor cars concerned. The wide pavement area between the car park and the roadway is the best place to leave the trolley if it is not possible to bring it back to the shop entrance.

FRESH BEEF

Judging by customer comments, the fresh German beef we are now selling in the Rheindahlen butchery has proved to be a popular innovation. There is a slight increase in price, approximately 10 pfgs a pound, but this would have been necessary in any case had we continued with the deep frozen Argentine beef, the cost price of which is climbing steadily.

FASHION SHOWS

The two Naafi Fashion Shows held at the RAF Queensway Club and the United Services Officers' Club on Saturday, 9 October 1971 attracted large audiences and favourable comment. Mrs Marjorie Hart, who is the new manageress of the Clothing shop, reported record business at the Clothing shop during the following week. Two Queens School pupils, Cindy Williams and Lorraine Sandford, aged 13 and 14 years, more than held their own with the professional models and were warmly applauded at both performances.

GIFT PARCEL SCHEME

A satisfactory solution to the problem of selecting, packing and posting Christmas gifts to the folk at home is to make use of our gift parcel scheme. Let Naafi do the whole thing for you. Leaflets in the main shop detail the contents and prices of three parcels of festive fare and seven varieties of wines and spirits. There is also a 3 lb chest of tea in the selection. Herr Osis, the chief clerk, will take your order and you can rest assured that delivery will be made from our UK warehouse in good time for Christmas. Orders must be placed by Friday 26 November. I can personally recommend these Christmas parcels — I have sent off half a dozen every year for the last seven years with complete satisfaction.



WINES AND LIQUEURS

HERE'S HOW IT WORKS

	price per bottle	DM
Bordeaux White Thoman & Cie		2.85
Châteauneuf du Pape – Rhône Red		5.20
Burgundy Red Supérieur Vieux Bouchard		4.90
Franz Reh Schlossprinz Sekt		3.00
Zeller Schwarze Katz	} handy 3-pack	9.50
St. Johanner Geyersberg		
Wincheringer Kleinberg		
Mateus Rosé		5.10
Vermouth Martini Rossi Sweet Red		4.85
Bols Cherry Brandy	} handy 3-pack	19.75
Bols Crème de Menthe		
Bols Advokaat		

The Naafi cheaper by the dozen terms offer a straight 12½ percent discount off the retail price when you buy twelve bottles or more in one purchase.

- two half bottles count as one bottle.
- if you draw spirits from a mess you can use the "cheaper by the dozen" terms to buy wines and liqueurs only. (prices correct at time of printing)

normal price less 5% discount	52.40
CHEAPER BY THE DOZEN TERMS	48.25
YOU SAVE	4.15

SLOT T.V. BY T.V. KAUFMIETE

**BRINGS WONDERFUL ENTERTAINMENT FOR
THE WHOLE FAMILY AERIALS AND TABLES
FREE IN OUR ALL INCLUSIVE PLAN**

- **Brand new T. V. Sets by Leading German Makers**
- **5 programme aerials for Dutch programmes**
- **Free prompt service**
- **British sales and technical personnel**
- **Pay as you view**
- **Big cash rebates twice a year. For your summer holidays and christmas**
- **Immediate Installation**

.....
**For further information complete this coupon and
send to: Forces Liaison Office, T. V. Kaufmiete,
4 Düsseldorf, Scheurenstr. 7. Telefon (0211) 12041**

NAME

ADDRESS

Personality of the Month



Miss Catherine Baillie, the new Chaplain's Assistant, was commissioned into the Irish Presbyterian Church as a deaconess in 1958 and seconded to the Royal Army Chaplains Department in 1966. In between commissioning and secondment Miss Baillie exercised office in an industrial Parish and in extending her Church's work in Belfast.

Her appointment is concerned directly in assisting with the spiritual and moral welfare of our women's services and our services families, although she in no way supplants the Padres' normal responsibilities or those of SSAFA. But her office excludes the celebration of Holy Communion or conducting a Marriage Service.

Unlike her predecessor, who was set up in the Church Centre, Miss Baillie is located in the Church Hall of St Andrews Church.

From an early age she developed an interest in the work of the Church and always wanted to be part of it. After training at St Colm's Missionary College, Edinburgh, from 1956-58, Catherine Baillie finally reached the threshold of her ambition.

Miss Baillie comes from a strong Service background. Her father served with the Royal Army Service Corps and her brother, the Rev. Fred Baillie, with the Royal Air Force, while others of her family have served in the Royal Ulster Rifles. Her home is in Belfast.

HISTORIC FAMILIES

Have a Family Plaque with your own Coat of Arms and name.

WALLSHIELDS 8" x 5 1/2"

PARCHMENTS 10" x 7"

DM 2.50 for packing and mailing.

Posting to your address in Germany, Canada or USA.

Miss D.M.V. COPE - No. 3 Civilian Mess, BFPO 40

RHEINDAHLEN FLOWER CLUB

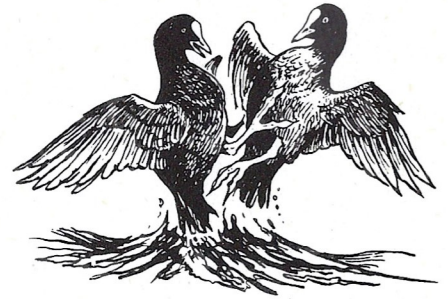
November 3rd in the Marlborough Club "Pink and Green" room. A practical lesson using dried and preserved materials as winter decoration for the home. We shall begin with a short lecture on how to use dried and preserved leaves, flowers, grasses, seed-heads and pods etc. Please bring with you a container of your choice, oasis, oasis holder, wire netting, flower scissors, flower wires, sellotape and dried materials. All these may be purchased from the Sales Table which opens at 2.00 p.m. and which has been replenished with a new stock of exciting materials. The advanced members will be willing to give help and advice to all who require it.

December 1st in the Marlborough Club Ballroom. Mrs. Lucy Hall will demonstrate how to make Nativity figures i.e. The Three Wise Men. These are fascinating creations which would be expensive to buy but which you can make with odd scraps. There will also be an "Exhibition of Christmas Decorations". Some of these will be for sale and all can be copied. Once more, the energetic committee members will be available to answer queries and give help and advice where needed. You may, if you wish, purchase materials from the Sales Table or bring them with you and make up your decorations during the afternoon or evening sessions.

To enable everyone to take advantage of this exhibition and demonstration on December 1st, we shall be open from 2.30-4.30 p.m. and again from 7.30-9.30 p.m. A nursery will be available for the November meeting and during the afternoon of December 1st.

Bird Spotter

COOT (*fulica atra*)



Sheets of water with reed beds and other cover attract the coot: flocks of them may be seen on the ponds behind Dundee Way. Sexes are alike, both being bigger and much stouter than the moorhen. Narrow white bar on wing in flight. Usual note a single loud creaking call resembling the perr-uck of the moorhen. Habits: rather squat tail-less shape on water, but looks quite elongated in flight owing to stretched legs. Feeds by diving, but comes to shore to graze. During the breeding season, there is plenty of evidence that this species, like the Great Crested Grebe, is troubled by carrion crows, for sucked egg shells are a common sight. The eggs are a light colour and easily seen from the air by the crows.

FIAT

AUSTIN

MORRIS



From the specialists for the Military

Rankins of Rheydt

407 Rheydt • 11 Limitenstr. • Tel. Rheydt 4 80 76

■ large stocks ■ best HP

Telephone for demonstration and information

We will call and see you



YOUTH CLUB GUIDE DOGS

Early in 1970 Rheindahlen Youth Club decided to buy a Guide Dog for a blind person and their efforts came to fruition in October of that year when a cheque for £250 was handed to The Bishop of Croydon, The Bishop to The Forces. This money which had been raised by organising dances, and members completing 1508 lengths of Rheindahlen swimming pool in a sponsored swim, bought Guide Dog Logan, pictured here. In 1971 the club again raised £250 for another Guide Dog, the cheque being accepted on behalf of The Guide Dog for The Blind Association by Group Captain Shephard, OBE MBIM.

Pure-bred, cross-bred or mongrel, any dog of the correct height, temperament and willingness to please can be accepted for training. Puppies are 'walked', that is placed with a normal family so that they may become familiar with the everyday sounds, sights and smells, for about ten months. They are then handed back to the Association and formal guide dog training begins. 'Halt', 'sit' and 'stay' become familiar commands and the animal becomes completely at ease in the harness. The dog is introduced to obstacles, then to traffic. It is taught that a moving vehicle within a certain area is a signal to either stop or refuse the command to go forward, and a stationary vehicle is a signal to proceed. This training takes about 16 weeks.

It should not surprise anyone that the cost to the Association of each unit of guide dog and owner is over £250. Owners are asked to pay what they can afford for their dogs. This payment, which may be as little as 25p ensures that the dog is theirs by right of purchase, not charity.

RHEINDAHLEN RAILWAY CIRCLE

The Rheindahlen Railway Circle held its first Annual General Meeting, on 24th September 1971. This meeting marked the culmination of a most successful year of existence.

Membership is now around the fifty mark and although the majority of members are from Rhine Area units and RAF stations Wildenrath and Bruggen, members correspond as far afield as Bielefeld, Fallingbostal, Osnabruck and Mulheim.

During last year some noteworthy activities included two visits to 79 Rly Sqn RCT, the latter one to enable the members of Monchengladbach Modell-Eisenbahn-Club to inspect the installa-

RHEINDAHLEN

tion, and visits to Monchengladbach and Neuss Loco sheds, Utrecht Railway Museum in the Netherlands, the "Bummel-Bimmel-Bahn" from Bad Neuenahr to Kreuznach in the Ahr Valley and Arsbeck Petrol Depot.

During the coming year a clubroom is to be located in a railway coach at RAF Wildenrath, after refurbishing by members. Working parties on the coach are to begin on Saturday 6th November. A formal opening of this coach is to be in 1972. This coach will forge a tangible link between the Rheindahlen Railway Circle and the Wildenrath Model Railway Club, which at present numbers about 20 members.

Anglo-German relations are enhanced by a regular exchange of visits and correspondence between the Circle and the Monchengladbach Modell-Eisenbahn-Club, which has some two dozen members in Monchengladbach and Rheydt.

A full Winter programme of events is planned, to include visits, talks, film and slide shows and, possibly, a Photographic Competition for members and their families. In addition to the renovation of the clubroom coach, families enjoy Social Evenings and many visits to museums and antiquities as well as keeping up with the latest trend in railways.

Although the Railway Circle has received a certain amount of publicity since its inception, there must still be a number of interested enthusiasts who might wish to join. The Hon Secretary is Sgt J. A. STANISTREET, RAOC, who may be contacted at 'C' Company, HQ Rheindahlen Garrison, BFPO 40 (RA 2026).

THAT SPITFIRE . . .

The Spitfire which formed the cover illustration of the September issue of the 'Bulletin' was of interest in its own right, besides being representative of the type which became so famous in the Battle of Britain, since it belonged to one of the shortest lived RAF Squadrons, Number 121.

121 Squadron was, in fact, the second of the three Eagle Squadrons, manned by American volunteer pilots, and formed at Kirton-in-Lindsey in May 1941. The Squadron first equipped with Hurricanes, but re-equipped with Spitfires before moving first to North Weald, then Rochford (Southend) and finally Debden. The cover picture shows a Mk. 5b aircraft, BM590, bearing the name 'Olga'.



ROUNDAABOUT

During its short life, the Squadron was mainly employed on East Coast patrols and Channel sweeps, with occasional ground-attack operations. It was also involved in the attacks on the two German pocket battleships Scharnhorst and Gneisenau during their dash up the English Channel in February 1942. Two pilots shared the first enemy aircraft contact, a Junkers 88 which was damaged in August 1941, and the first aircraft destroyed was unfortunately a Blenheim, mistaken for a Ju88.

The Unit Badge, approved by King George VI, emphasised the association with the United States, and depicted a Red Indian's head with headdress, the motto being 'For Liberty'.

121 Squadron transferred to the United States 8th Air Force on 29 September 1942, when it became No. 235 (Pursuit) Squadron at Debden.



Photograph by PI TWO ATAF

organisation of Rhine trips, outings to Nuremburg Ring, "Coffee and Coke" sessions at the U.S.O.C., the weekly Teenage Discotheques; and as U.S.O.C. committee member for the Teenagers has fought many a battle to ensure that the younger element of JHQ is adequately entertained.

Mrs Dray is leaving to join her husband, Col Rush Dray, RCT, in his new appointment at M.O.D. London and very best wishes and many thanks go with her from the Teenagers.

With reference to the article 'Nato Soldiers Support Charity Work' in last month's Rheindahlen Roundabout, it has been brought to our notice that half of the vehicles used were, in fact, supplied by 68 Squadron, RCT.

VISIT TO WATERLOO



The Meeting of Wellington and Blücher near La Belle Alliance.

On 14th September about 30 members of the Rheindahlen Historical Society (some young, and others not so young) met under 'Wellington's Tree' at the crossroads in Mont St Jean, under the leadership of Major Allen, RE.

The course of the day-long battle fought on Sunday, 16 June 1815, has been the subject of much research by many historians. It is therefore very well documented, but Major Allen brought the battle to life by his explanations on the ground, his interest in detail, and finally his successful effort in getting his audience to try to view the course of events through the eyes of one who had taken part. By the end of the day, the names of places — Hougoumont, La Belle Alliance, La Haye Saint, and others — were firmly fixed in their minds. The group were kept off the tourist route and found that Hougoumont has changed its name to Gomont and that nothing remained of the old farm, except for a small chapel which has been restored by regiments of the Brigade of Guards whose forebears had resisted all efforts to dislodge them from the farm during the battle.

Although the ground has changed in places, one could envisage the cloud in the woods that might have been Blücher — or who? The corn was neither high nor wet, but we could imagine men and horses fighting for their lives: harder to imagine was that so many had been engaged and had died in their thousands in so small an area.

Mont St Jean is now a tourist attraction with 'all the fun of the fair', but the view of the battle-field from the Lion Monument is worth the climb, as is a visit to the town of Waterloo itself where the British Council maintains a Museum which includes an excellent pictorial representation of the successive stages of the battle.

West Rhine Musical Society



Photograph by Cpl. Clark, RAFG PR.

First Night They laughed at the Queen of the Fairies! Grim-faced nail-biters in the male dressing room relaxed. The Producer tore up his suicide note. We need no longer lose sleep over how to return the money.

The audience, the most important part of the show — hitherto lacking — were in the House for the first time. And they laughed at the Queen of the Fairies! So the whole Company responded and shared the enjoyment of the show. Our many mistakes were forgiven. What we feared would be disaster turned out to be success.

The photographs show scenes from *Iolanthe* — presented in the Garrison Theatre by the West Rhine Musical Society with the Royal Artillery Mounted Band, Musical Director Captain George Evans.



Photograph by Cpl. Clark, RAFG PR.

RATS

RATS are now preparing a comedy, 'Nude with Violin' by Noël Coward, which goes on in the Garrison Theatre 17, 18, 19 and 20 November 1971. 'Nude with Violin' is thought by many to be one of Coward's most amusing plays and, if the success of 'Present Laughter', which was presented a year ago, is anything to go by, everyone is assured of a most enjoyable evening. The play is being produced by Barbara Jay, who will be remembered for 'The Iron Duchess' in 1968 and 'Open House' in 1969, and, of course, for the numerous parts she has played in other plays in the last three and a half years.

Why not make a note in your diary now for November and 'Nude with Violin'?

Love of Four Colonels

Before anyone thinks that the title "Love of Four Colonels" heralds an article on the more amorous activities of the HQBAOR higher echelons, let it be quickly said that this is the title of a 3-act play by Peter Ustinov which will open the Ariel Theatre Guild's 1971/72 season in the Rheindahlen Theatre. Set in post-war Germany, it tells the whimsical tale of an Englishman, a Frenchman, an American and a Russian — Colonels four — to say nothing of their wives and certain supernatural forces. No, not the Ministry of Defence but . . . but then, we will not disclose too much of the comic plot. Martin Wallace is directing a cast of 12 and he has assured Lord Longford and Mary Whitehouse that whatever may be happening on the West End stage, he will be insisting on at least 12 costumes! In fact no expense will be spared in providing a rich entertainment on the 8th, 9th, 10th and 11th December 1971 at 8.30 pm. Tickets at 4 DM and 3 DM will be obtainable from the Theatre Box Office (Ext 2262) which will be open from 1.30 to 5.30 pm Mondays to Fridays commencing Monday 29th November, and from 10.00 to 12.00 am on Saturday and Sunday, 4th and 5th December 1971.

The Ariel Theatre Guild meets regularly on Tuesday evenings in "The Little Hut" (off Queens Avenue) and extends a hearty welcome to anyone interested in the theatre, and particularly those able to assist in staging future productions. Bar facilities are provided and if your life isn't already full of drama, come along and join the fun!

SMALL ADS

DM 5 PER 4 LINES

WANTED — The Mathematics Department of Kent School require copies of WHICH? magazine for project work. Ring Hostert MII. 22.

WANTED Piano Lessons for 7 yr old girl. Anyone willing to oblige please contact Maj MW Newcombe Tel RA 2264 or 2685.

A PLAY GROUP for 3-5 year-old children has started at 11 Roberts Road, Rheindahlen. The group has many instructional toys and is conveniently situated near the playing field. For details of the few vacancies apply to Mrs. Allen, 11 Roberts Road, or Major Allen on RA 2151.

WANTED: Washing machine — preferably automatic. Also Dish washer and Deep-Freezer. Please contact Mrs. B. Jones, Ext. 4696.

MOBEL MUSTER LAGER



WHOLESALE FURNITURE

407 Rheydt - Mittelstr. 27

Tel. 021 66 / 48066 / 67

**COME TO BELGIAN CMC
WHERE WE PRESENT:**

An International Furniture Exhibition
by prominent producers

Free delivery and installation by experts

Service and advice by joiner and cabinet maker

Special Oriental carpet department with authenticity
certificate for each carpet

All prices are at unbeatable value
and value added tax is deducted

More information can be obtained from:
**Mr Hupez, Manager Belgian CMC 16,
Rheydt, Akazienstraße 5. Tel. 30140**

OPTIK - HILGER

Ophthalmic and dispensing

Contact lens specialist

English spoken

In Stock:

Latest fashioned style of frames
from well known firms in Europe

Zeiss — Marwitz + Hauser — Metzler
Christian Dior — Viennaline
Essel, Paris — Serge Kirchhofer, Vienna
Boutique Modells

Latest In Lenses

ZEISS Umbramatic

which change colour between 10-70 % automatically

Eyetest free of charge

After testing you may wait for your glasses

5144 Wegberg · Beecker Straße 26 · Tel. 21 59
405 Mönchengladbach · Neußer Straße 260 · Tel. 1 69 82

Christmas Toys for St. Josefsheim

At St Josef's Heim, Hardt, there are 240 mentally retarded children between the ages of 3 and 14. Each year we try to give them all toys for Christmas. In order to be able to do this we would be grateful for any surplus toys either in good condition, or repairable, which you may be able to spare.

The St Josef's Heim in Hardt caters solely for boys — there is a similar home in Bruggen for girls.

If you feel that you can help, please contact:

A. H. WILCOCK,
OFFICE EXTENSION 4261

or leave a message with the RAF Officer's Mess receptionist on extension 4297. I will then collect your offering.

If you have items suitable for girls I will also collect these and pass them to the SSAFA Welfare Organisation who will redistribute them.

New Unit for RAF Hospital Wegberg

On 6 October 1971 a new intensive care unit opened at RAF Hospital Wegberg initially for a 6 month trial period. This unit, designed primarily for patients who need almost continuous attention, will contain much specialised monitoring equipment necessary for the treatment of such patients.

Although the new unit will be under the administrative control of the Consultant Anaesthetist at Wegberg, any of the hospital

consultants will admit to the unit those patients considered likely to benefit from the specialised care and attention available there. In the opinion of the staff at RAF Hospital Wegberg this new unit will make a vital and lasting contribution to their aim of continuously improving their facilities and standards of patient care.

R.A.F. Rheindahlen Wives Club

The Wives Club had a very successful outing to Amsterdam on 29th September, when they visited the Heineken Brewery in the morning and explored the city afterwards.

November has three Wives Club meetings: 1st, 18th and 29th.

Monday, 1st November will be an AT HOME evening. It is hoped Mrs. McCulloch will bring her wood carvings (excellent Christmas gifts) to show us, followed by a Whist drive with prizes and a Bingo raffle.

Monday, 15th November will be a Sale of Work. There will be stalls for knitting and needlework, Christmas decorations, home baking, toys and bottles, so bring your contributions early and win a prize.

Monday, 29th November will be the Annual General Meeting, so come and nominate your choice for a new Committee to organise the club's future activities. Bingo, a snowball, raffles and refreshments will follow the meeting.

Transport: a bus will call at Dorthausen at 7.30 p.m.
St. Andrews 7.50 p.m.
St. Christophers 7.55 p.m.
and will return at approximately 10.30 p.m.

Don't say
farewell
cruel world



Make your life worthwhile and buy a reliable

SECOND HAND CAR from



MÖNCHENGLADBACH
BURGGRAFENSTR. 55
PHONE (02161) 31166

All cars are BFG Road tested and garage maintained.
Reasonable Hire Purchase Terms provided.
Free demonstration or free transport to and from garage.
Also large selection of cars for hire.

For further details please phone our representative Herr Lehmann on MG 3 11 66

SAY IT WITH FLOWERS

from your Florist

BLUMEN — MENKE

Wedding Bouquets — Floral Sprays

Wreaths — Fresh Flowers daily

Delivery within the camp and to Wegberg Hospital

Tel. M.Gl. 5 96 15

AGENT FOR INTERFLORA.

Figaro Albert Penatzer

Ladies and Gents Hair Dressing Salons also Manicures

JHQ Shopping Centre — Tel. M.Gladb. 5 95 68

S.West Extension, Cambridge Drive — Tel. 5 87 38

900-1800 hrs daily except Monday



AUSTIN · MORRIS
MG · TRIUMPH

SERVICE · REPAIRS · SPARE PARTS
AND SPECIAL ACCESSORIES

J. MASSIER

405 Mönchengladbach

Künkelstraße 125 - (B 57) - Tel. 221 16

RENAULT

SAAB

CHRYSLER

Order your new car direct from the factory. Only 15%
deposit if you are a Cpl or above.

DELIVERY FROM STOCK!

Local Factory Agent:

MIKE CRISP.

4050 Mönchengladbach-Hardt

Vorster Straße 522 · Tel. MG Civil (02161) 59396

I visit JHQ NAAFI on Thursday afternoons and
Saturday mornings.

新華酒家

Chinese Restaurant

for good Chinese food, atmosphere and price

Lichthof 4 Mönchengladbach

Open daily 12.00 — 15.00 and 17.00 — 23.30

All
prices
tax free

PSI SHOP

SHQ RAF RHEINDAHLEN

Open
to
entitled personnel only

TV, RADIO, Car Radio, Stereo and Audio Equip-
ment, Swiss and Japanese Watches, Cameras and
Projectors. Camping Goods, Garden Furniture Etc.
A few "Special Offer" Tents still available. Large
range of good quality inexpensive sleeping bags.



Collecting Decorations and Medals

This month I propose to describe the Queen's South Africa Medal (illustrated), which was awarded for service during the South African War 1899-1902. It is still to be seen on the chests of a very few old soldiers, most of whom are now well into their eighties. A total of twenty-six bars, or clasps, were awarded with this medal, of which the rarer ones are "Defence of Maf-

king", "Wepener", "Rhodesia" and, as a single bar "Defence of Kimberley". To maintain the "status quo", a number of State bars were awarded to those who did not see action in any specific battles of the war. These are: "Cape Colony", "Natal", "Transvaal", "Orange Free State" and "Rhodesia". There were also two "Date" bars: "South Africa 1901" and "South Africa 1902". Some 2,706 of these medals were given without bars to Nursing Sisters. So many of these medals were awarded and are still to be found by the collector in great numbers, that their value is quite low, unless possessing one of the four rare bars mentioned above. However, it is a medal which has lent itself notoriously to the attentions of forgers. I have in my possession a QSA Medal which has not only a forged bar "Orange River Colony" but also a forged name on the rim! It is, of course, quite worthless. The QSA Medal could be awarded to the Royal Navy and is sometimes seen paired with the China Medal 1900, although the Navy was relatively thinly represented compared with the land forces. A comprehensive list of those units which received the QSA Medal is to be found in "British Battles and Medals" by LL Gordon, a copy of which is held in the Command Lending Library. This book has recently been revised and reprinted. An interesting variation of this medal was given to troops garrisoning the Mediterranean during the war and this medal has the word "Mediterranean" on the reverse, instead of "South Africa". When the war began, it was thought that it would be over in twelve months and the original die for the reverse contained the dates "1899-1900". However, when the war dragged on, these dates were erased and only a few of the dated ones were issued, to Lord Strathcona's Horse. These are rare and valuable. Another slight variation is to be found also; on some medals' reverse Britannia's hand is pointing to the 'R' and on others, to the 'F' of "AFRICA". The medal was issued in silver and bronze.

QSA Medal reproduced by kind permission of Major A. M. McFarlane, RA. Photograph by P. D. Griffiths.

Everything is changing...



Finance also has become more modern and adaptable. Services are more varied, advisory services more comprehensive, which we can offer you as a modern major bank. That means:

- opening a current-account or a savings-account
- payments by means of bankers' transfers
- expert advice on all questions of profitable capital investment
- and last not least: personal and courteous service



COMMERZBANK

Mönchengladbach - Königsstraße 2

Branches: Hauptbahnhof, Humboldtstraße 6

Rheindahlen 1, Plektrudisstr. 15 - Rheindahlen 2, Headquarter
RAF Wildenrath B.F.P.O. 42 - RAF Hospital Wegberg B.F.P.O. 40

STOP!

LOOKING for a gift or souvenir?

Come and look round our newly extended gift department – and view our large selection of Hummel and Dresden China.

Gifts and souvenirs for all tastes. We specialize in Black Forest Cuckoo Clocks.

Also a very wide selection in all Leather Goods.

Special offers in toys still available.

WILHELM SCHMITZ

THE CORNER SHOP

Phone 59610

Your  Station

Günther Schwarz

Mönchengladbach - Hardt

Vorster Straße 327 · Tel. 5 92 80

COMPLETE UNDERSEALING (Duralife Longtime)

CAR WASHING – POLISHING

OIL CHANGE – GREASING

TYRE TESTING & RENEWALS

All the above services are carried out at very reasonable prices

**BMC
LANCIA
INSURANCE & CAR FINANCE**

up to 20 % NATO Discount given to Forces and Sponsored Civilians on all makes represented by us.

Call on us to-day for any information you require.

Our showrooms are in the JHQ Shopping Centre, opposite the BP Petrol Station, Tel. 021 61 / 593 26 within easy reach of anyone stationed or visiting the JHQ area.

Not only do you buy your car from us but you avail yourself at the same time of our excellent After Sales Service.

HP can be arranged for periods of up to 36 months. We can also supply you with immediate insurance cover for your new or used car.

KREMER Automobile

JHQ SHOPPING CENTRE

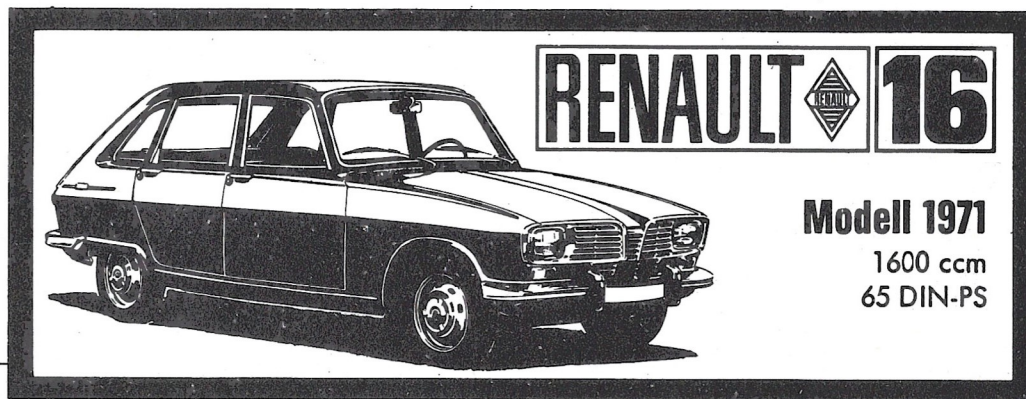
TEL.: MÖNCHENGLADBACH 5 93 26

**Autohaus
BONGARTZ**

Waldniel

Ungerather Straße 60

Telefon Amern 4135



**Customer Service
and Sales
Repairs**

Most people buy the Renault 16, because it is so modern - then they find out it's so safe!

We recommend that you have a testdrive.

The Merkstein Jam Butty Weekend



"Let's have a Group Camp", he said with the decisiveness of a born Group Scout Leader. So we did.

On the Friday evening, having thoroughly surveyed the Merkstein countryside, i. e. got lost, the bus load of Scouts and the equipment lorry eventually found the site. Gear was soon unloaded and 1½ hours later four 160 lb tents had been erected in the dark. The boys now realised why they were expected to tie their knots with their eyes closed. After claiming bedspaces and sorting personal kit, famishment took over and the supper prepared by the Scouters disappeared rapidly. Some boys were disappointed to discover washing facilities were available, although one Scout did not find the wash-basins until Saturday midday! "Lights Out" was 2300 hrs, but "mouths shut" was not to be for some time afterwards. The temperature dropped to near zero.

On Saturday morning two more tents went up, and by the time the excited Cubs staggered up the track with their kit, all was ready. The younger boys were helped to their tents and then Patrols were made up — 4 Scouts and 4 Cubs in each. Cooking equipment was issued, together with ingredients for the first Patrol-prepared meal.

Everyone refuelled, the afternoon's activities got under way. Six bases provided variety and interest for all: the Cliff Scramble sorted out the athletes from the intellectuals; Crossing the River 'killed off' a number of boys and introduced the lighter ones to vertical take-off when Monty demonstrated his solution to the problem. Ian managed to strain a leg whilst sitting down watching his Patrol

at work; Throwing the Thingummy was easy for those brought up on Scots Porage; the Sightless String Stumblings discovered the confident Patrol Leaders and which Patrols had confidence in their Leaders; whilst Judy's Triple Tree Twiddlings resulted in some intriguing camp gadgets and only one cut finger.

Tea next, the jam butties vanishing considerably faster than they had been produced, and then bivouac making was announced as the second activity of the afternoon. As always with this project, some boys found out how sharp ferns could be. It was probably fortunate that the threatened bucket of water test was not carried out on a number of bivvies, as it could be considered a fair probability that liquid was likely to penetrate some of the gaping holes in the constructions.

Steak and chips made up the menu for supper and the boys were very pleased with their culinary efforts. The traditional campfire allowed everyone to be as daft as he wished, and brought the day to an end for the Cubs. Some of the Scouts sat around the dying fire, gazing into the glowing embers and experiencing that wonderful feeling of being alone with one's thoughts at the end of a hectic and tiring day. However, their day was not yet over as 'Operation Radiac' kept them busy for another hour. One boy was not too successful at this night wide-game as he spent more time in captivity than he did on active service. A mug of cocoa revived the Scouts sufficiently for them to reach their tents to collapse into instant oblivion.

The Cub first-nighters were up before dawn as usual, but the rest of the camp was not so eager to awake. With their vast experience of one days' cooking, the boys managed the breakfast of eggs and sausages by themselves, and the morning began with a short Scouts' Own and inspection. Pioneering was the activity for the Scouts and a nature walk for the Cubs. The rope bridge presented few problems but the aerial runway nearly brought disaster to one Cub and heart failure to two Scouters. All turned out well after slowing down the run and the project proved quite popular — the aerialists ending up with sand in every part of their clothing, to say nothing of their ears, mouths, and hair. The map-making task running concurrently was not greeted with much enthusiasm, but lunch of turkey, spuds, carrots, and beans went down very well.

The weekend was now coming to an end and the afternoon was taken up with dropping tents, packing kit, and cleaning the site. Tea was prepared by the Scouters whilst the camp was being struck and after all the boys had completed their supervised scrub, they tucked into — would you believe — jam butties! Flag down vehicles loaded, and that was that. The members of the Rhinos, Hells Angels, Never Readies, Red Devils, Beavers, and Platypus Patrols headed for home, all having had a most enjoyable time in glorious weather, all having learnt a great deal, and all looking forward to the next Merkstein Jam Butty Weekend.

Postscript; one Scout was overheard complaining about "those perishing Cubs". He had come up from the Pack three days previously!

THE RHEINDAHLEN HISTORICAL SOCIETY

The next two meetings of the Society are planned as follows: Thursday, 18th November — Mr. J. Hunt, Command Librarian "The Literature of Military History" with an exhibition of books 8.30 p.m. in the Blue Pool Restaurant. Thursday 16th December — Sqn Ldr Chivers RAF Bruggen "The Road to War 1900—1919" 8.30 p.m. in the Blue Pool Restaurant. Further details about membership etc. may be obtained from the Hon. Secretary Captain D. Eldred, RAEC, Edn Branch, HQ, BAOR, BFPO 40. Tel: RA 2793.

UNITED SERVICES OFFICERS' CLUB

The Annual General Meeting is to take place at the Officers' Club on Thursday 2nd December 1971. Tea will be served at 1700 hrs. The meeting is due to commence at 1715 hrs. Members of the USOC are asked to make a special effort to attend this meeting.

D.O.E. WIVES' CLUB

A Bring-and-Buy Sale in aid of the children's Christmas Party will be held in St. Andrew's Church Hall at 10. a.m. on Wednesday, 10th November 1971. Please give this your generous support.

ST. PATRICK'S CHRISTMAS FAYRE

Back to School? On a Saturday? Yes, willingly — because it's St. Patrick's School Christmas Fair; on Saturday 27th November. Make a note in your diary to turn up in strength, at 2.15 p.m. (with some money). There'll be stalls, games of chance, refreshments, and even a creche for leaving little 'uns in; the organizers look forward to seeing you. Proceeds to charity and the School funds.

MAH JONG

Have you played Mah Jong? If you have, or if you have not and would like to learn, a friendly and relaxed group play this fascinating game on a Tuesday afternoon in the USOC from 1400 hrs. Do come along and join us, you will be made very welcome.

STOP PRESS

LADIES COFFEE MORNING

The next Coffee morning for wives of members of the RAF Officers' Mess will be on Friday, 26th November, at 10.30 in the Ladies room. As this will be the last meeting before the New Year we look forward to seeing as many ladies as possible, and particularly those who have recently arrived at Rheindahlen.

GUY FAWKES CELEBRATIONS

The combined Army/RAF bonfire and firework display will take place on Friday 5th November at the SW corner of the Golf Course, off Moore Road. All are welcome. The bonfire will be lit at 1815 hrs, with the fireworks starting immediately the fire has taken hold. Refreshments will be available for the children and the fireworks display will be of a not too explosive nature. Please remember that there are restrictions on bonfires and the use of pyrotechnics and that this fire and display is to obviate the need for individual efforts. Please also take extra care of your household pets; do not bring dogs to the bonfire and do not expose them to unnecessary suffering which the noise of the fireworks causes them.

R.A.F. THRIFT SHOP RHEINDAHLEN

Customers are urgently requested to collect all money outstanding.

DECORATIONS FOR FORMAL AND INFORMAL FUNCTIONS

The members of the Rheindahlen Flower Club are available to decorate for all functions, large or small. They give their time willingly and freely. A charge of 20% of the cost of the flowers is made to enable the Club to pay the air fare of professional demonstrators from England. For further details ring Mrs. Charles, RA 4706.

THE SAINT BONIFACE SOCIETY

You are invited to attend a series of films and discussions which will take place in the Church Centre, Trenchard Road, Rheindahlen at 8.15 p.m. on alternate Tuesdays. The programme for November is as follows: **2nd November** "Can Man Survive? God and the Environment" — talk followed by a discussion. **16th November** "Christian Unity" — a discussion with a Panel. **30th November** "Christian Aid" — a film 'The Vicious Spiral' followed by a discussion and Bread and Cheese Supper.

INTERNATIONAL LADIES CLUB

The International Ladies Club November tea will be held at the U.S.O.C. at 2.15 p.m. on Tuesday November 23rd. The host nation this month will be the Netherlands and their entertainment will comprise of films and exhibition of Dutch China. Raffles and nursery as usual.

SCHOOL LUNCH SUPERVISORS

Queen's and Kent Schools urgently require lunch-time supervisors. Any parents who are willing to assist, even temporarily, please contact the appropriate school or 6 P.C.L.U. for further details of pay etc.

THE MONDAY CLUB

The Monday Club has restarted and meets in the Church Centre on Monday evenings at 8. p.m. The November meetings will be on the 1st, 8th and 22nd, and all ladies will be welcome. There will be a subscription of 1 DM.

RHEINDAHLEN SADDLE CLUB

Adult Beginners' Classes have now restarted at the Saddle Club. Anyone interested, please contact Major P. Gallard on RA 2431.

CINEMA PROGRAMMES

GLOBE CINEMA — NOVEMBER

Performances at 1800 and 2030 hrs. unless otherwise stated

- | | |
|--------|--|
| 1 | SMOKE — Earl Holliman (at 2030 hrs only) |
| 2 | THE SECRET OF SANTA VITTORIA — Anthony Quinn |
| 3, 4 | THE VAMPIRE LOVERS — Ingrid Pitt, Peter Cushing |
| 5, 6 | MARNIE — Tippi Hendron, Sean Connery |
| 7 | MY DOG THE THIEF — Dwayne Hickman (at 1430 & 1800 hrs) |
| 7 | WALTZ OF THE TOREADORS — Peter Sellers (at 2030 hrs) |
| 8 | THE RARE BREED — James Stewart (at 1800 hrs) |
| 8 | THE TORN CURTAIN — Paul Newman (at 2030 hrs) |
| 9 | THE OUT-OF-TOWNERS — Jack Lemmon (at 1800 hrs) |
| 9 | I'LL NEVER FORGET WHAT'S 'IS NAME — (at 2030 hrs) |
| 10 | INCIDENT AT PHANTOM HILL — Robert Fuller (at 1800 hrs) |
| 10 | THE KILLERS — Lee Marvin (at 2030 hrs) |
| 11 | THE GAMES — Michael Crawford (at 1800 hrs) |
| 11 | THE WILD AND THE WILLING — Paul Rogers (at 2030 hrs) |
| 12 | WAR WAGON — John Wayne (at 1800 hrs) |
| 12 | THE NIGHT WALKER — Robert Taylor (at 2030 hrs) |
| 13 | RIDE A NORTHBOUND HORSE — Michael Shea (at 1800 hrs) |
| 13 | THIS SPORTING LIFE — Richard Harris (at 2030 hrs) |
| 14, 15 | YOU CAN'T WIN 'EM ALL — Tony Curtis, Charles Bronson |
| 16, 17 | WEST SIDE STORY — Natalie Wood (at 1900 hrs only) |
| 18 | KILLING OF SISTER GEORGE — Beryl Reid, Carole Browne |
| 19, 20 | THE SMASHING BIRD I USED TO KNOW — Renee Asherson |
| 21, 22 | DARLING LILLI — Julie Andrews, Rock Hudson |
| 23 | ALL THE WAY UP — Warren Mitchell |
| 34 | THE MAN WHO HAUNTED HIMSELF — Roger Moore |
| 25 | MY SIDE OF THE MOUNTAIN — Teddy Eccles |
| 26, 27 | CHARLIE BUBBLES — Albert Finney, Colin Blakely |
| 28, 29 | FROM RUSSIA WITH LOVE — Sean Connery |
| 30 | ON HER MAJESTY'S SECRET SERVICE — George Lazenby |

U
AA
X
X
X
U
X
U
A
U
X
U
A
U
X
A
X
X
X
U
AA
AA
U
X
A
A

MATINEE

- | | |
|----|---|
| 6 | SAGA OF HEMP BROWN — (at 1030 hrs) |
| 6 | DAVID COPPERFIELD — (at 1430 hrs) |
| 13 | RIDE A NORTHBOUND HORSE — (at 14.30 hrs) |
| 20 | DAY THE EARTH STOOD STILL — (at 1030 hrs) |
| 20 | FUNNY GIRL (at 1430 hrs) |

U
U
U
U
U

ASTRA CINEMA — NOVEMBER

Performances at 1800 and 2030 hrs. unless otherwise stated

- | | |
|--------|---|
| 1 | THE GREAT BANK ROBBERY — Zero Mostel |
| 2 | RUN ON GOLD — Richard Crenna, Anne Heywood |
| 3 | JOHN AND MARY — Mia Farrow, Dustin Hoffman |
| 4 | KHARTOUM — Charlton Heston, Laurence Olivier |
| 5, 6 | THERE'S A GIRL IN MY SOUP — Peter Sellers |
| 7, 8 | DJANGO KILL — Tomas Milian, Marilu Tolo |
| 9 | MACHINE GUN McCAIN — John Cassavetes, Britt Ekland |
| 10, 11 | PATTON: LUST FOR GLORY — George C. Scott |
| 12, 13 | LOOT — Richard Attenborough, Lee Remick |
| 14, 15 | 55 DAYS AT PEKING — Charlton Heston (at 1900 hrs only) |
| 16 | NED KELLY — Mick Jagger, Allen Bickford |
| 17 | DRACULA IS RISEN FROM THE GRAVE — Christopher Lee |
| 18 | GIGI — Leslie Caron, Maurice Chevalier |
| 19, 20 | THE RAGING MOON — Malcolm McDowell, Nanette Newman |
| 21, 22 | EL CID — Charlton Heston, Sophia Loren (at 1900 hrs only) |
| 23 | TELL THEM WILLIE BOY IS HERE — Robert Redford |
| 24 | TODAY IT'S ME — TOMORROW YOU — Brett Halsey |
| 25 | THE LAST GRENADE — Stanley Baker, Alex Cord |
| 26, 27 | 10 RILLINGTON PLACE — Richard Attenborough |
| 28, 29 | THE IPCRESS FILE — Michael Caine |
| 30 | WOMEN IN LOVE — Alan Bates, Oliver Reed |

U
A
AA
U
X
X
X
X
A
X
U
X
AA
X
A
AA
U
A
X
A
X
A
X

MATINEE

- | | |
|----|--|
| 7 | SERGEANTS 3 — Frank Sinatra (at 14.30 hrs) |
| 13 | SERGEANTS 3 — Frank Sinatra (at 10.30 hrs) |
| 27 | GREAT MIKE — Marian Martin (at 10.30 hrs) |
| 27 | THE LOVE BUG — Dean Jones (at 14.30 hrs) |

U
U
U
U

POLICIES AND GREEN CARDS

FROM

ELLEN CULPECK

CAMBRIDGE DRIVE (ADJOINING FIGARO'S)
SOUTH WEST EXTENSION

OPENING HOURS: MONDAY TO FRIDAY 1000 — 1800 HRS
SATURDAY 1000 — 1300 HRS

TEL. M.G. 59655

ELLEN CULPECK — FORCES INSURANCE BROKERS
CAR — CARAVAN — TRAILER — MOTOR CYCLE — MOPED
BAGGAGE — HOLIDAY SICKNESS — TOURING — HOUSE-
HOLD-HUNTING — LIABILITY INSURANCE

French Restaurant St Vith

Moenchengladbach, Alter Markt 6, Tel. MG civ. 16424

Come to visit us and try our
French Specialities and Wines

We offer a first class service
and superb cuisine in historic surroundings.

OPEN ALL DAY THROUGHOUT THE WEEK
SATURDAYS FROM 18 HRS ONLY