

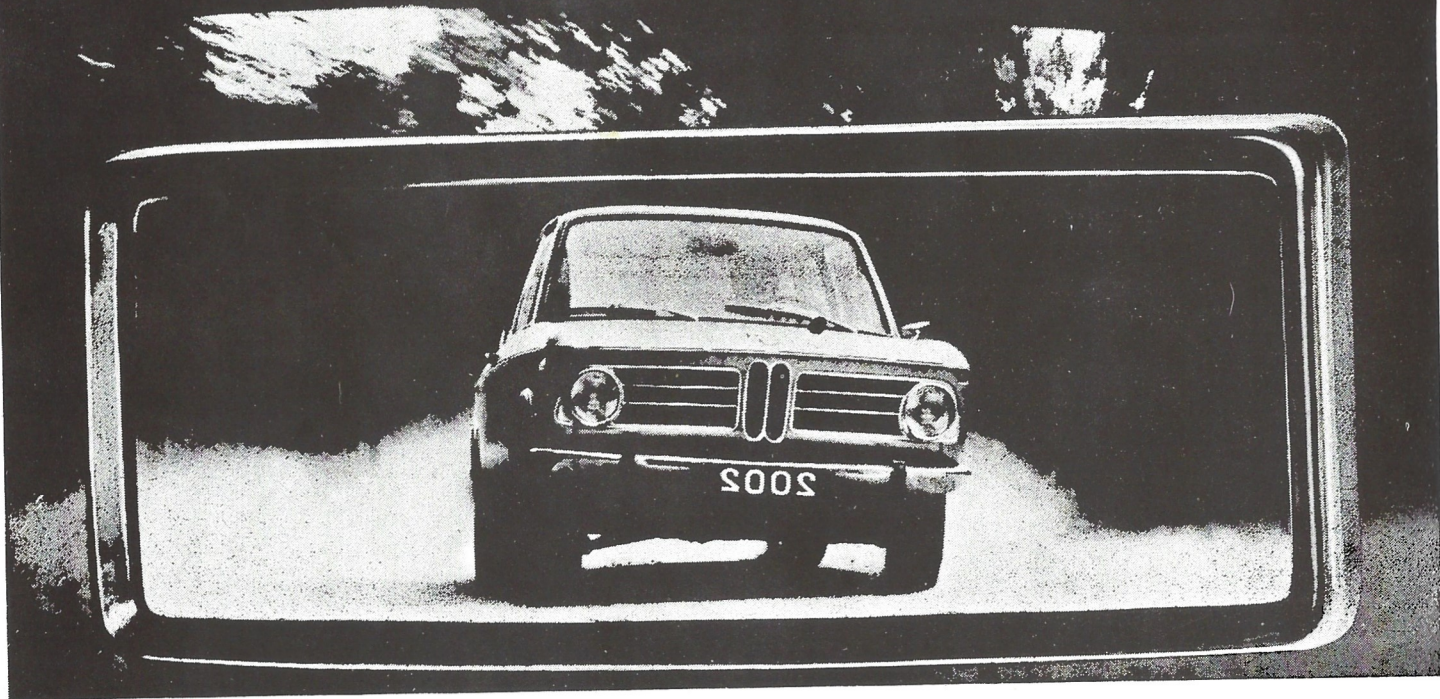
# The Rheindahlen Bulletin



No. 11

May 1971

# The 113 mph 5 Seater Sports Coupé

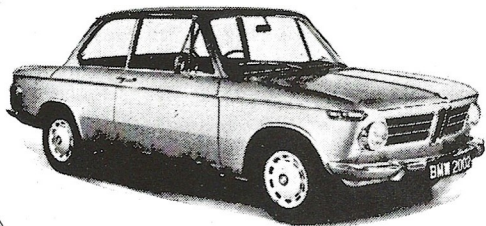


## move over... GOOD NEWS TRAVELS FAST

**GREAT NEWS** for every British serviceman who is . . . will be . . . or has been serving in H.M. Forces overseas. Despite all the recent taxes and revaluation you can own a BMW of your choice and save from £759 to over £2,100 on U.K. prices. In some cases nearly half price! Every one of these superb 'family saloons with sports car performance' is built to im-

pressive safety standards with reserves of speed and acceleration to ensure complete mastery of any traffic situation; each is the ideal choice for both town and motorway driving. Compare BMW performance with competitive marques and you'll find that BMW is the leader—every time.

*Other models include: 108mph BMW 2000 · 121mph BMW 2500  
125 mph BMW 2800 · 130mph BMW 2800 c.s.*



# 2002

To: BMW Concessionaires GB Limited  
BFG Information Office, 4930 Detmold-Brokhäusen, Oberngarten 2  
Tel.: Detmold 81997 \*FW

Please send me details of the BMW range, my special privileges, and the name of my BMW Great Britain representative for British Forces in Germany.  
See Rod Jones at the NAAFI Saturdays 10.30-1.30

Name

Address

Telephone

# Editorial

We are more than pleased to devote our front page to SSAFA this month. It is an organisation whose main purpose is to help us; like motor insurance it is one of those things you hope you will never need, but thousands do, every year. The annual fund-raising flag week in the Rheindahlen area is from Monday 10th May to Saturday 15th May. The association relies on your support — give as generously as you can for one day you or your friends may need their help.



## WHAT DOES IT DO?

### SSAFA (In UK)

Supplies temporary financial help to those in trouble whose needs are not met by the state

Supplies clothing to families in need

Advises on all problems

Finds cases and administers grants for other service funds

Advises and helps to solve family problems at home for men serving overseas.

### SSAFA (Overseas)

**Sisters.** SSAFA Nursing Sisters provide the services which are given by the Health Visitors and District Nurses in UK

**Social Workers.** SSAFA Welfare Officers give help and advice in marital and other problems

Arranges for short term fostering of children or provision of Home Helps in cases of emergency.

**Fund Raising.** This is one of the many tasks carried out by the local committees

Acts in liaison with SSAFA in UK in helping relatives who may be ill or in need



Recently SSAFA held a poster competition through out Germany. Above is the winning entry in the Adult Section submitted by Mrs. G. L. Verran and, the poster by, left, Jan Sinclair of Queen's School who won the Junior Section.

EDITOR: Mrs P. Lloyd (Ext 4720)  
ASSISTANT EDITORS: Mrs S. Furlong (Ext 3297), Mrs R. Grafton,  
Mrs L. Mears (M.G. 59937) Mrs S. Ball (Ext 4639) \*FW  
BUSINESS MANAGER: Fit Lt P. Storey (Ext 4226)

SERVICE ADVISORS TO THE EDITORS: Major H. Hopkin (Ext 3279), Sqn Ldr D. Headland (Ext 4748)  
ADVERTISING MANAGER: Sqn Ldr K. Booth (Ext 4449)  
PRINTER: Fritz Ecken, 4056 Schwalmtal 1

**ALL CONTRIBUTIONS TO THE MAGAZINE MUST BE RECEIVED BY THE 10TH MAY FOR THE JUNE EDITION.** They should be sent to the Editor, Rheindahlen Bulletin, RAF Rheindahlen, B.F.P.O. 40.

The material in this magazine is copyright reserved and should not be reproduced without permission.

Front Cover: RAF Hospital Wegberg, Photograph by Cpl DUNN.

# Royal Air Force Hospital Wegberg

The front cover picture of this issue of the Rheindahlen Bulletin depicts an aerial view of the Royal Air Force Hospital at Wegberg. One of the largest in the Royal Air Force, it is the only RAF hospital in Germany. I have never seen a hospital, military or civilian, built to the same plan — two halves of a wheel joined in the main by wide corridors with subsidiary corridors forming the spokes of the wheels. The great width of the main corridors permits their use as emergency wards should we ever have to expand to our crisis bed state.

The hospital was planned and erected in five months from January to the end of May 1953. Work actually started on the foundations in February 1953, so it was in fact built in three months and work continued for 24 hours out of each 24 by the light of flood-lamps. It was equipped, between June and October 1953, mainly by the transfer of equipment from the RAF hospital at Rinteln which was then to be given up by the Royal Air Force, and a total of 62 rail vanloads were received at the railway station at Wegberg. Thirty vehicles ran a shuttle service from the railway station to the hospital.

Lady Foster, the wife of the then Commander-in-Chief of the Second Tactical Air Force, opened the hospital officially at a ceremony on 16th November 1953, and Marshal of the Royal Air Force Sir John and Lady Slessor, Air Marshal Sir James Kilpatrick who was the Director General of RAF Medical Services, and Air Commandant Dame Roberta White, the Matron-in-Chief of Princess Mary's Royal Air Force Nursing Service, were present at the ceremony.

At first, the hospital was equipped with 300 beds, but these were reduced between 1953 and 1959 to 175 beds and raised again to 260 beds in January 1960. Today, we run at 276 equipped beds but are established for only 220 beds, upon which number our nursing staff is scaled. Of these beds, we have 95 for Servicemen, 12 for officers and the rest for Service dependants, Servicewomen and children.

Occupation of the 300 beds in the early days ran at an average of 125 patients per day. The peak year for admissions was 1964 when 197 patients occupied beds on one day in February of that year and 168 babies were born during the same month. In 1969, average in-patients per day numbered 155 and an average of 87 babies were born per month, or over 1000 in the year. Last year, the average bed occupancy was slightly lower and we just failed to reach our "target" of 1000 births by 37! Since the hospital's catchment area is so large, catering as it does for all Service personnel and their dependants west of the Rhine and in Holland and Belgium, or some 50,000 persons comparable to a town the size of Guildford and larger than Aldershot, it can certainly be classed as a busy general hospital and the following few details of some of the work carried out may quantify this assertion.

Our Pathology Department carries out some 7000 tests and the X-Ray Department about 1600 examinations each month. The Physiotherapy Department, to which is attached a hydrotherapy

pool, treats around 2000 patients a month. In the region of 27,000 outpatients are seen each year and nearly 6000 operations are carried out in the same period. Patients are referred to the hospital through our colleagues who work as general practitioner medical officers on the RAF stations or in the Army Medical Centres.

For overall administration the hospital is commanded by a Group Captain medical officer, with a Wing Commander medical officer as Registrar. Senior and junior administrative officers; an accountant officer and an officer in charge of clerical services, both members of the WRAF; a catering officer and a very recent arrival, the hospital Padre, and a hospital supplies officer who is responsible for obtaining all drugs, dressings, instruments and barrack stores, complete the administrative cadre.

All in all, there is a commissioned staff of 84, of whom 51 are Nursing Officers of Princess Mary's Royal Air Force Nursing Service, headed by a Senior Matron who is a Wing Officer and a Squadron Officer Deputy and Training Matron. There are 7 other Squadron Officers in nursing charge of wards and operating theatres and the rest are in the rank of Flight Officer or Flying Officer.

On the clinical side, the hospital is divided into Specialist Divisions. Each major specialist division, Surgery, Medicine, Specialist Dentistry, Anaesthetics, Pathology and Obstetrics and Gynaecology, is headed by a medical officer of Consultant status and the other divisions and departments by Senior Specialists. Consultants in the Royal Air Force are all very experienced doctors who have obtained the higher qualifications required for recognition as such by examination and who have been accepted by a Consultants Board upon which sit senior Service Consultants and

their civilian counterparts, who ensure that they have the necessary experience. It is true to say that Royal Air Force medicine today is, in many ways, superior to that provided by comparable civilian hospitals for the clinical experience of the doctors and the standard of nursing care provided by the PMRAFNS are second to none. Further, the number of staff, nurses and technicians, is more generous than can be found at similar hospitals in the National Health Service, and our waiting lists for outpatient appointments and admissions are negligible.

The rest of the skilled staff of the hospital is mainly of NCO rank, for they are specialists in their trades, serving as Nurses, Dental and Operating Room Technicians, Radiographers, Dispensers, Physiotherapists and Remedial Gymnasts, and in the trade of Medical Secretarial and the like. Further backing is provided by MT drivers, Accountant and Catering personnel, Suppliers and Electricians and quite a large number of dependants and German civilians who work as Nurses, Secretaries and Typists, Cleaners and Ward Domestics, Gardeners, Cooks, etc. The total staff is in the region of 290 Service personnel and 250 civilians and working dependants and, when all dependants are added, the Wegberg



"In the midst of ferocity healing"

Family adds up to some 1000 persons.

Besides the primary task of treating our patients, we also provide training for the PMRAFNS (Non-commissioned Element) which prepares candidates for State Nurse Registration (SRN) and for State Enrolled Nurse qualification (SEN), and there are 62 students and pupils on these courses at the present time.

Proposed innovations and transformations within the hospital complex consist of an extension to the Pathology Laboratory to house new and sophisticated equipment; two new blocks of sleeping accommodation, one for airmen and the other for trainees, and the provision of an Intensive Care Unit for the treatment of the most seriously ill cases.

Hospital life is not all hard work and sport is not neglected. For such a small unit there is considerable ability and interest in most of the major sports. Though unlikely to be in a position to win many inter-station trophies, the hospital turns out keen and enthusiastic representative teams for Rugby, Soccer, Cricket, Tennis and Squash for the RAF Germany competitions, and for Hockey, Netball, Swimming, Tennis, Squash and Athletics for competitions for the WRAF. We do hold the Inter-Station WRAF Tennis Trophy and the HQ Unit Rheindahlen Inter-Section Soccer Trophy and we also managed to win the RAF Germany Dining Hall Competition 1970. The main restraint to our sporting activities, apart from lack of numbers, is our inability to ensure that all members of a team can be released from their shift duties to practise and play in matches.

The aim and object of the hospital is to provide efficient diagnosis and treatment of our patients in as pleasant surroundings as possible and in a friendly atmosphere, and we hope that we live up to our aim.

J M F.

## West Rhine Music Society

Readers who have recently arrived may not know that Rheindahlen has a thriving and lively amateur company which enjoys quite a reputation among both service people and German nationals. Some of its successful productions have been: — The Mikado, HMS Pinafore, La Belle Helene, Die Fledermaus, Orpheus in the Underworld and The Gondoliers.

On May 12th, 13th, 14th and 15th the Society will present "The White Horse Inn", a musical comedy by Ralph Benatzky with songs by Robert Stolz. This musical took London by storm in 1931. It recalls the gaiety of the flapper period of the 20s and is colourfully set by a lake in Salzkammergut, Austria. You will find most of the songs familiar and the lively close harmony choral singing is a new venture for the Society. The Royal Artillery Band, under its director Captain George E. Evans RA, ARCM, PSM will play for "White Horse Inn". The Box Office opens on May 1st. at 1030hrs. Cheaper block bookings are available for clubs on opening night. The Anglo-German Society will be present on the Thursday night. We are sure you will enjoy an entertaining evening out for all the family.

Should you feel you would like to join the Society — you don't need to sing, we have jobs for all willing hands as well as voices — please ring our Secretary, Squadron Leader John Crowhurst on Ext. 4734 or our Chairman, Wing Commander Keith De Belder on Wegberg 233 (315 after duty hours) or any member of the company. Or just come along to St. David's School any Monday evening at 8 p.m.

## The new Hillman Hunters are here!

**CHRYSLER**  
**MILITARY SALES CORPORATION (ROOTES)**  
**UP TO 17½ % DISCOUNT**

Tony Smith — Your local agent — between JHQ and Hardt

Chassis Numbers immediately — 10 days delivery from stock

Office MG civil (02161) 58118

Hardterwaldstraße 200

Home MG civil (02161) 59523

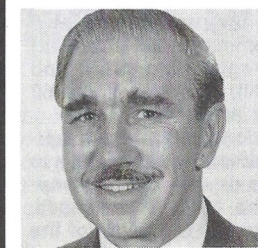
Facilities for disposal of your used car.

**HILLMAN**

**HUMBER**

**SUNBEAM**

# NAAFI NOTE BOOK



BY  
DOUGLAS MCBIRNIE

## SEEKING THE SUN?

One of the great advantages of being stationed in Germany — and there are many more — is the ability to reach sunnier climes in a matter of hours without buying an air ticket. Once on the autobahn and headed south the Black Forest is only six or seven hours away — less for the heavy footed drivers — and you can be on the sunny shores of the Adriatic by the second day. Jugoslavia, Greece, Spain and Portugal are all within easy reach of the BFG motorist. With a tent in the car or a caravan trailing behind the problems of hotel accommodation are eliminated and for once "freedom of the road" really means something. A glance at the opposite page will provide the reason for my introductory paragraph and all I need add is an assurance to new campers that the standards of the Continental camp sites are extremely high with comfort and convenience taking top priority. A copy of this year's Camping Europa will locate a camp site for you wherever you may be and it has been my experience that the descriptions of the facilities provided at each camp site are accurate.

The Naafi Camping Display, which will be housed in a large marquee adjacent to the Sports Shop in Collingwood Road, will interest caravanners as well as campers for a good selection of cooling aids, including refrigerators, will be on sale, together with folding chairs, "loungers", tables etc, for either campsite or garden use. The Display will be open from 8 to 16 May.

## GOING-UP!

For once the reference is not to prices, though the effects of inflation are still being felt, but to the progress of the new foodhall at JHQ. You will have seen the walls going up and the roof slabs being placed in position — the roofing ceremony should take place this month — and it is anticipated that the actual building, including the first floor office accommodation, will be completed by the end of

June. There will still be a lot of interior work to do before the shop fitting experts can get to work, but if the present rate of progress is maintained the biggest Naafi foodhall in the world should be ready in early September.

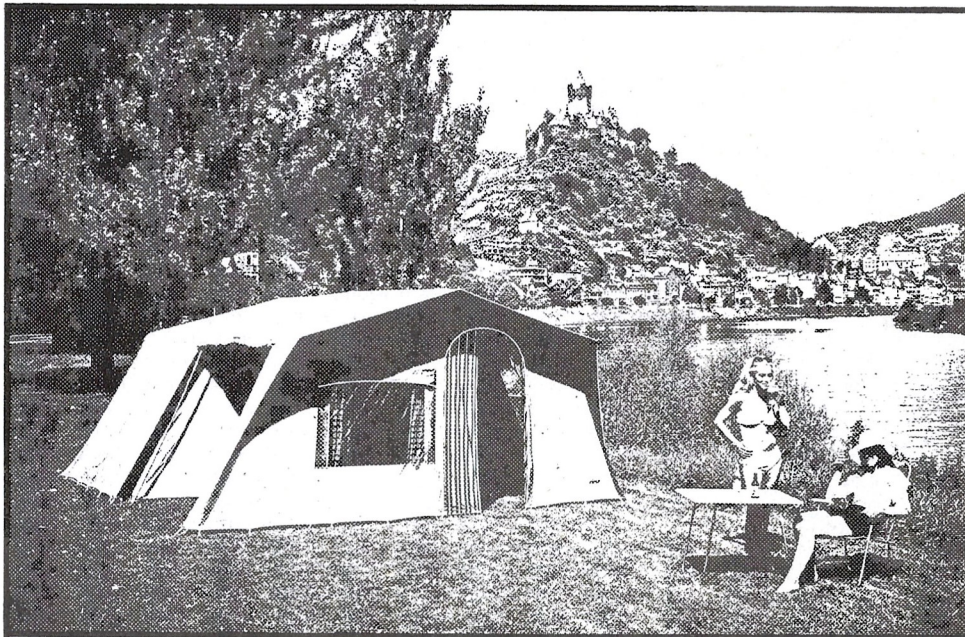
Once the new foodhall is in operation work can start in the transformation of the old foodhall into a gifts and durables department, together with a sports goods section. The target date for completion is early November, in good time for the Christmas displays. The move of the existing clothing shop to the main shopping complex involves quite extensive alterations to the present premises and this will take rather longer than first anticipated. It is not possible at this stage to give a firm date for the completion of the move.

## EVENING SHIFT

In preparation for the operation of the new foodhall, which will be over twice the size of the present one, Mr Andrew Richardson, the shop manager, has started an evening shift to refill the shop shelves ready for the morning opening. Fourteen additional staff were recruited for this evening work and the first "night shift" reported for duty on Monday, 5 April. At the time of writing the "night shift" had only been operating for a week but Mr Richardson assures me that the experiment is going well and the new recruits show every sign of welding together as an enthusiastic team.

The cosmetic counters of Naafi shops at JHQ Rheindahlen, Krefeld, Dusseldorf, Bruggen, Moenchengladbach, Wildenrath and Bracht were short-staffed on Monday 5 April when Naafi's cosmetic counter assistants were given a course of training by Marilyn Russell, the Max Factor make-up artist.





# CAMPING WITH NAAFI 1971

The 1971 camping catalogue is now in all shops. The catalogue shows the complete range of tents, camping and caravanning equipment and accessories in full colour for your easy selection together with useful hints on care and use of the equipment.

- order can be placed at any Naafi shop
- dividend and discount terms apply
- Bonus Dividend certificates can be used
- purchases by units and messes are subject to full unit discount
- instalment credit terms are available

## **JHQ RHEINDAHLEN CAMPING DISPLAY**

adjacent to the sports showroom  
in Collingwood Road

SUNDAY 8 THROUGH SUNDAY 16 MAY

WEEKDAYS normal shop opening hours

SATURDAY 0900 – 1800 hours

SUNDAY 1200 – 1800 hours

The complete range of equipment will be on sale and expert salesmen will be in attendance.

# TIPS FOR TRIPS

By Reg Hartley

Southern Bavaria is a popular holiday area. In last month's article we left you at Fussen, so let's start our Bavarian tour from there.

Crossing into Austria and taking Route 189 to just beyond REUTTE, turn left along the PLANSEE lake-side road which takes you back into Germany. At Plansee turn left and make for LINDERHOF where the 'schloss' is one of the most visited castles because of its luxurious fittings and furnishings. Nearby, OBERAMMERGAU,



Photograph by R. GRAFTON

famous for its religious plays, suffers from the inevitable commercialisation. Passing through GARMISCH – a fine shopping centre on Route 2 – you should visit WALLGAU on Route 11 which has many fine examples of houses with brightly painted shutters and mural designs together with colourful window boxes which beckon the photographers. The Post Hotel is particularly delightful and a recommended stopping place.

WALCHENSEE to the north on Route 11 is a peaceful lake ideal for picnickers and is in marked contrast to the popular TEGERNSEE on Route 318. Bands in restaurants or bandstands, pleasure boats, luxury hotels all contribute to the popularity of the resorts surrounding the lake of Tegernsee, all bubbling with life and entertainment. Consequently it's an expensive area to stay in but Hotel Seerose, an older hotel at Rottach-Egern, has moderate prices especially on the 'half pension rate' – minimum stay of 3 days – and is recommended. Two 'Alpenstrasse' each numbered Route 307 are worth mentioning. Firstly, running south from Tegernsee, Route 307 hugs the shores of SYLVENSTEIN-STAUSEE, where there is a fine large restaurant overlooking the lake at FALL. Secondly, another Route 307 skirts SCHLIERSEE, to the east of Tegernsee, and a visit to the quiet SPITZING-SEE is well worthwhile. A little further along the Alpenstrasse is one of the most attractive villages in this area – called BAYRISCHZELL – you'll reach for

your camera again.

In Upper Bavaria, the three towns I recommend should be seen are, LANDSHUT with its 14th and 15th century gabled houses, REGENSBURG on the Danube and its beautiful cathedral and BAYREUTH, the Wagnerian centre, with Eremitage, the rococo-style park three miles from the town.

GERMAN/AUSTRIAN BORDER. Some of my most pleasant memories are centred on this area. The splendid scenery, the easy motoring (provided you study the map and choose your roads) the gaiety of the people, the good food, the relatively cheap cost of living, all contribute to the impression that this was my favourite holiday region. The only snag can be the weather. It took me four visits to SALZBURG before I found it free from rain. Only rivalled by Prague for its beauty, Salzburg has much to offer, but apart from the Cathedral and the variety of ecclesiastical buildings, you should visit the Fort, the Street of a hundred trade signs, and the Schloss Hellbrunn with its fantastic water garden outside the town. Salzburg is just about 500 miles from the Rheindahlen area but, for once, resist the magnetism of the autobahn and after leaving Munich, try a trip to HERRENCHIEMSEE PALACE. Take the Bernau road to Prien and thence to the lakeside at Stock. Lake steamers run regular services on the large CHIEMSEE lake to Herren Island.

After half a mile's walk or by horsedrawn cab, the palace suddenly confronts you – an exact replica of Versailles Palace – in the middle of a wood. The fittings, furnishings and collections are among the finest in Europe. An English speaking guide is indispensable if you want to learn about the ingenious features in the machinery of the place.

Right down in the south-eastern tip of Germany not far from Salzburg is the famous BERCHTESGADEN. The five mile long lake called Konigsee, the Salzbergwerk (Salt Mine), the Rossfeldstrasse toll road of scenic splendours and of course Hitler's Eagle Nest are all worth seeing. About fifteen miles to the east of Salzburg, a series of attractive lakes are clustered. The first of these is Fuschlamm-See where the Hotel Seerose, quite inexpensive, is a good place from which to tour the area. Another lake worth seeing is St. Wolfgang on which the original White Horse Inn is situated.

CROSSING THE AUSTRIAN ALPS. If you go south from the Salzburg area through the Austrian Alps, you will find four routes to choose from. I can only tell of three from experience. Firstly, the easiest is the FELBER TAUERN route although the toll for the tunnel is rather expensive. Secondly, the most scenic route is the GROSSGLOCKNER which on a fine day is one of the most awe-inspiring drives in Europe; again there is a toll but this includes an illustrated pamphlet on the peaks and glaciers as well as free car servicing if you break down (but not free spare parts!) Lastly, there is the toll-free route from RADSTADT through the passes of OBERTAUERN and KATSCHBERG with long but not very steep gradients.

ZIMMER FREI and FREMDENZIMMER. These terms are equivalent to the 'Bed & Breakfast' signs in England. Zimmer Frei is normally displayed at private houses and the rates are usually for the room and breakfast inclusive. Thus if you are asked for DM 15 for a double room – Doppelzimmer, this is the total cost for the room and the two breakfasts. Double rooms cost between DM 12 and DM 20 and single rooms – Einzelzimmer – between DM 8 and DM 14 depending on the area and the facilities. Fremdenzimmer is more likely to be displayed by a recognised 'Gasthaus' and the rates will probably be slightly higher. You can always ask to see the room before accepting. If within reach of Austria, remember accommodation is cheaper in that country.



## The Inter Church Senate - Rheindahlen

Today we hear a great deal in the press, on the radio and, if we go to church, from the pulpit about Ecumenism. What is Ecumenism or to give it its full title: The Ecumenical Movement? It is simply an attempt by the Christian Church to come together and to work together - Ecumenical means according to the dictionary "of, or representing the whole Christian world or universal church".

In Rheindahlen we have our own small Ecumenical Movement. It is called the Inter Church Senate, the aims of which are to bring together the various Christian denominations whenever possible in those activities which do not interfere with their own particular beliefs and religious practices. It all began in the summer of 1966 when Christian Unity was very much in the news following the Second Vatican Council. Members of the three Churches in Rheindahlen became seriously interested in learning more about the various Christian bodies and the need for some common form in which all Christians could work together was felt. So the Chaplains of the three Denominations decided to form an Inter-Church Senate. It was agreed that this Senate should be composed of three (later raised to four) lay members of each of the three congregations of St Andrews, St Boniface and St Thomas More Churches with all Chaplains being ex-officio members and attending meetings to give advice on matters under discussion when necessary. Members of the Senate were to be nominated by their respective Churches.

The first meeting was held on 21 September 1966 and since then has met regularly once a month. Over the years there has

developed a significant change in inter-church relationships and the Senate now contributes a not insignificant influence in Rheindahlen life. In particular the Senate has:

Established a welcoming organisation for all new married families arriving in Rheindahlen and Wickrath. Volunteers are allocated an area and call on all new arrivals offering practical advice where necessary. This is a service which is greatly appreciated and one in which every Christian can give valuable help.

Established an annual pattern of joint ecumenical services at which Chaplains from each church take their part together in leading joint Christian worship. The agreed pattern is:

- |                                |  |
|--------------------------------|--|
| The Octave for Christian Unity | - St Thomas More's Church  |
| Whitsun                        | - St Andrew's Church   |
| September/October              | - St Boniface Church   |
|                                | A service of dedication for all Christian workers                            |
| Holy Week                      | - A Joint Service each evening on Monday, Tuesday and Wednesday of Holy Week |

Encouraged joint activities amongst the Ladies of the three Churches.

Sponsored many Sunday evening lectures from visiting church dignitaries. Their subjects have been varied and instructive.

Sponsored Carol Singing at Christmas (this year proceeds amounted to DM 7500) and an annual Church fete in the early summer. The money from these has been devoted to UK, World Wide and Local German Charities.

**FIAT**

**AUSTIN**

**MORRIS**



From the specialists for the Military

**Rankins of Rheydt**

407 Rheydt • 111 Limitenstr. • Tel. Rheydt 4 80 76

■ large stocks ■ best HP

Telephone for demonstration and information

We will call and see you



Above: Rhine Army Theatre Society's winning entry of 'Vivat, Vivat, Regina'

Below: Ariel Theatre Guild's entry of 'A Flea In Her Ear' which took third place.



### THE ORPHAN

As I passed by I saw him there,  
His dark rimmed eyes fixed in a stare,  
He wanted to speak but did not dare,  
So he went on sitting silently.  
He'd been alone for many years,  
His eyes were dry he'd cried his tears,  
But still had left his many fears,  
So he went on sitting silently.

Thirty children from Schloss Ditborn were entertained to a Tea Party by the pupils of Rochester House, Kent School, recently. The money for the party had been raised through various schemes including a House Discotheque. The Senior girls did the catering and everyone joined in the party activities. Every child left with an Easter egg, and flowers were presented to the Nuns. 11 year old Jacqueline Walsh of Rochester House wrote the poem before the Party, there were many smiling faces on the day!

# RHEINDAHLEN

## DUTCH AWARD FOR PHOTOGRAPHER

For the last two years, Corporal Dunn has been the public relations photographer at 2 ATAF. During that time his work has involved him in duties with four separate Air Forces — British, German, Belgian and Dutch — and he has travelled all over Europe and to the United States of America. Many of his photographs have been published in the Rheindahlen Bulletin.



He is seen here (right) receiving a Royal Netherlands Air Force wall plaque and two long-playing records from Captain J. Breukelaar, commandant of the Dutch Air Force support unit at the headquarters.

Seen in the background are Unteroffizier Kluter (left), public information clerk, 2ATAF and Major Dallman, Public Information Officer, who also received plaques from Captain Breukelaar in recognition of their work for the Dutch support unit.

## FINAL OF THE BAOR COOKERY COMPETITIONS 1971

During the past three months preliminary competitions have been held throughout Germany to select the entrants for the BAOR Finals. The winners of the finals will represent BAOR in the Army Cookery Competitions at Aldershot. In doing so these Army finalists will be travelling a path first trod in 1896 when the first ever Army Cookery Competition was held.

Over the period of fifty-six years to 1952, when the Table d'Honneur came into being and ever since, the Army Cookery Competitions have displayed an increasing standard of craftsmanship in the entries.

The finals were divided into four classes: —

**The Unit Team Competition** with teams of one Warrant Officer or Senior NCO ACC and two cooks below the rank of Cpl were required to cook a four course meal for ten people.

Winner — 4 Div Regt RCT  
Runner Up-4 Fd Regt RA

# ROUNDAABOUT

**The Individual Competition** — Advanced, was a competition for all qualified WOs and NCOs in BAOR. Each competitor had to cook a four course meal for five persons.

Winner —  
Cpl Rozee, ACC  
(7 Fd Wksp REME)

Runner Up —  
Cpl Harrison, ACC  
(94 Loc Regt RA)

Cpl Rozee's menu consisted of Consomme Royale, Fillet of Sole Bercy, Escalope of Veal Viennoise with Parisienne Potatoes and Cauliflower au Gratin followed by Russian Charlotte.

**The Hospital Team Competition** was completed at an earlier date.

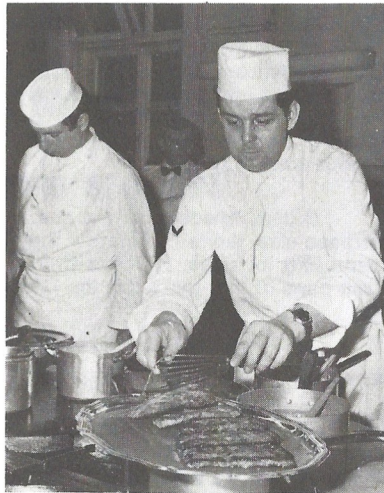
Winner —  
BMH Iserlohn  
Runner Up —  
BMH Rinteln

**The Table D'Honneur** is a competition for display of craftsmanship. The supreme awards are a Gold, Silver and Bronze medal awarded by the Cookery and Food Association.

Gold Medal  
Silver Medal  
Bronze Medal

Sgt Palmer, ACC  
Cpl Cunningham, ACC  
Pte Edwards, ACC

(28 Amph Regt RE)  
(26 Engr Regt)  
(BMH Rinteln)



Cpl Rozee, winner of the Advanced Individual Competition preparing his Escalope of Veal Viennoise

received by the Hon Sec (RA 2026). Meanwhile, the Circle embarks upon an exhaustive and interesting programme for the remainder of 1971.  
J.A.S.

## THRIFT SHOP HELPS THE HOSPITAL

Wives who run the Thrift Shop at RAF Rheindahlen have presented DM 500 (nearly £60) worth of pouffes to the RAF Hospital at Wegberg for use in the families' wards.

Photograph shows Group Captain J. H. Ferguson, Officer Commanding the hospital, receiving the pouffes from (left to right) Mrs Sheppard, Mrs Vanstone and Mrs Whitlock. Photograph by RAFG PR.



## BRITISH COMMANDERS AT BUNDESPRAESIDIALAMT

Herr Gustav Heinemann (left), President of the Federal German Republic, with General Sir Peter Hunt, Commander-in-Chief, British Army of the Rhine; and Air Marshal Sir Harold Martin, Commander-in-Chief, Royal Air Force Germany, when the two British Commanders paid their first formal call on the President. Also in the picture (third from right), is Sir Roger Jackling, British Ambassador to Bonn. Photograph by RAFG PR.



## RHEINDAHLEN RAILWAY CIRCLE

The Rheindahlen Railway Circle was formed in August 1970 to cater for all service and UK based personnel interested in rail transport. Initially, it was intended that membership should be confined to Rheindahlen itself but interest has been such that there are now some 50 members in Rheindahlen, Düsseldorf, Viersen, Mönchengladbach, Brüggen, Wildenrath, Mulheim, Bielefeld and Fallingb. Membership is divided at present into 28 Army members, 10 Royal and German Air Force members and 11 Civilian members. Circle affairs are run by a Committee consisting of a Chairman, the Honorary Secretary the Honorary Treasurer, and 3 members representing respectively Army, Royal Air Force and Civilian interests. Senior Honorary Appointments are Patron (Major-General D R Carroll, OBE), President (Col A G Watson) and Vice President (Wing Commander R Smith RAF).

Meetings are held regularly and take the form of visits to places of interest, film and slide shows, lectures and talks. Social evenings are also held from time to time. Full membership costs DM 5.00 and Junior membership DM 1.00 per annum.

Apart from the Royal Corps of Transport Railway Society, whose aims and membership are quite different, it is thought that the Rheindahlen Railway Circle is the only service club of its kind in the world, although information to the contrary will be gladly

## MUZZLE-LOADING WEAPONS

In recent years there has been an upsurge in interest in the use of muzzle-loading or 'Black Powder' weapons. However, an immediate word of warning. Old firearms can be extremely dangerous to the user unless they have been properly tested or 'proofed'. The passage of time will have left its mark in corrosion, rust and crystallization and it is unlikely that the barrels would withstand even a light powder load. Secondly **NEVER** use any form of modern smokeless powder in a weapon proofed for Black Powder only.

Excellent replicas can now be obtained for a fraction of the cost of an original and as the majority of these are of Italian or Belgian manufacture, they have been proofed fired on Black Powder. These weapons are safe providing the basic principles of loading are followed.

### Black Powder (Gunpowder)

As every schoolboy knows, gunpowder is a mixture of charcoal, sulphur and saltpeter. The actual origin of gunpowder is lost in antiquity. While ancient records refer to charcoal and sulphur, saltpeter does not appear to have been known until mentioned by Roger Bacon in circa 1250. The probable reason for this is that saltpeter, or to give its chemical name Potassium Nitrate, does not appear as a natural mineral but is produced by the oxidization of organic matter. This oxidization was previously carried out in nitre beds using manure or urine as the basis of organic nitrogen.



Photograph by E. Sommer.

This gives rise to the story that during the American Civil War, when the majority of the powder mills were in the North, Southern ladies were exhorted to retain the contents of their chamberpots to assist in the war effort!

Today saltpeter is manufactured efficiently by converting sodium nitrate (Chile Nitrate) to potassium nitrate. Various mixes were used in early forms of gunpowder, but the Prussian mix of 75:15:10 was adopted by Britain in the early 1800's and present day Black Powders are using basically the same formula.

In the manufacture of powder, the ingredients are ground, thoroughly mixed, dampened with a mixture of alcohol and water and compressed into cakes. These cakes are then broken apart and re-ground. They are then placed in a drum with a small quantity of graphite and revolved until glazed. Finally they are screened into various sizes of grains.

British Powders carry a numerical grading, No 6 being an all purpose size, while in America they use the Fg sign. They recommend FFG for rifles, FFFg for pistols and revolvers and FFFFg for flash pans of flint-locks. On the Continent the sizes are metric.

### Weapons

An amazing variety of replica guns are now available, ranging from the .69 Calibre 'Tower' flintlock pistol of 1780 to the Remington ZOUAVE rifle .58 calibre percussion lock of 1863. The illustration shows a modern reproduction of a .36 Colt 'Navy' revolver and a Remington .44 'New Army' revolver. There is also a complete range of powder flasks, bullet moulds, percussion caps, flints etc. These weapons are lethal and extremely accurate within their limitations, particularly in the case of the rifles.

### Loading and Firing

There is a certain mystique regarding the correct loads for muzzle-loaders and after experience has been gained it is interesting to experiment with various loads. However the beginner is strongly advised to purchase a powder flask fitted with a measure suitable for his particular choice of weapon.

In the case of the rifle, do not emulate the characters on the screen and pour powder straight from the flask into the barrel. There may well be a smouldering patch from a preceding shot which will be sufficient to ignite the powder both in the barrel and the flask. The resultant bang is spectacular and highly dangerous.

So then to begin: The charge is measured into a plastic or glass tube or bottle and then poured down the barrel. A cloth patch is then placed over the muzzle, the ball placed on the patch and a sharp thump starts the ball. The ramrod is used to seat the ball onto the powder. The hammer is then half-cocked, a percussion cap placed on the nipple and the rifle is ready for firing (but please ensure that you have withdrawn the ramrod). Bring the hammer to full cock, take careful aim and squeeze off. The flash, cloud of white smoke and the gentle thump of the recoil is the reward for your work. Remember, there is a delay between pulling the trigger and ignition, so don't flinch!

# OPTIK-HILGER

**Ophthalmic and dispensing**

**Contact lens specialist**

**English spoken**

In Stock:

Latest fashioned style of frames  
from well known firms in Europe

Zeiss — Marwitz + Hauser — Metzler  
Christian Dior — Viennale  
Essel, Paris — Serge Kirchofer, Vienna  
Boutique Modells

**Latest in Lenses**  
**ZEISS Umbramatic**

which change colour between 10-70 % automatically

**Eyetest free of charge**

After testing you may wait for your glasses

5144 Wegberg · Beecker Straße 26 · Tel. 21 59  
405 Mönchengladbach · Neußer Straße 260 · Tel. 1 69 82

## **BMC LANCIA INSURANCE & CAR FINANCE**

**up to 20 % NATO Discount given to Forces and  
Sponsored Civilians on all makes represented by us.**

Call on us to-day for any information you require.  
Our showrooms are in the JHQ Shopping Centre,  
opposite the BP Petrol Station, Tel. 021 61 / 593 26  
within easy reach of anyone stationed or visiting the  
JHQ area.

Not only do you buy your car from us but you avail  
yourself at the same time of our excellent After Sales  
Service.

HP can be arranged for periods of up to 36 months.  
We can also supply you with immediate insurance  
cover for your new or used car.

## **KREMER Automobile**

JHQ SHOPPING CENTRE  
TEL.: MÖNCHEGLADBACH 5 93 26

All  
Prices  
tax free

## **PSI SHOP SHQ RAF RHEINDAHLEN**

Open  
to  
entitled personnel only

TV, RADIO, Car Radio, Stereo and Audio Equip-  
ment, Swiss and Japanese Watches, Cameras and  
Projectors. Camping Goods, Garden Furniture Etc.  
A few "Special Offer" Tents still available. Large  
range of good quality inexpensive sleeping bags.

**新華酒家**

*Chinese Restaurant*

for good Chinese food, atmosphere and price

**Lichthof 4 Mönchengladbach**

Open daily 12.00 — 15.00 and 17.00 — 23.30

# Good Gardening in May

"April brings the primroses sweet,  
Scatters daisies at our feet.  
May brings pretty flocks of lambs,  
Dancing round their fleecy dams.  
June brings tulips, lilies, roses,  
Fills the children's hands with posies."

How true this old rhyme is when applied to UK, but here in Rheindahlen where the spring season is very short, conditions are not quite the same as at home in England. The Rheindahlen soil can be classed generally as "poor and sour" and should be dressed with garden lime (2lbs to 10 sq yds). If possible well rotted manure should be dug in, and planting can take place soon afterwards.

From the beginning of May, green vegetables should be transplanted. French, runner beans and cucumbers should not be put out before about 10th May. Tomato plants may be transplanted during the 2nd or 3rd week of the month. Dahlia tubers or cuttings may be planted and gladioli bulbs may be sown, every 2 or 3 weeks so that you may have a continuous supply of blooms from late July onwards.

From the middle of May, many plants may be transplanted to places where they are to bloom; as a guide, some of the popular ones with colour are begonia (all varieties) to be planted in a shady place if possible. The following like a sunny position: — ageratum,

lobelia, alyssum, asters, stocks, salvia, marigolds (all varieties) and zinnias. Geraniums (all varieties) and fuschias (all varieties) like a protected shady place with limited sun.

So that you should have large, bushy plants with lots of blooms, nip out the centre of such plants as ageratum, salvia, geranium and fuschia. May is the month for lupins, and providing you remove the flowers before they start to turn into seed pods, they will flower again in the year.

The garden looks untidy when the spring flowers are finished. DO NOT tidy up with garden shears; just tie the bulb leaves in a knot and leave until the end of summer to be lifted, stored or left in the ground ready to bloom again in the spring.

Before fruit trees break into blossom, a spray of insecticide may be used to ensure that pests attacking the blossoms are destroyed. A suitable insecticide is one known as B 605 which is available from civilian shops or from the Garrison Nursery.

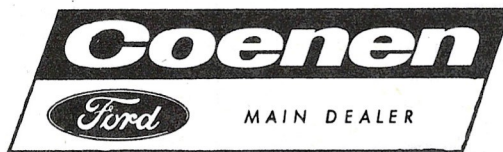
Many lawns in this area contain a great deal of moss; one way to reduce this is to rake vigorously to remove old grass and all the moss. Dress the lawn with garden lime (3lbs to 10 sq yds) and apply a dressing of nitro phosphate.

More advice can be obtained from Mr Fleming at the Garrison Nursery, Snyders Road. Tel. Monchengladbach Civil 58124 during working hours and on Saturday mornings between 0900 and 1200 hrs, Until next month, when more gardening tips for June will be published, goodbye and good gardening!



Make your life worthwhile and buy a reliable

SECOND HAND CAR from



MONCHENGLADBACH  
BURGGRAFENSTR. 55  
PHONE (021 61) 311 66

All cars are BFG Road tested and garage maintained.  
Reasonable Hire Purchase Terms provided.  
Free demonstration or free transport to and from garage.  
Also large selection of cars for hire.

For further details please phone our representative Herr Lehmann on MG 3 11 66

**SAY IT WITH FLOWERS**

from your Florist

## BLUMEN — MENKE

Wedding Bouquets — Floral Sprays

Wreaths — Fresh Flowers daily

Delivery within the camp and to Wegberg Hospital

Tel. M.Gl. 5 96 15

AGENT FOR INTERFLORA.

## *Figaro* Albert Penatzer

Ladies and Gents Hair Dressing Salons also Manicures

JHQ Shopping Centre — Tel. M.Gladb. 5 95 68

S.West Extension, Cambridge Drive — Tel. 5 87 38

900-1800 hrs daily except Monday

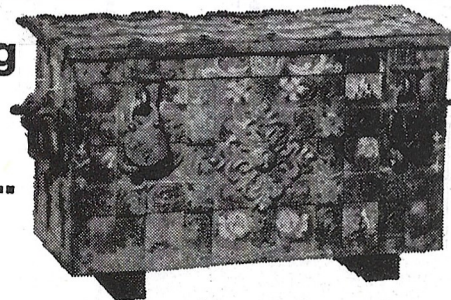
**TROPIC-CENTER**  
the first class PET SHOP  
MÖNCHENGLADBACH  
Franz-Gielen-Str. 4-8 Telefon 1 56 62

**ALL FRESH & MARINE AQUARIA**  
requirements in stock

**DOGS OF ALL BREEDS**  
supplied & trimmed

**PARROTS, BUDGIES & CANARIES**  
for your home or aviary

**Everything  
is  
changing...**



Finance also has become more modern and adaptable. Services are more varied, advisory services more comprehensive, which we can offer you as a modern major bank. That means:

- opening a current-account or a savings-account
- payments by means of bankers' transfers
- expert advice on all questions of profitable capital investment
- and last not least: personal and courteous service



## COMMERZBANK

Mönchengladbach - Königsstraße 2

Branches: Hauptbahnhof, Humboldtstraße 6

Rheindahlen 1, Plektrudisstr. 15 - Rheindahlen 2, Headquarter  
RAF Wildenrath B.F.P.O. 42 - RAF Hospital Wegberg B.F.P.O. 40



**AUSTIN · MORRIS  
MG · TRIUMPH**

SERVICE · REPAIRS · SPARE PARTS  
AND SPECIAL ACCESSORIES

## J. MASSIER

405 Mönchengladbach

Künkelstraße 125 - (B 57) - Tel. 2 21 16

# Personality of the Month



## NEW CHIEF OF STAFF HQ BAOR

Major General D. G. HOUSE, CBE, MC, recently succeeded to the appointment of Chief of Staff HQ British Army of the Rhine.

Major General David HOUSE, 48, was first commissioned in 1941 and served with the Kings Royal Rifle Corps throughout the 1939-45 War. He commanded 1st Royal Green Jackets in The Far East in 1964 and for 6 months in Berlin in 1965, and from 1965-67 he was Commander, 51 Gurkha Infantry Brigade Group in Brunei.

Among his many sporting interests, General HOUSE has always been a very keen supporter of Army football. He says he has dabbled in most sports but hopes now to join a local shooting syndicate. He also intends to resume light aircraft flying training.

He is married and is accompanied by his wife, Sheila. His younger daughter, Elizabeth, is still engaged in a secretarial course in Buckinghamshire, and his elder daughter, Jennifer, is married to Captain William Hickie, Light Infantry. Photograph by BAOR PR.

## Prisca and Aquila

Can you guess the link between Prisca and Aquila, the Royal Air Force Element at CRC Breckendorf, and Rheindahlen? Sorry, no prizes for the first correct solution, for I'm going to tell you the answer right away.

Prisca and Aquila are a married couple who appear several times in the New Testament. They had a lot in common with service families of today; like us, they were always on the move.

They first appear in Acts 18 as residents of Rome. Next we find them in Corinth and later in Ephesus. Still later they are back in Rome and finally finish up once again in Ephesus. It's interesting to note that St Paul wrote his first Epistle to the Corinthians from their Ephesus home and in the letter he sends greetings "from the church that is in their house".

And there's the link with Breckendorf, for it is in the house of one of the RAF families serving in the wilds of Schleswig-Holstein that the church meets when I visit that outpost of RAF Germany — now there's the link with Rheindahlen — and conduct services.

To get back to Prisca and Aquila, for a moment; they lived long before the days when there was any such thing as a church

building. Indeed it was well into the 3rd century before we hear of any church buildings as such at all. Until then, and for long afterwards most Christians met for worship in private houses.

So up there in Breckendorf where it's such a very long way to any British congregation, when a family offers their home for the church to meet in, they are indeed treading "where the saints have trod". I don't think they're so very different in fact from Prisca and Aquila who were two of these wonderful people who make their home a centre of Christian friendship and service, — who have a "welcome on the mat", for all, not just church folk, because Christ is already their unseen but ever present guest. So the sad, the lonely, the depressed, find a haven of peace with them.

There are such homes as Prisca and Aquila's in Rheindahlen, but we could do with more — many more. How about yours?

## ECUMENICAL SERVICE AT ST ANDREWS

The sixth and last Ecumenical Service of the 1970/71 series will be at St Andrews Church on Monday 24th May at 1915 hrs.

The Churches meet in worship at this time with three thoughts and themes in mind:

- a. **The approach to Whit Sunday**
- b. **Thanksgiving for the joint sense of Purpose manifest at the Fete on Saturday 22nd May**
- c. **The nearness of Summer, sunshine, holidays, games and exercise with the joy, relaxation and health which they encourage.**

There will be a welcome for everyone at St Andrews. Come in the Spirit of thankfulness and joy.

# STOP!

## LOOKING for a gift or souvenir?

Come and look round our newly extended gift department — and view our large selection of Hummel and Dresden China.

Gifts and souvenirs for all tastes. We specialize in Black Forest Cuckoo Clocks.

Also a very wide selection in all Leather Goods.

Special offers in toys still available.

# WILHELM SCHMITZ

## THE CORNER SHOP

Phone 59610



## RAMILLIES -

### A BATTLEFIELD TOUR ORGANISED BY THE HISTORICAL SOCIETY

You are invited to come on a tour on Sunday 23rd May of the battlefield of Ramillies, a battle which many authorities consider to be the most successful action of the Duke of Marlborough. On this one occasion, Sunday 23rd May 1706, he was in sole command of the Anglo-Dutch army, and earned the whole credit for both the victory over the French army and the subsequent conquest of the Spanish Netherlands. The battlefield is virtually unchanged after exactly 265 years, and the various positions taken up can be quite easily visualised even today.

The tour will meet at the Cafe du Centre, Merdorp (6 km SW of Hannut and 40 km W of the centre of Liege) at 1200 hrs. A suggested route to Merdorp is as follows: -

- a. Via Route 57 and Autobahn E5 to Bierset Airfield, Liege
- b. Leave the Autobahn where the signs point off to Bierset Airfield
- c. Via Route N37 westwards to Saives (a tricky stretch to get onto)
- d. Via Route N40 southwest to Braives and Moxhe
- e. Via Wasseiges to Merdorp (plenty of signs if you keep a look-out)

This whole route is approximately 100 miles. Allow about three hours for the journey.

If you intend to come on the tour, will you please inform Major Macfarlane, Ext RA 2004 by Friday 21st May so that he can prepare sketch maps. If there is sufficient demand, it might be possible to arrange a coach or minibus. Bring a picnic lunch and binoculars if possible, walking shoes should be quite adequate.

**TOURIST NOTE.** Just north of Flox-les-Caves, on the road to

Jauche, there are curious caves under the hillside which are open to the public. Though wired for electric light, they may not be lit so early in the season, and anyone wishing to visit them should take a torch. They are signposted from the village centre by "Grottes" and at the roadside by "Vers les Sousterrains".

## SMALL ADVERTS

**JOBS AND VACANCIES FOR DEPENDANTS:** A varied range of jobs is available for Dependants of Army, RAF and civilian families stationed in and around Rheindahlen. You should register with the British Employment Office, 6 PCLU, RPC, No 1 Bedford Walk, Rheindahlen, as soon as possible. If we cannot fix you up immediately, we will place you on our waiting list, and, with the constant comings and goings, your turn will soon come. Vacancies exist now for many types of Professional, Clerical, Domestic and Unskilled work. Rates of pay are good and your earnings are TAX FREE.

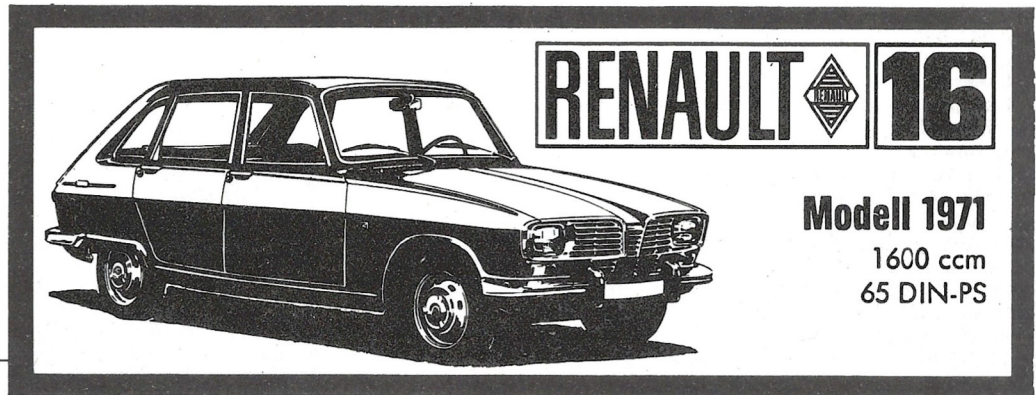
**CARAVAN FOR HIRE:** The 23 Regiment RCT Caravan site at LECHBRUCH in Bavaria is available for booking at a cost of DM 100 per week. The Caravan is a 1969 4 berth Sprite 'Alpine' and may be booked for periods between 3rd April 71 and 30th September 71 inclusive. Anyone interested in booking this caravan is requested to apply in writing to the Chief Clerk HQ 23 Regiment RCT, BFPO 40 or telephone MG Military 267.

**FOR SALE:** Ford Cortina 1600 Super Estate, Sept. 1969. White/Tan upholstery. 15,000 miles. RHD. Heavy-duty underseal when new. Tow-bar fitted. Inertia-reel seat belts. Price: DM 5,200 or Sterling equivalent. Contact: Wg. Cdr. B. J. Ball, Ext. 4587 or 4639.

**FOR SALE:** Morris Oxford Estate. 1967. In excellent condition, UK taxed. 25,000 miles. Gold Seal replacement engine, other parts renewed, clutch plate, exhaust, battery, dynamo and radial tyres. Price: DM 3,300 O.N.O. Tel.: RA 2803.

**Autohaus  
BONGARTZ**

**Waldniel  
Ungerather Straße 60  
Telefon Amern 4135**



**Customer Service  
and Sales  
Repairs**

Most people buy the Renault 16, because it is so modern - then they find out it's so safe!

We recommend that you have a testdrive.

# SPORTS PAGE

## GARRISON ATHLETICS MEETING WEDNESDAY 12th MAY

This meeting has been built up over the last five years as one of the main annual sporting and social events of the Garrison, with increasing numbers taking part. We are more interested in the numbers of all ranks and dependants "having a go" than in the records of a few gladiators.

All the usual track and field events are competed for by 10 to 12 teams from all corners of the Garrison. Usually one of the branch teams of HQ BAOR have won the competition; but last year the German National Detachment pulled off a well-deserved victory. However, we get just as much fun from the efforts of the smaller teams like NAAFI who may not expect to win, but are still very much part of the show.

Among the open events are the Tug-of-war, Tossing the Caber and Scottish Weight, Women's Services Team relay, Ladies Race, Veterans Race, and childrens races for the under fives and under tens.

The RAF Volunteer Band is providing the music, and NAAFI the canteen and buffet lunch; so make a note in your diary to spend Wednesday 12th May at the Garrison Athletics Pitch (off York Drive). The programme starts at 0930 hrs and continues until 1715 hrs.

## BAOR Easter Squash Festival

Every Easter weekend for the past seventeen years an enthusiastic band of squash players have descended on Rheindahlen to compete in the BAOR Squash Festival. The same Clubs come time and time again and competition for places in the teams is extremely keen. This is not only due to the fact that the standard of play has become so high that the Festival is now rated as the leading one of its type in Europe but also because the BAOR Squash Association's reputation for entertainment is renowned in Squash circles particularly because of the welcome given to players by members of local Officers Messes and the charm of the young ladies of Rheindahlen.

This year a new milestone in the event was reached for six teams took part for the first time. For many years the two leading British Clubs, Escorts and Jesters, and Wales have been regulars together with the BAOR team and one other side. Last year Copenhagen was unable to raise a team of high enough standard and so this year Holland and Sweden were asked if they were interested in competing. Both were extremely enthusiastic and so it was decided to invite both and see whether the teams could stand the strain of five hard matches and the social life over the four days of Easter.

The experiment proved completely successful even though the players were noticeably more jaded when they departed Rheindahlen on Easter Monday morning.

This years standard of play was as high as ever with each of the visiting teams bringing one or more international players. It would be difficult to single out any player as the star of the weekend but Robin Chalmers, the Scottish No 3, who played for the Escorts was the most successful. Even so Captain Richard Green of HQ BAOR playing at No 1 for the home team took Chalmers to five close fought games before going down 9-7 in the fifth. Michael

Nathanson, a South African, who is the Swedish Champion and National Coach was a colourful player of great skill and his match against the giant of European squash players, 6 feet 6 inches tall, Robert Anjema the Dutch Champion, was the most entertaining of the festival. Both players knew every trick of the game and the referee for the match, Major Chris Stock of BAOR, had to call on all of his extensive knowledge of the rules of the game to settle appeals and counter appeals. This was festival sport at its very best and tremendous fun for the many spectators.

Jesters brought along Peter Cattrall, a young player who represented Oxford University and is now in line for selection for England. Finally Wales brought one international, Peter Lowe, and the very experienced ex-international, Laurence Verney, paying his eleventh visit to the Festival and we sincerely hope not his last. This player, who has represented his Country on fifty occasions and figures in the Guinness book of records, showed how the older experienced players with economy of physical effort and faultless positioning of the ball can beat the younger fitter opponent. His match on the final day against the nineteen-year-old Graham Bushell, the current champion of the National Provincial Bank and representing Holland at No 2, was a joy to watch and the crowd of over a hundred were kept spell-bound by Verney's faultless display against this very young and talented player who recovered almost implayable shots time and time again. Verney won this close game in three straight sets.

Three of the local HQ BAOR side represented the home team. They were Captain Richard Green, Major Lance Brett and Lt. Colonel Denis Shuttleworth.

The other two were Major Chris Stock and Lt. Hugh Jenner of Berlin.

The Escorts were top team with five wins followed by Jesters with four successes. BAOR were fifth and so handed over the booby prize "Leo" to Sweden who, although they put up a spirited performance, were unable to win any match. At the end of the weekend teams were unanimous in declaring it 'the best festival yet'. Captain Alex Towells of 34 AEC was responsible for all the arrangements for the Festival.

D. L.



**Capt. Richard Green (right) passed the ball to Robin Chalmers, the Scottish International during their match.**

# STOP PRESS

## HOUSEHOLD DIVISION CLUB

The next meeting will be held on Wednesday 5th May at No 1 Garrison Sgts Mess Annex, Collingwood Road, commencing at 2030 hrs. All members and former members of the Household Brigade are welcome to attend.

## S.W. EXTENSION LIBRARY

This subscription library, at the end of North Lodge, No. 1 Civilian Mess, Wolseley Road, is open to all members of the Forces, Army and RAF, and UK-based civilians and their families. The library is run by volunteer staff; the charges raised all go to the purchase of new books. These are:

Membership (per person and/or family) 2 DM New ('A') books . . . 35 pfgs for 2 weeks Books ('B') over 18 months old . . . 15 pfgs for 2 weeks.

It is open every Tuesday and Thursday from 4.30 p.m. to 6.30 p.m.

## COFFEE/SHERRY MORNING FOR LADIES OF THE RAF OFFICERS' MESS

We look forward to seeing old and new friends at the usual monthly Coffee/Sherry morning on Friday, May 28th - 10.30 at the Ladies' Room of the RAF Officers' Mess.

## "THE LEESIDERS" AT A FOLK CONCERT

"The Leesiders" a folk duo from Liverpool will be appearing in the Gymnasium at RAF Hospital Wegberg on Wednesday 26th May 1971. The evening's entertainment will start at 2030 hrs and tickets can be obtained at DM 3.00 from Fg Off Taylor WRAF on Ext 373 any time after Monday 10th May.

## GARRISON GOLF MEETING

A Garrison Golf Meeting is to be held at the RAF Germany GC Bruggen on Friday 21 May. This meeting is open to all Army and Civilian personnel on the strength of Headquarters and Units located within Rheindahlen Garrison. The meeting will consist of 18 holes medal in the morning and 18 holes Green some Stableford in the afternoon. Full details of method of entry will be announced in Garrison Routine Orders.

## PUBLIC HOLIDAYS

Queen's Birthday - 20th May. Whit-sun Holiday - 1230 hrs on Friday, 28th May to 1345 hrs on Tuesday 1st June.

## FENCING

It is proposed to start a Fencing Club within the Garrison. Anyone interested please contact WO II Haslam, RA 2150

## JUDO

The Rheindahlen Garrison Judo Club is in need of 2 instructors in order that it may continue to flourish. Any person who considers they are qualified and are prepared to accept this post please contact WO II Haslam, RA 2150

## INTERNATIONAL LADIES CLUB

The next meeting of the International Ladies Club will be held at the USOC on Thursday, May 6th. This month it is being given by the British Service Wives and for their Entertainment they are providing

"Diamonds and Devonshire Tea". After the Diamonds and Jewellery display many items may be purchased! Tea, raffles and nursery as usual.

## TRANSPORT TO THE BOWLING ALLEY AT RHEYDT

Service personnel and their dependants living at Rheindahlen are permitted to use the Routine Run 37 to enable them to visit the bowling alley at Rheydt. This bus leaves the MT Section, RAF Rheindahlen at 1900 hrs on Wednesdays and Saturdays (calling at St. Patrick's School at 1905 hrs) and returning from Webschulstrasse at approximately 0015 hrs. The alley can also be reached by catching bus No 23 to „Bahnhof“ in Monchengladbach, then changing to a Rheydt bus and getting off at Webschulstrasse.

The bowling alley gives a reduced rate ("NATO rebate") to members of the Allied Forces serving in Germany. The cost of a lane is DM 1.80. Drinks and snacks are also available.

## RAF WIVES CLUB

The RAF Wives Club meets every other Tuesday evening at 8 pm in the Services Club Room, Blue Pool Restaurant. Refreshments are available and during the evening a raffle is held, also a snowball and tombola. The next meeting on Tuesday 11th May will be a Tupperware demonstration and on 25th May there is a jewellery talk and demonstration by Margaret Singleton. Transport is provided to and from the Club Room - 1940 hrs at St. Andrew's School and 1950 hrs at St. Christopher's School. An enjoyable evening is available for 1 DM per person, entrance fee, so come along and join us and make some new friends.

Some of this jewellery will appeal particularly to the younger person, so why not bring your daughter along?

# We RENT NEW T.V.'s for only D.M. 6,35 per week

(£ 3.5.0 per month)

- BRAND NEW T.V. SETS BY LEADING GERMAN MAKERS
- PROMPT FREE SERVICE
- OUTDOOR AERIALS HIRED
- REPLACEMENT SET IF REQUIRED
- AN OPTION TO BUY AFTER 6 MONTHS YOUR RENTAL (LESS M.W.S. REFUNDED)
- 200 SALES AND SERVICE POINTS IN U.K.
- BRITISH PERSONNEL

Our address in West Germany:

## TV KAUFMIETE GMBH

4 Dusseldorf, 415 Krefeld, 43 Essen  
Scheurenstr 7. Neußer Str 33. Viehoferstr 21  
Tel: (0211) 12041 Tel: (02151) 39175 Tel: (02141) 223867

For further information complete this coupon and  
send to: Forces Liaison Office, TV Kaufmiete,  
4 Dusseldorf, Scheurenstr 7.

NAME .....

ADDRESS .....

## NOTICE OF MOVEMENT

FROM 13th April 1971 UNTIL FURTHER NOTICE BUSINESS  
WILL BE CONDUCTED AT OUR BUSCHOF SITE OFFICE -

CAMBRIDGE DRIVE (ADJOINING FIGAROS)  
SOUTH WEST EXTENSION

OPENING HOURS MONDAY TO FRIDAY 1000 - 1800 HRS  
SATURDAY 1000 - 1300 HRS

TEL: M.G. 59655

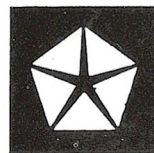
### ELLEN CULPECK

FORCES INSURANCE BROKERS

# RENAULT



# SAAB 99



# SIMCA

## Lawrence Allwright

405 Mönchengladbach, Alter Markt 21  
or phone anytime (02161) 36137

Representative - Jim Thompson has demonstration cars  
on show Saturday mornings opposite JHQ NAAFI