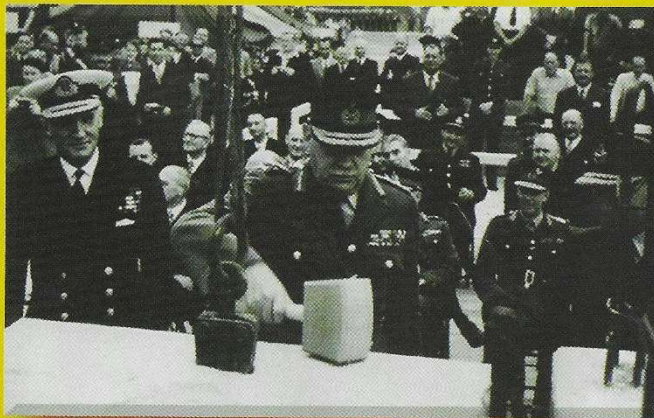


JHQ 1954 - 2004

50th ANNIVERSARY



JOINT HEADQUARTERS
OF
FLAG OFFICER GERMANY
NORTHERN ARMY GROUP
2ND ALLIED TACTICAL AIR FORCE

THIS STONE WAS LAID JOINTLY BY
Rear Admiral R. St. V. SHERBROOKE, V.C., C.B., D.S.O.
General Sir Richard N. GALE, K.C.B., K.B.E., D.S.O., M.C.
Air Chief Marshal Sir Robert M. FOSTER, K.C.B., C.B.E., D.F.C.

ON
1ST JULY 1953

Contractor
Firma Christian Oeffke

Chief Engineer
Colonel H. Cratton

RHEINDAHLEN and ELMPT Bulletin No. 390/21 July 2004

**MITSUBISHI GRANDIS.
YOU WON'T WANT TO DRIVE
ANYTHING ELSE**



FROM £13,999

The all new **Mitsubishi Grandis** is as stunning to look at as it is to drive, and yes, it's every bit a people carrier.

- Fully automatic air conditioning
- ABS with EBD
- Front, side and curtain airbags
- 2.4 litre MIVEC engine
- Invecs II automatic gearbox with Sports Mode
- Flexible seating for up to 7 people
- Unique Hide & Seat system™

From just **£13,999** sit back, relax, and enjoy.

Bill Penman

JHQ

Naafi Car Sales.

BFPO 19, 40, 109, 115, 140

02161 557789

John O'Neill

Elmpt

Javelin BKS.

BFPO 18, 26, 28, 35, 105

02163 81001

GRANDIS. THE NEW MITSUBISHI

DRIVE ALIVE





The Rheindahlen Bulletin, a monthly publication is published on behalf of the Commander Rheindahlen Support Unit and Commander Elmpt Station.

Editor:
Linda Butterworth
Tel. JHQ 3284.
Tel./Fax MG 955547
E-mail: rbulletin@freenet.de

Office Assistant:
Sandra Lynn
Phone/Fax 2106

Advertising:
RMC PRO 4789

Printer:
ARS Grafische Producties & Communicatie.
Slachthuisstraat 111,
Roermond, the Netherlands,
Tel. 0031 - 475 - 317652

All advertisements must be received by the 6th for inclusion in the next Bulletin.

Contributions must reach us by the 6th of each month, unless otherwise notified.

German address:
Rheindahlen and Elmpt
Bulletin
HQ RSU
139 Queens Avenue
41179 Monchengladbach

Distribution:
Via O/C SSO Elmpt on
(68)3634.

All businesses are invited to advertise in the Bulletin, which has a circulation of over 3.400 copies a month. The Editor hereby declares that the publication of an advertisement in the Bulletin in no way indicates or implies sponsorship by MOD or by any Service establishments or Unit, of the advertiser or of his product or service advertised, nor will the Editor, Staff or any Service Authority become involved in any dispute arising out of any advertisement appearing in this magazine. Furthermore, the Editor reserves the right to omit, amend or edit any advertisement or article at her sole discretion, without liability.

FRONT COVER

Happy 50th Birthday JHQ

Created with the help of Media Ops.



EDITORIAL

Some articles may seem familiar and some repeat information but, as this is the 50th Birthday Celebration of JHQ, no apology is necessary as all these, as a part of history, are well worth re-iterating. We all read articles for different purposes, so I have included the history in different formats – covering the formal accounts, eye witness recollections, notes scribbled years later and actual reminiscences. My sources have been just as varied; many hours have been wiled away as I searched through the Bulletin Archives I've kept since I came here; I have actually tracked down people who walked in with the initial build, relatives of those involved, documents and photos (such as exists – and that was no easy task!) as, despite my many pleas over the last 2 yrs through these pages, very little material was forthcoming. I am extremely grateful to those who actually took the time to contact me and yes, as I am still a frank Northern lass at heart, I must also add how disappointed I was not to hear from others here who I know have lived and worked here before. However, should these articles "ring bells", I would love, throughout the rest of this year, to print other memories.



I was "posted" to this area – to Kent School, Hostert, in fact, - in 1972 and JHQ is where my roots have been since then. Had I realised I would be here to see this 50th Birthday Celebration, I would have faithfully photographed and logged the changes that were taking place.

I'd love to run a permanent "Reminiscences" page – indeed I will for the rest of this year with some of the material I'm still holding. So, pick up the phone or write in to tell me of your memories as I'm sure there are many!

Apologies to those contributors whose material I didn't have space to include – they will go in the next magazine. *FW

HAPPY BIRTHDAY JHQ – 50 YEARS OLD



Not receiving your Bulletin regularly?

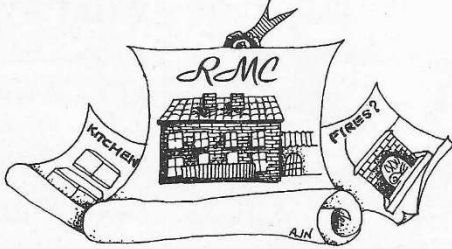
Ring JHQ 3284 and let us know!

WHAT'S WHERE

Advertiser's Index	44
Borussia	43
Careers	27
Cinema	27
Diary Dates	27
Exam Results Service	27
Features	2,5-6,8,13,17,43
Further Edu. Courses	33
Gardening Guides	39
Guiding	41
Happy Birthday JHQ	21-24
HIVE	39
Housing Notes	37
Library	28
Local History	2
Padre's Pen	34
Reminiscences	11,14,15,17
Scouting	31,35
Spotlight	43
Welfare Centre Trips	31
What's On	27
Why Not Visit	37
Wines Feature	28
Ye Olde Cure & Lures	13
50th Annivers. of JHQ	22-23

THE CONSTRUCTION OF THE RHEINDAHLEN MILITARY COMPLEX

As we saw last month, the Rheindahlener Wald was selected in August 1952 as the site for the new JHQ. The first works undertaken, beginning in October, were the laying out of the road network and the construction of 24 quarters for Service personnel involved in the build. Colonel Henry Grattan, the Chief Engineer, described these early days as follows:



"These houses were started on 4 November and occupied 5/6 March, four months later. This achievement and that of forcing the concrete roads ahead in winter can only be appreciated in relation to the weather, which the Germans likened to the Russian front. It was the wettest winter for 50 years, with November rainfall of 207% of the average. The German workman came to the rescue as he does at the grimmest times".

The principal reason for the sense of urgency was the need to submit DM bills against the Occupation Budget before the Bonn Convention brought the Occupation to an end. This led Colonel Grattan to comment: "If mistakes in planning have been made, it was because of the headlong rush. It will certainly be argued in the future that two or three storey barracks and messes should have been built, and would have been built, and would have been cheaper if more compactly sited, but in the early days the overriding consideration was to put to contract and pay running bills for every item of work for which standard designs already existed." These "standard designs" were those which had been used in the previous few years on OP HUMANE, the project to provide new buildings for the armoured divisions in the British Zone. The use of these designs simplified the task of the JHQ project managers, for it provided them with ready-made plans which could be used in Rheindahlen.

Originally provision was made for only 782 married quarters, but in mid-1953, it was decided to locate the British Intelligence Organisation (Germany) within the RMC, and to house its families; the 244 houses of the South-West Extension were built. Colonel Grattan remarked: "Servants are not easy to get in the Rhineland so in general the houses are designed to be run with the minimum of help, as at home. The architecture has many German characteristics about it, and is somewhat unattractive to our tastes. In concession to English tradition a fireplace was provided in the drawing-room of every officer's quarter. It is a much appreciated amenity. German architects thought we were queer!"

By August 1953 one house of each of the eight types of design had been completed, and their interior fittings and furniture had to be selected. To effect this, "committees of ladies, the wives of Army and RAF Officers and ORs, ranging from brigadier to corporal, were invited down to criticize. Particular attention was directed to the kitchen, which had been initially designed by mere men. There were several visits, and there was seldom much unanimity of opinion, but the average findings of the Committee were of immense value. Thereafter, we knew exactly what was required for the other 1,100 houses".

Major (Ret) R A Laird (RAEC) *FW

"Flashback" to September 1979

COLD WATER SUPPLY – JHQ RHEINDAHLEN

The cold water supply which serves JHQ Rheindahlen is taken from various boreholes located within the boundaries of the JHQ complex. The boreholes are about 40 m to 50 m deep and can produce 100 m³ of water every hour. The water is drawn off from the gravel and sand stratum which is approximately 25 m below ground level. The



The 2004 team

water is then pumped direct to a water treatment works. The first stage of the treatment involves the raw water being pumped into a spray aeration chamber. This process reduces the carbon dioxide and hydrogen sulphide content, and oxidizes the iron and manganese in the raw water. Secondly, the water is allowed to sink through filter beds, which consist of various layers of graded small stones (Dolomite). The Dolomite stone is alkaline, which helps to neutralize the acidic water, and remove the remainder of the iron salts. After passing through the treatment beds, the water is chlorinated and stored in a pair of concrete underground reservoirs, each having a water capacity of 2000 m³ (1 m³ = 1000 litres), finally the water is fed by gravity into two suction chambers and then pumped via pressure tanks at a pressure of 6 bars to the distribution network.

The water distribution network is made up of approximately 180 kilometers of pipework. The water is tested at the main outlet point in the water works, by the local German authorities. Every month bacteriological tests are carried out, and every 6 months chemical tests are carried out. In addition every 6 months, tests at various points within JHQ are taken. The water under normal conditions is soft, colourless, and the taste and smell is neutral. The water also contains no iron or manganese. The PH value varies from 7.4 to 7.7 (alkaline).

From time to time major breaks occur on the Cast Iron pipe system. The breaks immediately cause a change of pressure within the system, this in turn generates a turbulence of water within the pipes. Bearing in mind that the pipes are 25 (50 years now!) years old, the turbulence causes some discolouration of the water until the system settles down to its normal state.

Although this can be an inconvenience, especially to occupants of Married Qtrs, fortunately there are no harmful effects to the user. It is advised that the water is run off until the discolouration disappears; this should only take a short time to achieve.

Although the whole of the water supply at Rheindahlen is locally produced, it does cost money to pump, filter, store and deliver, so it should not be wasted and all leaks however small should be reported.

SAVE IT

GWA confirm that a lot of the original pipework has now been replaced.

(Editor)

WEEKEND BONANZA



STEEP DISCOUNTS

GREAT DEALS THIS JULY
FRIDAY 16 - SATURDAY 17 - SUNDAY 18

	FRIDAY	SATURDAY	SUNDAY
JHQ Max	0830 - 1900	0830 - 1700	1200 - 1700
JHQ Buschof	0800 - 2200	0800 - 2000	0900 - 2000
JHQ Marlborough	0800 - 2200	0900 - 2200	0900 - 2200
Javelin Supermarket	0830 - 2000	0830 - 1800	1000 - 1600
Javelin Express	0730 - 2200	0730 - 2200	0900 - 2200

All offers are valid 16/07/04 - 18/07/04, subject to availability and ration allowance at NAAFI Max, Buschof and Marlborough JHQ & Javelin Supermarket and Express. All details correct at time of print. Errors and omissions excepted.



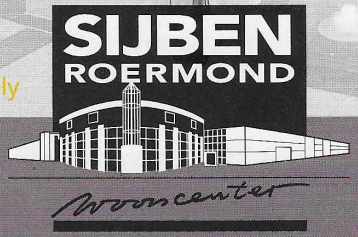
Serving the Services



Classic furniture

TAX FREE SHOPPING

- 30 minutes from Düsseldorf
- Free home delivery and assembly



Maasfelderweg 33, Roermond (The Netherlands). Tel: 0031 - 475 39 28 28 www.sijben.nl
Monday 13.00 - 18.00. Tuesday till Friday 9.30 - 18.00. Saturday 9.30 - 17.00.
Thursday late night shopping till 21.00.

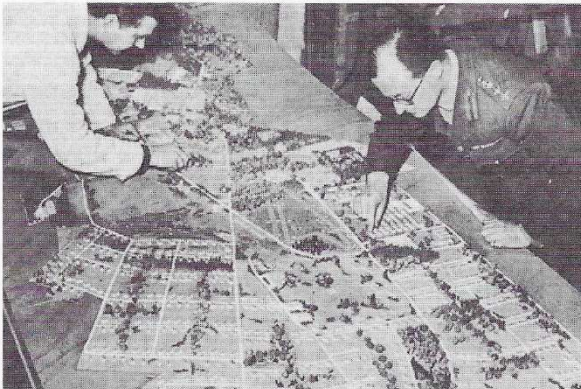
JOINT HEADQUARTERS, B.A.O.R.

The following notes, were written by Lt Col Biggs 10/12 years after JHQ was built

The Brief

- To build a new HQ at Rheindahlen the cost of Phase I not to exceed 12 m. D.M. not to spend any sterling and to spend 10 m. D.M. before 31st December, 1952, and the whole job completed in 18 months.
- The only sterling actually spend was for Chubb safes and cupboards.
- The 10 m. was spent by buying stores such as W.C. pans, sinks, baths, paving slabs, steel piping.
- Later, the work was extended to include the South West Extension, Schools, Clubs, Churches and other additional buildings for a further 48 m. D.M. but the time was not extended.
- This 18 months was important because up to end of this 18 months the money came from the Germans, after that it came out of British Occupation funds. Fortunately, the date of the introduction of the new scheme was put off until later in the year 1954.
- Early in 1954 it was agreed that the HQ would not be ready for occupation in July as originally planned, the new date was October and the move into the HQ building took place in October 1955.

BUILDING OF JHQ



Weather conditions

- The first Winter 1953/54 was the coldest for 50 years and the number of workmen went down from 7,000 to 56 – all night watchmen and foremen.
- There was a terrible storm in May, 3 inches of rain fell in 5 hours. The area bounded by A,B,C,D,E F messes, Fire Station, Cinema, had 4 inches of water all over, water 5 feet deep in A.K.C. Cinema, the recreation ground from the Swimming Baths to the Pavilion was 2' 0" deep in water about 200 yards wide.
- Queens Avenue in front of the Tennis Courts was about a foot deep in grass seed, washed off the newly sown area.
- The damage to trenches for heating ducts and drains was extensive and the severe damage was a set back to progress and one of the main reasons for delaying our first completion date.

THE JHQ SITE



was chosen in August 1952, surveyed in September and the first order was issued in October for 126 buildings (barrack Blocks, Messes etc).

- The only cultivated portions of the site were the small areas behind German Shopping Centre and the small area between the Other Ranks Hostel, (Now Salmond House) and the wooden hut at the end of Norwich Walk.
- The remainder was forest, or areas where trees had been cut down and were covered with gorse 10'0" high (the main recreation ground) grass waist high (the HQ Building) and brambles, heather and water.
- There were 6 horses on the establishment to get around the site.
- There were several small groups of fallow deer, a number of roe deer, as well as hares, rabbits, pheasant and duck. The high part of the recreation ground near the R.C. Church was one huge rabbit warren (mexamatotis killed them all off).
- The Area from the Boiler House behind the School up to Queens Avenue was swamp which was drained – the ducks were here.
- The Owner of the site lived in Haus Hellbach, was a lover of trees, had many fine specimens round his house and during the Winter put up shelters with food for the deer.
- Herr Linke the Forestmeister used to trap several deer and breed good stock in the corral behind his house and then let them loose.
- There was only one holly tree on the site – it was in front of Haus Helbach.
- There was no restriction on visitors and when the main roads were completed hundreds of local German civilians toured the site at week ends.
- Roman remains were discovered here.
- No. 4 Marlborough Road was the first Officers Quarter to be completed for one of the Site Staff. Work started on 1st December 1952 and was completed on 28th February 1953, a total of 3 months in the depth of Winter. It was occupied by Major White, R.E. and Wife and Daughter on 2nd March 1953, there was about 9" of liquid mud outside the front door!!!
- The first Site Office was the wooden hut at the end of Norwich Walk and every day the Union Jack, R.A.F. Flag and Royal Engineers flag were hoisted and lowered on their respective Flag poles.

- The Union Jack and Flagpole was given to the Camp Commandant.
- The R.E. Flag was lowered for the last time at 12.15 p.m. on the 30th July, 1956.
- The policy was to preserve as many deciduous trees as possible – the kink in Queens Avenue was to avoid the line of oak trees.
- Enormous trouble was taken to preserve two oak trees in front of the HQ Building, one was killed by lightning and after the H.Q. was occupied the other was cut down to allow a helicopter strip.
- Well over a million trees were planted on the site.
- A Nursery of 10,000 trees 4" to 18" high was planted near "E" Mess and Herr Linke, the Forestmeister, promised to look after them.
- Haus Heinen was evacuated by a Forester and two days later the walls only were left standing. Roofs, windows, doors, floors, all disappeared overnight.
- Colonel Grattan, (right) the Chief Engineer for the site was a "dowser" and found water under the site, bore holes were drilled, and the best of them chosen to supply water to the site.
- The cost of "Richtfest" (topping out ceremonies) was £7,000.



THE JHQ FOUNDATION STONE



- Was laid on 1st July 1954 by the Senior Officers of the Navy, Army and R.A.F. and each was presented with the silver trowels used.
- The wooden mallet used was given to Lt. Col. Biggs.
- The cost of the two stones (one is a blank) and lettering and delivery ready for setting was 709.60 DM.

- The cost of preparation for and laying the stone was 27420.00 DM.

THE FIRST MESSES ON JHQ

- 'F' Mess was the first one occupied in May 1954. Lt. Col. S. Biggs, R.E., was the first P.M.C., it soon became a kind of Transit Mess – the first lady members were 5 school mistresses headed by Miss Eileen McDonough.
- The first occupant of the Officers Hostel was a Polish lady expecting a baby.

THE JHQ CHURCHES

- The bells were cast at Gescher on 23rd March 1955, 2/6d, 6d, 1d and ½d were put in each crucible by Lt. Col. Biggs. The bell casters were given a bottle of gin and brandy to celebrate.
- The R.C. Bell was mounted and tested on 29th April 1955, the C of E Bell on 3rd May, 1955.
- The name of Lt. Col. S. Biggs, R.E. is cast on the rim of the R.C. Bell and Major (Rtd) J.W. Dix (The Superintendent of Works) on the rim of the C of E Bell.
- **The R.C. Bell** is inscribed –
Vivos Vaco Mortuus Plango
Fulgura Frango Ad Majorem
Die Gloriam.

"(I call the living,
I mourn the dead,
I free those who are in bonds
To the greater glory of God)".

- **The C of E Bell** is inscribed –
Praise ye the Lord from the Heavens:
Praise Him from the Heights.
- All of the Members of the Siting board for the three churches, President and Members, were Service Chaplains.
- All the churches were designed by an Architect named Varvaroskk – outstanding name in the Architect world at that time.
- The Other Denominations Church (St Andrew's) was the first one opened by the Reverend Jarvis, Moderator of the Church of Scotland. He preached a sermon – the text of which was "There is a river" and a brass plate was fixed in the church to commemorate this. The Church was not completed, the floor and roof were incomplete.
- The first Services in the R.C. and C of E Churches were on Sunday, 19th June 1955.
- The first marriage was a Major of Signals and a Major of W.R.A.C.
- The copper work in the belfreys were washed over with the salty water from barrels of herrings – to make them turn green more quickly.
- The pews are disappointing, they were uncomfortable and hard. Unfortunately the "mock-up" or "sample" was not produced, the completed article was delivered in bulk.

Tax free available

Extended Reading Range with Clarlet Business

Demands on our Vision at Workplaces

The demands now being made on our vision in everyday life are constantly growing. The increasing number of computer workstations requires specially designed lenses to cater for the constant movement of the eyes between the screen, keyboard and manuscript. Clarlet Business is a reading lens which has been specially developed to take into account both the typical movements of the eyes and typical workplace configurations. There are also numerous leisure activities, such as painting, handicraft work or even a large dinner party, which required extended ranges of vision.

In short: Clarlet Business is suitable for all presbyopic patients who want to broaden their horizons.

We would be pleased to help you select the best reading glasses for your requirements.

Tel. 02161 54 11 69

Opening times:

Tue-Fri 09.00-13.00 hrs and 14.00-18.30 hrs
Sat 09.00.13.00 hrs

and by appointment



RH/408d

Visual impression **without** and... **...with** Clarlet Business®

eyebiente

The Art of Seeing

Volker Mühmel e.K.

State-certified Optician and Master Optician

Bahnstraße 277
near Ayrshire Barracks
Mönchengladbach-Holt

www.eyebiente.de

COBBLER SHOP

Tony Northern (Master Shoe Maker)

C/O QM Dept

RSU JHQ

BFPO 40

Tel.: Mobile 01754945208

Mil.: JHQ Mil 2313

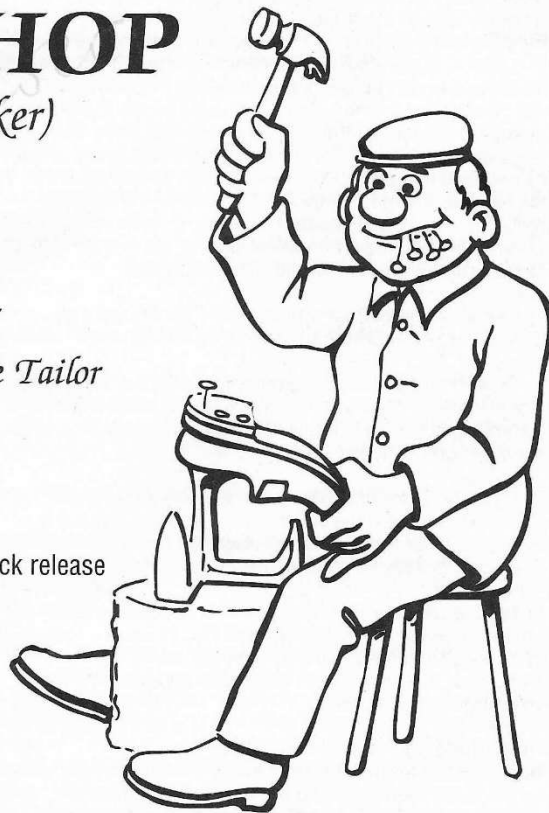
*The Cobbler Shop can be found
behind the RSU QM Depot next to the Tailor*

Services Available:

- Repairs to all Civil and Military Footwear
- Small repairs to leather equestrian equipment
- Retail Gents, Civil and Military footwear
- Alterations to Sam Brown Belts and Clipping for quick release
- Soft Bee Waxing
- Repairs to most leather wear
- Repairs by post

Opening Times

Tues - Thu 09.00 - 13.00 and 14.00 - 16.00
Fri 09.00 - 13.00 and 14.00 - 16.00
Sat 09.00 - 13.00



RH/478

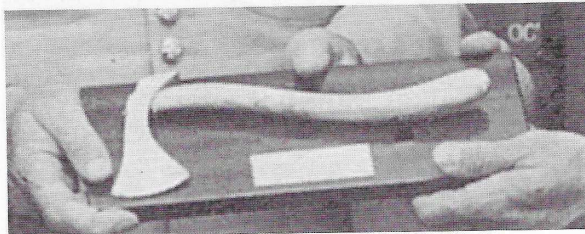
FLASHBACK

In Sept 79 the Bulletin printed this article by J C Thomson to celebrate the 25th Anniversary of JHQ – 4 Oct '79

The Rheindahlen Base: The base itself is one of the largest military complexes in the world. The Project Officer was Colonel H Grattan CBE, who also gives a very interesting account of the complex building project from site selection to building completion, in his book, 'New Headquarters in Germany'.

Historical and Archaeological Data: The locality has a long military association spanning the centuries; the earliest written reference being made by Julius Caesar in his 'Bellum Gallicum'. Some interesting facts are given below:

- a. A Roman road follows the southern border of the base; a Roman well and pottery works were discovered by Colonel Grattan's engineers during the early excavation work.
- b. A burial ground dating from the 2nd century is located within the area bordered by the officers' messes.



- c. **The Rheindahlen Axe** – the original axe was discovered in a field about 1 kilometre along the road to Waldniel. The replica of this axe, held at JHQ, was made by pouring a mould into the ground for the head and shaping the handle to conform to the stain left by the rotted shaft. This type of throwing axe can be accurately dated to the period 450-525 AD. It is one of 2 types of missiles used by the Franks who occupied the area of the lower Rhine at that time. The axe was taken as a symbol of HQ NORTHAG due to the similarity between that period and the present. In 451 AD, Attila the Hun led a large, composite army out of the Danube basin, crossed the Rhine and invaded Northern Gaul. He was finally defeated by an allied army of which the Franks formed part, under the Roman General Aetius.
- d. The local village of Peel was known to the Romans as 'Paladus' (a swamp).
- e. In 1354, Rheindahlen was granted the status of a town by Count Wilhelm of Juliers who was created the first Earl of Cambridge by King Edward III in 1340, in recognition of his services to the English Army.
- f. In 1703, the Duke of Marlborough billeted some of his 19,000 Redcoats in the Rheindahlen woods. This party consisted of Dragoon, Dragoon Guards, Artillery, Engineers, The Royal Scots and other infantry regiments.
- g. In 1813, Alexander II of Russia sent a 300-strong force of cavalry to assist Wellington against Napoleon; a Cossack cutlass bearing the initial and crown of Alexander II was found near the site office in 1953 (one hundred and forty years later!).

The JHQ Building

- **Site** selected from a choice of five within the triangle formed by Aachen, Roermond and Monchengladbach on 8/9 August 1952. First foundations were dug and drainage started on 9 April 1953, after the forest had been cleared.



- **The Foundation Stone** was laid jointly by the Flag Officer Germany and the Commanders-in-Chief of NORTHAG and 2ATAF, on 1 July 1953.
- The completion of all roof tiling was done by 30 September 1953 after only 5 months work! The JHQ building was occupied on 4 October 1954. The entire project is unique in that one Chief Engineer and his staff were able, in the course of one military appointment, to assist in site selection, plan the site, see it built, occupied and working.
- The very rapid building progress should also be seen against the weather conditions prevailing at the time – records show that in November 1952 – when the roads and water mains had started – rainfall was 209% of normal.
- The winter of 1953/54 was the most severe for 39 years and a severe frost gripped the site for 6 weeks from 23 January until the end of March. Most of the rivers in Germany were solid roads of ice and the Rhine itself was a mass of pack ice for several weeks.
- The successful completion of the project within such a short time scale and against such adverse weather conditions was certainly a mammoth achievement. The project was built to Joint Service specifications by the Royal Engineers and over 2,000 German contractors.
- The Headquarters building has approximately 2,5000 rooms and, for the statistically-minded, the main corridor is 300 yards long and there are many others of 100 yards. The German telephone engineers estimated that they had to solder 20,000,000 joints in the wiring of the telephone system. In addition there are 70 miles of high and low pressure water pipes which provide central heating and hot water to all buildings and quarters.

ARE WE GETTING IT RIGHT?

DO WE MEET YOUR NEEDS?

THIS MONTHLY MAGAZINE IS PUBLISHED FOR YOU ALL
YOU DO HAVE A VOICE!
PLEASE USE IT.

CONTACT THE EDITOR ON JHQ MIL 3284

OR

THE OFFICER I/C - SSO ELMPT - ON ELMPT MIL 3634.

STAR HOUSE FURNISHINGS



Picture Framing
and Engraving available

RH1266C

Visit our **NEW**
Showroom at
Javelin Barracks
next to the
Conference Centre

Come
and
see
our
many
Special
discounts



JHQ
43 Trenchard Road
D-41179 Mönchengladbach
Tel. (+49) 02161 - 558234/556259
Fax (+49) 02161 - 550613

OPENING TIMES:
Sat 1000-1600 Mon CLOSED
Tue - Fri 1000-1400 / 1430-1730

Picture Framing
Engraving
Quick Service

NEW COLLECTION!

100%
massiv oak!



TAX FREE
+ FREE DELIVERY!

Lay away
possible!



Sunday
OPEN!!

FLÄMISCHE EICHENMÖBEL

3640 KESSENICH / Belgium • Venloosesteenweg 393 • Tel. 0032 / 89 568855

Opening hours:
Saturday + sunday 10.00 till 18.00
Weekdays 9.30 till 18.30-Closed on monday

From cloverleaf junction Mönchengladbach(45 km),
direction Roermond A52, then direction Eindhoven N280,
Exit Maaseik N 273 to Kessenich

E-MAIL:interhome@pandora.be • WEBSITE: www.flaemische-eichen.com



Insurance & travel
the best of both worlds

O. GIRKE
Insurance & Travel

Party Fun with CLUB 18-30

WEEKEND BREAKS

Disneyland, Mosel, and numerous City Breaks

SELF DRIVE HOLIDAYS

France, Italy or Spain

**Great UK and German
HOLIDAY PACKAGES**

LUXURY HOLIDAYS

4 or 5 Star Hotels available

FAMILY GETAWAYS

Great Packages - Huge discounts for children

ACTIVITY HOLIDAYS

Golf, Tennis, Mountain Biking

CENTER PARKS

**LAST
MINUTE
DEALS
AVAILABLE**

O. GIRKE
Insurance & Travel

Contact your nearest office and find your
dream holiday

RH/157C



www.o.girke.com

A REFLECTIVE LOOK AT LIFE IN JHQ RHEINDAHLEN IN THE EARLY 1970'S

Absolutely everything was provided

Life in Rheindahlen Garrison was pretty good then too. It was clear that the whole camp had been purpose built to accommodate four HQs and all the families probably without motor cars in the beginning. There was the left-over of arrangements for batmen to attend the married quarters and the need for domestic assistance to cope with washing clothes and all the table linen and sheets and towels in the cellars because washing machines had not arrived before 1970. It was clear that absolutely everything had been provided in the quarters including Blue line crockery and all sorts of glasses, sherry, wine, champagne, liqueur, port, spirit and tumblers for beer. You could arrive off the Harwich to Hook of Holland ferry and on to Moenchengladbach by rail with just a suitcase and live in the garrison until your main uniforms in your trunk arrived later.

A complete town

The quarters were well heated off the central boiler and you paid through a complicated arrangement including an X and Y factor to cover for winter and summer. By early 1970 some of the pipes were ageing and the bath water was often muddy. Down near the central boiler house there was also a Nursery / Garden Center where you could buy plants and order logs to be delivered and put in the cellar to burn on the open fire. The debate went that there were no garages because open fires had been an overriding priority in the budget from the reparation funds. We also had deliveries from the NAAFI and a local baker used to drive round in the early morning and throw a bag of 'brotschen' at the front door from his old Mercedes. The grounds and the woods were kept clear and neat and there was no question of the number of grass cuts per year – it just happened. The trees now are much higher than the roofs of the quarters and the woods behind the gardens are truly overgrown. The main cricket ground was always mown right across the whole area and only the rugby pitch was left to grow just at the start of the season whereas now the whole area appears to be one large rugby pitch.

The Officers Club

The area in front of the JHQ building was all grass and there were the traces of a short nine hole golf course laid out by a group of enthusiasts. The building opposite the theatre, (now the "Rheindahlen Rooms") was the Officers' Club where soft music from a live group played during dinner. There were suggestions that a swimming pool should be added to attract more custom but the end of such a facility was in sight anyway as times changed and people wished to dine out and everyone had cars to exercise their freedom.

Calling Home

Communications - there were hardly any private telephones in the married quarters and to make a call to the UK one had to book in advance through the military exchange and proceed to the Visitors Mess to make the call. When your turn came up you were directed into a kiosk and given 3 minutes to complete your business or social chat. Most communication was done by letter.

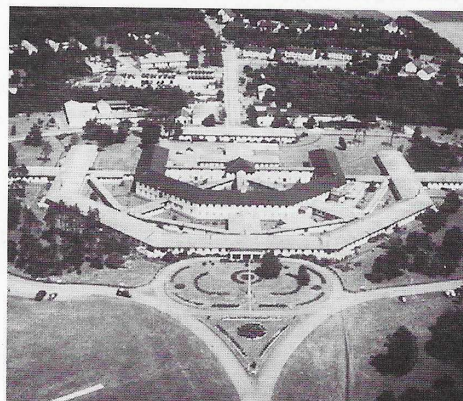
Newspapers came from the UK and could be purchased from the YMCA but there was a waiting list to be able to have your paper delivered to the office. I seem to remember that we still had the airmail version of the Daily Telegraph sent by post at the start of our tour.

Theatres

Around the garrison there were more theatres than now. We had the Globe (Army) and the Astra (RAF) cinemas and also the main theatre (now a car park opposite the Rheindahlen Rooms) for the RATS (Rhine Area Theatrical Society) and the

Operatic Society. We used to have a starter and main in someone's house and then have the pud and drinks in someone else's house after the performance.

RAF Hospital



The RAF Hospital at Wegberg was most important for the community as a whole as well as the RAF aircrew from the clutch airfields who often needed attention. Many children were

born there. Care needed to be taken over registration to ensure their later passport applications were not delayed as a result of a birth outside the UK.

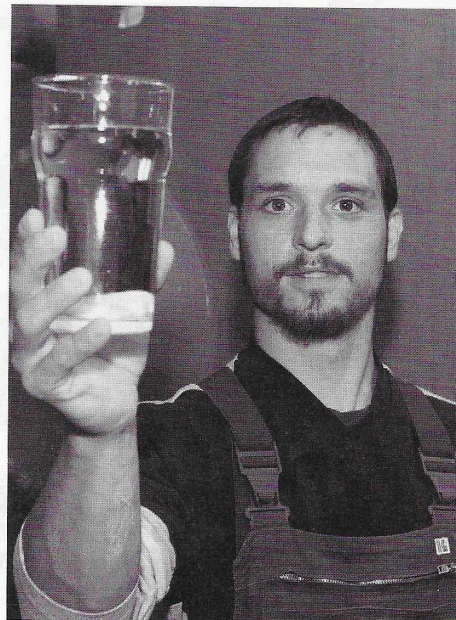
Col (Rtd) M. Walker 10 June 03
(Updated by the Editor)

OUR WATER SUPPLY SYSTEM

Perhaps the most interesting & astonishing feature of Rheindahlen is its water supply system. Whilst working on plans for water supply from Rheindahlen town, Colonel Grattan learned that a well in the middle of the site was yielding good water at a depth of 7 metres.

Col. Grattan's curiosity as an engineer prompted him to order quite extensive bore exploration to be carried out. Local German advice was that geologically it was not feasible to find water in sufficient quantity for public supply; Col Grattan persisted and found extensive water in a large area some 20 metres underground.

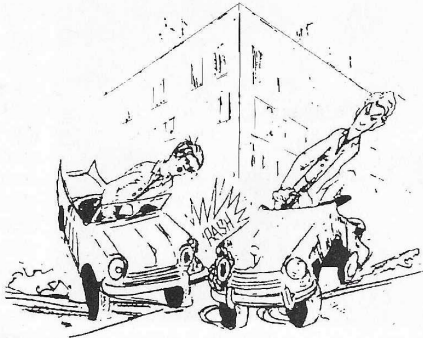
"The rest," as they say, "is history"! There is a seemingly unending supply of this water.



www.culpeck.com

CULPECK INSURANCE 

ESTABLISHED FOR 40 YEARS



'Service with a smile'

Army Plan AXA
USMIA Generali

- * 5 Star Accident Plan entitles you to a FREE courtesy car whilst yours is being repaired.
- * Efficient and friendly service
- * All types of Insurance available
- * Competitive rates and easy monthly payments
- * Immediate quotes and instant cover
- * Huge second car discounts
- * ADAC Membership
- * UK Covernotes issued

ADAC

MEMBERSHIP
ETC. ON THE SPOT

Any German Net Query, such as what to do when going from BFG onto German Net please ring RICHARD on 02451 - 2983

SHOPPING CENTRE JHQ
41179 MÖNCHENGLADBACH / RHEINDAHLEN
TELEPHONE 02161 / 559655 - FAX 550473
Mon to Thu 09.00 - 17.00 hrs, Fri 08.30 - 16.30 hrs

ALSO AT:
GRANDY ROAD 356, JAVELIN BARRACKS
41372 NIEDERKRÜCHTEN ELMPT
TEL. 02163 572148 / FAX 02163 572148
MON - FRI 0930 - 1630

Mary Kay Cosmetics

HAVE A FUN NIGHT IN WITH
YOUR FRIENDS,
AND HOSTESS
a Mary Kay
Pamper Workshop.

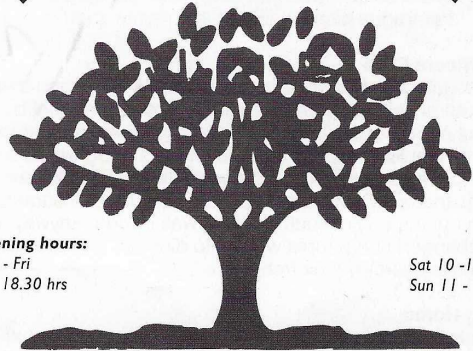


FIND OUT WHAT'S NEW FOR
SPRING/SUMMER 2004 AND
personalize your Look
WITH THE NEW Mary Kay
colour range!

*Our consultancies are
of course Free!*

Call Independent Beauty Consultant Sharon & Team.
Hermann-Löns-Strasse 9 - 41372 Niederkrüchten
(10 mins from Javelin Bks, 15 mins from JHQ)
Tel. 02163/31564 or Mobile 0170/3219601

FARMSHOP BUSEN
www.hofbusen.de



Opening hours:
Mon - Fri
10 - 18.30 hrs

Sat 10 - 13 hrs
Sun 11 - 17 hrs

200 m² Farmshop

5 Types of Fresh German Apples € 0,99 Kg
New baskets in fresh spring colours /
Delicious potatoes

HOME-MADE: Jam & Jelly and Sausages, Mustards from
Monschauer Mustard Mill, Home reared Ham, Pork and
Beef, Fresh bread every Thur/Fri/Sat

Vorster Str. 354 - 41169 MG-HARDT • Tel. 02161 557257
A 52 direction Mönchengladbach-Hardt, right, at first traffic light left. About 300 m left side.

LAYING THE FOUNDATION STONE FOR JHQ

The Foundation Stone, (see front cover & middle pages) was laid on 1st July 1953, by the then Commanders-in-Chief and Flag Officer Germany – yes the Navy were here too then! – and the Headquarters itself was occupied on 1st Oct 1954.



Photo left to right – Rear Admiral R St V Sherbrooke, General Sir Richard Gale, Air Chief Marshal Sir Robert M Foster

PLEASE NOTE

OUR NEXT MAGAZINE IS
A JOINT AUGUST/SEPTEMBER ONE.

THIS WILL BE PRINTED ON OUR PRINTERS RETURN
FROM HOLIDAY AND SHOULD REACH YOUR QUARTER
BEFORE THE END OF AUGUST.

NEED HELP WITH AN ARTICLE OR PHOTOGRAPH?

DO YOU HAVE AN EVENT COMING UP?

IF SO, CAN WE HELP YOU
REACH AS WIDE AN AUDIENCE AS POSSIBLE?

CONTACT THE EDITOR ON JHQ MIL 3284/2106
OR THE RMC PUBLIC RELATIONS OFFICE
ON JHQ MIL 4789/4795.

YE OLDE CURES AND LURES

For interest and possibly amusement, here is a selection of pre-legislation methods of pest control taken from an old house-keeping book, well worth a try!

FLIES

Hygiene is the best way of preventing flies and stopping them from breeding. If you've no control over the source, hang bunches of basil and mint to repel them or make your own fly papers as follows:

Warm 8fl oz of rapeseed oil and 3½ oz of resin, standing the container in a bowl of hot water. Spread thinly on to paper while still hot, cut into strips when cool and hang them from the ceiling.



To prevent flies buzzing round the windows, polish the panes with a little liquid paraffin, buffing with a clean cloth.

MICE

A good way to deal with mice is to get a cat, but if you don't have one you can always try these traditional tips.

Plug mouse holes with a cork dipped in turpentine or cayenne pepper or use balls of brown paper or newspaper dipped in eucalyptus oil. To protect food, scatter cayenne pepper on larder shelves.



MOTHS

Moths dislike printers ink so wrap coats and heavy clothing in tissue paper followed by newspaper for storage. You can also use cedar oil to repel moths.

Pour a little cedar oil (available from herbalists) into a saucer or jar and leave in wardrobes and cupboards. (It will evaporate slowly and need replacing from time to time).

ANTS

Boiling water poured on the nest has the greatest effect, but if you can't find the nest, sprinkle the runs with cayenne pepper, cedar oil, fresh bracken or a mixture of 1 part sugar to 2 parts borax.

Alternatively, you can make an ant trap.



To make an ant trap, spread the inside of a paper bag with marmalade and place it open where you see the ants appear. Leave overnight. Close the bag firmly next morning, when it should be full of ants and burn.

BEEES AND WASPS

Try not to destroy these insects – they are harmless unless provoked:

Try to restore bees to the garden. If they are buzzing against the window, place a glass against the pane and slide a sheet of paper between the glass rim and the window.

Then you can carry the bee outside and release it.



If you are besieged by wasps, line your window sills with wasp-traps made from jars filled with a mixture of water, detergent and jam or honey. They will attract and drown the wasps.

COCKROACHES

This is also a useful way of preventing ants and silverfish.

Scatter borax or pyrethrum powder (made from chrysanthemums and available from hardware shops) over crevices, cracks in the floor and any trails you can see, to deter cockroaches.



ST. ANDREWS CHURCH REVISITED

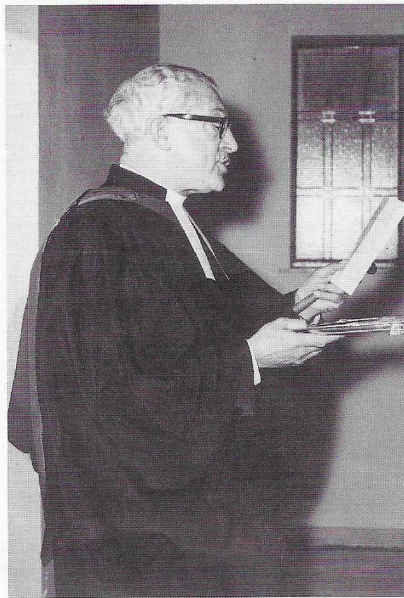
In Oct 99 Laurence Goudie revisited JHQ. During his National Service he served in the Admin wing at RAF(H) Wegberg from July 54. He writes:

"The Visit brought back many vivid memories of St. Andrew's Garrison Church, the laying of the foundation stone of the present sanctuary, the memorable service of Prayer and Thanksgiving on Sunday 1st May, 1955 when the first service of worship was conducted in the unfinished shell of St. Andrew's and the Very Revd. Ernest d. Jarvis, MA,DD, Moderator of General Assembly of the Church of Scotland, preached on the



text "There is a river..." which was later incorporated in the panelling of the chancel. Dr. Jarvis's brother and niece were both my parent's physicians at that time. Later, on the 2nd November, 1955 I was again privileged to attend the Dedication of St. Andrew's when the Revd. Dr. W.E. Sangster, MA, PhD, Ex-President of the Methodist Church dedicated the then completed church building.

This was some six weeks prior to my return to the U.K. on the completion of my National Service. I was stationed at the RAF Hospital at Wegberg in the Administration Wing from July 1954. Wegberg had a resident C of E Chaplain and the "Free Churches" Chaplain was stationed RAF Wildenrath, ministering to the RAF stations of Geilenkirchen, Wegberg and Wildenrath. Sunday morning worship was for a group of us at St. Andrew's Rheindahlen, and in the evening we travelled to St. Andrew's RAF Wildenrath. On reflection these were times of outstanding fellowship, despite the restrictions of the times and the changing political and social scenes in Europe".



Revd. Dr. W.E. Sangster, MA, PhD

HAIRBY COLLORS

For a new style and a good haircut come to collors

Where an English speaking team is waiting to give you advice on your hair!



RH/415

- Cut & Blowdry € 24,50
- Colour € 24,50
- Highlights from € 14,00
- Perm, Cut & Blowdry € 62,75 - 75,50



Call for an appointment

- Open: Mon 13.30 - 18.00
- Tues, Wed, Fri 8.30 - 18.00
- Thur 8.30 - 21.00
- Sat 8.30 - 17.00



**NEERSTRAAT 75 - 6041 KB ROERMOND
TEL. 0031 475 332476 - FAX 0031 475 331001**

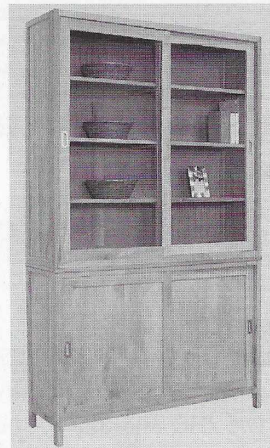
HAIRBY COLLORS

We offer you a large selection Teak from India and Indonesia

RH/1080



**Maasnielderweg 15
Roermond, Netherlands
Tel: 0031-475-311238
www.erwil.nl**



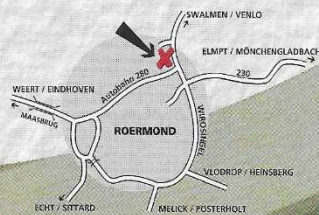
Monday CLOSED
Tuesday till Friday 09.00-18.00
Saturday 09.30-17.00
Thursday evening till 21.00

Directions: Take the road to Roermond. At the first set of traffic lights (BFG corner) go straight on, follow this road (Elmpteweg) to the next set of traffic lights, once again go straight on, Erwil is the second shop on the right hand side.

We also sell a wide selection of ornaments and gifts.

5000 m²
living and sleeping
TAX FREE PRICES

Your way
of living!



Den Elzen
MARLBOROUGH CENTER

FURNITURECENTER
Den Elzen
DIFFERENT STYLES UNDER ONE ROOF

DREAMWORLD
BEDROOM FURNITURE

OPENING HOURS:

Mon. 13.00-18.00, Tues/Fri. 09.30-18.00, Sat. 09.30-17.00
Late night Thurs. 21.00

Burghoffweg 30
6042 EX Roermond
The Netherlands

Tel. (+31) (0)475 32 07 22
Fax: (+31) (0)475 32 80 87
E-mail: info@den-elzen.nl

www.den-elzen.nl



Editor

EDITOR'S FURTHER MUSINGS ON JHQ

- Those glorious cherry trees outside the Big House were the idea of Herr Schulze-bierbach, chief Forstmeister, at the time.



- Where the Rheindahlen Bowl is now situated, the DEL Hostel was located and here the single German workers lived. They had their own Doctor- Dr. Pepsinski who worked there from 1954 – 1990 until her retirement.

- The married workers could apply to the DEL Housing Committee to be housed in Hardt and Krefeld. The housing, run by the Bonn Government, was financed by 2 Building Societies, one in Moenchengladbach and one in Krefeld. The British Government is no longer responsible for these properties.

- The Oase is a canteen for DEL's who work in the RMC. Many of the old retainers still come back for their Sunday lunch there.

- Have you ever visited the waterworks? The "Jewel in the Crown" of the RMC. Countless millions have been saved as we have never needed to pay for the water we use here, thanks to Colonel Grattan's water-divining skills. We have the cleanest water in North Rhine Westphalia. TUV tests reveal we have an extremely low level of nitrate.

- From 1 April 1990 MOD became responsible for the maintenance of the infrastructure of the RMC.

- During October 91 Kent School at Hostert was handed back to the Federal Authority.

Material gleaned from past Bulletins.

Complexions
COMPLEXIONS

Beauty Salon, 24 Marlborough Road, JHQ

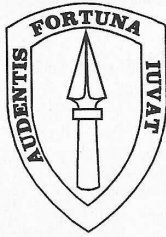
Tel: 02161 828458

Web: www.complexions.de/E-mail: enquiries@complexions.de

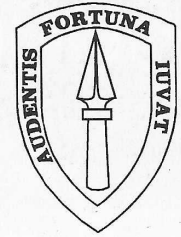
Manicure, Pedicure, Electrolysis, Waxing, Ear Piercing,
ST. TROPEZ Self Tanning Treatments, SUSAN MOLYNEUX
Facial & Body Treatments including Galvaderm & Micro Facial Treatments

- **NON SURGICAL LIPOSCULPTURE** – non invasive treatment for the Reduction of fat & cellulite!!!
- **GIFT VOUCHERS AVAILABLE**

PH/400/C



**SUPPORT BATTALION
HQ ARRC
PRI SHOP
BAND WALK JHQ**



In addition to being stockist of Barbour, Portmeirion, Denby and the only place in town to get your military kit

YOUR PRI NOW STOCKS ALL THE LATEST PERFUMES AND AFTER-SHAVES.

TOP BRAND NAMES

CLARINS
PARIS

MANY MORE IN STOCK

L'ORÉAL

LANCÔME
PARIS

Calvin Klein



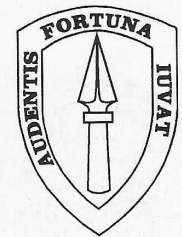
Opening times:

10.00 - 16.00 hrs Mon - Tues - Wed - Fri
Late night Thurs 10.00 - 18.00 hrs



RH/058

The Café on
Band Walk 13
is part of the
ARRC PRI Facility.



OPEN: Monday to Friday 9AM – 3PM. Last orders for hot food 2pm.

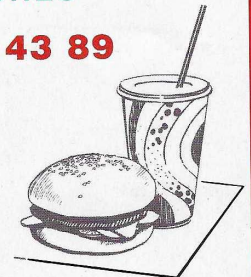
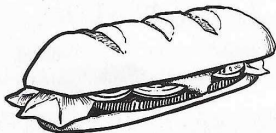
• BREAKFAST BAGUETTE • TOASTED SANDWICHES •

Booking, phone orders, tel. 02161 - 575 43 89

Freshly made:

- Jacket Potatoes • Rolls
- Sandwiches • Baguettes

All Hot and Cold Filled



• ALL DAY BREAKFAST • SOUP OF THE DAY • PIES, PASTIES & BURGERS •

Come and Sample our Menu

RH/058B

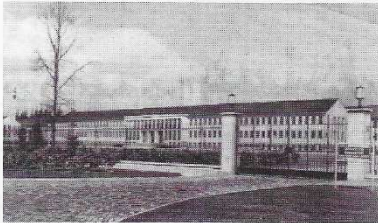
50 YEARS' REUNION NATO HEADQUARTERS RHEINDAHLEN 1954 – 2004

Margaret Crisp

How I experienced the very beginning

How did it all start? Who can recall the very beginning when thick bushes, heather and forest covered the area which became the Rhine Army and NATO Headquarters Rheindahlen?

In the **early 1950's** German building contractors started digging with heavy machinery to build what was to become a real town with military and family accommodation and a complete infrastructure. In the centre arose the huge Headquarters building, later to be known as the "Big House".



The "Big House" as we knew it

In **February 1954** the German Bundespost offered training for English speaking girls to become tele printer operators in Headquarters. This special course ended with a typing test. I was one of the first to take part.

On **October 4th 1954** we, the tele printer pioneers, began our duty in the "Big House" with 13. Six Bundespost ladies had already started work in the Telephone Exchange on September 22nd. Passport photos were taken for our special entry permit and I must have been naughty when I left, because I still have mine. Five questionnaires had to be filled out with questions like:



"Les" girls with Margret on the left

"How many languages do you speak?"
"Which languages?"
"Have you got relatives in East Germany?"
"Have you ever been to Russia?"
We "local" girls weren't the

only ones. Girls from Bielefeld, Herford, Osnabruck, bad Oeynhausien, bad Salzuflen and Dusseldorf had come, too, to be followed by others from Essen, Krefeld and Kaldenkirchen. Those who had come from further afield were given rooms in blocks near the "Oase", a restaurant where everybody could have lunch in exchange for meal vouchers.

Teleprinter Room

The teleprinter-room was a big room with a desk for either the German boss, Herr Rehm, later Frau Heynen, or the supervisor in charge; a telex through which we received "the weather forecast for North Rhine West falia and Berlin", in the early morning; a big round clock with a red Z to remind us that all messages had to be transmitted at Zulu-times; chairs and long tables on which there were many T-68 printers connected to several towns in Germany and abroad, as well as copy-machines and the tape-factory linked to 8 small machines, where I used to sit

and type unclassified messages in their various degrees of priority, however, to different addresses but with the same text, most of all ciphers with more than 1000 groups which were then routed to the different machines. Only the serial number had to be printed in front of each tape. One day we were shown a rather tiny machine which enabled us to transmit the photos of criminals – and as a test we chose a photo of O.W. Fisher, a well-known German actor, whose film... "And nothing but the truth", was shown in October 1958.

At manoeuvre-time in spring and autumn, being a French speaker, I had to work on the Croydon Ltd field-printer. Now and again the mechanics, Herr Wunsch and Herr Lux, had to look after those machines when messages were either scrambled or the cables overheated and started burning. Finally a test had to be carried out by the numbers from 1 – 10, followed by the so-called "**Kaufenschleife**": KAUFEN SIE JEDE WOCHE VIER GUTE BEQUEME PELZE X Y or the English sentence: NOW IS THE TIME FOR ALL GOOD MEN TO COME TO THE AID OF THE PARTY to test all the letters of the alphabet.

Mr Norris, a London postal official, used to oversee the tape-factory as his main task. Only the quickest typists were allowed to work here. He reported slow typists to the German boss. That's why only 10 out of 50 used to type there in shift – work, although the open book on the boss' desk told all of them on which machine to work. But Mr Norris also tried to save our work-places as there was less and less work to do in 1958. In Signal Centre there were two more working places: "Routing" (The front secret letters of a tape had to be recognized and then put into the right pigeon hole) and "Clearance" where the finished tapes were hung up and filed.

I can still vividly recall Miss Baylis, Greta, a "Real" Sgt Major who used to march around, a cigarette between her lip, giving orders in unmistakable military terms.



Checking the tape

The first 6 weeks in "Signal Centre", were terrible. Tapes were thrown into the bin and fetched out again the next day. I thought I was in a "mad-house". Amongst all this we noticed one day, that a

girl who lived in one of the rooms in HQ hadn't come to duty. We discussed the matter, and one of us cycled down to check. Dear me! Because of a love affair she had taken tablets to poison herself, but we had been quick enough to save her life.

Some funny things happened too

At Christmas time mistletoe was hanging from the ceiling of the teleprinter-room. An elderly well-nourished officer placed himself at the entrance door. We knew what would happen if one of us would leave the room. As nobody went out during the next two hours, he gave up. We are also sent mathematically worked out picture telegrams at Christmas time.

During those 4 Years and 3 months in Signal Centre young officers came for short periods to gain experience. Their small office was only separated from ours by a glass window. I still remember the big black Labrador that didn't leave the office for 3 days because its master had been in charge of some military matters. All the teleprinter girls fell in love with a young good-looking officer we called "Little Andy". He looked ever so sweet when he entered the teleprinter-room with sleepy eyes and on

grey woollen socks at 7 o'clock in the morning. We also tried to attract the attention of Lt. Eric Fry. Another officer we called "Baby Face" because of his round features. He was quite nice to us girls, but we still didn't like him as he treated the soldiers ever so badly.



The Signals boys

Once, after midnight, being on night-shift, the Military Police rushed into Signal Centre and searched underneath the tables for unauthorized people. As soon as they had gone, I found out that

two of our girls had locked themselves in the toilet. They had been to a party, missed the last bus to Monchengladbach and decided to sleep in our lounge in the cellar. Our supervisor, Ruth Mecklenburg, soon cleared up the problem. My final flashback is of how long it was to "Tipperary", (the toilet) – that we once smuggled a bike inside to ride along the endless corridors.

During a holiday when the "Big House" was closed, we explored the other 8 blocks.

Telephone Exchange



The girls from the Exchange and Signals at their 40th Reunion

We were good friends with the Bundespost-girls from the Telephone Exchange opposite, where I also worked for several months before taking over the printers in APO (Army Post Office) in May 1959. The Telephone Exchange, a long small room, contained a table for the German Supervisor, FrI. Bockermann, a second one for Sheila, a plump smiling British supervisor with glasses, who answered the enquiries and on for Mrs Frazer's "fault control". A switch-board which enabled 24 girls to connect British and private subscribers within Germany or abroad, nearly filled the rest of the room. The calls were either "official" or "private" and had to be taken down on a small label. At a special time in the evening the so-called "social bookings" had to be dealt with. British subjects were allowed to speak to their families in England for 3 minutes. The time had to be checked exactly by pressing a white button to tell the subscriber: "Terminate, please, the time is up!" Lights on the switchboard – the subscribers – had to be served by stopper-connection, saying: "Rhine Army, position 15" or whatever position it was. It was whilst connecting outside calls when I first made contact with my later husband. Tiny red lights had to be served at once with the words: "Rhine Army Red Line" and the position number, as Red Line signaled the senior officers in Headquarters. In the very beginning I was a bit

frightened, but especially those officers were in particular extremely friendly. Only once, a normal subscriber troubled me: "I want Krefeld!" he shouted in an unfriendly way. But a SWF-call (a long distance dialing) had to be booked and paid by the subscriber himself. I disconnected him, but he didn't give up. So I called Sheila, who then took the mickey out of him and made me laugh when she called him a poor man who couldn't pay 30 Pfennigs for a telephone call.

In the Exchange there was a lot of work to do during the day and some calls had often 30 minutes delay. On Saturdays, however, there was time to make some fun.

APO



Our APO

Most of all I liked the APO on Queens Avenue. There were neither night-shifts nor messages, but private telegrams over two printers. We used the NATO

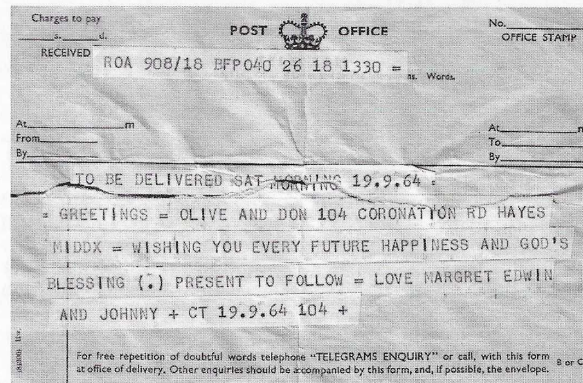
alphabet on the phone to prevent mistakes – the last one to Herford ending: "This is the final telegram from teleprinter terminal Rheindahlen". Some of the WRACS – girls (Women Royal Army Corps) – I still remember Margaret, Maureen, Pat O'Dweyer, Brian O'Dell and "Tulip" as we called her – had to help us taking telegrams on the phone. Other telegrams came from the counter. Once a telegram couldn't be delivered. It had been addressed to the "Keeper of bodies". Although everything was strict, top secret and confidential at that time, Headquarters was a peaceful place to work.

Farewell

In January 1959 our employment contract was terminated. A fare-well-party took place with our last Commanding Officer, Major Mitchell – in 1967 called "Mad Mitchell" because he had gained fame in Aden with his bag-pipe-playing troop and so prevented a war. Major Mitchell was our last personal contact on this last day in Signal Centre.

Pioneers of Communication

All this belongs to the past now. "50 Years" Reunion" – A new century and a new era have begun! Handies, computers,



Typical Telegram

faxes and internet have put an end to the era of teleprinters, but we, the operators, can happily say, that we were the pioneers of communication in Headquarters Rheindahlen.

More next month...

Dalmatiner Stuben



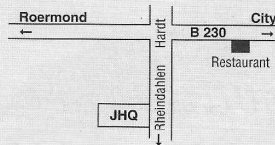
English customers very welcome

Balkan-Restaurant

OUR SPECIALITY STEAKS AND BALKAN FOOD

English menu-cards
Reasonable prices
Children's menu
Take away service
Payment by cheque possible
Party-room for 20-40 persons
14% saved through our party delivery service

OPEN DAILY
from 12 to 14.30 hrs
and 18 to 23.30 hrs.



41169 Mönchengladbach-Hardt
Vorsterstraße 321 - Tel. 02161/559344

RH1013



Tüschchenbroicher Mühle

"The good restaurant near you"



Every Sunday Gourmet Buffet
from 11.30 - 14.00 hrs.

(An excellent idea for an unusual invitation or gift voucher)

€ 19,95

41844 Wegberg - Tel. 02434 42 80

See us on the internet: www.tueschenbroicher-muehle.de

Closed Mondays

RH1464b

RH1232b

Restaurant CHINA GARTEN

中華園 Inh. Lai

☎ 0 24 34 - 10 69

Delivery

Our delivery service is now available
SEVEN DAYS A WEEK
Delivery to JHQ and outlying quarters.
Just ring **02434 1069**
between 17.30 and 23.30 Hours.
There is **No Delivery Charge**
for meals of € 15 or over.

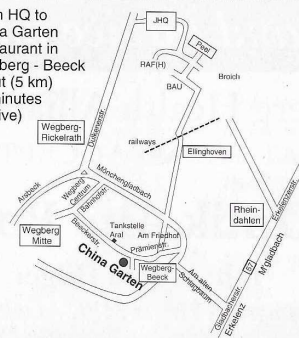
FREE TRANSPORT SERVICE

For 4 to 16 persons.
Larger parties welcome for this service but
one day prior notification is appreciated.

*Friendly service, english speaking
Excellent food guaranteed.*

*If the service is not up to our high standard
or delivered food is cold, ring the boss Mr Lai.*

(from HQ to
China Garten
Restaurant in
Wegberg - Beeck
about (5 km)
10 minutes
to drive)



NEW!

"EAT TILL YOU DROP"
self serving buffet
including starters and desserts

Sun midday 12.00 - 14.00 hrs
Fri/Sat/Sun evenings 18.00 - 22.00 hrs

Over 15 main courses to choose from
only € 11,30

Children under 12 years **only € 6,-**

Wed midday special 12.00 - 14.00 hrs
only € 6,50

Wed evenings 19.00 - 22.00 hrs
only € 11,30

Children under 12 years **only € 6,-**

*We accept Abwicklungsscheine!
Advance bookings recommended*

**Im Wiesengrund 2
41844 Wegberg - Beeck**

ALSO AVAILABLE

Buffet - Lunchtime or Evening - for 20 or more people if booked in advance.

★ STING ★
★ OCCHIALI ★

Calvin Klein
eyewear

**EXCLUSIVE
COLLECTIONS
OF GLASSES**

*constantly available
to special prices minus VAT*



Optik „Alte Post“

*For all your Eye Care needs - eye tests, glasses,
contact lenses and advice on sight problems.*

We visit the Wegberg Health Alliance Complex weekly.

VAT FORMS ACCEPTED

Optik Alte Post

Inh. Karola Hilger

formerly Maternus Hilger MBE / Optometrist RAF

Bahnhofstr. 29 (across from Kreissparkasse)

41844 Wegberg

Tel. 02434 - 25666

Opening Times:

Tuesday - Friday
09.00 - 13.00 and
14.00 - 18.30

Saturday
09.00 - 13.00

Monday closed

Urgent appointments
always available.



RH/0009

WHY JHQ RHEINDAHLEN?

Its Origins

After the unconditional surrender of Nazi Germany in May 1945, the main task of the allied forces was to organize the zones of occupation which had been laid down in the Yalta Conference. **The British set up their Headquarters roughly in the centre of their zone in the Westphalian Spa towns of Bad Oeynhausen for the Army and Bad Eilsen for the Royal Air Force.** Fences were thrown up around these towns and the occupants evicted except for those who were needed to provide the services in the Headquarters. **The British Naval Headquarters was in Minden!**

In the early 1950s, the development of the Cold War necessitated the establishment of a peacetime Headquarters for the British Occupation Forces which was west of the Rhine and which fitted into the NATO scheme for the defence of Western Europe. This concept was of course also prompted by financial considerations. The forthcoming ratification of the Bonn Convention would restore full sovereignty to the new Federal Republic of West Germany which would mean that the full cost of occupied requisitioned properties would fall on the British taxpayer instead of on the German Occupation Budget. It was therefore essential to get out of all requisitioned buildings and to build a new headquarters complex as quickly as possible so that we didn't have to pay for it!



Choosing the site

Criteria

The criteria used in the selection of the site of this new Headquarters were of a non-military nature. The Rheindahlener Wald was eventually chosen (which is the reason why despite there being a town called Rheindahlen not far away the inhabitants also refer to the JHQ as Rheindahlen). This site was within easy reach of the electricity grid, gas and an established water supply and since the land was owned solely by a local textile magnate acquisition was easy.

Early History - Roman

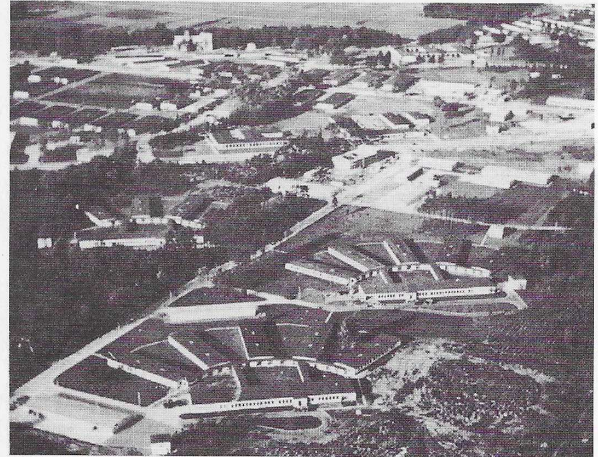
As with so many military camps and settlements, the Romans had been here before us. A Roman causeway borders the area on the south and at the western exit the remains of a Roman castle were found. The officers' messes were built in the area of a burial ground (dating from the second and third centuries AD) and the inhabitants of Londonderry Drive live over a Roman villa. British soldiers were billeted here as early as 1703 when the Duke of Marlborough led his troops on the famous march to the Danube which ended in victory at Blenheim.

Some of the artifacts found, together with maps showing the locations of the Roman remains, were exhibited in the Army

Education Centre, Cambridge House, which is named after the first Earl of Cambridge. King Edward III gave this title to his brother-in-law Marquess William of Juliers when he visited Cologne in 1340. It was this same local nobleman who raised the status of the village of Rheindahlen to a town.

JHQ had to be built within 2 years

The main consideration was that completion of the project had to be within two years. Even so it was not permitted to ignore barrack synopsis scales, as far as possible standard barrack



construction had to be used with existing drawings and contracts making up the bulk of the building. This is the reason why so much of the architecture is in single storey flat roof blocks. New planning of buildings and services had to be done on the spot. Among the German contractors who placed tenders for the work was one who offered to supply a 'maison' for the troops. He had to be persuaded that these facilities were not included in barrack synopses!!

House Design

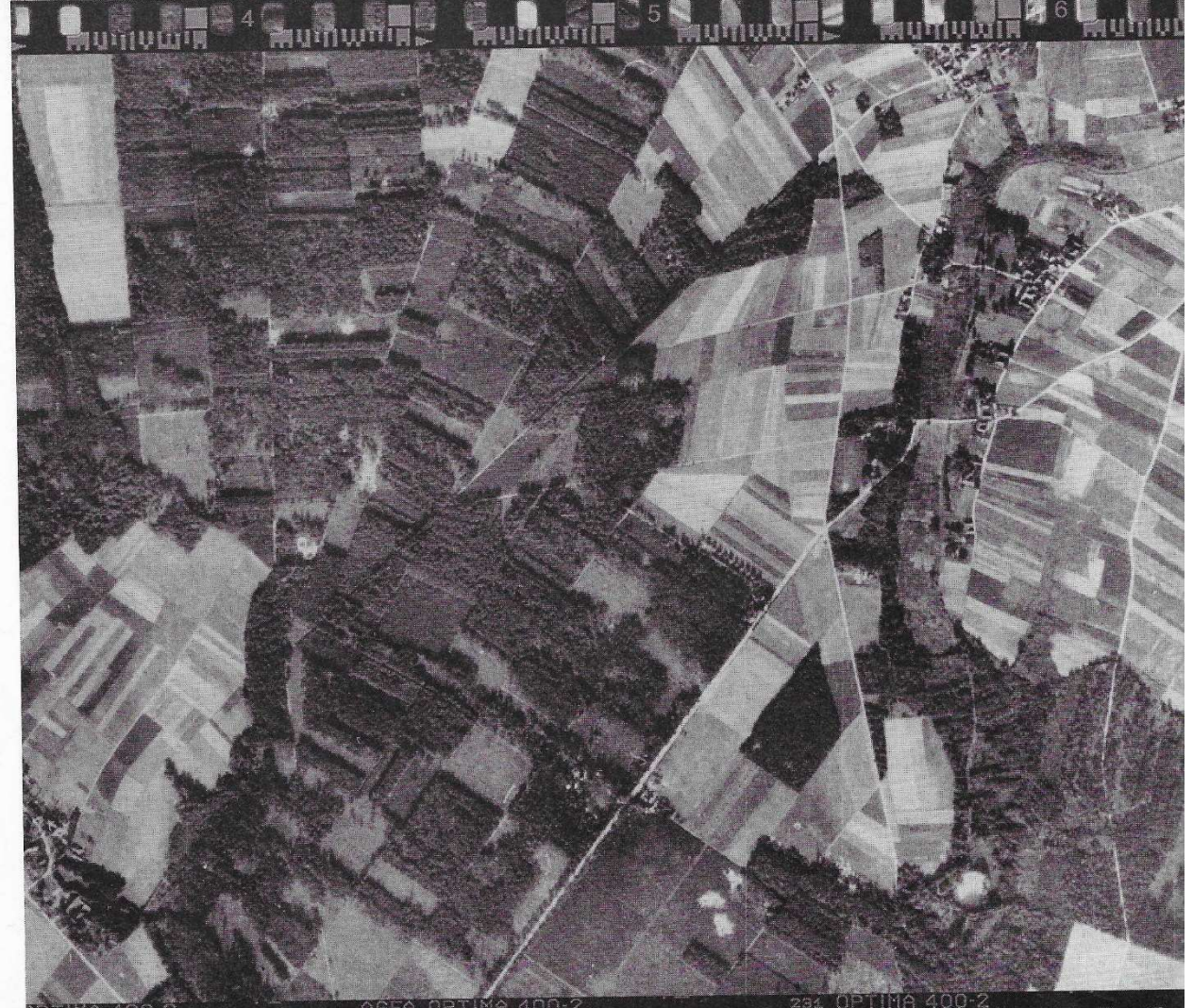
Traditional differences in house design caused many disagreements between the German Ministry of Reconstruction and their British counterparts and this led to much heated discussion. German tradition demands a cellar but it is not provided for in barrack synopses. The War Office eventually conceded to half a cellar for every house. The German architects regarded as extremely old fashioned the demand for a traditional English fireplace in officers' quarters in addition to modern central heating. Colonel Grattan also insisted on English sanitary practice ie. the 'wash-down' type of toilet instead of the European 'hospital pan' type. Unfortunately it is also European practice to flush toilets by a push-button method direct from the mains. This combination does not work resulting in the long delayed effect we all know!

Private garages were considered by the War Office at that time as an amenity and a concession of garages for 50% of the houses was granted. This was totally inadequate. The small garden shed came on the insistence of the ladies' committee!

(continued on page 24)

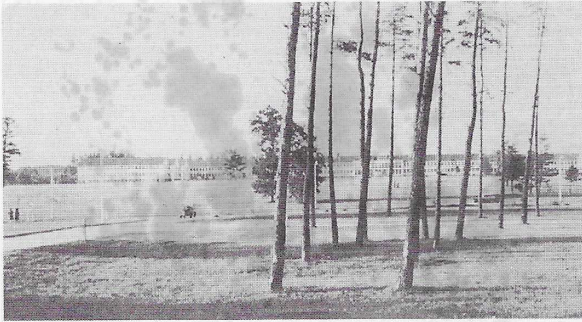
MIDDLE PAGES Caption:

"Let the pictures tell the story".
The move from Bad Oeynhausen to JHQ.
Compiled by Rob Pollard, Media Ops BFG





(continued from page 21)



HQ

HQ building

The headquarters building was built on the highest part of the site. Because of many changes in plan during the course of the construction, apart from the structural shell of the building, which is of a hollow concrete block construction, most internal partitions were designed to be factory-made interlocking wall plates of heraklith and gypsum not bound onto the floors and walls. These can be easily removed or can have doors sawn into them. They also save many square metres of map boarding since they can hold drawing pins but, for those who work in the building sound proofing can be a problem.

The other remarkable feat was the fact that the camp has its own water supply. This was due to Colonel Grattan's skill in water divining which he had learnt while serving in India before the Second World War. The German geological experts did not believe his claims but Colonel Grattan was strongly backed by his superiors and was allowed to go ahead with explorations for water.

Spirited efforts

Work started on the first quarters in early November 1952 because of the difficulty in finding accommodation in devastated Moenchengladbach. During completion of the construction and the move into the new headquarters some buildings in Moenchengladbach were requisitioned. Many owners were quite elderly and made spirited attempts to re-occupy their houses. Most attempts were treated with good humoured tolerance. Two old people advancing on such a property in their invalid carriages collided with each other and had to be res-



The scale model



Colonel Grattan at the entrance to the JHQ site

cued from a ditch by the military police. However, an elderly lady did once manage to drop by parachute from a light aircraft onto the roof of the then Garrison Officers' mess. Her attempts to gain access through a sky light were heard in time and she was driven off with fire extinguishers!

On Rheindahlen camp itself there were only two German occupied houses. Haus Helbach was lived in by the owner of the Rheindahlener Wald and he appears to have accepted the situation philosophically. Haus Heinen on the other hand was evacuated by a forester and overnight doors, windows and floors disappeared leaving only the walls.

Completion

Despite the coldest winter for 50 years, during which the workforce of 7,000 went down to 56, followed by a wet summer during which three inches of rain fell in one evening causing severe damage, the camp was ready for occupation in October 1954, only three months later than originally planned. The determination and endurance of the German labour force was an important reason why the project was completed so rapidly despite the weather conditions likened by the German workers to the Russian battle front.

Probably not since Roman times has one military engineer been asked to build a complete town from nothing and it was all achieved in little more than two years.

Researched from "New Headquarters in Germany" by Colonel H. Grattan and "Ten British Military Towns" Ed. By Peter Dietz.

PLEASE NOTE

OUR NEXT MAGAZINE IS
A JOINT AUGUST/SEPTEMBER ONE.

THIS WILL BE PRINTED ON OUR PRINTERS RETURN
FROM HOLIDAY AND SHOULD REACH YOUR QUARTER
BEFORE THE END OF AUGUST.

Anything you want - You can get at



**Aladdin's
Cave**

Rheinbahnstr. JHQ

EVERYBODY MOST WELCOME TO COME IN
Please ask, if you can't find what you are looking for.
We'll be pleased to help you

We accept order forms for Tax Free sales

Original Nutcracker and Smoking Men Cuckoo Clocks Beersteins

Picture frames, toys, souvenirs & gifts
Pet products - Hardware
Bath Accessoires
DIY - Do it yourself - supplies

Net-Curtains Rails-Hooks

Key Cut

Fancy Dress Items

throughout the year

ONLY at 1st Shop opp. JHQ NAAFI

Dry Cleaning Service & Tailorress Service for simple Repairs

Tel.: 02161-559601

McMüller's
irish american pub



**BEST BURGER SELECTION
IN THE RHINELAND!**

100% American owned and operated
English, German French and Dutch spoken
Bed & Breakfast with full Irish Breakfast

Friday, July 9th - Louis Fitzmahony
from Dublin Irish folk with guitar, tin whistle, banjo and more. Cover charge - 5 Euros

Saturday, August 7th - Inchequin from Belfast
genuine Irish Session with fantastic band!
Cover charge - 8 Euros

New function room seating up to 120 people!

We offer complete carvery buffets including
"all-you-can-drink" beer and wine from Euros 35,- pp
Now booking for Christmas 2004!

Hours: Daily from 19:00-23:00, Fri & Sat 19:00-01:00
Sun 11:00-23:00, Sunday & Holidays Brunch from 11:00-14:00
Closed Mondays

Innkeepers: Walter and Jennifer „McMüller“
Neusser Str. 54, 52441 Linnich-Kofferen
Tel: 02462-4457 Fax 02462-4593
e-mail: Waltmueller@t-online.de / www.mcmuellers.com

Directions: Follow Highway 57 from JHQ past Erkelenz, through Baal and past Rurich. Turn left in Korrenzig to Glimbach, then turn left and continue to Kofferen. We're on the right hand side in the third house from the end of the village.

CHINA RESTAURANT
香港酒樓

HONG KONG

☆ **FREE DELIVERY SERVICE**
from € 15,- onwards available
SEVEN DAYS A WEEK to JHQ, WILDENRATH, JAVELIN BKS and outlying quarters. Just ring 02434-1277 between 17.30 and 23.00 hours.

☆ **LUNCHES**
For those Middy Farewell and Celebration Lunches. Ring us beforehand for a FAST SERVICE.

☆ **BUFFET SERVICE**
at our restaurant for your party of 18 or more. Price per head negotiable.

☆ **PARTY SERVICE**
for 10 or more at your home or club. Choose from 3 different menu options. A waiter from our restaurant is also available to serve you. Please ring the manager to arrange your requirements for either service or any other **SPECIAL REQUEST**.

☆ **FREE TRANSPORT FROM JHQ, JAVELIN BKS AND ALL OUTLYING QUARTERS**
from 5 persons or more, just phone to arrange details.

- * Good food at reasonable prices
- * Newly extended restaurant and party rooms
- * Air-conditioning throughout
- * Party bookings for up to 200 welcome at all times
- * New specialities on menu - over 130 dishes to choose from
- * Midday menu from € 5,90

Telephoned orders are welcome • Take-away food available • Large car park

Opening times: Mon - Thur 12.00 - 15.00 and 17.30 - 23.00 hrs
Fri - Sat 12.00 - 15.00 and 17.30 - 23.30 hrs, Sun 12.00 - 23.30 hrs.

Dülkener Strasse 73 - 41844 Wegberg-Rickelrath Telephone 02434 / 1277

LB Leo Brzovskis Computers

Our services include:

- Complete systems, personalised, without surcharge
- Detailed consultation, particularly for people upgrading
- Quality accessories and inexpensive installation
- Repair, upgrades and service guaranteed

Opening times:

Monday, Tuesday, Thursday and Friday

11.00 to 19.00

Wednesday

and

Saturday

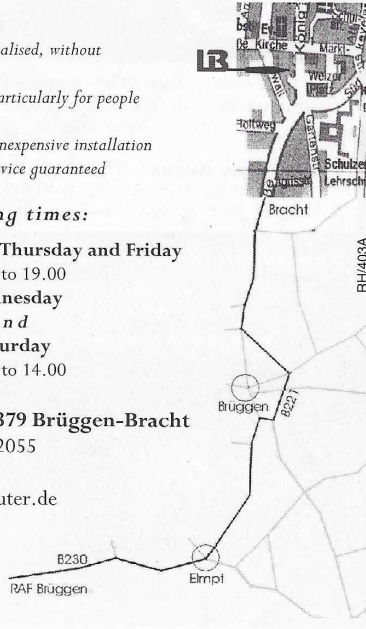
10.00 to 14.00

Königstrasse 10, 41379 Brüggen-Bracht

Telephone: 02157-872055

Fax: 02157-871801

Email: info@lb-computer.de



THE INDIA PALACE TANDOORI RESTAURANT



in Mönchengladbach - Alter Markt

• Main chef from London

- Real Indian food, over 142 delicious authentic dishes to choose from, all including Pilau rice
- Original Tandoori dishes
- Take away service available
- Telephone orders welcome
- Party bookings welcome
- New fish dishes

Oldest Indian & Tandoori Restaurant in Mönchengladbach

Indian Buffet € 12,50

Every Friday, Saturday 18.00 - 22.00 hrs
and Sunday 12.00 - 22.00 hrs

Eat as much as you like, drinks extra.

Children up to 10 years: 50%

Opening Times: 17.00 - 23.30 Mon - Sat, 12.00 - 23.00 Sundays

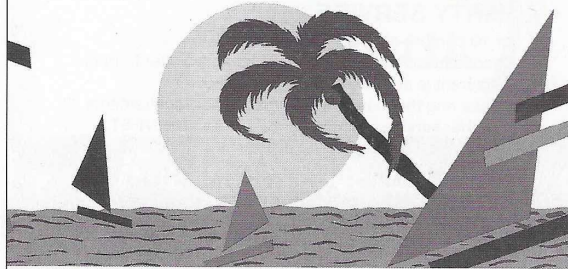
Kapuzinerstr. 6, 41061 Mönchengladbach

Telephone 02161 - 20 64 05

Near Sinn Leffers. Parking Alter Markt or in Beergarden.

RH/146

Sunline Sonnenstudia



RH/433

Opening Hours:

Monday to Saturday
0900 - 2100

Sundays and Bankholidays
1000 - 1600

Niederkrüchten-Elmpt

Lindenweg 1

(Ecke Goethestr./Poststr.)

Tel. 02163 - 8586



- No appointments or memberships required
- Sun Lamps are also available
- Our staff can advise you as to the most suitable programme for your skin

We look forward to seeing you!

SUNSHINE in Niederkrüchten Elmpt...

- The latest Top of the range solariums
 - Air conditioned cabins
 - A friendly atmosphere
- ...and reasonable opening hours...

Cinema

THE GLOBE CINEMA-JHQ

JULY

4 MAT	Harry Potter & The Prisoner of Azkaban	PG
6, 8	Harry Potter & The Prisoner of Azkaban	PG
9, 10	Shaun of the Dead	15
10 MAT	Peter Pan	PG
11 MAT	S O R R Y C L O S E D	
11, 16, 17	Troy	15
13, 15	Kill Bill: Vol 2	18
17 MAT	S O R R Y C L O S E D	
18 MAT	S O R R Y C L O S E D	
18, 20, 23, 24	The Day After Tomorrow	12A
22	The Girl Next Door	15
24	The Cat in the Hat	24
25 MAT	S O R R Y C L O S E D	
25, 27, 29	Eternal Sunshine of the Spotless Mind	15
30, 31	Van Helsing	12A
31 MAT	S O R R Y C L O S E D	

Not receiving your Bulletin regularly?

Ring JHQ 3284 and let us know!

Careers

EXAM RESULTS SERVICE 2004

AS/A2 level results will be published on Thursday 19th August.
GCSE results will be published on Thursday 26th August.

Inevitably, some young people's results will bring uncertainty, whether they have done better or worse than expected. The Careers Centre in Windsor School will be open during this period to provide help and advice.

GCSE Results

For those students who are concerned about GCSE results and Further Education, training or employment options, Careers Centre staff will be able to give you advice and information.

Liz Donnelly

Rheindahlen Careers Centre
Windsor School
JHQ MIL 2585/2832
CIVIL 02161 472 2585/2838
FAX 02161 556768

July Events

JULY EVENTS

1st - 34 AEC/43 AEC
Enrol for Autumn
Term Courses see p. 33

9th - ARRC Welfare
Centre - Victim
Support
Information Morning
10a.m onwards

6th - 28th - VTS
various courses
see p. 34

18th - JHQ Fire Station
- Open Day

30th - Borussia
Tournament see p. 43

WHAT'S ON IN JULY

4th July throughout Niederrhein

Cycling Day. Many groups take to the cycle routes around Niederrhein.

5th July Monchengladbach

Thomaner Boys' Choir from Leipzig; Tickets 0180 3 30 33 30

9th July RSU Bus Trip

Cochern on the Moselle
09.00 - 17.00hrs Book at the RSU Welfare Centre

11th July Gelsenkirchen

Soul Divas in Concert (sponsored by Tchibo)
Whitney Houston, Natalie Cole and Dionne Warwick
Tickets 01805 568100 € 39 - € 79 www.tchibo.de

15th - 24th July Monschau

Classical Music Festival including Night of Tenors, La Traviata and The Magic Flute, www.monschau-klassik.de

17th - 25th July Dusseldorf

The biggest funfair on the Rhein, Oberkassel Rhein Meadows

23rd July Dusseldorf

Firework display from the funfair on the Rhein
Oberkassel Rhein Meadows

21st July - 1st Aug Dortmund

YAMATO The Drummers of Japan - Dortmund Konzerthaus

Puzzle Competition

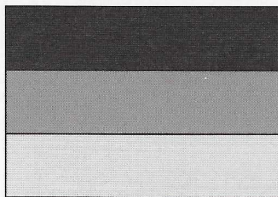
Solution for the June Tennis Torment Puzzle

Male partner	Female partner	Final position
Fred Collins	Sue Kim	1st
Tom Kim	Ann Collins	2nd
Peter Black	Mary Black	3rd
James Rowe	Joan Rowe	4th

Winner of the June Puzzle page is:

Cpl Richardson, QM Dept, RSU, JHQ

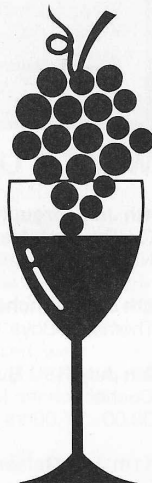
ENGLAND VERSUS GERMANY BUT THIS TIME IT'S WINE!



Whilst you are posted to Rheindahlen Garrison you should as part of the German experience drink some local wines. German wines used to be the biggest selling wine in the UK but in recent times have fallen out of favour. Now the fight back has begun, with the talented

wine makers from all the German regions producing predominantly white wines that are drier and more to the taste of new generations of wine drinkers.

In wine making terms the climate in Germany is cool and therefore the grapes take a long time to ripen and thus wine is labelled as to the ripeness of the grapes that are used to make the wine. Because of the slow ripening process, the grapes develop an intense aroma and palette.



GERMAN WINE TERMS

Trocken – dry wine

Halbtrocken – literally meaning half dry these wines are medium.

Lieblich – sweet

These terms do not always appear on the label, but in keeping with a modern approach more and more labels are beginning to. Beware German wine labelled Trocken is not as dry as the Brits are used to.

Levels of quality

As with all European countries the production of wine is split into two classifications, table wine and quality wine. As wine is such good value here, I would not waste time at the Table wine level.

1 QbA – put simply this means wine from a quality area. This wine has been produced from specific grape varieties from a specified region. The name of the region will also appear on the label.

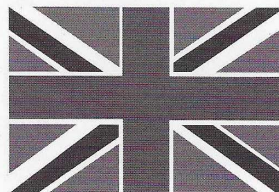
2 QmP – wine with special attributes of quality, or superior wine. In addition to the rules for QbA, the grapes must come from a single Bereich or district. Within the QmP classification there are 6 levels based on the level of natural sugar in the grape.

- **Kabinett** – these grapes are riper than for QbA wines.
- **Spatlese** – meaning late harvest. The lateness produces not only more natural sugar but more importantly a concentration of flavour.
- **Auslese** – harvested from selected extra ripe grapes that further concentrate the flavours.
- **Beerenauslese** – Beeren, meaning berries indicates that these wines are made from individually selected berries. These wines tend to be very sweet and if all that sugar was allowed to convert to alcohol these wines could reach 18% abv.
- **Trockenbeerenauslese** – as previously mentioned trocken means dry, but in this classification of wine, the dry refers to the state of the grapes when picked. The grapes are picked when

almost raisin-like and these wines are only made in exceptional years. These wines have high acidity balanced with high levels of sweetness.

• **Eiswein** – literally meaning 'Ice wine'. Made from grapes affected by noble rot and the grapes are frozen when picked in mid winter. The resulting wine is intensely sweet, but balanced with high acidity. The perfect dessert wine.

ENGLISH WINES



The United Kingdom has had a huge increase in vine growing and wine production over the last two decades. Because the industry is almost starting from scratch it has benefited from all the advances in winemaking techniques that have been developed in the new World.

Kent, Surrey and Sussex are the heartland of English wine production and the quality of wines now produced are superb. As the climate warms, more and more of southern England will be devoted to the growing of grapes and the quality will improve and improve.

The majority of the wine is white, and is produced from grape varieties that originated in Germany as these do well in the English climate. Red wine from Pinot Noir grapes is beginning to really impress the critics, but the real winner is sparkling wine. Examples of fine English wines from the **Curious Grape** range and **Chapel Down** are available at the Reaction Forces Officers Mess and the Civilian Mess.

I hope that these terms will give you some tips in reading the labels of **German** wines, but the best way to discover the great wines of Germany is to try them. Get out of JHQ and Elmpt and get on Autobahn 61 head south and get amongst the vineyards and try wines in the villages and surrounds where they are grown.

Why not try the **English** wines too and see what you've been missing.

But most of all enjoy

Simon Blyth
VIP Manager – Germany

TEAM SSAFA

Supporting SSAFA Forces help through fitness

TREK NEPAL 2005 - 19th February - 4th March 2005*

Join ex-SAS and best selling novelist Chris Ryan in a trek in Nepal 2005 and raise much needed funds for SSAFA Forces Help.

All you need to do is find a deposit of £295 and raise a minimum amount of sponsorship. For further information please register your interest at www.ssafa.org.uk/Trek.asp or contact Joanna Le Vannais on 020 7463 9222 or email Joanna.lev@ssafa.org.uk

*Dates may be subject to change

SSAFA FORCES
Help



Desire 100% luxury.

McArthur
Glen
Designer Outlet

Roermond / NL

Paradise of price.

- **Over 120 world brands**
- **Also on Sundays**
- **30 minutes from Düsseldorf**
- **Discount book amounting to at least EUR 160,- for free on presentation of your ID-card**

New: Polo Ralph Lauren Factory Store · Strenesse · Burlington

Mandarina Duck · SuitSupply · Nitya · s.Oliver · Helly Hansen · adidas · Nike · Levi's · The North Face · Fjällräven · The Body Shop · Bodum · Rosenthal · Möve · and many more in the exclusive centre

* in comparison with the manufacturer's recommended retail price

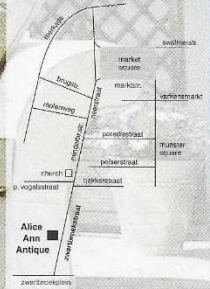
www.paradiseofprice.de

Alice Anne Antique

Specialising in old pine, oak and teak furniture



Bendic International b.v.
"Where professionals decide"
 leather furniture



Alice
Anne
Antique



Zwartbroekstraat 16 Roermond
 Tel. 0031 475 332629

Opening times:
 Mon 13.00 - 18.00
 Tue-Fri 10.00 - 18.00
 Sat 10.00 - 18.00
 Thursday late night shopping till 21.00



Dutch Army Shop

Tel. 02161 - 565 55 87
 Fax 02161 - 55 91 86

Band Walk 11
 JHQ Rheindahlen

Opening times:
 Monday - Thursday 09.30 - 17.00 hrs
 Friday 09.30 - 14.00 hrs



Get a **FREE Cacharel** luxury shopping bag with the purchase of: One Cacharel Eau de Toilette + any other Cacharel product.

Philishave HQ 6894

Now: **EUR 99,-**

Buy a Philishave HQ 6894, and get an



original Leatherman knife **FOR FREE.**



SUMMER SALE !

Discounts up to 50% on Adidas, Nike, Helly Hansen, Nomad and Kipling.



NOTE:

Visitors to the Dutch Army Shop must be in the possession of either a valid ID in combination with proof of posting to Germany or a valid Travel Order. Access will be denied in the absence of the aforementioned documentation.

**All Services
 Tax Free Shop**

**We accept
 Special Orders**

RE/473

D-DAY IN JHQ

The Rheindahlen Explorer Scout Unit is the latest addition to Scouting in JHQ. The section is for 14 to 18 year olds of either sex.

Scouts are a self-supporting registered (in UK) charity, and occasionally need to do some fund raising.

The Rheindahlen Explorer Scouts decided to do a war games event as all of its members were already keen war gamers, and members of the local club. They decided to base it on the D-Day landings, as a tribute to those who fell, and to mark the 60th Anniversary of the event.



The modern history of war-games can be traced to 1811, when the Prussian military adopted a game called Kriegsspiel--literally translated as "the war-game"--for use in practicing battlefield command decisions. Kriegsspiel used wooden playing pieces to indicate the different types of units, while the rules covered movements and the effects of terrain, and combat was resolved using an odds table.

Nowadays, War games is not just played by Generals, but has evolved into a game played by anyone who wishes to recreate past battles, and reflect on our history. There are now hundreds of periods and scales to choose from; from the Stone Age to the future, and figures are mainly metal or plastic. As time goes on figures are becoming more and more detailed, as well as affordable.

Joanna Dunlop

RSU Welfare Centre

FORTHCOMING EVENTS

Open Air Museum, Arnhem – Friday 6 August 2004

The Open Air Museum occupies a park with more than 80 characteristic Dutch buildings from all over the country. The museum offers a unique view of daily life and work in the Netherlands over the past 250 years. Experience the life sights and sounds of Holland as it used to be lived in bygone days.

Cost €22.00 for adults
€18.50 for children
€5.00 for under 4s

Aachen Craft Fair Sat 4th Sept

Aachen located about 1 hour from JHQ is at the meeting point of three countries: Germany - Belgium and the Netherlands. A large craft fair is held on an annual basis attracting people from far and wide. Come along with us and sample the wares on sale at the craft fair or just enjoy sightseeing around historic Aachen.

Cost €12.00 per person

Contact the RSU Welfare Centre on 4268 for further details.



CHILDBIRTH IN THE YWCA CAFE!

Not exactly childbirth but, the ladies of the JHQ National Childbirth Trust were out in force at the JHQ YWCA to raise awareness of their group and what they can do for mothers of any age and at any stage of their pregnancy.

Lucy Mackenzie "We are very much an organisation that relies on donations, from which we fund breast feeding counsellors, birth counsellors, and offer help to anyone who approaches us". The YWCA café had been turned into a crèche for the morning as the Little Rascals had closed and decamped to the café to help out and show their support. Coffee and cake kept the many little hands extremely dirty as they attempted to wear the cake rather than eat it!

All the money raised will be put back into the National Childbirth Trust and the Little Rascals, and will also be out into programs that Lucy was keen to emphasise. "We are looking to develop our services further," she said, "We would like to be able to get out to see new mums in hospital, to be able to offer help and advice".

If you would like to take part in the programmes being run, the group meet every Monday morning from 10 to 12 in the ARRC Welfare Centre, and anyone is welcome. "We would love to see pregnant mums, dads, guardians, childminders, basically anyone who has anything to do with very young children" Lucy added. Each Monday morning there are different activities, from music, story time for the kids, outings and nature walks to visits from the Mid wives and Health visitors.

If you would like to know more get along to the ARRC Welfare centre on Monday morning or contact the centre on JHQ Mil 5754.

Paul Baldwin

VICTIM SUPPORT

Helping people cope with crime

Victim Support will be holding an information morning at the ARRC Welfare Centre on Friday 9th July 10a.m onwards.

IF YOU HAVE BEEN AFFECTED BY A CRIME, EITHER DIRECTLY, OR BY WITNESSING SOMEONE GOING THROUGH THE AFFECTS OF CRIME, THEN CALL VICTIM SUPPORT NOW ON: 02161 472 2272

China Restaurant
China-Town
中國城酒樓

RH/311A

- * Sun and holiday **lunchtime** buffet
12.00 - 14.00 hrs € **9,80** p.p.
- * Wed, Fri, Sat, Sun and holiday
evening buffet 18.00 - 22.00 hrs € **9,80** p.p.
- * Children 3 to 12 years old € **6,00** p.p.
Under 3 years FREE

SPECIAL
Wednesday
lunch buffet
€ 6,50 p.p.

New Service:
FREE
TRANSPORT



NEW
Choose from:
Free delivery to JHQ
and outlying quarters

We provide a
quick service
Your Celebration
or Leaving Lunch.
Just Ring us!

Opening times
Monday - Saturday
12.00 - 15.00
17.30 - 23.30
Sundays and Holidays
12.00 - 23.30

Hehler 132
(next to Bleichermühle)
41366 Schwalmatal
Tel: 02163 - 49 724

Out of JHQ main gate
turn left, at junction turn
left again, drive through
Hards for 3 min. We are
on the left, by the mill.



Credit Cards
+
VAT-forms
accepted

Parking at
Bleichermühle
car park

Pizzeria Italia
Pizza Pasta Salads

RH/469



José Antonio Iniesta

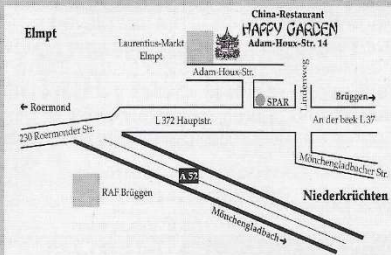
Hauptstraße 82 - 41372 Niederkrüchten

For telephone order call:
02163 - 8 17 15

Opening hours:
Tuesday, Thursday, Friday, Sunday
12.00 - 15.00 and 17.00 - 23.00 hrs
Wednesday, Saturday
17.00 - 23.00 hrs
Mondays CLOSED

快樂園 China-Restaurant
HAPPY GARDEN
快樂園

Adam-Houx-Str. 14
41372 Niederkrüchten-Elmpt (next to "Spar")
☎ 02163 - 57 77 81



Thursday special
(except on holidays):

Lunch: 12.00 - 14.00 hrs only € 6,50
Dinner: 19.00 - 22.00 hrs only € 11,50
Children under 12 only € 6,00

We offer our buffet to groups over 20 persons
on whatever day as wished.
(One day prior notification is appreciated)

NEW!
EAT TILL YOU DROP
Self serving buffet

Sunday Lunch: 12.00 - 14.00 hrs
Friday, Saturday, Sunday Dinner: 18.00 - 22.00 hrs
including starters and desserts and over 15 different dishes
only € 11,50 per person
Children under 12 only € 6,00 per person

Opening times:
Daily from 12.00 - 15.00 hrs
and 17.30 - 23.30 hrs
Sundays and holidays
12.00 - 23.30 hrs
Free delivery over € 15,-

RH/481b

34 AEC courses for the Autumn Term 2004 (JHQ)

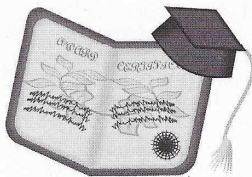
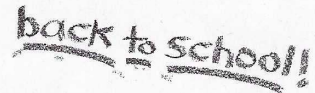
The following Daytime and Evening Courses are available from September 2004.
Enrol from 1 Jul - 3 Sep 04
DON'T MISS OUT



GCSE English (Mon evenings)	GCSE Maths (Wed evenings)	GCSE German (Thu evenings)
GCSE IT (Wed evenings)	Business Studies (Mon evenings)	OCR Level 1 Book keeping (2 wk course daytime) NEW
JEB General Principles and Practices of Teaching (Tue evenings)	A Level English (Mon evenings)	Various Health and safety courses
Intermediate Food Hygiene (26 - 29 Oct)	Basic Food and Hygiene (25 Oct)	Clait Plus (Thu evenings)
Various daytime courses available	Clait New (Tue evenings)	OCR Word and Text Processing NEW
Various IT Workshops	OCR Medical and Legal Text and Word processing NEW	Aromatherapy (Monday evenings)
Soft Furnishings (Tue evenings)	Personal Hair and Beauty Techniques (Tue evenings) NEW	Picture Framing (Wed evenings) NEW
French Modern Jive (basic/semi intermediate - Wed evenings)	Fitness classes (Mon & Fri lunchtimes & Tue evenings)	Line Dancing (Mon evenings)
Basic Wine Tasting and Appreciation (Mon evenings)	Elementary Sewing and Fashion Design (Thu evenings) NEW	Yoga 1, 2 and 3
Decorative Textiles - Needlecraft (Mon afternoons) NEW	Teeline Shorthand for beginners (Wed evenings)	An introduction to practical Law (Thu evenings)
French Level 1,2 and 4	German Conversational courses Level 1 - 6	Spanish Level 1



For more details pick up a brochure from 34/43 AEC or contact 34 AEC on JHQ Mil 3303 or 43 AEC on Elmpt Mil 68 2702



43 AEC courses for the Autumn Term 2004 (JHQ)

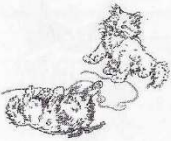
The following Daytime and Evening Courses are available from September 2004.
Enrol from 1 Jul - 3 Sep 04
DON'T MISS OUT

Clait and Clait Plus (daytime courses)	GCSE English (Thu evenings)	Yoga 1 (Tue Lunchtime)
Shape and Tone Pilates (Tue mornings)	German level 1 and 2 (daytime and evenings available)	Dutch for beginners (Tuesday evenings)
OCR Medical and Legal Text and Word Processing NEW	OCR Word and Text processing NEW	Various Health and Safety courses
CV Writing (10 Nov)	Letter Writing (30 Sep)	Everyday Maths (20 Oct)

For more details pick up a brochure from 34/43 AEC or contact 34 AEC on JHQ Mil 3303 or 43 AEC on Elmpt Mil 68 2702

Ogilvie's Cattery

Bernhard Röttgen
Waldweg 6, 41379 Brüggem



Tel. 02163 / 500932
British Owned & Run

RH/462b



VOLVO (U.K.) APPROVED BRITISH MILITARY SALES AGENT
SUPPLYING VOLVO TO THE BRITISH FORCES IN GERMANY

- Full UK RHD Specification
- 3 year Breakdown / Recovery Service
- Part Exchange Assistance
- 3 year UK Warranty
- Competitive Finance
- Full After Sales Service

Collection in Germany, London-England or Sweden

THE FANTASTIC VOLVO RANGE STARTS FROM ONLY £10.675,-!!!

For More Information Ring or Mail Now

Tel. 02161 96 99 9-73

E-mail: bird@bonsels-weitz.de

RH/417b

Volvo (U.K.) British Military Sales - Bonsels+Weitz *Top Quality...*
Krefelder Str. 674, 41066 Mönchengladbach, Germany *Top Safety...*
(Opposite 'Realkauf', next to McDonald's) *Top Price..!*

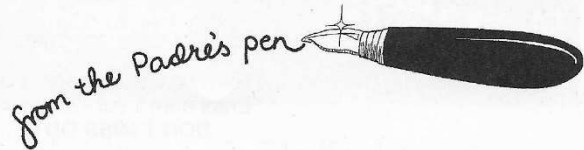
Only 2 mins from JHQ
DEAN'S TATTOOS
AND PIERCING
Skin Design & Henna Tattoos



Dean West
Leloh 40 · 41366 Schwalmtal
Tel.: 02163/3772 · Mob. 0173/2073421

RH/470

Padres Pen



SHAKEN, NOT STIRRED

I have recently arrived in JHQ – possibly like some of you: I hear that the turnover in the summer at ARRC is something like 40%! Thank you for the traditionally warm JHQ greeting which I have received here.

For some, movements can cause great anxiety. St Paul wrote to the Philippians from prison 'Do not be anxious about anything,' It could be good advice to me and my family at this time! But it applies as much to many of us at particular times: some just arriving, some going, some with partners disappearing for lengths of time on Exercise or Operations, some with medical worries. All of these can be traumatic experiences. And there can be many other things which bring anxiety along the way. Sometimes our experience feels a world away from this disciple who testified later to having learnt to be content in every situation.

Life's losses and disturbances can shake us up, particularly the unexpected ones. We may survive them at the time, but be left with an emotional legacy of anxiety. As for St Paul, becoming content is a learning process. In the middle of trauma, our feelings may well be distorting our perceptions. So we need to re-train our thinking to assess our risks on factual evidence not fearful speculation.

Gradually re-claiming the ability to function needs to be taken a step at a time. For some this means breaking down a long-term aim which they find difficult into manageable goals. For instance some find motorway driving a hurdle. Tackling just one junction, staying in the near lane – can be a manageable goal for them which helps gradually restore confidence. And we have to learn afresh that the idea that 'we are in total control of life' is an illusion.

We cannot dictate what the future holds, whether full of causes for anxiety or not. But we can entrust ourselves to our Lord, who alone lovingly holds the future.

Rev Nigel Knights Johnson
Chaplain, ARRC

VTS

COMMITTED TO LIFE LONG LEARNING

Our aim at Vocational Training Services (VTS) is to remain committed to Life Long Learning and also to provide career development for the people in British Forces Germany.



Places are available on our free Professional Training and Development (PTD) Workshops.

Presentation Skills	6-7 July
Effective Relationships	20 July
Interview Skills	27-28 July

For further information contact Vocational Training Services
JHQ Mil (72)4086/2358 or Civ: 02161 4724086/2358.

JHQ RESIDENT RECEIVES HIGHEST SCOUT AWARD

David Haigh, Group Scout Leader of the 1st Rheindahlen Scout Group was awarded the 'Silver Acorn Award' in a ceremony at Wegberg's 50th Anniversary Anglo/German Scout Camp. Each year the Chief Scout honours Scouters who have devoted more than 20 years exemplary service to scouting by awarding them the St George's Day "Silver Acorn" award (St George being the patron saint of scouting.) David is now the only serving member of the BFG Scouting community to hold this award.



Mr Peter Barnes, Chief Commissioner of England for the Scout Association presented the award himself as he considered that David's achievements needed to be recognized at the highest levels. "David has given an immense amount of support to the development of scouting," Peter was keen to point out. "Since the 60's David has been a stalwart in maintaining the continuity of scouting within JHQ and we, the scouting community wanted to say a big thank to him for all his hard work and support over the years". David is an exceptional person who has devoted half his life to the scouting movement. He first joined the scouting fraternity in 1953 at the age of 13 yrs old and left at the age of 17. But on joining the Army in 1960, he re-established his links by helping to run the Sennelager and then Munster scout groups. In 1972

Scouts

he left the Army for a job in JHQ where he has continued his association with the scouts in a range of Group, County and Area appointments. Even being diagnosed with diabetes 5 yrs ago and having undergone a heart bypass 18 months ago has not stopped him sharing his skills and knowledge with others. "I'm rather gob-smacked and rather pleased, but it does show my age a bit," he declared when asked how he felt about receiving the Silver Acorn award. "When the award was announced in March there were tears in my eyes when I rang my wife to tell her."

The ceremony itself was performed at the end of an enjoyable day of activities. The Scout band from Bernkastel-Kues in their ceremonial uniforms (especially worn for David's honour) led the various scout troops onto the parade field where Commissioner Peter Barnes not only presented David with his Silver Acorn medal and bar but also the Bar for Long Service, in recognition of 25 years service to Scouting. The day did not finish there as the 1st Rheindahlen Scout Group had the honour to also perform the investiture of two new members into their group. Nicholas Preece, St Georges School, and George Potter, St Andrews School, both declared their pledges to the Scout Association and received their badges of membership.

Joanna Dunlop

**For ALL your MILITARY INSURANCE MATTERS
consult your LOCAL Insurance Broker**

G. BULL INSURANCE

Registered
since
1972

Your Guiding Angel for Over 30 Years



**Hazard Safety
Jackets for use in
Europe on Sale
for € 8**

Our maxim has always been to satisfy our clients !

**Birkenweg 3 - 41372 Elmpt (behind the ARAL-Garage)
Javelin BKS. (Travel/ Insr. /Car - Centre , 2nd Door Left)
Tel: 02163-5799493 or: 02163-81358**

NEW LOWER PRICING



**VISIT YOUR LOCAL
SHOWROOM OR
CALL FREE ON**

08000 33 22 33

*The complete car buyers package
you can trust*



FEW RIVERS HAVE AS RICH AND VARIED HISTORY AS THE RIVER RHINE (RHEIN)

Its history really gets going when the Romans came to Germany. They liked the Rhine for two main reasons: it was an ideal area for the introduction of wine growing and as a means of transport, for example: the River Rhine passes through four countries: Switzerland, (where it begins)

France, Germany and Holland where it ends. Those fairytale castles that you'll find up and down the Rhine could tell stories of piracy and robber barons in the 11th and early 17th centuries. Then of course there's more modern history which show how strategically important the Rhine was in the Second World War. And guess what? We, in the JHQ area, are living close to all of this. So it seems a good idea to have a closer look at it while we're here.



Last summer, my family's first summer here, was a belter-warm and sunny most Sundays. So we got in the car early in the morning and drove down the Rhine's neighbouring roads and stopped and explored when we felt like it. We liked **Koblenz, Worms, Mainz** (liked that a lot) **Koln** (Cologne) and **Heidelberg** (not actually on the Rhine but close). Best of all were the stops we made at some of the pretty villages along the way. These tended to be on the Rhine itself. Two that particularly caught the imagination were neighbouring villages **Oppenheim** and **Nierstein** – both famous wine making towns. You'll find these two villages just outside **Mainz**.

If you want to buy a few bottles of wine, you can do so as most of the Weingut, (vineyards) sell from their homes with cellars (kellar) attached. Just knock on the door. If there's a language problem – don't worry, if you are there to spend money you'll be understood. Word to the wise, watch your alcohol intake at wine tasting, you've got a bit of drive home and German police are as keen to catch drink-drivers as police are in the UK, even if you are a foreigner.

Late last summer we discovered another way (a ring side seat) to see the Rhein – by **leisure cruiser**.

If you do venture down to the Rhein for whatever reason answer me this why don't you. A German acquaintance of mine tells how as a child living by Rhine he and his chums used to swim (not recommended as currents are very strong) and calculate which barges were from which of the four European Countries. How did they do it? Also, could someone please explain to me how barge owners manage to park their cars (normally a 'hatchback') on the 'poopdeck' of their barges!

It's quite an industry now and there are plenty of different ways to enjoy your cruise. From what I can gather there are two main operating companies **Weisse Flotte** of Dusseldorf. Tel: (0211)326124, (0211)308672 / E-mail:ticketverkauf@weisseflottedkezgeldorf.de / Internet: www.weisseflottedusseldorf.de **KD.Koln-Dusseldorfer** Deutsche Rheinzhiffant AG Tel: 0211 323 9263 / Fax: 0211 210 7685

Incidentally, their brochures are available in the HIVE.

The company organizes family days (I seem to remember they organize children's birthday parties if you fancy something different – ask about that). Also, I think I know where we are having our summer staff 'do'. By the way, they operate until New Year's Eve. We've come along way since the Romans lived here. Haven't we?

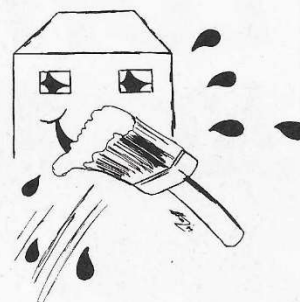
Knapsack

HOUSING NOTES

From the Rheindahlen Station & Welfare Office.

Ayrshire Estate

The Station Commander has given permission for an area adjacent to Lilienthal Strasse to be used as a landing/take off site for a hot air balloon Saturday 10th July 04.



New RMC Estate Manager

SSgt Green has just recently been posted in and will be looking after RMC South Area. He can be contacted on JHQ 2059.

Caravan and Recreational Vehicles (RV's) Parking

The parking of caravans and RV's in housing areas for periods in excess of 48hrs is not permitted. There are three designated caravan parks on the RMC. If you wish to be allocated a parking spot within one of the designated areas contact the Rheindahlen Detention Rooms on JHQ 2082.

General Maintenance of Areas

Residents in houses are required by Stadt by-laws to keep foot-paths (front, side and rear of their married accommodation) free from weeds. Occupants are also responsible for ensuring that the fenced area at the back of their accommodation is kept in a tidy condition. Paths and beds are to be kept free from weeds; lawn is to be mown and hedges trimmed. In cases of neglect charges may be raised on hand-over. **Private cars and caravans are not to be parked on grassed areas.**

Play Parks

Two play parks on the RMC have been refurbished over the past year for the benefit of all young children in the area. **The park equipment is designed for children under the age of 12 yrs.** All occupants are asked to help us to look after this facility. Any-one caught vandalizing play parks will be severely dealt with. Parents may be held financially responsible for the acts of their children.

Garden Pools, Ponds and Water Features

Paddling pools and even buckets can be hazardous, even fatal to young children. If children use your garden please empty rainwater containers regularly or seal them; turn paddling pools upside down after use; don't leave young children unattended.

Dog Registration and Garage Allocations

Dog Registration and garage allocations can be organized by visiting the RSH & WO at Bldg 143 on Queens Avenue weekdays between 0900 – 1300hrs. For further information please contact JHQ 2499.

Vandalism on the Housing Estates – Parental Responsibility

A significant investment has been recently made to improve the RMC facilities including new Playparks. Any person caught in an act of vandalism will be severely dealt with. This is the policy endorsed by the Station Commander. Parents may be held financially responsible for the acts of their children, and in severe cases dependant status can be taken away.

This is no Lonely Hearts Ad!



But we'll match you with the perfect tyre. Unlike the usual matchmaker, we'll provide you with maintenance services, too: balancing, tracking and tuning. all tax free via your mess/PSI/PRI.

Reifen Rex

ein Unternehmen der Busch-Gruppe

41844 Wegberg-Klinkum
Alte Landstraße 293
Telefon 02434-46 34
Telefax 02434-54 43

one, two, three, four, drive...

RH120c

KFZ - MEISTERBETRIEB



KFZ - Meisterbetrieb
KFZ - Sachverständiger
Erich Hamm

All kinds of car repairs.
Body repair and spraying.

Specialist garage for Daihatsu and Peugeot.

- Tyre Service
- Car Tuning
- Car Electrics
- Car Service
- Tracking Service
- Car Accident Damage Assess

Hardterstr. 543
41179 Mönchengladbach
Phone & Fax: 02161-580288
Only 2 mins from JHQ

RH/032

On
JHQ
Monday-Friday 9-6
Saturday 10-3

JHQ Tax Free Car Centre on JHQ

JHQ Head Office: OAKHAM WAY 5, (OPPOSITE THE BP PETROL STATION)

Tel.: 02161 558014 - Fax: 02161 830218 - E-mail: jhqtaxfree@aol.com

Javelin Bks Office: TRAVEL CENTRE, GRANDY ROAD, ELMPT STATION

Tel.: 02163 5768833 - Fax: 02163 5768831 - E-mail: jhqtaxfree@aol.com

On
Javelin
Monday-Friday 9-6
Saturday 10-3



SAAB
Military Sales

THE NEW SAAB CONVERTIBLE

* Guaranteed SWAP on the
9-3 Vector 1.8t Convertible
(*subject to terms, mileage & condition)

EXPERIENCE THE DRIVE OF YOUR LIFE



TOYOTA



LEXUS

THE NEW TOYOTA AVENSIS ONLY £10,795

Including:

Air-Conditioning, ABS, PAS, Electric Front Windows, CD/Tape/Radio,
9 Airbags, Alarm & Immobiliser, Remote Central Locking, and more.



LANDROVER



Introduces the NEW **FREELANDER**

Prices start from only £ 11,744.00
"UK's Best Selling 4 x 4"



Contact Julie Kemp (JHQ) or Peter Thomas (Elmpt), your approved Representatives
Mobile: 0172 525 1671

RH1314c

Rheindahlen HIVE

02161 472 2519
 Mon – Fri 09.30 – 13.30
 throughout July

Wildenrath HIVE 02432 81017

Mon – Thurs 09.00 – 12.00
 Friday – 11.00 – 14.00

Elmpt HIVE - closed until further notice. Enquiries to Rheindahlen HIVE please.

**Pools and Beaches**

Make the best of the good weather and visit the local pools and beaches. HIVE has a handy booklet with directions to all the most popular places in the area. Check with the HIVE for school holiday opening hours for the station pools.

BOAT TRIPS

If you don't want to get in the water then get on it! Various boat trips run along the Rhein from Dusseldorf or Cologne.

Weisse Flotte runs daily trips from Dusseldorf Rheinterrasse to Kaiserswerth and at weekends and on Wednesdays there are trips to the walled town of Zons and Schloss Benrath. There are also periodic themed trips, often including food and entertainment. Info from 0211 326124 www.weissflotteduesseldorf.de or pick up a leaflet from The HIVE.

KD run similar trips from Cologne, with Wednesdays to Zons. Over the summer months there are weekend evening trips with live music, food and drink. They also offer periodic special trips. KD also run trips further down the Rhein and on the Moselle. For more info try www.k-d.com or pick up a leaflet from the HIVE.

For a more **local trip** there are two boats making trips around the Maas at Roermond. Ring the Roermond Tourist Information Office for more info on 0031 475 335847 (they speak good English!)

Pet Passports

The introduction of the new European Pet Passports is still unconfirmed at the time of going to press. Phone your HIVE for the latest information. The requirements for entry to UK will not change so make sure your pet's vaccinations are up to date and the current pet passport from your Stadt Vet will be required until the new European Pet Passport comes in to force.

Information Officers Required.

There are currently vacancies for two Information Officers at Elmpt HIVE. If you are interested in a stimulating and challenging part time job running Elmpt HIVE Information Centre contact RALSU.

Volunteers

We recently celebrated Volunteers Week and HIVE would like to recognise the huge contribution our volunteers make in enabling us to maintain the valued service the HIVE provides. A big thank you is extended to the Rheindahlen team of volunteers:- Astrid Hall, Peter Matthews, Silke Wooller-Turton and Jenny Tod.

"HOT JULY BRINGS THUNDER SHOWERS APRICOTS AND GILLYFLOWERS"

Sara Coleridge (1802 – 1852)

July can be one of the hottest months of the year, especially here in the Rhine Area. However, heavy, and very often sudden, thunderstorms can cause havoc and it is important that all the tall plants that need supporting have been attended to otherwise a heavy downpour, laced with hail, can cause untold damage. Apart from this you should be enjoying the most prolific month in your garden with the season in full swing and many things coming into full bloom.

**Prolong and Protect**

The main emphasis for this month in your gardens is on "prolong" and "protecting". This is so it will retain its full richness for the whole of the summer. We can achieve this using several methods; first is by deadheading all the flowers to prevent the formation of seeds and channel into the production of more blooms, secondly, keep watering, weeding and feeding (there is no escape from this).

Water Well

Flowers in pots and hanging baskets are particularly vulnerable to dry conditions and need watering every day and feeding every week. Try to keep them moist rather than waterlogged and use a good liquid fertilizer which can go in the watering can or, alternatively, you can buy pellets that release the fertilizers over a period of time. Grass cuttings can be used as mulch around bushes and roses but beware, if you have a lot of weeds in your lawn there is a danger you will transfer them to your flower beds using this technique.

Bulbs

Tulip and hyacinth bulbs should be lifted and dried before storing and planting again in the autumn. Daffodil bulbs and bulbous irises can remain in the ground, unless they have become overcrowded, if the ground is required for other purposes.

Enjoy

Finally, the most important thing about gardening in July is to make time to sit or lie (as is your preference) in it and enjoy everything about it (equipped with ice cool drinks).

ARE WE GETTING IT RIGHT?

DO WE MEET YOUR NEEDS?

THIS MONTHLY MAGAZINE IS PUBLISHED FOR YOU ALL

YOU DO HAVE A VOICE!

PLEASE USE IT.

CONTACT THE EDITOR ON JHQ MIL 3284 OR

THE OFFICER I/C - SSO ELMPT - ON ELMPT MIL 3634.

FAHRZEUGTECHNIK www.ft-vest.de
VEST the carfitters

Major Service 69,-€
 Minor Service 34,-€
excl. parts

GOT IT HOT?
AIRCO SERVICE
 we fill your
 airconditioning

CARGLAS Carglas
 ALL !!!! Windscreens
 within 24 hours
 fitting



made in Germany

Tyres

135/??-13	32,- €
185/60-14	42,- €
195/65-15	50,- €

English spoken.
 Ask your SIF Shop
 for taxfree form.

Opening times: Mo. - Fr. 8.00-17.00 h und Sa. 8.30-12.00 h
 Weiherfeld 55 • 41379 Brüggen • Tel.: (0 21 63) 955 940

Voila

FRENCH CAR WORKSHOP
 A. GRZONKA



Your specialists in
 CITROEN servicing
 and repairs and all
 other French, Japanese
 and European Cars.
 RENAULT, PEUGEOT, BMW
 "VW, FORD, VAUXHALL,
 MERCEDES.
 Labour and parts at
 extremely competitive
 prices.

PREPARATION
 FOR BFG ROAD TEST
 QUOTATIONS
 WITH NO OBLIGATION.

OPEN FROM
 08.30 - 17.00 WEEKDAYS AND 09.00 -12.00 SATURDAYS
 AM BAUMLEHRPFAD 9 - TEL. 02161 - 580387
 41179 MÖNCHENGLADBACH - RHEINDAHLEN

AUTO Vennen GmbH

YOUR LOCAL  DEALER

Our Services are:
 Car Service and Warranty / Windscreens /
 Accident repair / Rent a Car /
 Exhaust - Brakes - Tyres and Engine Repair /
 Preparation for BFG including Exhaust
 Emission Test / RHD Ford Cars - Tax Free /
 All repairs more than € 50,- Tax Free by
 paying through your Military Mess

ENGLISH SPOKEN

Vierson-Dülken
 MG-Hardt Vorster Straße X MG-Centre

 FORD VENNEN GmbH
 Vorster Str. 329
 41169 Mönchengladbach-Hardt
 Telephone:
 02161 55475 / 76


 Queens Av.
 JHQ
 MG-Rheindahlen

PIT-STOP



Our Services are:

Maintenance Service:
 • Car wash • Inside cleaning
 • Engine cleaning • Polish

Service/ Oil change / Inspection:
 • Inspection of all cars • Engine check • Brake
 test • Engine test • Preperation for BFG
 • **Accident Repair • Car Rental**

Tyre Service:
 • All brand Tyres and all sizes • Balance
 • Wheel tracking • New wheels

Opening times
 Mo-Fr 6.30 - 20.00 Sa. 6.30 - 18.00
 S. 9.00 - 18.00

Shell Station Wilms & Rudolph GmbH
 Hardter Str. 133, 41179 MG-Rheindahlen
 Telefon: 021 61/58 02 68
 Telefax: 021 61/58 18 10



RED CROSS AIDED BY RHEINDAHLEN COMMUNITY CENTRE

Our picture shows the presentation on behalf of the Rheindahlen Community Centre (RCC) by WO1 (SSM) Rab Proctor MBE and Mr Pat Hegarty to Mrs Karin Depasquale of The St John and Red Cross Defence Medical Welfare Service.

The DVD players and accessories were purchased by the RCC from money raised by the committee and members of the club. The DVD players and accessories will help to improve the facilities available to all patients unfortunate enough to be admitted to hospital.



GIRLGUIDING

4th Rheindahlen Brownies

In May, 4th Rheindahlen Brownies ran a fundraising spring fete / jumble sale at the Guide Hut. Attractions included a jumble sale, a cake stall, a raffle and face painting, all in the name of fundraising. Guiders, parents and Brownies all helped in the running of this day. Some of the money raised will be donated to the Malawi Brownies' Fund, as they do not have enough money to buy their own badges and uniform. The remainder will go into the 4th Rheindahlen Brownie funds, to help pay for crafts and outings etc.

Raffle prizes were kindly donated by; American PX/BX, YWCA, Support Battalion ARRC PRI, Dutch Army Shop and RMC PRI. The 4th Rheindahlen Brownies would like to thank all those who supported this event.



£1,100 FOR THE HELEN HOUSE CHILDREN'S HOSPICE

Lt Col (Ret'd) John Woolmore, secretary of the Intelligence Corps Association, who deals with charitable ventures for the Int Corps, was pleased to be present when Lois Penketh-King presented Lt Col Andrew Perrey, CO 1 MI Bn, with a framed montage of the "Rendez vous Club's" money raising achievements.

The club made up of wives and female employees from the Battalion had raised £1,100 for the Helen House Hospice for terminally ill children in Oxford where Lois's niece, who was 5 yrs old on the day of the presentation, is a frequent resident. The money was raised at various events such as the Bruggen 10, potluck suppers, wine tasting evenings and from The Guild of St Helena who had made a significant fiscal donation. The framed montage included the presentation cheque, photos of the club members taking part in the various money raising events and in the middle a letter from Helen House thanking them for their generous donation.

Lois who has now retired as president of the club was keen to express her gratitude. "I would like to thank everyone who has supported the charity in my time as president and hope that the Rendevous Club can continue its charitable work long after I have gone".

If anyone is interested in giving a donation or would like further information about the Helen House Children's Hospice they can contact them at the following address: Helen house Children's Hospice, 37 Leopold Street, Oxford, OX4 1QT.

Joanna Dunlop



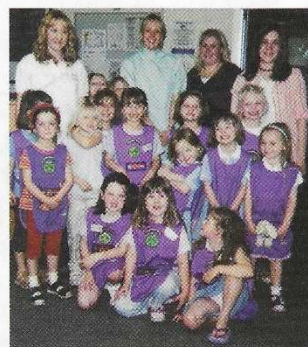
Lt Col Andrew Perrey, Lt Col (Ret'd) John Woolmore and Lois Penketh-King.

DENTAL DO'S & DON'TS

2nd Rheindahlen Rainbows have been brushing up on their dental health!

Recently, they paid a visit to the Rheindahlen Dental Centre where they received a tour of the surgery from dental hygienist, Lisa Light and were given advice on tooth-friendly foods from dental nurse, Clare Norton. During their visit, the Rainbows enjoyed "riding" in the dentist's chair and were given the chance to test out some of the equipment that might seem daunting to children (and adults!) when faced with routine check ups.

They also tested their knowledge of which foods were tooth-kind and learned the importance of brushing regularly and properly.



A special Rainbow thank-you to Lisa and Clare rounded off the visit and the Rainbows left with stickers and balloons to remind them that going to the dentist doesn't have to leave you feeling down in the mouth!



MILITARY SALES

PUT THE



BACK INTO YOUR LIFE



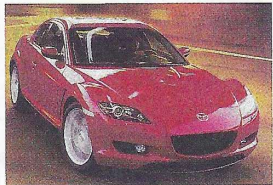
MAZDA 3 now available

**THERE ARE ONLY
SIX GOOD THINGS
ABOUT THE NEW
MAZDA RANGE**



MAZDA 6 forces favourite

**LOOKS
PERFORMANCE
HANDLING
PLEASURE
SAFETY
AND
VALUE**



RX 8 read the press

**FULL MAZDA RANGE AVAILABLE
WE OFFER FINANCE AND PART EXCHANGE**

**MAZDA (U.K.) APPROVED
BRITISH MILITARY SALES AGENT
CAR LINE e. K.**

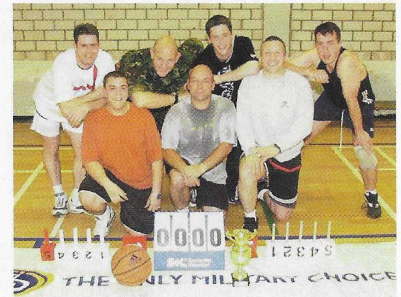
ROERMONDER STR 18
41372 NIEDERKRUCHTEN ELMPT
TEL 02163 984795 FAX 02163 984704
E. MAIL car_line@t-online.de

JHQ - ROERMOND MOTORWAY
TURN OFF AT TRAFFIC LIGHTS ELMPT
FIRST BUILDING LEFT CAR LINE.

Sports

COS SPORTS COMPETITION

Teams Compete against each other in the COS inter branch sports competition, Basketball Competition. Held at No1 Gym JHQ Rheindahlen. The event provided novel experience (particularly for those addicted to the treadmill) of running and ball control. The match was set to ensure that all standards of competitor can participate (with a little willpower).



Winning team G3



NATOCARS

**Right choice
Right price
Right there!**

18yrs+

1 years FREE Insurance* on 206!
* Subject to qualification criteria.

Drive away a BRAND NEW Renault Grand Scenic for only £250 deposit
when you part exchange a Ford Galaxy Ghia 1.9 TDi (130bhp) 03 or 53 reg with no more than 12,000 miles!

Talk to Garry Jones at our JHQ Office, BP Station, 2 Oakham Way, JHQ, Rheindahlen, 41179 Monchengladbach
Tel: 02161 660280

or Natocars' office in the Travel Office building, Javelin Barracks
**Tel: 02163 884944
G.J. Mobile: 0172 5133540**

UK HQ Wylds Road • Bridgwater • Somerset • TA6 4BH
Tel: 01278 455555 we'll call you back • Fax: 01278 450396 • www.natocars.co.uk
E-mail: sales@natocars.co.uk (Please supply postal address)

RRFRB

BORUSSIA

BYE BYE BOEKELBERG



Borussia beat **1860 Munich** in the last game of the season, and in fact, the last game ever at the Boekelberg Stadium. A 34,500 sell out crowd were in an emotional mood as every section of the ground said their goodbyes in their own special way. 1860 took the lead from a penalty in the 21st minute, but Sverkos equalized for Gladbach two minutes later. Igor "football god" Demo put Borussia two-one up in the 35th minute and VFL led 2-1 at half-time. It was Arie Van Lent's farewell game and he scored the third goal for the home side to seal the win and affect a fitting finale to his time at Boekelberg. Gaede was sent off six minutes from time but it could not change the result.

The fans stayed for an hour after the final whistle as they knew the next time they would see their heroes would be at the new Nordpark Stadium, opposite Ayrshire Barracks.

New Signings

Borussia have signed Milan Fukal from Hamburg on a free transfer and Darius Kampa from 1. FC Nuernberg also free. Oliver Neuville has been signed from Bayer Leverkusen and has been given the number 27 shirt at his own request.

Tournament

Borussia will open the new stadium on the **30th July** with a blitz tournament against **A.S. Monaco and Bayern Munich**. The teams will play each other for a 45 minute spell in succession this will be followed by a group called "Pur" who will perform live for the fans wishing to stay after the games.

Ticket information from Chris Dawson at Culpeck Insurance on 02161 55311 or from the Borussia website at Borussia.DE and see my English page.

For the final time this season I leave, as ever, marching on together.
Chris Dawson

ARE WE GETTING IT RIGHT?

DO WE MEET YOUR NEEDS?

THIS MONTHLY MAGAZINE IS PUBLISHED FOR YOU ALL
YOU DO HAVE A VOICE!
PLEASE USE IT.

CONTACT THE EDITOR ON JHQ MIL 3284 OR
THE OFFICER I/C - SSO ELMPT - ON ELMPT MIL 3634.

PLEASE NOTE

OUR NEXT MAGAZINE IS
A JOINT AUGUST/SEPTEMBER ONE.

THIS WILL BE PRINTED ON OUR PRINTERS RETURN
FROM HOLIDAY AND SHOULD REACH YOUR QUARTER
BEFORE THE END OF AUGUST.

NEED HELP WITH AN ARTICLE OR PHOTOGRAPH?

DO YOU HAVE AN EVENT COMING UP?

IF SO, CAN WE HELP YOU
REACH AS WIDE AN AUDIENCE AS POSSIBLE?

CONTACT THE EDITOR ON JHQ MIL 3284/2106
OR THE RMC PUBLIC RELATIONS OFFICE.
ON JHQ MIL 4789/4795.

TAE KWON DO AT JHQ

Morris Matthew's interest in Tae Kwon do did not begin until he was 30 when he took up the sport merely as keep fit exercise sessions, 7 nights per week!! However, in 1977, after numerous requests from friends & colleagues, he opened a class at the former Queens School - now Windsor School.

Morris has lived and worked in the JHQ area since 1972 and thoroughly enjoys passing on his knowledge and expertise to all ages and nationalities who work/live here. He enjoys helping people - as witnessed not only by parents and pupils, (past & present) at his Club but also in the job he does within the RSU Families Office - the Families Documentation Clerk.

This pleasant and helpful character, now 60 years old and still fighting - fit, takes great pleasure in the pride and achievement of his Club's Members.

The Tae kwon do Club meets at Windsor School Gymnasium 4 times a week:-
Tues, Thurs & Fridays 6-8pm
Sunday 2-4pm

You can contact Morris on JHQ 2708 for further details.
His Club is open to ALL.

Small ads

To be included, small ads must reach the Bulletin Office with payment by the 10th of the preceding month.
€5 for maximum of 20 words.
€10 for up to 30 words.

ARE YOU LOOKING FOR A JOB WITH FLEXIBLE HOURS & good money and time for yourself?

Then join our team of Independent Beauty Consultants. No experience necessary, full on-going training. For Info call Sharon: 02163/31564 mobile: 0170/3219601.

COSTA BLANCA, TORREVIEJA
Spacious house to rent. Sleeps 6, swimming pool, easy access to beaches and 3 golf courses. Tel: Uschi on MG 556139 (pm).

DEBBIE DOES NAILS

Qualified Nail Technician available for nail extensions, sculpturing and manicures. Ring Debbie 02163 898284.
*Located in Elmpt.

FIBRE GLASS NAILS

Natural, strong, beautiful! Flexible appointments with professional Nail Technician & Beauty Therapist Sharon call: 02163/31564 mobile: 0170/3219601. Coming soon Airbrush for nails!

FOR RENT

Furnished holiday house 5 meters from the sea at a beautiful bay in Izmir, Turkey. Crystal clear water, sandy beach. Newly decorated house with garden available all year, can sleep 4-6 people. Ideal for families with children. Tel: 0049 (2161) 955667 or 0090 (232) 7378119 for more information.

HOLISTIC HEALTH AND BEAUTY

Qualified in Chiropody, Reflexology, Massage and all Body and Beauty Care. Situated within Figaro Hair Salon. Tel: Uschi on 02161 559568 or 556139.

MIKES WINDOW CLEANING SERVICE

Registered, reliable and friendly team regularly clean MQ windows on request. For further info call Mike on MG551073.

PICTURE FRAMING

An on site picture framing service available now from the RMC Shop. Large selection of frames, mountcards, prints and mirrors. We also offer a frame matching service. Tel 02161 557608.

REFLEXOLOGY

A relaxing complementary therapy, that works holistically on the whole body using pressure to areas of the feet. Excellent for stress relief and many other ailments. For an appointment Ring Linda Topott on 8207478. A member of the British School of Reflexology and RN. Ref no. 1413. 25 euros per session.

REPAIR MAN

For your washing machine, tumble drier or dishwasher. Does your TV/radio/video need repairing or do you need a satellite dish fitted or repaired? Look no further. Call Sam to solve your problems. Telephone 02161 582458.

RMC SHOP

3 Band Walk JHQ 02161 557608 Opening Times Tues Fri 10 16 For all your gift ideas why not come in & have a browse. Friendly welcome guaranteed.

SLIMMING WORLD CLASSES

Monday - St Andrews Church Hall 6.00pm - Tel Laura Harvey-Smith MG 558616.
Tuesday - Sports and Social Club (behind Buschoff NAAFI) 5pm or 7pm - Tel Rachel Twine MG 582194.

TRANSFORMATIONS

Make over service for your quarter. Curtains, soft furnishings made to order by qualified Interior Designer. Tel: Sheila on 02161 557201.

SSAFA

RHEINDAHLEN FORCES HELP COMMITTEE

The SSAFA FH Rheindahlen Service Committee recently welcomed Louise Mariner, their new chairperson replacing Sally Inshaw (who left Rheindahlen in January) and Jill Wildish, who has done a sterling job as acting chair since then.

SSAFA FORCES Help

The committee meets to discuss applications for funding or other matters of concern for the local community. Funds may be used for grants to single Service personnel and families in need, to provide services and equipment for use in the community and to support local children with special needs.

For further information please contact:

The Volunteers Projects Office
HQ SSAFA FH Western Europe
BFPO 140
Tel: 02161 4723392 / e-mail: bfgvpo@bfgnet.de

Ad index

Index of Advertisers

Please tell our advertisers that you saw their advert in the Rheindahlen and Elmpt Bulletin.

EATING OUT

ARRC Cafe	16
China Garten	19
China Town	32
Dalmatiner	19
Happy Garden	32
Hong Kong	25
India Palace	26
McMullers Irish Pub	25
Pizzeria Italia	32
Tuschenbroich	19

FINANCE & INSURANCE

Culpeck Insurance Brokers	12
G. Bull Insurance	35
OGirke Travel & Insurance	10

FURNITURE

Alice Ann Antiques	30
Den Elzen	5
Erwil Meubelen	14
Flemish Oak Furniture	9
Sijben	4
Star House Furnishings	9

GOODS & SERVICES

Aladdins Cave	25
ARRC PRI Shop	16

Beautician - Mary Kay	12
Cattery	34
Complexions Beauty	5
Deans Tattoo	34
Dutch Army Shop	30
Eyebiente Optik	7
Farmshop Busen	12
Hair by Collors	14
Health You Win	44
Intratuin - Roermond	45
LB Computers	26
Naafi Marketing	3
Outlet Centre	29
Optik "Alte Post"	20
RSU Cobbler	7
Sunline Studio	26
TKS & Communication Service	Back

HOLIDAY & TRAVEL

O'Girke	10
---------	----

MOTORING

Auto Vennen (Ford)	40
Colt Car Company-Mitsubishi	1A
Fahrzeugtechnik Vest	40
Hamm Car Repair & Ser.	38
JHQ Cars	38
Mazda	42
Naafi Tax Free Car Sales	36
NATO Cars	42
Reifen Rex	38
Shell Garage	40
Voila (Repairs)	40
Volvo	34

LOSE WEIGHT FOREVER

With a safe and effective

- Herbal Diet • No calorie counting
- Personal Consultation Weekly
- Money Back Guarantee

Call Now 0693 - 65065015

(Local call rate)

Your local independent Herbal Life distributor

OR VISIT OUR WEBSITE

www.weightnetlink.com

RH/460



Your garden as the nicest room in the house.

Your garden, balcony or patio is an extension of your house in the spring and summer. Everyone feels at home here in their own way. For some it is a splendid playroom for football, hide-and-seek or building sandcastles, while for others it becomes a dining-room complete with bistro set, barbecue and candlelight. Intratuin has inspiring ideas all season long for the nicest room in the house. You'll find them in our folder, on the Internet (www.intratuin.nl) and of course, in our branches.

 **intratuin**
HET GROENE WARENHUIS

Intratuin Roermond,
St. Wirosingel 180, 0475-329296.
Monday - Wednesday 9.30am - 6pm
Thursday and Friday 9.30am - 9pm
Saturday 9am - 5pm
We are open every Sunday from 7 March
till 6 June from 11 am until 5pm.

TKSSnap!



English Telecommunication Service

This innovative service provides one easy to read English bill for any combination of the following services:

T-Net • Aktivplus • T-ISDN • T-DSL • T-Online

With TKSSnap! you can start a new service or change from your existing connection so that you benefit from our English language Hotline and monthly itemised bills in English.

**Now at Telecom Warehouse JHQ
opening soon at Javelin Barracks!**

**Telecom Warehouse
Marlborough Road 26
41179 Mönchengladbach**

**For more information, call:
02161 477688**

**Conveniently located
we are open:
Tues.-Fri.: 10:00 - 16:00
Sat. & Mon.: 10:00 - 14:00**

TKS

Telepost Kabel-Service Kaiserslautern
GmbH & Co. KG

in association with **Telecom Warehouse**