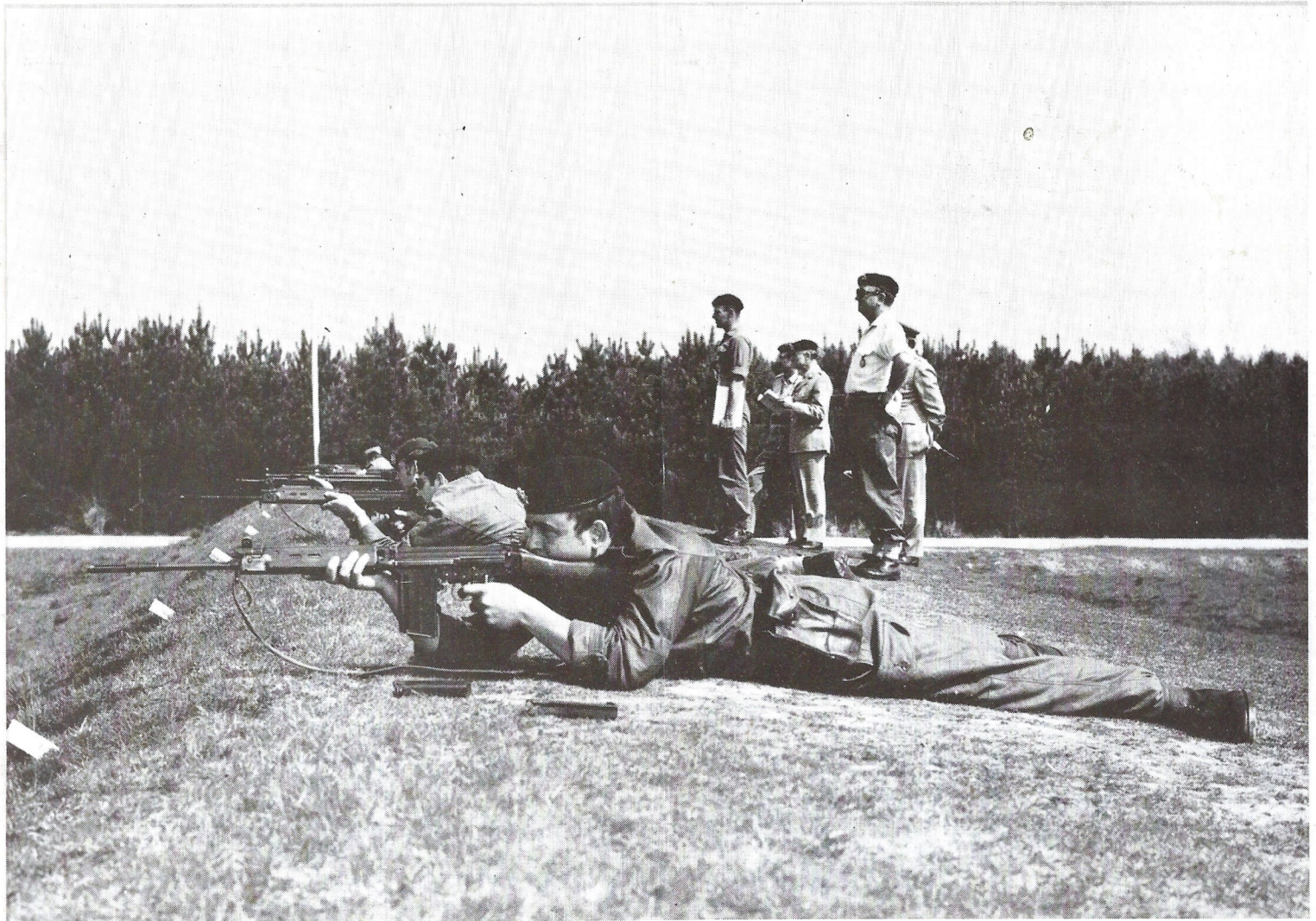


# The Rheindahlen Bulletin



# The 113 mph 5 Seater Sports Coupé

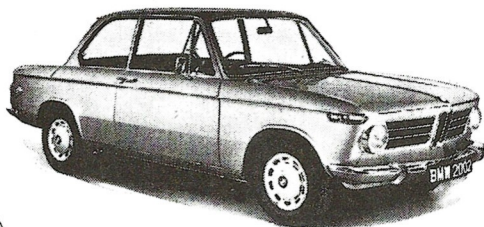


## move over... GOOD NEWS TRAVELS FAST

**GREAT NEWS** for every British serviceman who is . . . will be . . . or has been serving in H.M. Forces overseas. Despite all the recent taxes and revaluation you can own a BMW of your choice and save from £759 to over £2,100 on U.K. prices. In some cases nearly half price! Every one of these superb 'family saloons with sports car performance' is built to im-

pressive safety standards with reserves of speed and acceleration to ensure complete mastery of any traffic situation; each is the ideal choice for both town and motorway driving. Compare BMW performance with competitive marques and you'll find that BMW is the leader—every time.

*Other models include: 108mph BMW 2000 · 121mph BMW 2500  
125 mph BMW 2800 · 130mph BMW 2800 c.s.*



# 2002

To: BMW Concessionaires GB Limited  
BFG Information Office, 4930 Detmold-Brokhäusen, Oberngarten 2  
Tel.: Detmold 81997\*

Please send me details of the BMW range, my special privileges, and the name of my BMW Great Britain representative for British Forces in Germany.  
See Rod Jones at the NAAFI Saturdays 10.30-1.30

Name

Address

Telephone

# Editorial

Issue No. 13 — perhaps not a propitious time for a change of Editor, but reluctantly we have to say farewell to Mrs. Pam Lloyd who now leaves the Bulletin after a year's hard work. We turn the spotlight on Pam on Page 10.

The end of May saw the highly successful Inter Church Senate Summer Fete, which raised the grand sum of DM 13,000, twice as much as last year. This money will be given to Christian Aid, Hephata Heim (a home for handicapped men and boys in Mönchengladbach), and to our own handicapped children's school here in Rheindahlen. Great credit goes to the organisers and many helpers for this tremendous effort, and also thanks to all those who went along to the Fete in spite of very threatening weather. Was it the combined prayers of all three Padres which kept the rain away?



General Sir Peter Hunt buying tickets at the Raffle Stall from Mrs. Alan Needham. Photograph by Army P.R.



Photo by Cpl. Dunn

On the occasion of the Queen's Birthday Parade, prayers were to no avail — the ceremony of Beating the Retreat and Fly Past had to be cancelled due to heavy rain. However, the Commanders-in-Chief were able to receive Allied Officers and their wives as guests in the United Services Officers' Club. The picture (above) shows Major General von Hinkeldey, Air Marshal Sir Harold and Lady Martin, and General Sir Peter Hunt together at the Reception.

Our congratulations go to those at Rheindahlen honoured in the Queen's Birthday List. These included Wg. Cdr. P. Steib (OBE), Fg. Off. H. Hingley (MBE), W.O.1 T. Jones (MBE), W.O.1 R. Walsh (MBE), W.O.1 K. Rodgers (MBE), and Cpl. M. Noble (B.E.M.).

EDITOR: Mrs. S. Ball (Ext 4639)  
ASSISTANT EDITORS: Mrs. S. Furlong (Ext 3297),  
Mrs. R. Grafton, Mrs. L. Mears (MG 59937)  
BUSINESS MANAGER: Major A. N. Paul (Ext 2985) \*

SERVICE ADVISORS TO THE EDITORS: Major M. Hopkin  
(Ext 3279), Sqn Ldr D. Headland (Ext 4748)  
ADVERTISING MANAGER: Herr Thiel (Ext 2934)  
PRINTER: Fritz Ecken, 4056 Schwalmtal 1

**ALL CONTRIBUTIONS TO THE MAGAZINE MUST BE RECEIVED BY THE 10TH JULY FOR THE AUGUST EDITION.** They should be sent to the Editor, Rheindahlen Bulletin, RAF Rheindahlen, BFPO 40.

The material in this magazine is copyright reserved and should not be reproduced without permission.

Front Cover: Competitors at the annual NORTHAG Skill-at-Arms meeting on the range at RAF Bruggen. Photograph by Army PR.



## WHITSUN EXPEDITION

In past years the Club has gone to Kiel to dive in the sea at Whitsun. This year it was decided to try Holland because it was not only closer, but also you could dive in tidal waters which were more exciting and few members had dived in currents before. The expedition consisted of thirteen British Army members, five civilians, one German Army and one Dutch member. The diving site was at Strijenham some 10 km West of Bergen OpZoom and the divers lived on a camp site there with pretty primitive facilities, but fortunately the weather from Saturday to Monday made it all bearable.

The Club was lucky in having an assault boat and recce boat, both with motors. This made getting to the diving site an easy matter and gave good overhead safety cover to the divers. Diving could only take place safely around high or low water due to the tidal current which could run at about 2 or 3 knots which is too fast for a diver to swim in comfortably.

The water temperature was a reasonable 15° C and the maximum depth reached was 70 feet but the visibility there was terrible and it was difficult even to read your depth gauge and compass. A reasonable dive with good visibility could be obtained at 45 feet and there you could see small crabs, starfish and some nonstinging jelly fish. Drifting gently over the bottom with the current was quite an experience. Fish were scarce, but a weever was spotted and the training officer swears he "leaned" on a sizeable ray, whilst pushing himself along the seabed in low visibility. Who knows? Maybe it was his diving partner. One thing that was definitely established was that the depths shown on the admiralty chart for the area are rather suspect due to the sandy bottom moving with the tides.

The photograph shows Mr Ronnie Chapman and Cpl Ivor Clarke just after completing a dive.

# A HOLIDAY THOUGHT

We are now in the midst of the holiday season. Every day you see people setting off for some distant destination with cars piled with luggage, or the laden caravan lumbering gently behind. "Have a lovely holiday" we say and think to ourselves "It won't be long before we go too".

We look forward to our holidays and the added leisure that they bring. Leisure is a very important part of our lives, and in more ways than we might imagine. The famous Dean Inge once said "The soul is dyed the colour of its leisure hours"!

The prophet Isaiah gives us a vivid picture that might help us. It is the description of an idol worshipper. He cuts down a tree, and uses it first of all to satisfy his natural needs — "He burneth part thereof in the fire, with part thereof he roasteth flesh, he roasteth roast and is satisfied, Yea, he warmeth himself and saith 'Aha, I am warm, I have seen the fire, and the residue thereof he maketh a God'.

Here we have a picture of the place religion holds in many lives. We parcel out our time, so much for work, so much for pleasure, so much for reading, so much for sport and then the residue (if any) we give to God.

Now in one sense we must parcel out our time, but we want to remember that the whole of our leisure, as well as our work belongs to God, and he ought to have a part in it.

I remember reading about a party of African Chiefs who some years ago were being shown round a great new dam. They were quite uninterested until they spotted a pipe coming out of the ground with a dripping tap at the end. Eagerly they crowded round in excitement. Uninterested in the great engineering marvel that was to bring life to the desert, but deeply interested in a waterpipe with a tap on it. We may smile, but many people are thrilled by the waterpipes of life, its trivialities, but blind and deaf to great realities.

A wrong use of leisure may easily destroy our sense of proportion. Perhaps there was some truth in what Dean Inge said, and we should have a look from time to time to see what colour our soul is turning!

The only safeguard is the thought that God is Lord of all our life, our work and our play.

# Good Gardening in July

"Heavy is the green of the fields, heavy the trees  
With foliage hang, drowsy the hum of the bees  
In the thund'rous air: the crowded scents lie low  
Thro' tangle of weed the river runneth slow." (Robert S Bridges)

So it is in July, when growth has reached its peak, that something must be done to combat rose pests and diseases; among the most common of these are: —

- (a) Leaf Scorch causing yellow spots on leaves
- (b) Black spot on leaves causing withering and loss of buds
- (c) Leaf-rolling sawfly causing curled up leaves
- (d) Rose leaf minor causing winding track marks

**Remedy**  
Spray with liver of sulphur, loz in 3 gallons of water.  
Dust with sulphur. Burn all diseased leaves and branches.  
Burn all attacked leaves. Spray with E 605 insecticide.

Rose suckers must be removed. Cut them off close to the root; the sucker is generally a lighter green and usually has seven or more leaves to a spray. From now onwards cuttings can be taken from most varieties of roses. One method is to select a side shoot of this season's growth and to pull it off sharply with a heel of the old wood attached. The cutting should be about 10 inches long after the tip has been cut off to the first leaf joint, and the lower leaves removed. The cutting should be planted of nearly half its length in a trench containing rotted compost, sand and leaf mould, located in a protected part of the garden; it must be watered well and the soil pressed down firmly: transplant in the spring.

During this month: improve lawns and trim hedges; mulch plants with lawn clippings; take cuttings; mulch vegetables; pinch out side shoots on tomato plants; cut back parsley running to seed; cut off and burn branches on fruit trees which have been attacked by silver leaf. Mulching is the process of spreading a layer of compost, manure, lawn mowings, leaves, peat etc on the surface of the soil; its purpose is to provide nutriment and to keep roots moist. DO NOT use grass clippings which have been exposed to weed killer; also the grass should be free of seed. Grass mulches must be occasionally stirred as they get very hot. Mulches of animal manures must not make actual contact with the plants.

When cutting flowers for indoor decoration use a sharp knife and make one upward slanting clean cut; select flowers which are not fully open and place upright in a bucket of water. The stems should be as long as possible and the part in water stripped of leaves. The best water for the flower vase is rain water, but if you use tap water, try putting a pinch of bicarbonate of soda, or salt or an aspirin in the water.

During the next two months it is usual to collect fuel for your winter fires; wood is dry and can be stored in the cellar of your home, ready for use in winter. Dry logs are available now from the Garrison Nursery (tel. Monchengladbach Civil 58124) at the following summer rates: — NOT DELIVERED 1 cwt = DM 5, DELIVERED 5 cwt = DM 20, 10 cwt = DM 38, 20 cwt = DM 70.

The holiday season is here: before going away do not forget to put your indoor plants in a cool part of the house and place in a bowl or tray which is partly filled with water.

Until August, Goodbye and Good Gardening.

## The new Hillman Hunters are here!

**CHRYSLER**  
**MILITARY SALES CORPORATION (ROOTES)**  
**UP TO 17½ % DISCOUNT**

Tony Smith — Your local agent — between JHQ and Hardt

Chassis Numbers immediately — 10 days delivery from stock

Office MG civil (02161) 58118

Hardterwaldstraße 200

Home MG civil (02161) 59523

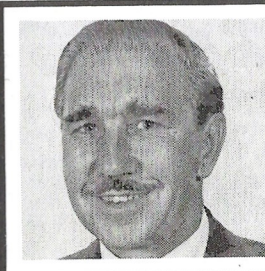
Facilities for disposal of your used car.

**HILLMAN**

**HUMBER**

**SUNBEAM**

# NAAFI NOTE BOOK



BY  
**DOUGLAS McBIRNIE**

## **STILL ON THE UP AND UP!**

The traditional "Richtfest" or topping-out ceremony held at the JHQ Shopping centre on Thursday 3 June was attended by senior members of both the military and civilian elements of the headquarters complex.

Fifty guests gazed upwards as the gaily-coloured garland was oisted to the highest point of the new building and the traditional speech and toasts to the work of the artisans was given by Herr Paul Iwan of Hastenrath construction company. Other speeches were given at ground level by: Regerierungs Direktor Rawe of the Finanz Bauamt, Finanz Präsident Dreier of Düsseldorf and the architect Herr Valand. All of them spoke of the splendid co-operation which had gone into keeping the project on schedule and expressed confidence that the building would be completed punctually.

This means that the vast new foodhall will (should) be in operation by September. We shall then convert the existing building into a modern gifts and durables section which will be completed in time for Christmas. The clothing shop will move in soon afterwards, thus completing a "one-stop" shopping complex.

## **ADVENTURE AT THE USOC**

Saturday 3 July should see some strange contortions as a 20-piece steel band induces ball-room dancers to become – would you believe – limbo dancers. Seagrams (the distillery company) are setting a tropical scene for their Caribbean night on Saturday 3 July. The evening will start with a free cocktail hour at 2000 hours which should help you warm-up for the limbo and the DM 12.00 ticket includes a beach-comber dinner. Cooked on drift wood, maybe. There will be lots of spot prizes and Seagrams hope that many participants will dress "Caribbean style". This promises to be a wonderful evening for club members and their guests.

I have to finish off this reference to the USOC with a plea for part-time waiters and bar-tenders (both sexes). Previous experience will be an advantage but not essential. Telephone the club manager on Monchengladbach (civil) 59361 or visit the club for further details.

## **A DAY OUT FOR 21 ORPHANS**

A party of six to 10 year olds from the Kinderdorf, Waldniel, were invited to the Naafi staff hostel in Monchengladbach for a day out on Sunday 13 June. The children were accompanied by their guardian Herr Georg Gietman who was delighted with the way in which the eighteen members of the hostel had arranged side-shows, a film show and a slap-up meal for the children. The mess members who all work at the Naafi shops in the JHQ Rheindahlen

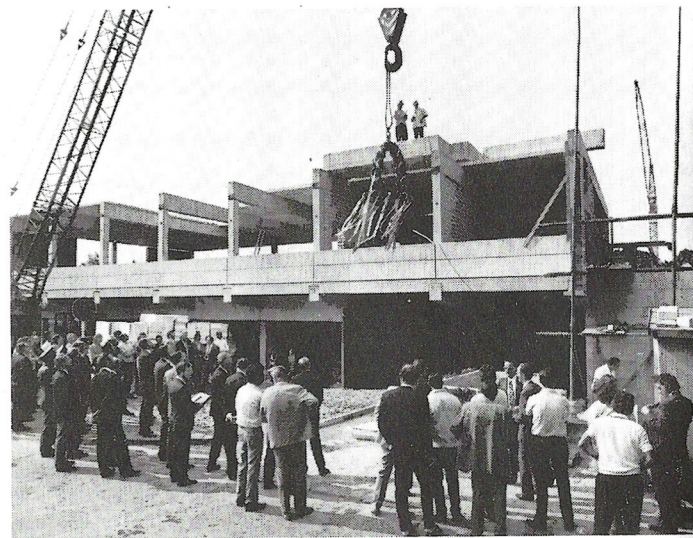
area, paid for the party from a series of discotheques and a bar-becue.

## **ST DAVID'S COME TO NAAFI!**

Twenty-six children from St David's Junior School moved classrooms on Tuesday 15 June when they attended a lecture in the Naafi foodhall. Foodhall manager Mr Andy Richardson told the group of children – predominantly 8 year olds – about the manufacturing processes involved in producing soap, tea and coffee but the star attraction was an adding machine. "Why do we need to do sums when all we need to do is press buttons?" asked the children of their teacher Miss Maree Edwards. Sensibly, she declined to comment!

## **COMING YOUR WAY!**

Erika Burns of Hoover will be visiting the gifts and durables department at JHQ Rheindahlen on three occasions during July: 1 to 3, 6 to 10 and 19 to 24.



The garland is hoisted to the top of the new Naafi shopping complex at JHQ Rheindahlen.



## Naafi is unique in offering a finance service with all these advantages

### NAAFI WILL FINANCE

- purchase of a new car from a dealer — see coupon
- purchase of most makes of new British touring caravans — see coupon
- purchase of a used car up to three years old from another member of HM Forces (or a civilian entitled to deal with Naafi) — see coupon
- comprehensive insurance premium on the car for the first year.

### GO ANYWHERE

- first class insurance cover at a reasonable cost and prompt cover if you are posted
- insurance cover where applicable against three-quarters of your liability to purchase tax and import duty in the event of your premature repatriation.
- Naafi will also finance reasonable freight charges and transit insurance if you are posted and the car has to be transferred before you have finished paying the instalments.

### HIRE PURCHASE

- free personal insurance — no further instalments are payable in the event of your death
- low HP charges — without strings
- Deposit Saving Plan to help you build up a deposit for a new car — see coupon.

THESE ARE JUST A FEW OF THE REASONS  
WHY OVER 25,000 SERVICEMEN HAVE USED  
NAAFI FINANCE FACILITIES.

Ask for leaflets in your nearest Naafi shop. Or complete this coupon and post (without obligation) to: Credit Manager, HQ NAAFI ES, BFPO 40.

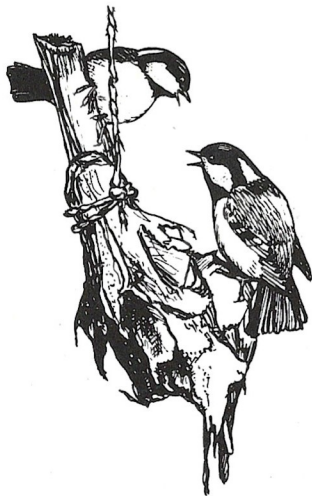
Please send me details of:

- New car hire purchase ( )  
 Caravan hire purchase ( )  
 Used car hire purchase ( ) tick appropriate square  
 Deposit Saving Plan ( )

name .....

unit .....

BFPO .....



## Bird Spotter

### Coal Tit (*Parus ater*)

An attractive species of gentle colouring and quiet appeal, it appears from time to time at the garden bird table, especially in hard weather. Resident in woodland, with preference for conifers or highland oaks. Description: 4 inches. Sexes alike. A very small tit with relatively big head, dull black but with white cheeks and broad white stripe up nape to crown. Call-notes a rather thin but musical "tswee".

---

## EATING OUT

A few miles from here, at the head of the Hariksee (off the B 221, above Niederkrüchten), is the cosy hotel-restaurant Mühlrather-Mühle, one of many such mills in the district. It is beside the lake, and adjacent to a boat park. There we ate a mouth watering pepper steak, rubbed with garlic, salt and pepper, and served with a rich, thick sauce in which both brandy and cream were noticeable. Sauté potatoes were crisply fried and interlaced with onion and bacon. An accompanying fresh salad was crisp and imaginative. As a sweet we chose their Dame Blanche vanilla ice-cream, over which was draped a hot chocolate sauce and whipped cream. Service was good, by a waiter with more than enough English to get us by. Replete, we left. The bill, for four, including two thirsty husbands, came to DM 72.50. We had value for money. Visiting note: they open on Mondays, when many other restaurants are closed.



### Tourist menu

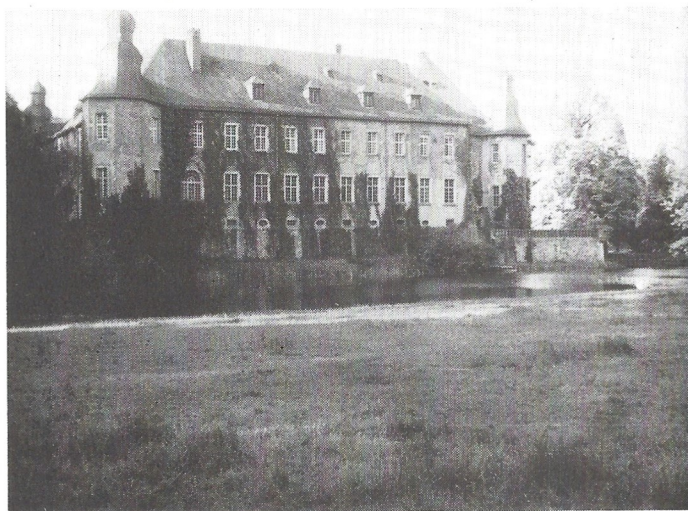
Many Dutch restaurants offer a tourist menu, consisting of three courses, for f 7.50 all-in.

These restaurants may be identified by the emblem shown here.

(Editor's note: we would welcome similar, short articles from our readers)

## TWO CASTLES AND A HILL

Schloss Rheydt, as the name suggests, lies just outside the town of Rheydt and is sign-posted from within the town. The oldest remaining parts of this moated castle are late Gothic, dating from between 1494 and 1533. During the late sixteenth century, the castle was rebuilt in the Netherlands Renaissance style, and has remained so to the present day. The casements connecting the outer bastions are normally accessible. Within the castle there is a museum and exhibition of local Roman finds.



Schloss Dyck from the Park

Schloss Dyck is some 12 km from Rheydt and is approached via Giesenkirchen along Route 377 in the direction of Neuss, turning right as one approaches Liedberg, then passing through the village of Steinforth. The castle park with its avenue of horse chestnut trees is unmistakable. The moated castle is of great beauty and is set in a park of botanical specimens. It would be wrong to give a description of all there is to see, as it is the unexpected vista which crowns the pleasure of visiting a country house. The present building was erected between 1656 and 1663 and is still the residence of the Fürsten zu Salm - Reifferscheid - Dyck. The castle is open to the public and is noted for its rare Chinese wallpaper (only recently rediscovered and restored), Gobelins, and the extraordinarily large collection of weapons, some of which were in fact made by the 'Dycker' gunsmith.

On the way to or from Dyck, the visitor is well advised to stop at Liedberg itself, the only 'hill' for miles around, with the remains of Liedberg castle and its massive fifteenth century central tower crowned by a late Baroque cupola. In the village, the castle chapel and a round tower dating from Roman times are of interest.

JEC



## *On the Ruins of Valkenburg*

Stones, rough hewn, made old and venerable  
By times caresses, silent, inscrutable awaiting decay.  
Man comes still to read your glorious fable;  
Though your ancient usefulness has passed away.

On battlement and craggy tower where Knight  
And Warrior stately trod. Fallen now, neglected,  
And creeper clad, elders climb and children fight.  
All oblivious how their sires you once protected.

And though upon your noble face, refraining,  
E'en wind and rain descending, softly touched.  
Vainglorious man, his little fame proclaiming  
Must cut his initials rudely in your crust.

But once, there was an age which knew your grandeur.  
When heroic men born of yester-time  
Sought through strength to give you lasting splendour;  
Wedding stone to stone with mortar, sand and lime.

For their safe keeping your great strength imparting;  
Immortality was their gift to you to keep.  
This ancient union lingering with their parting.  
It seems within these stones their spirits sleep.

Hush now! I see the crowds at last departing.  
Like you in meditation here I stand,  
A stirring deep within my breast is starting;  
Oh stones! Your spirits answer, and I understand.  
SUSSEX

FOOTNOTE: Valkenburg is situated a few miles east of Maastricht. It has Roman caves, other grottos (one with an aquarium), a zoo, go-karting fairs, souvenir shops and restaurants, and an open-air theatre.

# STOP!

## LOOKING for a gift or souvenir?

Come and look round our newly extended gift department –  
and view our large selection of Hummel and Dresden China.

Gifts and souvenirs for all tastes. We specialize in Black  
Forest Cuckoo Clocks.

Also a very wide selection in all Leather Goods.

Special offers in toys still available.

# WILHELM SCHMITZ

## THE CORNER SHOP

Phone 59610

# FIAT

# AUSTIN

# MORRIS



From the specialists for the Military

## Rankins of Rheydt

407 Rheydt • 111 Limitenstr. • Tel. Rheydt 4 80 76

■ large stocks ■ best HP

Telephone for demonstration and information

We will call and see you



Photograph by Army PR

## ADIEU — MON COLONEL!

For more than eight years the Liaison Officer from the C in C French Forces in Germany at HQ BAOR, Colonel Lieb and his wife (Georges and Fernande to their many friends) have been very much an integral part of Rheindahlen Society.

Arriving in June, 1963 they have served with four British Commanders in Chief and have seen many of their friends come and go. Colonel Lieb has been the representative of five French Commanders-in-Chief including the well-remembered General Massu. He was promoted in his tour to the rank of Colonel in 1968, and elevated to the grade of Officer of the Legion of Honour the following year.

In July Colonel Lieb retires from the Service and will take a retired officer post in Baden-Baden. He and his wife will long be remembered in Rheindahlen not only for their personal charm but for the very genuine efforts they made in sustaining comfortable Anglo-French relations and promoting contacts between the two Armies. When Colonel Lieb came, the now well-frequented French Clubs at Baden-Baden, Trier and elsewhere were hardly known. Now there are few who have not, through his courtesies, come to know them well. As for Madame Lieb, no one could have participated more fully in the wifely circles of Bridge, Thriftshop and similar activities.

Rheindahlen retains the image of a fine French officer and his Lady and wishes them health and happiness in their new setting.

## BFES ATHLETICS AND SWIMMING CHAMPIONSHIPS

The Tenth Annual BFES Individual Athletics and Swimming Championships will be held on Monday 12th and Tuesday 13th July. The Athletics Finals will be held at the Garrison Sports Ground commencing at 1400 hrs and the Swimming Championships at the Garrison Swimming Pool commencing at 0930 hrs on Tuesday 13th. Spectators will be most welcome to these events which will involve the best Senior Boy and Girl Athletes and Swimmers from the Secondary Schools in Germany.

Each year, families living in the area of Rheindahlen are asked to help by offering hospitality to competitors. This involves collecting a pupil from Queen's Upper School on Sunday 11th July at tea-time: looking after the child until Monday morning when he/she would join official transport to school, receiving the child

# RHEINDAHLEN

on Monday evening and looking after him/her until Tuesday morning. Should any family feel able to help in this considerable undertaking they are requested to ring Hostert Military 20 between the hours of 0900 and 1600 hrs on school days. The accommodating and hosting of the competitors will depend entirely on the good will of local families and we would greatly value your support in this matter.

## AIR COMMODORE CUTS THE TAPE

Air Commodore J. Gingell, MBE, Air Officer in charge of Administration at RAFG, officially opened the new premises of the Headquarters Provost and Security Services at Rheindahlen. On his left is Wing Commander P. Green, Officer Commanding HQ P and S.S. Senior members of the German Police and Customs from Monchengladbach, Erkelenz and Limburg were among guests at the opening ceremony.



Photograph by RAFG PR

## GURKHA WELFARE APPEAL

Items in aid of the Gurkha Welfare Appeal will be sold in the Durable/Gifts Shop, Rheindahlen, between 5th and 10th July 1971, with the kind cooperation of NAAFI.

Decorative and useful goods such as printed linen tea towels, crested glass ash trays, ball point pens, miniature kukris, long-playing records of the Pipes and Drums of the Brigade at present on tour in the UK, and coloured historical prints of Gurkhas will be on sale.

# ROUNDABOUT

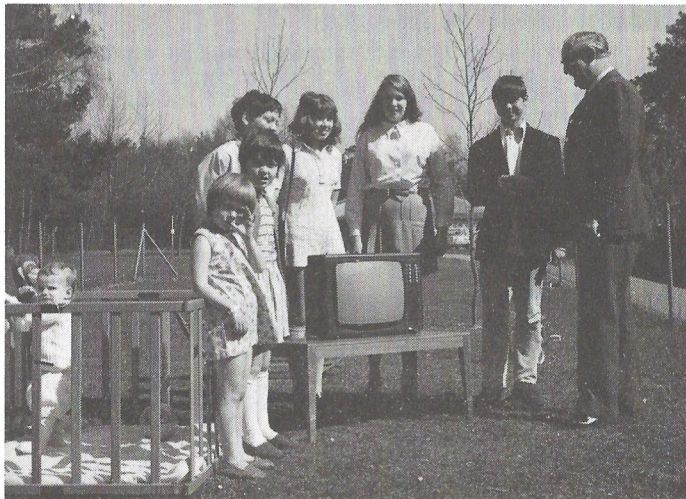
Every item sold will help to increase the Appeal funds which will be used to alleviate hardship suffered by Gurkha ex Servicemen in Nepal through such common annual disasters as landslides, floods and fire, and to extend the present very limited medical cover in the hills.

All donations, however small, will also be gratefully received. Details can be obtained at the Appeal counter in the Durable/Gifts shop during the week 5th-10th July.

---

## T.V. SET FOR CHILDREN'S WARD

A fund-raising project by local youth clubs, started and finished in the Easter holidays, resulted in a television set being presented to the Children's Ward of Wegberg Hospital. The set was handed over to Group Captain Ferguson by representatives of the Youth Clubs.



Photograph by RAFG PR

---

## LONG SERVICE MEDAL FOR RAF FOOTBALLER

One of Royal Air Force Germany's keenest soccer supporters, Sgt Peter Johnson, received the Long Service and Good Conduct Medal from Group Captain J A Henshaw, Command Accountant, in a recent ceremony at RAF Rheindahlen. His wife Jean is seen looking on. Sgt Johnson is a keen sportsman, his particular interests being soccer and bridge. He was an active football referee until 1969, when he took up coaching. Under his coaching both Gatow and Rheindahlen won the RAF Germany Football Cup for the first time in their histories.



Photograph by RAFG PR

---

## RAF PLAQUE FOR LOCAL EMPLOYEE

After 23 years service with the RAF Communications Centre Germany, Herr Alfred Boettcher retired recently two weeks after his 65th birthday. He is seen here receiving a plaque bearing the unit's official badge from Sqn Ldr L. A. Nash, Officer Commanding the Communications Centre. Brought up in the part of Germany that is now Poland, Herr Boettcher worked in the textile industry until World War II. He was captured by the Russians while serving with the German Army on the Eastern Front and was held prisoner in Russia until the end of the war.





## Personality of the Month

The small bundle of energy featured as our personality of the month is the ex-editor of the "Bulletin", Pam Lloyd. She started off the magazine in its present form a year ago and has recently left our

office to enjoy a well earned rest for the remainder of her stay in Germany.

Rest is never quite the right word to describe her activities; besides editing the Bulletin she is Lady Captain of the Golf Club, she plays tennis, squash and badminton, has become a ten-pin bowling fan and is now taking up bridge.

She was brought up in a Service family and met her husband in 1956 in Cyprus. They have two sons, Michael (11) and David (9). Since then they have travelled to Singapore, Aden, Thailand, Hong Kong and round Europe; they came to Germany in January 1968 when her husband, Group Captain Tim Lloyd, took command of RAF Bruggen. It was there that Pam started the station magazine on similar lines to our own Bulletin and she was pressed into service at Rheindahlen on arriving here last year.

She admits to enjoying entertaining, other people's parties, dressmaking and occasionally cooking; she describes herself as an enthusiastic tourist on the rare occasions that her husband can be persuaded to embark on such ventures. Her main interest, however, has always been sport. She took up golf in desperation as her then fiance took absolutely no notice as she rushed up and down the tennis courts of Nicosia. After a tour in Singapore where she had the opportunity for regular practice she now has a handicap of 11 and is the lady club champion. She is determined to do better, as her sister has already played for England.

It is always surprising that this diminutive figure can hit a ball so hard; she is 5 ft 2 inches tall and confesses to 110 lbs. Her husband is quite content — "She was so light when I married her that we had to peg her down if the wind rose above 15 kts" was his recollection.

To see her working on the magazine was always worthwhile. Paper everywhere, coffee cups, ashtrays, paper clips and photographs were mixed up in a confused mass over the tables, chairs and floor. The telephone rang constantly, doors open and shut as people came and went and there was a general impression of complete confusion. In the end the magazine always reached the printer on time — but by then she was busy on something else. We will all miss her on the magazine, but thank you Pam for all your help. Our best wishes go with you when you return to England with your family at the end of the year.

# Calling all Teenagers

## Summer Holiday Programme

The summer holidays are fast approaching. Have you decided how to spend your time? Some of the following activities might appeal to you.

**Friday July 23rd** — Swimming Gala at the Blue Pool commencing 2 p.m.

**24th July — 2nd August 1971** — Summer Outdoor Activity Camp. Cost 60 DM, 30 vacancies. If you like canoeing, sailing, climbing and expeditions come along. Expert instruction available.

**9th-13th August 1971** — Tennis tournament to be held in Rheindahlen. Three age groups — 11-13; 14-16; 17-18 yrs. Events: Singles, Doubles, Mixed Doubles. Entry fee per person per event: 50 pfgs. Entry forms available from Youth Service Officer, Schools Education Centres and Youth Clubs.

**19th August 1971** — Six-a-side cricket competition to be held at Rhine Centre Dusseldorf starting 2 p.m. Juniors 11-14 yrs Senior 15-18 yrs. Entrance fee — 1 DM per team.

**September 1st 1971** — "Riverboat Shuffle" Dancing to Pop Music on the Stadt Dusseldorf Rhein Steamer from 7 pm — 11 pm. Cost of ticket, inclusive of transport, 7 DM.

Further information on summer activities available from Youth Clubs, Education Centres, Schools or from the Youth Service Officer, c/o SHQ, RAF Rheindahlen, B.F.P.O. 40. Ext. 4009 or Dusseldorf Military 374.

## Youth Activities

In the August issue we propose to publish a Diary of Events of interest to teenagers. For this to serve its purpose of acquainting the young with "what's on", it needs to be comprehensive. Therefore, anyone concerned with any activity in which our holiday floating population could participate, to a greater or lesser degree, is invited to send details to Garrison HQ (RA 2561).

## Swimming Pool Times for July

**SATURDAY** 3rd, 17th & 31st.

1000—1300 Soldiers/Airmen & Families

1330—1700 Officers & Families

**SUNDAY** 4th & 18th

1000—1300 Officers & Families

1330—1700 Soldiers/Airmen & Families

**SATURDAY** 10th & 24th

1000—1300 Officers & Families

1330—1700 Soldiers/Airmen & Families

**SUNDAY** 11th & 25th

1000—1300 Soldiers/Airmen & Families

1330—1700 Officers & Families

**N.B.** On the above dates the Pool is open from 1700—2000 hrs to All Ranks and Families.

Weekdays from 1000—2000 hrs — All Ranks & Families.

Pool closed for Swimming Galas on the following dates until 1700 hrs. July: 1st, 2nd and 13th.

No admittance to Pool after 1945 hrs.

# OPTIK-HILGER

**Ophthalmic and dispensing**

**Contact lens specialist**

**English spoken**

In Stock:

Latest fashioned style of frames  
from well known firms in Europe

Zeiss — Marwitz + Hauser — Metzler  
Christian Dior — Viennale  
Essel, Paris — Serge Kirchofer, Vienna  
Boutique Modells

**Latest In Lenses**

**ZEISS Umbramatic**

which change colour between 10-70 % automatically

**Eyetest free of charge**

After testing you may wait for your glasses

5144 Wegberg · Beecker Straße 26 · Tel. 21 59  
405 Mönchengladbach · Neußer Straße 260 · Tel. 1 69 82

## **BMC LANCIA INSURANCE & CAR FINANCE**

**up to 20 % NATO Discount given to Forces and  
Sponsored Civilians on all makes represented by us.**

Call on us to-day for any information you require.  
Our showrooms are in the JHQ Shopping Centre,  
opposite the BP Petrol Station, Tel. 021 61 / 5 93 26  
within easy reach of anyone stationed or visiting the  
JHQ area.

Not only do you buy your car from us but you avail  
yourself at the same time of our excellent After Sales  
Service.

HP can be arranged for periods of up to 36 months.  
We can also supply you with immediate insurance  
cover for your new or used car.

## **KREMER Automobile**

JHQ SHOPPING CENTRE  
TEL.: MÖNCHEGLADBACH 5 93 26

## *French Restaurant St With*

Moenchengladbach, Alter Markt 6, Tel. MG civ. 16424

Come to visit us and try our  
French Specialities and Wines

---

We offer a first class service  
and superb cuisine in historic surroundings.

---

OPEN ALL DAY THROUGHOUT THE WEEK  
SATURDAYS FROM 18 HRS ONLY

## PHILATELIC NEWS

**United Kingdom Issues** Four Decimal Regional Packs (Wales, Scotland, Northern Ireland and the Isle of Man) are to be on sale on 7th July. The following Literary Anniversaries stamps are to be on sale on 28th July:

150th Anniversary of the death of John Keats — 3p; Bicentenary of the death of Thomas Gray — 5p; Bicentenary of the birth of Sir Walter Scott — 7<sup>1</sup>/<sub>2</sub>p.

**National Army/Royal Air Force Museum Covers** A limited supply of the following covers are still available from the Philatelic Bureau NWE, 8 CPCCD RE, BFPO 34:

### Army

Datestamp	Number	Cover/Group	Title
16. 5. 71	1231	No 7 Gp 2	Uniform — King's Royal Rifle Corps
16. 5. 71	1232	No 7 Gp 3	Famous Generals — The Viscount Beresford
16. 5. 71	1233	No 8 Gp 4	The Battle of Albuhera

Price, each: DM 2.20

### RAF

Serial No	Issue	Title	Station	Price
19	5. 4. 71	First RAF Rocket Mail-aircraft Hawker Fury	RAF Cosford	DM 2.65
27	15. 5. 71	30th anniversary of first UK jet flight, aircraft Gloucester Whittle	RAF Kenley	DM 2.20
16	31. 5. 71	Air Force Day — Henlow, aircraft Supermarine Southampton	RAF Henlow	DM 2.20

## Angling in Holland

Angling is a popular sport in Holland, enjoyed by high and low, young and old. There are countless choice spots where you can fish for pike, perch, bream, white bream, roach, eel or pike-perch. Almost everywhere rowing boats may be hired by anglers for a modest fee. If you want to fish with an ordinary rod, you can get a fishing permit costing about f 3.50 a year from any town hall or local police station. You can then fish throughout Holland with one rod in public waters (waters which are also sailed on). For two rods or one special rod you must obtain the "small fishing licence", obtainable for approx. £8.50 from any town hall or police station. This licence is likewise valid throughout the country, but you must in addition have the permission of the owner of the fishing. For other than public waters you must also have a fishing permit or licence plus permission. The fishing season is open from 1 June to 16 March for the IJsselmeer and inland waters; 1 June to 1 April for rivers and 1 July to 1 March for fishing with a special rod. Sea-fishing from the beach or breakwaters, or from a boat, is also attractive, and entirely free from restrictions. From many places on the Wadden Sea on the North Sea Coast you can go out to fish in a cutter (cost about f 11.—). You can also hire a cutter with skipper. The best way to do this is together with a number of other anglers (about f 150.— a day).

Don't say  
farewell  
cruel world



Make your life worthwhile and buy a reliable

SECOND HAND CAR from



MÜNCHENGLADBACH

BURGGRAFENSTR. 55

PHONE (02161) 31166

All cars are BFG Road tested and garage maintained.

Reasonable Hire Purchase Terms provided.

Free demonstration or free transport to and from garage.

Also large selection of cars for hire.

For further details please phone our representative Herr Lehmann on MG 3 11 66

SAY IT WITH FLOWERS  
from your Florist

## BLUMEN — MENKE

Wedding Bouquets — Floral Sprays  
Wreaths — Fresh Flowers daily

Delivery within the camp and to Wegberg Hospital  
Tel. M.GI. 5 96 15

AGENT FOR INTERFLORA.

## *Figaro* Albert Penatzer

Ladies and Gents Hair Dressing Salons also Manicures

JHQ Shopping Centre — Tel. M.GI. 5 95 68

S.West Extension, Cambridge Drive — Tel. 5 87 38

900-1800 hrs daily except Monday



**AUSTIN · MORRIS**  
**MG · TRIUMPH**

SERVICE · REPAIRS · SPARE PARTS  
AND SPECIAL ACCESSORIES

## J. MASSIER

**405 Mönchengladbach**

Künkelstraße 125 - (B 57) - Tel. 221 16

# You can dispose of German marks or English pounds at any time

Wherever you may be stationed in Germany, there is DM available for you. Before returning to the UK all your saved money will be exchanged for English currency at once. How does it work? All you need is a current-account or a savings-account with our bank. We'll gladly look after your savings, advise you on investments, arrange money transfers and give you assistance on all financial matters. And above all: at the Commerzbank you can always depend on VIP treatment.



## COMMERZBANK

Mönchengladbach - Königsstraße 2

Branches: Hauptbahnhof, Humboldtstraße 6

Rheindahlen 1, Plektrudisstr. 15 - Rheindahlen 2, Headquarter  
RAF Wildenrath B.F.P.O. 42 - RAF Hospital Wegberg B.F.P.O. 40

## 新華酒家

### Chinese Restaurant

for good Chinese food, atmosphere and price

**Lichthof 4 Mönchengladbach**

Open daily 12.00 — 15.00 and 17.00 — 23.30

All  
Prices  
tax free

## PSI SHOP

### SHQ RAF RHEINDAHLEN

Open  
to  
entitled personnel only

TV, RADIO, Car Radio, Stereo and Audio Equipment, Swiss and Japanese Watches, Cameras and Projectors. Camping Goods, Garden Furniture Etc. A few "Special Offer" Tents still available. Large range of good quality inexpensive sleeping bags.

## Collecting Decorations and Medals

I was asked to produce an illustration for this month's article but for a multitude of good reasons it was not possible to obtain one, so I crave your indulgence on this point — it was this reason that decided me to feature the General Service Medal 1962 in this issue, since its appearance will be reasonably well known to most readers.

Aesthetically speaking, this medal is probably the most uninspiring piece yet to be awarded by Her Majesty's Government. It may not be out of place at this juncture to name the various parts which go to make up the completed piece. Starting from the top we have the ribbon. In this case it is purple with narrow green edges. There appears to be no good reason why these colours were chosen; they are, of course, the reverse of the ribbon attached to the General Service Medal 1918. Joining the ribbon to the actual medal is the suspender or clasp. On this suspender there will always be found a bar, sometimes also called a clasp. Five bars have so far been awarded to this GSM — Borneo, Radfan, South Arabia, Malay Peninsular and South Vietnam. Of these five, that for South Vietnam is rare (I have not yet seen one offered on the British Market), as is also that for Radfan, the current selling price of which is around £25. Next we come to the medal, whose different parts are: the obverse, containing the Sovereign's head and legend; the reverse, in this case containing the words "For Campaign Service", surmounted by the St Edward crown, the whole encircled by a wreath; the rim, which bears details of the recipient. This particular medal is carried upon a swivel suspender, that is, it may be displayed with either the obverse or reverse upwards. It is usual to wear medals with the Sovereign's head uppermost.

An interesting point about this medal is that it is also awarded to personnel of the Royal Navy as well as the Army and Royal Air Force, having superseded the very attractive Naval General Service Medal as well as the GSM 1918. One may suspect that the Senior Service might not have been particularly overjoyed about this!

---

### 8th Rheindahlen Ranger Guide Service Unit

Are you aged between 14 and 20?

Do you like general outdoor and indoor activities, i.e. camping, hostelling, hiking, cycling, walking, and visits to the theatres? Did you know that there is a very active Ranger Guide Service Unit here at Rheindahlen? Well there is!

Why not come along one Wednesday evening at 7 o'clock to the Guide HQ (opposite the Garrison Nursery) and find out what it's all about for yourselves. Or if you want any information about us, why not contact SACW Stephenson on Extn 4514 during duty hours and 4327 after duty hours.

We'll be delighted to see you, we're quite a friendly crowd too!

# MOBEL MUNSTER LAGER



## WHOLESALE FURNITURE

---

### 407 Rheydt - Mittelstr. 27

Tel. 0 21 66 / 4 80 66 / 67

**COME TO CMC - BELGIAN NAAFI  
WHERE WE PRESENT:**

An International Furniture Exhibition  
by prominent producers

Free delivery and installation by experts

Service and advice by joiner and cabinet maker

Special Oriental carpet department with authenticity  
certificate for each carpet

All prices are at unbeatable value  
and value added tax is deducted

More information can be obtained from:  
**Mr Hupez, Manager Belgian Naafi Central,  
Rheydt, Akazienstraße 5. Tel. 30140**



## RHEINDAHLEN GUN CLUB - CLAY PIGEON SHOOTING

The sport of Clay Pigeon Shooting is gathering impetus in all countries, especially since it has been recognised as an Olympic Sport. The question has often been posed "What is a Clay Pigeon?" It is a disc made of sandstone and pitch, saucer shaped and is 4 1/2 inches in diameter. It is black in colour but ones with white or yellow rings are often used so that they can be more easily seen against a dark background.

Towards the end of the 18th Century with the introduction of the flint lock and the percussion lock, competitions were held using live pigeons as targets. These were originally released by hand and later from traps, which were wooden boxes with a release mechanism and on the call of "Pull" opened and allowed the pigeon to escape. The competitors had to bring the pigeon down within a prescribed circle.

Although this sport is still practised in certain European countries and in America, the more humane shooting at "clays" predominates. The term "trap" is still used to indicate the spring mechanism which throws the clays. This is a hangover from the old live pigeon days.

There are three basic sports in Clay Pigeon shooting: "Skeet", "Olympic Trench" and "Down the Line". Two are described here.

"Skeet" comes from the old Scandinavian word meaning "to shoot": it provides excellent practice in gun handling, reaction timing and "lead" allowances on crossing targets. Here, "clays"

are thrown on fixed lines from two trap houses known as the High and Low House. These are 40 yards apart and subtended from the crossing point of the clays is a semi-circle of seven stands 9 yards apart, Stand 1 being directly under the High House, Stand 7 under the Low House and Stand 8 halfway between the chord of the centre line. The shooter calls "Pull" for the release of the clay from the High House and "Mark" for the clay from the Low House. A round consists of 25 clays.

"Down the Line" consists of one trap set below ground level but capable of varying the angle of throw for each clay. The angle varies through 80° and elevation of between 10° and 60°.

Clay Pigeon shooting is a most demanding sport. Conditions vary with climate, wind and surroundings and competitors must be alert and able to concentrate on each shot. They must automatically take up a good stance, have perfect balance and rhythm. Good gun mounting is of paramount importance and in fact when the butt meets the shoulder one can instinctively tell whether or not the target has been hit.

Rheindahlen Gun Club has an excellent "Skeet Range" and a "Down the Line Range" at Leloh (on the site of the old Receiver Station). PRI has guns suitable for beginners or those who do not possess their own guns. These can be borrowed free and instruction in all forms of shooting is available.

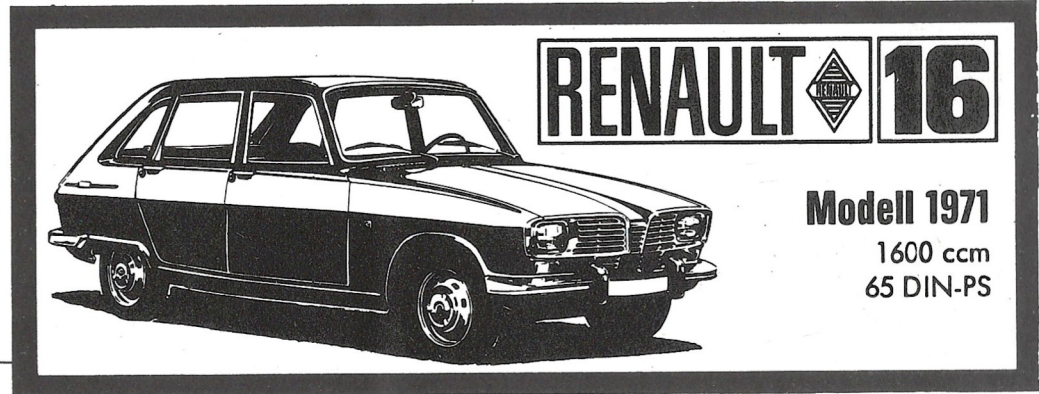
Shooting takes place every Wednesday evening and Saturday afternoons. If you are interested, contact Lt Colonel (Retd) S S Ogilvie, on RA 2425 or 2477 for further details. All ranks and ladies are cordially welcome.

**Autohaus  
BONGARTZ**

**Waldniel**

**Ungerather Straße 60**

**Telefon Amern 4135**



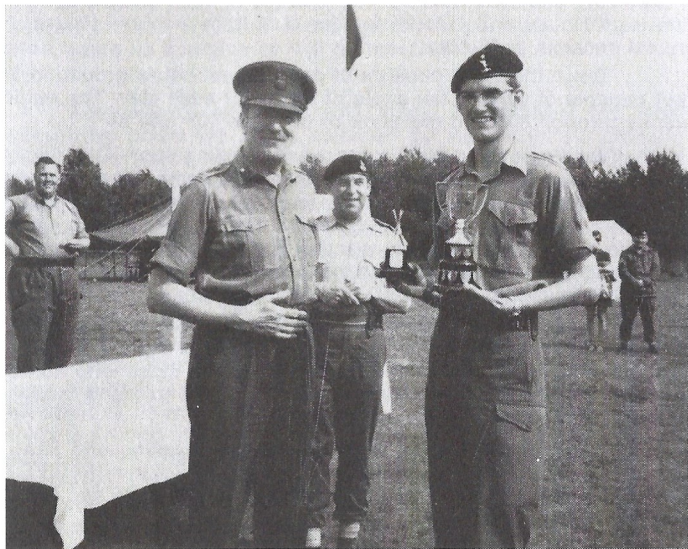
**Customer Service  
and Sales  
Repairs**

Most people buy the Renault 16, because it is so modern - then they find out it's so safe!

We recommend that you have a testdrive.

# SPORTS PAGE

## RHEINDAHLEN GARRISON RIFLE MEETING



The Garrison Commander Col FHG Eggleton OBE presenting the trophy to the Champion Rifle Shot, Cpl Hunt HSC NORTHAG.

After a very wet practice day on 24 May 71, the rain gave way to mist at Arsbeck Range for the first day of the Garrison Skill at Arms Meeting; and the final day, on 27th May 1971 was blessed with brilliant sunshine. This encouraged some keenly contested shooting; the highlight being the tie for first place in the major event "The Rifle Championships" between Cpl Hunt R Signals and RSM Williams The Coldstream Guards, both members of the H SC NORTHAG team. In the exciting "shoot off", by repeating his first score of 129 points, Cpl Hunt became the Champion Rifle Shot.

There was another tie for first place in the Inter Branch Match between the "Q" Branch and HSC NORTHAG teams. This was decided by the result of the section match which HSC NORTHAG won by points.

One pleasing aspect of the meeting was the participation, for the first time, of members of the WRAC. It is intended that this side of the shooting will develop quickly, resulting in a far larger entry in future years.

At the end of the day the Garrison Commander, Col F. H. G. Eggleton, OBE, presented prizes to the following winners:

### Match No 1 Rifle

#### Class A (Oftrs)

Winner Capt Ogilvie (111)  
Runner up Maj Cosgrove (110)

#### Class B (WOs and Sgts)

Winner RSM Williams (129)  
Runner up WO1 Dannell (111)

#### Class C (Cpls and below)

Winner Cpl Hunt (129)  
Runner up Cpl Davis (114)

### Class D (ROs and UK based Civilians)

Winner Col (rtd) Peters (60)

Runner up Mr Steadman (53)

### WRAC CHAMPION (Combined SMG and Rifle Score)

Winner Pte Waldron (144)

### Match No 2 LMG Pairs

Winners Sgt Portlock - Cpl Rennie (260)

Runner up S/Sgt Penman - Sgt Thompson (244)

### Match No 3 SMG

Winner SCM Gibson (118)

Runner up Capt Barnard (114)

### Match No 4 Unit and Branch Section Match

Winning Unit C Coy - Runner up 1 ADU

Winning Branch HSC Northag Runner up Q Branch

### Falling Plate

Winner C Coy "A" Team

Runner up A Branch "A" Team

### Pool Bull Winners - 30 DM each

Dvr Hopkins - Sgt Portlock

Sgt Pennington - Sgt Stoppelenborg

Sgt Murray

### Champion Rifle Shot

Cpl Hunt (129)

## RHEINDAHLEN EVENING CRICKET

Once again the annual evening cricket competition between Branches/Departments of Joint Headquarters and its associated minor units and Schools here in Rheindahlen, is under way. This year twelve teams have entered the competition, which is sponsored by OIC Sports and Estates.

These are:

Ordnance Directorate HQ BAOR

Casuals CC

NORTHAG/TWOATF Tpt Coy

Department of the Environment

British Element HQ NORTHAG (incl A Coy)

Allsorts (Catering Services)

Queens School

Rhinos CC

68 Sqn RCT

Medical, Pay & Engr Services HQ BAOR

Int & Security Gp HQ BAOR

Kent School

Teams play each other once only and, whilst the main objective of the Competition's sponsors is to encourage a fairly light-hearted and friendly approach to the game with maximum participation by as many all ranks as possible, especially those who might not otherwise play, games are enthusiastically contested. For the ultimate Champions, there is a handsome Shield which has been competed for almost continually since 1955 and which was first presented for a games meeting in 1946. The Shield is currently held by the British Element HQ NORTHAG, last season's winners.

If your Branch or unit has a team in the Competition, why not go along and support it? Games can be seen most nights - Mondays to Thursday - on the main Army Sports Ground and the Snyders Road Ground from 1800 hours onwards. Better still, why not join one of the teams and play a game or two?

## SMALL ADVERTS

HOME DRESSMAKERS - Dress materials to suit all seasons and occasions can be ordered from a large range of UK materials at competitive prices. All required sewing notions and patterns can be ordered with your choice of material. Contact: Mrs. Jean Coman, 12 Stornoway Walk, S. W. Extension.

## RHEINDAHLEN HORTICULTURAL SHOW

A Horticultural Show will take place in the Marlborough Club on Sat 24th July. Classes will include: Flowers, Vegetables, Baking/Preserves, Handicrafts, and Floral Art. The standards are not to be compared with shows held back home, so don't be discouraged, and do have a go! There are a number of Trophies and cash prizes to be won. Entry forms are available from WO1 MacFarlane, ORD DTE, HQ BAOR, BFPO 40. Tel. RA 2130.

## JOBS AND VACANCIES FOR DEPENDANTS

A varied range of jobs is available for dependants of Army, RAF and civilian families stationed in and around Rheindahlen. You should register with The British Employment Office, 6 PCLU RPC No 1 Bedford Walk, Rheindahlen, as soon as possible. If we cannot fix you up immediately, we will place you on our waiting list and, with the constant comings and goings, your turn will soon come. Vacancies exist now for many types of professional, clerical, domestic and unskilled work. Rates of pay are good and your earnings are TAX FREE.

## RHEINDAHLEN BALLET SCHOOL

Classes are held at the following times; Tuesdays: Baby Class (2½-5 yrs) 3 pm-3.45 pm (Youth Club, Beresford Rd, Opposite RAF Medical Centre)

Beginners 4.15-5.15  
(St. Georges School)

Wednesdays:

Grade 1 4.30-5.30  
Grade 2 5.30-6.30  
(St. Patricks School)

Thursdays:

Beginners 4.30-5.30  
Primary 5.30-6.30  
(St. Patricks School)

For further details please contact Miss Marilyn Halliburton, 8 Elgin Walk, Ext. 4788.

## SUMMER FETE

The Wickrath Scouts, Guides, Cubs and Brownie Guides are holding their Summer Fete in aid of the Scout and Guide Movement at Wickrath on Saturday 24th July. The fete will be officially opened by Brig. W.S. Mullin, OBE, MA, at 1400 hrs, and admission will be free. There will be a dance in the evening, at 2000 hrs, tickets 2 DM each.

# STOP PRESS

## FLOWER CLUB SUMMER SHOW - CHANGE OF DATE AND VENUE

Arrangements for the Rheindahlen Flower Club Summer Show have had to be changed, and this will now take place on Wednesday July 7th at the Marlborough Club, and not on July 1st in the USOC, as previously announced in the June issue.

## RAF WIVES CLUB

The next meeting will be held at the Sports and Social Club on Monday 5th July. Come and watch Frau Boehmke from the Marlborough Club Salon give a wig demonstration. Monday July 12th - you will hear a few tips on flower arranging and also a practical demonstration will be given by Mrs. Jean Trott. Buses will collect and return members at the usual times. The Wives Club will be closed for the whole of August.

## ARMY WIVES MEETING

The next meeting of the Army Wives Committee is to be held in the Church Centre at 1430 hrs on Tuesday 6 Jul 1971. Points for this meeting should be forwarded to WO I Sharp, HQ Rheindahlen Garrison by Tuesday 29 June 1971.

## ST. ANDREW'S SCHOOL

Would parents living in the area served by St. Andrew's Infant School, Rheindahlen, please register their children for entry next term i.e. commencing Tuesday, 7th September 1971. Children must have their 5th birthday on or before 31st December 1971. Registration can be made at the school or by telephoning Rhine Army 2344. If coming personally, please bring your child's/childrens' birth certificate.

## LAWN MOWER SERVICING

The Lawn Mower servicing will be suspended from 1st July 1971 and resumed on 2nd August 1971.

## COMMAND LENDING LIBRARY

During the summer holiday leave period from Monday 26th July until Saturday 4th September (inclusive) the hours of opening at the Command Lending Library will be as follows:

Monday	Closed a.m.	2-6.30 p.m.
Tuesday	10-12.30	2-6.30
Wednesday	10-12.30	2-5.00
Thursday	10-12.30	2-6.30
Friday	10-12.30	2-6.30
Saturday	10-1.00	Closed

The later opening hours until 8 p.m. on Monday, Tuesday, Thursday and Friday will recommence on Monday 6th September.

## 3rd RHEINDAHLEN GUIDES

The Guides of the 3rd Rheindahlen Company raised about 450 DM from their Fete on June 19th, and would like to thank everyone who helped make it such a success.

## RAF THRIFT SHOP

The Thrift Shop will be closed for the Summer holidays as follows: Last Taking-in day 15th July, Last Paying-out day 22nd July. The Shop will close on 22nd July and will re-open on 9th September First Taking - in day 9th September First Paying-out day 16th September THERE WILL BE A SPECIAL OPENING FOR TEENAGERS ON: Friday 30th July 9.30-11.30 a.m. Saturday 31st July 9.30-11.30 a.m.

## ARMY THRIFT SHOP

The Army Thrift Shop will commence its Summer Sale on Tuesday 13th July, lasting for two weeks. The last taking-in day will be 1st July and the shop will close on 23rd July until September.

## ST. GEORGE'S SCHOOL

Will parents with children who will be five before 1st January 1971, living in the South-West Extension of Rheindahlen, or at Wegberg, register their children as soon as possible, please. Tel. RA 2840

## SSAFA NAPPIES

Did you know that towelling nappies are available at 18 DM per dozen from SSAFA? Anyone interested please contact Mrs. M. George, 5 Winchester Way, Ext 4791.

## RETURN OF TEXTBOOKS

All textbooks on loan from 34 Army Education Centre should be returned for stocktaking purposes to command Lending Library at Cambridge House by Sat. 10th July 1971. Books required for private study will be re-issued.

# CINEMA PROGRAMMES

## GLOBE CINEMA - JULY

Performances at 18.00 and 20.30 hrs. unless otherwise stated.

1	WINNING - Paul Newman, Joanne Woodward	A
2, 3	FRAULEIN DOKTOR - Susy Kendall, Kenneth More	AA
4, 5	KING AND I - Yul Brynner, Deborah Kerr	U
6	BUTCH CASSIDY & THE SUNDANCE KID - Paul Newman	A
7	THE LOST MAN - Sidney Poitier, Joanna Shimkus	A
8	OTLEY - Tom Courtney, Romy Schneider	AA
9, 10	THE WALKING STICK - David Hemmings, Samantha Eggar	A
11, 12	RIO LOBO - John Wayne (Monday at 20.30 hrs only)	U
13, 14	MIDNIGHT COWBOY - Dustin Hoffman	X
15	ALFRED THE GREAT - David Hemmings, Michael York	A
16, 17	SAY HELLO TO YESTERDAY - Jean Simmons	AA
18, 19	RUN ON GOLD - Richard Crenna, Anne Heywood	A
20	SCREAM & SCREAM AGAIN - Vincent Price	X
21	A PROFESSIONAL GUN - Franco Nero	AA
22	"Z" - Yves Montand	A
23, 24	DIRTY DINGUS MAGEE - Frank Sinatra, George Kennedy	AA
25, 26	THE PRIVATE LIFE OF SHERLOCK HOLMES - Robert Stephens	A
27, 28	THE LAST GRENADE - Stanley Baker, Honor Blackman	A
29	HEAVEN WITH A GUN - Glenn Ford	X
30, 31	THEY CALL ME MISTER TIBBS - Sidney Poitier	AA

## MATINEE

3	AIR PATROL - Willard Parker (at 10.30 am)	U
3	SUPPORT YOUR LOCAL SHERIFF - James Garner (at 2.30 pm)	U
17	FERRY CROSS THE MERSEY - (at 10.30 am)	U
17	TALE OF TWO CITIES - Dirk Bogarde (at 2.30 pm)	U

## ASTRA CINEMA - JULY

Performances at 18.00 and 20.30 hrs. unless otherwise stated.

1	THE MAD ROOM - Shelley Winters	X
2, 3	BENEATH THE PLANET OF THE APES - Charlton Heston	AA
4, 5	SUNFLOWER - Sophia Loren	A
6, 7	THE WILD BUNCH - William Holden, Ernest Borgnine	A
8	KRAKATOA - EAST OF JAVA - Maximilian Schell	U
9, 10	MASTER OF THE ISLANDS - Charlton Heston	A
11, 12	BULLET FOR ROMMEL - Jack Palance	A
13, 14	HOW TO COMMIT MARRIAGE - Bob Hope, Jackie Gleason	A
15	WHERE IT'S AT - David Janssen, Robert Drivas	X
16, 17	THE BOATNIKS - Robert Morse, Stefanie Powers	U
18, 19	ALL THE BROTHERS WERE VALIANT - Robert Taylor	A
20	SPRING AND PORT WINE - James Mason, Susan George	A
21, 22	THE LION IN WINTER - Peter O'Toole, Katharine Hepburn	A
23, 24	TOO LATE THE HERO - Michael Caine, Cliff Robertson	X
25, 26	THE BUTTERCUP CHAIN - Hywell Bennett, Jane Asher	X
27, 28	ON HER MAJESTY'S SECRET SERVICE - George Lasenby	A
29	FINIAN'S RAINBOW - Fred Astaire, Petula Clark	U
30, 31	I START COUNTING - Jenny Agutter, Bryan Marshall	AA

## MATINEE

10	BEYOND THE SEVEN SEAS - Rod Cameron (at 10.30 am)	U
24	OKLAHOMA TERRITORY - Bill Williams (at 10.30 am)	U
24	THE ITALIAN JOB - Michael Caine (at 2.30 pm)	U
25	DOCTOR DOLITTLE - Rex Harrison (at 2.30 pm)	U

## POLICIES AND GREEN CARDS

FROM

## ELLEN CULPECK

CAMBRIDGE DRIVE (ADJOINING FIGARO'S)  
SOUTH WEST EXTENSION

OPENING HOURS: MONDAY TO FRIDAY 1000 - 1800 HRS  
SATURDAY 1000 - 1300 HRS

TEL. M.G. 59655

ELLEN CULPECK - FORCES INSURANCE BROKERS

CAR - CARAVAN - TRAILER - MOTOR CYCLE - MOPED  
BAGGAGE - HOLIDAY SICKNESS - TOURING - HOUSE-  
HOLD-HUNTING - LIABILITY INSURANCE

# RENAULT



# SAAB 99



# SIMCA

## Lawrence Allwright

405 Mönchengladbach, Alter Markt 21  
or phone anytime (02161) 36137

Representative - Jim Thompson has demonstration cars  
on show Saturday mornings opposite JHQ NAAFI